

# Elinx™ EIRP410-2SFP-T

## Unmanaged Industrial Ethernet Switch with 8 PoE, 2 Gigabit RJ-45/SFP Combo Ports

- ✓ Eight 10/100 BaseT 802.3af End Point PoE Ports
- ✓ Two RJ-45/SFP 100/1000 Combo Slots for Gigabit Ethernet
- ✓ UL, cUL CE/EN 60950
- ✓ DIN and Panel Mount Options
- ✓ Wide Operating Temperature (-40 to 75C)

The *EIRP410-2SFP-T* is a 10 Port unmanaged Industrial Gigabit Ethernet Switch. In addition to 8 PoE copper RJ-45 ports, it has 2 RJ-45/SFP Combo ports to accommodate Gigabit Ethernet.

**Small Form-factor Pluggable (SFP) Port:** The SFP Ports provide flexibility when planning a network. Modules are available in multiple fiber formats. If an SFP module is not inserted, the associated combo port can be used with standard RJ-45 copper.

**High-Speed Transmissions:** The switch includes a switch controller that automatically senses transmission speed (10/100/1000 Mbps). The RJ-45 interface also auto-detects MDI or MDI-X, eliminating the requirement for a crossover cable. Each port is buffered and supports store-and-forward protocol.

**Dual Power Input:** To reduce the risk of power failure, the switch has two 48 VDC power inputs. If the power fails, the switch will automatically use the secondary power input. Also, if the power goes out the corresponding P1 or P2 LED will go out and the Fault LED will light. The contacts for the alarm output will also open.

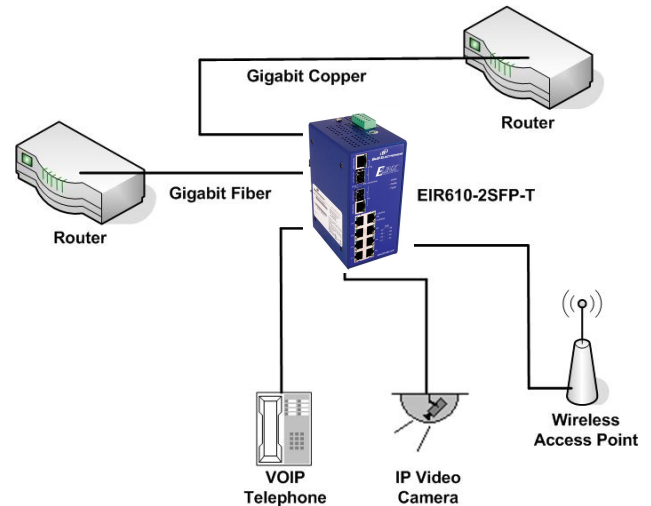
**Flexible Mounting:** IP30 metal enclosure - DIN or Panel mounted.

**Power Over Ethernet (PoE):** The eight 10/100 ports are classified as power sourcing equipment (PSE). These ports can be used to power IEEE 802.3af compliant powered devices (PD), eliminating the need for a separate power supply for each device. (15.4W per port)

**Wide Operating Temperature:** With an operating temperature of -40 to 75°C (-40 to 167°F), this switch is suitable for use in harsh industrial environments.

**Easy Troubleshooting:** There are two LED indicators for each port that display the link status and transmission speed. Three LED indicators for power (P1, P2 and Fault) show power status. FWD LEDs on each PoE port indicate when a powered device is connected. These indicators allow you to quickly diagnose and correct problems and ensure your network remains reliable.

B&B Electronics' Elinx™ Brand Ethernet Switches are your number one choice for reliable performance in harsh industrial environments.



### Ordering Information

Model Number	Description
EIRP410-2SFP-T	Industrial Gigabit Switch (8 PoE, 2 SFP) Power Over Ethernet Sourcing

Accessories	
SFP-100FX-M-2KM-T	SFP 100Base-FX, MM 2KM, LC
SFP-100FX-S-30KM-T	SFP 100Base-FX, SM 20KM, LC
SFP-1000SX-M-550M-T	SFP 1000Base-FX, MM 550M, LC
SFP-1000LX-S-10KM-T	SFP 1000Base-FX, SM 10 KM, LC
SFP-1000LX-S-20KM-T	SFP, 1000Base-FX, SM 20 KM, LC
SDR-240-48	48VDC, 240W, 5A, DIN Mount Power Supply

## Specifications

### IEEE Standards

IEEE 802.3	802.3. 10Base-T Ethernet
IEEE 802.3u	100Base-TX and 100Base-FX Fast Ethernet
IEEE 802.3ab	1000Base-T
IEEE 802.3z	Gigabit Fiber
IEEE 802.3x	Flow Control and Back Pressure
IEEE802.3af	Power over Ethernet

### Network Specifications

Architecture	Back-plane (Switching Fabric): 5.6Gbps Throughput (Full-dup): 8.3Mpps@64bytes
Transfer Rate	14,880 pps Ethernet Port 148,800 pps Fast Ethernet Port 1,488,000 pps Gigabit Fiber Ethernet
Buffer	1 MB
MAC Table	8K

Misc	Broadcast Storm Filtering CSMA/CD
------	--------------------------------------

### Interface

RJ-45 Ports	8 x 10/100BaseT, 2 x10/100/1000, Auto MDI/MDI-X
SFP	2 x Mini-GBIC SFP Combo Ports
LED	Per unit: Power (Green), Power 1 (Green), Power 2 (Green), Fault (Red), 8 port 10/100: Link/Activity (Green), Full duplex/Collision (Amber), Power Feeding (Green) Giga port: Link/Activity

### PoE

Ports	1 through 8
Standard	802.3af End Point Alternative A Power Source Equipment (PSE)
Capacity	15.4W per port
Pin Assignment	1 & 2 – VCC(+), 3 & 6 – VCC(-)

## Specifications

### Regulatory

<b>Safety EMC</b>	UL, cUL CE/EN60950-1
	FCC Class A
	CE EN61000-6-2
	CE EN61000-6-4
	CE EN61000-4-2 (ESD)
	CE EN61000-4-3 (RS)
	CE EN61000-4-4 (EFT)
	CE EN61000-4-5 (Surge)
	CE EN61000-4-6 (CS)
	CE EN61000-4-8 (Magnetic Field)
<b>Free Fall</b>	IEC60068-2-32
<b>Shock</b>	IEC60068-2-27
<b>Vibration</b>	IEC60068-2-6

### Power

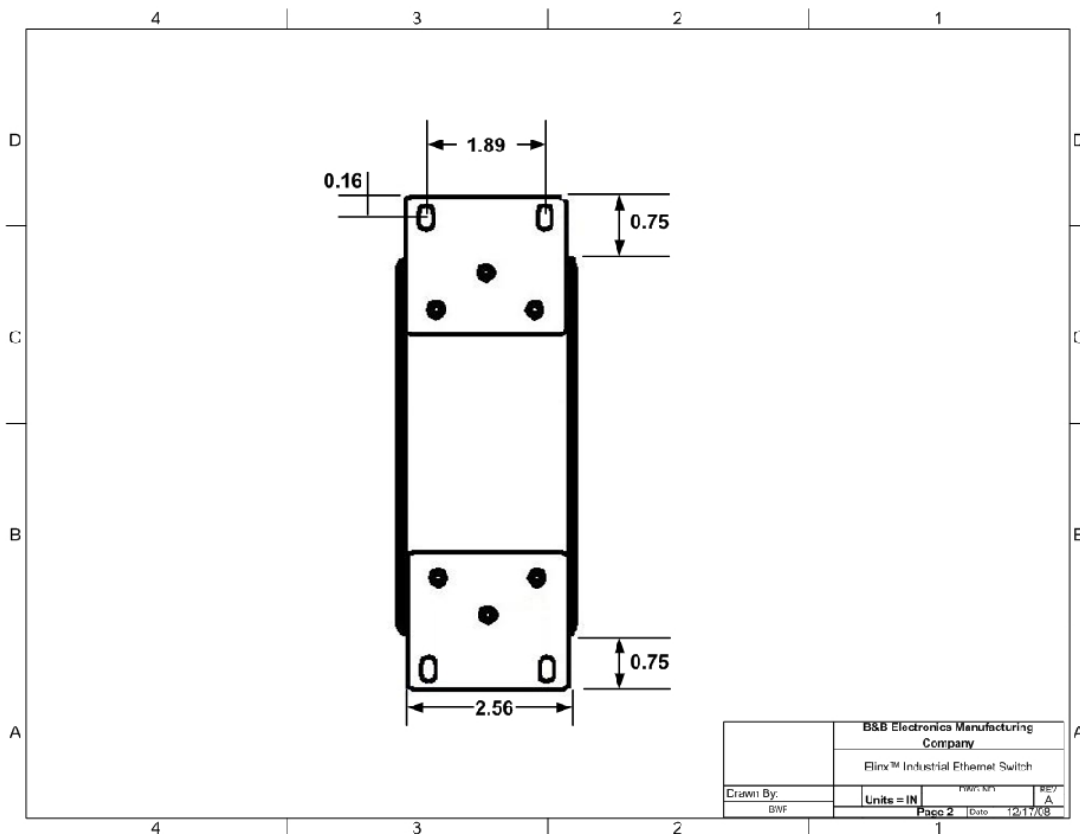
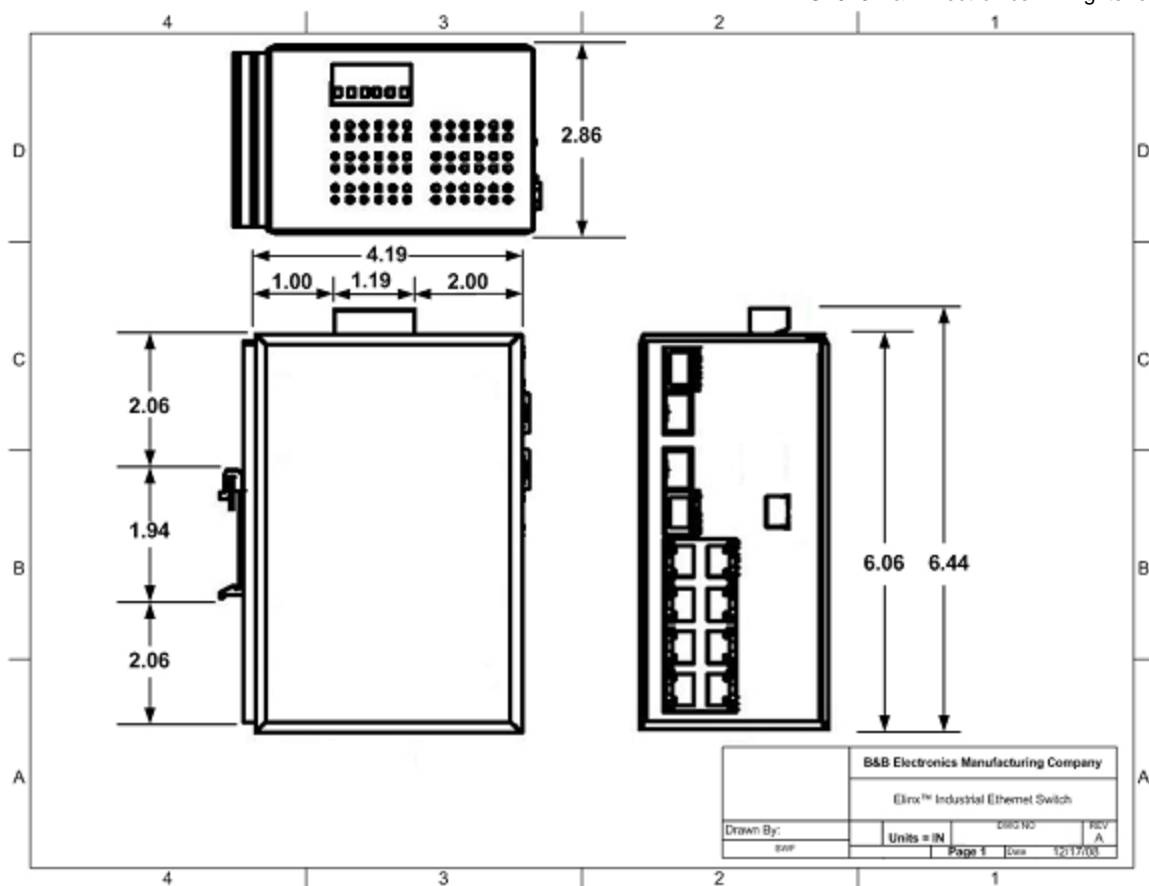
Input Voltage	Dual 48 VDC Inputs Reverse Polarity Protection
Power Connection	Removable Terminal Block
Wire Size	12 to 24 AWG
Power Use	9.6 Watts (Without PoE Load) 140 Watts (Full PoE Load)
Fault Output	1 Relay Output – Normally Closed

### Environmental

Op. Temp	- 40 to 75°C (-40 to 167°F)
Storage Temp	- 40 to 85°C (-40 to 185°F)
Op. Humidity	0 to 95%

### Mechanical

Enclosure	IP30 Metal Enclosure
Mounting	35mm DIN Rail or Panel Mount Attachments
Dimensions	(72mm (W) x 105mm (D) x 152mm (H) 2.84 x 4.13 x 5.98 inch



## X-ON Electronics

Largest Supplier of Electrical and Electronic Components

*Click to view similar products for [Ethernet Modules](#) category:*

*Click to view products by [B&B Electronics](#) manufacturer:*

Other Similar products are found below :

[TDKEZW3](#) [V23993-USB1029A](#) [100-POE4](#) [I210T1BLK](#) [X520QDA1](#) [BCM84794A1KFSBG](#) [X520DA2OCP](#) [808-38157](#) [7506GX2](#) [TC](#)  
[EXTENDER 2001](#) [ETH-2S](#) [105FX-SC-MDR](#) [110FX2-SC](#) [7000-P3201-P050150](#) [750-1515](#) [750-494](#) [750-495](#) [750-497](#) [750-501](#) [750-612](#)  
[750-613](#) [750-627](#) [750-643](#) [750-940](#) [753-440](#) [753-540](#) [753-650/003-000](#) [852-1322](#) [852-1328](#) [852-1812](#) [852-1813](#) [852-1816](#) [LANTICK PE-](#)  
[0-16](#) [LANTICK PE-16-0](#) [RBMTXLITE-L4X2.X.X.X.X.](#) [USR-TCP232-T2](#) [2017008](#) [EKI-7708E-4F-AE](#) [EKI-7708E-4FP-AE](#) [EKI-7708G-](#)  
[4FP-AE](#) [2352903-2](#) [753-620](#) [EGU-0702-SFP-T](#) [EKI-2706G-1GFPI-BE](#) [SW-125](#) [SW-525](#) [SW-725](#) [7000-74712-4780030](#) [7000-74712-](#)  
[4780060](#) [7000-74712-4780100](#) [7000-74712-4780150](#)