

RS-232 Null Modem Adapter

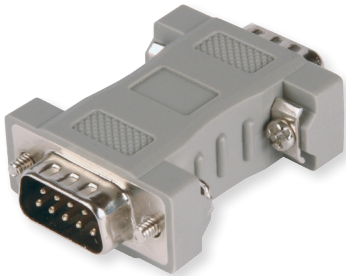
Model MMNM9

B+B SMARTWORX

Powered by

ADVANTECH

www.advantech-bb.com



PRODUCT FEATURES

- Interconnect two devices with similar DTE ports
- Reverse Pin 2 (Transmit Data) and Pin 3 (Receive Data)
- Connect TD to RD, DTR to DSR, and RTS to CTS
- Transfer port power from host to peripheral
- Ideal for use with port powered converters from B+B SmartWorx

Null modem adapters are used to connect two DTEs (computer, terminal, printer etc.) directly using a RS-232 serial cable. The original RS-232 standard only defined the connection of DTEs with DCEs (i.e. modems).

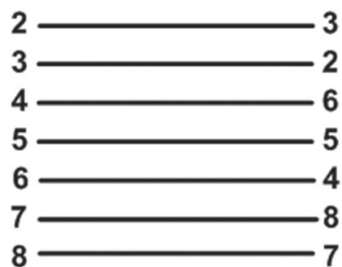
With a null modem adapter, the Transmit and Receive lines are cross-linked. Depending on the purpose, one or more handshake lines are cross-linked. Several wiring layouts are in use because the null modem connection is not covered by a standard. B+B SmartWorx' Null Modem adapter comes with a variety of connector options and pin outs to cover most common applications.

ORDERING INFORMATION

| MODEL NUMBER | DESCRIPTION |
|--------------|--|
| MMNM9 | Null Modem Adapter - DB9 Male / DB9 Male |

PIN OUT DIAGRAM

MMNM9 (DB9 Male to DB9 Male)



All product specifications are subject to change without notice.
MMNM9_NullModem_3517ds

X-ON Electronics

Largest Supplier of Electrical and Electronic Components

Click to view similar products for D-Sub Adapters & Gender Changers category:

Click to view products by B&B Electronics manufacturer:

Other Similar products are found below :

[243A10120X](#) [243A11070X](#) [243A13290X](#) [243A13460X](#) [300X10729X](#) [300X10759X](#) [GCHDLP26F26F](#) [30-9532P](#) [40-9586FP](#) [500-135](#) [40-9526HDMP](#) [56F715-003](#) [243A11800X](#) [243A10560X](#) [40-9526HDSP](#) [243A11060X](#) [56-745-005](#) [243A10580X](#) [56-725-001](#) [SC485](#) [173114-0088](#) [173114-0099](#) [76000670](#) [76000700](#) [NADB9MF](#) [2902323](#) [2902326](#) [40-9538F](#) [163A50049X](#) [NADB15FF-B](#) [NADB9FF-B](#) [243A10030X](#) [76000671](#) [163A50029X](#) [16-501373](#) [FCC17-A15AD-280](#) [FCC17-E09AD-210](#) [FCE17-A15AD-250](#) [FCE17-B25AD-210](#) [FCE17-B25AD-250](#) [FCE17B25AD290](#) [FCE17-E09AD-210](#) [FCE5709500430](#) [2310387](#) [GCHDLP44M44M](#) [GCLP25M25F](#) [FCC17A15AD2E0](#) [FCC17C37AD280](#) [FCC17-E09AD-280](#) [FCC17E09AD293](#)