

# 10/100/1000 Mbps Optical Ethernet Demarcation Unit

IE-Multiway



## PRODUCT FEATURES

- Versatile 4 port device
- SNMP Manageable
- Supports SFP fibers
- Extended Temperature
- Supports OAM, VLAN, 1+1 Revertive
- RS-232 CLI (Command Line Interface) Console Port

The IE-MultiWay is a value-based, Carrier-class managed Gigabit Ethernet solution that is ideal for use as a CPE device at the customer's network edge as well as in a fiber infrastructure. The IE-MultiWay comes standard with two SFP uplink ports for the providers' network connection and two 10/100/1000Base-T copper ports.

There are four distinct DIP Switch selectable configurations that the IE-MultiWay supports. Among them are a 1+1 Uplink Protection revertive mode, 1+1 Uplink Protection non-revertive mode, a 4-port Gigabit Switch, and a Dual Copper to Fiber SFP Media/Mode Converter (two gigabit fiber media converters in one).

The IE-MultiWay is an ideal solution for service providers' fiber networks because it combines media conversion with an advanced features set for network management and trouble shooting, including port based VLAN and VLAN trunks, IEEE 802.1ad (Q-in-Q) and a user definable EtherType. Information such as interface statistics, RMON1 statistics, and OAM status and control are a few of the many accessible features from the Serial CLI, Telnet CLI and SNMP Management Software.

## ACCESSORIES

- 806-39105 - DIN Rail Clip
- 806-39638 - Double-USB Power Cable, 36"/.9m
- 825-39951 - Serial Cable, MiniJack to DB9 (female)
- 895-39229 - Wall Mount Bracket

## ORDERING INFORMATION

MODEL NUMBER	FIBER	FIBER PORTS	ETHERNET PORTS	ETHERNET CONNECTOR
<b>IE-Multiway With AC to DC Power Adapter</b>				
858-11121	*SFP	2	2	RJ45
<b>IE-Multiway With Out AC to DC Power Adapter</b>				
854-11121	*SFP	2	2	RJ45

\* SFP modules are sold separately. Two (2) SFP transceivers are needed for full device functionality.

## IE-SFP MODULES: 100 TO 155 MBPS

MODEL NUMBER	DESCRIPTION	FIBER TYPE	RANGE	POWER BUDGET
808-38101	MM850	LC	2 km	14.5 (db)
808-38103	SM1310	LC	15 km	13 (db)
808-38104	SM1310/PLUS	LC	40 km	31 (db)
808-38105	SM1550/LONG	LC	80 km	31 (db)

## IE-SFP MODULES: 1 GBPS GIGABIT ETHERNET

MODEL NUMBER	DESCRIPTION	FIBER TYPE	RANGE	POWER BUDGET
808-38201	MM850	LC	550 m	7.5 (db)
808-38202	SM1310	LC	10 km	13 (db)
808-38203	SM1310/PLUS	LC	30 km	17 (db)
808-38204	SM1550/LONG	LC	40 km	17 (db)
808-38205	SM1550/XLONG	LC	70 km	23 (db)



**IN THE FIELD**  
**Intelligent Facilities:**  
**Controlling Access & Security**  
 Industry: Security  
 Product: IE-MultiWay Ethernet  
 Media Converter



[www.bb-elec.com/  
Access](http://www.bb-elec.com/Access)

Carrier data charges may apply.



iView: Windows 2000/XP/Vista/Win7

# 10/100/1000 Mbps Optical Ethernet Demarcation Unit

IE-Multiway



## SPECIFICATIONS

### TECHNICAL

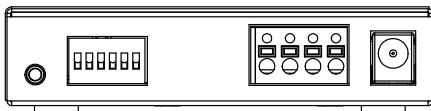
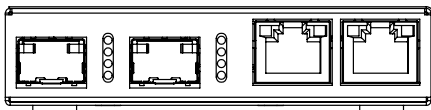
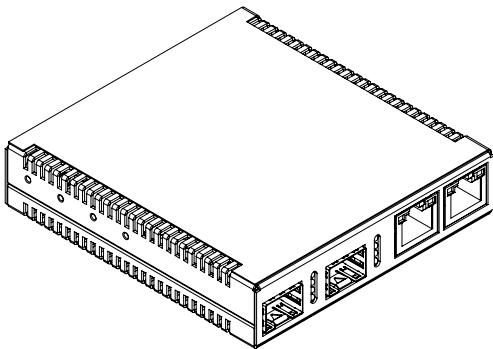
- Plug-and-Play Operation
- 2 x RJ-45 and 2 x SFP ports (SFPs sold separately)
- IEEE 802.3i 10Base-T over twisted pair
- IEEE 802.3u 100Base-TX over twisted pair
- IEEE 802.3u 1000Base-T over twisted pair
- IEEE 802.3u 100Base-FX
- IEEE 802.3u 1000Base-X
- Jumbo Frames support (up to 10240 bytes)
- Auto Negotiation, Auto-Cross for MDI/MDIX
- Includes diagnostic LEDs
- 1+1 uplink protection (< 50 mSecs)
- Extended temperature range from -40° to +85° C
- 48 VDC terminal for Telco applications
- Compatible with all standard MSA compliant SFP transceivers

### STANDARDS COMPLIANCE

- IEEE 802.3ah
- IEEE 802.1ag
- Y.1731
- SFP-MSA SFP standard (September 14, 2000)
- SFF-8472 DDMI standard (Revision 1.0)

## MECHANICAL DIAGRAM

(dimensions in inches & millimeters)



### MECHANICAL

- Dimensions 0.86" H x 3.66" W x 3.88" D (2.2 x 9.38 x 9.94 cm)
- Enclosure Metal
- Shipping Weight 1.0 lbs (0.45 kg)

### POWER

- 5 to 24 VDC (Barrel)
- 48 VDC Telco (Terminal)

### POWER INFORMATION

- Min: 3.15W (1 optic SFP [1 Gbps], 1 Tx [100 Mbps])
- Max: 7.0W (2 Cu SFP [1 Gbps], 2 Tx [1 Gbps])

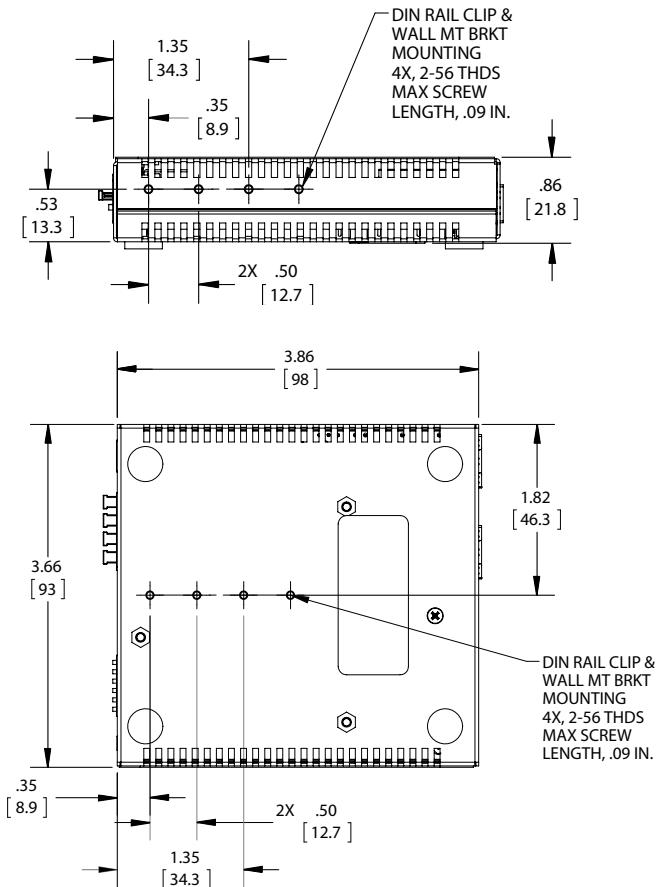
\* Power consumption is based on SFP types

### ENVIRONMENTAL

- Operating Temperature w/ Franmar AC Wall Adapter +14° to +122° F (-10° to +50° C)
- Operating Temperature w/DC Configuration -40° to +185° F (-40° to +85° C)
- Storage Temperature -49° to +185° F (-45° to +85° C)
- Operating Humidity 10 to 95% Non-condensing

### REGULATORY APPROVALS

- FCC Class A (Using 48V Telco-type power)
- FCC Class B (Using all other power options)
- UL/cUL, CE



## X-ON Electronics

Largest Supplier of Electrical and Electronic Components

*Click to view similar products for [Ethernet Modules](#) category:*

*Click to view products by [B+B SmartWorx](#) manufacturer:*

Other Similar products are found below :

[TDKEZW3](#) [V23993-USB1029A](#) [100-POE4](#) [I210T1BLK](#) [X520QDA1](#) [BCM84794A1KFSBG](#) [X520DA2OCP](#) [808-38157](#) [7506GX2](#) [TC](#)  
[EXTENDER 2001](#) [ETH-2S](#) [105FX-SC-MDR](#) [110FX2-SC](#) [7000-P3201-P050150](#) [750-1515](#) [750-494](#) [750-495](#) [750-497](#) [750-501](#) [750-612](#)  
[750-613](#) [750-627](#) [750-643](#) [750-940](#) [753-440](#) [753-540](#) [753-650/003-000](#) [852-1322](#) [852-1328](#) [852-1812](#) [852-1813](#) [852-1816](#) [LANTICK PE-](#)  
[0-16](#) [LANTICK PE-16-0](#) [RBMTXLITE-L4X2.X.X.X.X.](#) [USR-TCP232-T2](#) [2017008](#) [EKI-7708E-4F-AE](#) [EKI-7708E-4FP-AE](#) [EKI-7708G-](#)  
[4FP-AE](#) [2352903-2](#) [753-620](#) [EGU-0702-SFP-T](#) [EKI-2706G-1GFPI-BE](#) [SW-125](#) [SW-525](#) [SW-725](#) [7000-74712-4780030](#) [7000-74712-](#)  
[4780060](#) [7000-74712-4780100](#) [7000-74712-4780150](#)