

ESW108-A

8FE Slim-type Unmanaged Industrial Ethernet Switch with Low Vac Power Input



Features

- 8 x fast Ethernet ports with auto MDI/MDI-X
- Supports 10/100 Mbps auto negotiation
- Compact size with DIN rail and wall mount
- Supports redundant 12~48 V_{DC} or 10~24 V_{AC} power input
- Wide operating temperature range of -40 ~ 75°C
- C1D2 for hazardous locations

Introduction

The ESW108-A provides a fast Ethernet solution. Power is delivered via either +12 ~ 48 V_{DC} or 10~24V_{AC} redundant input design. The ESW108-A comes with a compact metal enclosure, making it suitable for installation in narrow areas. The IP30-rated enclosure ensures protection against dusty industrial environments. The ESW108-A is also compliant with C1D2, making it perfect for harsh environments.

Specifications

Communications

- **Standard IEEE** 802.3, 802.3u, 802.3x
- **LAN** 10/100BASE-TX
- **Transmission Distance** Up to 100 m
- **Transmission Speed** Up to 100 Mbps

Interface

- **Connectors** 8 x RJ45
4-pin removable terminal (power)
- **LED Indicators** PWR1, PWR2
10/100TX: link/activity, duplex

Power

- **Power Consumption** 5.1 Watts
- **Power Input** 12~48 V_{DC} or 10~24 V_{AC}, redundant dual inputs

Mechanism

- **Dimensions (W x H x D)** 30 x 140 x 95 mm (1.18" x 5.51" x 3.74")
- **Enclosure** IP30, metal housing with solid mounting kit
- **Mounting** DIN rail, wall

Protection

- **Reverse Polarity** Present
- **Overload Current** Present

Environment

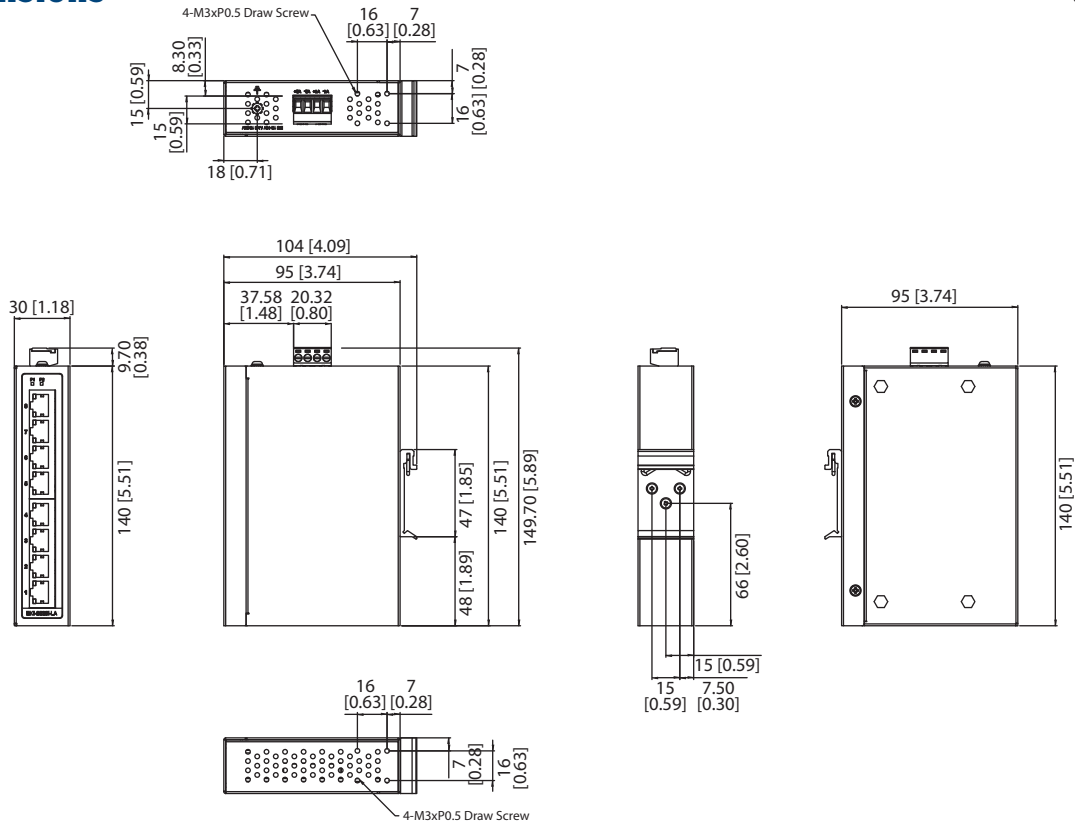
- **Operating Temperature** -40 ~ 75 °C (-40 ~ 167 °F)
- **Storage Temperature** -40 ~ 85 °C (-40 ~ 185 °F)
- **Operating Humidity** 10 ~ 95% (non-condensing)
- **Storage Humidity** 10 ~ 95% (non-condensing)
- **MTBF** TBD

Certification

- **Safety** EN 60950, UL60950, Class 1 Division 2
- **EMI** CE, FCC Class A
- **EMS** EN 61000-4-2 (Level 3)
EN 61000-4-3 (Level 3)
EN 61000-4-4 (Level 3)
EN 61000-4-5 (Level 3)
EN 61000-4-6 (Level 3)
EN 61000-4-8 (Level 3)
Shock IEC 60068-2-27
Freefall IEC 60068-2-32
Vibration IEC 60068-2-6

Dimensions

Unit: mm [in.]



Panel Cut-out Dimensions: 30 x 140 x 95 mm (1.18" x 5.51" x 3.74")

Ordering Information

- ESW108-A 8FE Slim-type Unmanaged Industrial Ethernet Switch with Low Vac Power Input

X-ON Electronics

Largest Supplier of Electrical and Electronic Components

Click to view similar products for [Ethernet Modules](#) category:

Click to view products by [B+B SmartWorx](#) manufacturer:

Other Similar products are found below :

[TDKEZW3](#) [V23993-USB1029A](#) [100-POE4](#) [I210T1BLK](#) [X520QDA1](#) [BCM84794A1KFSBG](#) [X520DA2OCP](#) [808-38157](#) [7506GX2](#) [TC](#)
[EXTENDER 2001 ETH-2S](#) [105FX-SC-MDR](#) [110FX2-SC](#) [BCM54291B0IQLEG](#) [7000-P3201-P050150](#) [750-1415](#) [750-494](#) [750-495](#) [750-612](#)
[750-613](#) [750-627](#) [750-643](#) [750-940](#) [753-440](#) [753-540](#) [753-650/003-000](#) [852-1322](#) [852-1328](#) [852-1812](#) [852-1813](#) [852-1816](#) [LANTICK PE-](#)
[0-16](#) [LANTICK PE-16-0](#) [RBMTXLITE-L4X2.X.X.X.X.](#) [USR-TCP232-T2](#) [2017008](#) [EKI-7708E-4F-AE](#) [EKI-7708E-4FP-AE](#) [EKI-7708G-](#)
[4FP-AE](#) [2352903-2](#) [753-620](#) [EGU-0702-SFP-T](#) [SW-125](#) [SW-525](#) [SW-725](#) [1005957](#) [1006191](#) [304TX-N](#) [WIZ107SR_TTL](#) [ES-320](#)
[TDKEZW5](#)