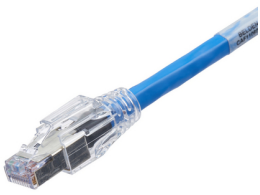


Part Number: 10GX F/UTP CMR PIGTAILS

10GX F/UTP CMR Pigtailes



Product Description

10GX F/UTP CMR Pigtailes

Technical Specifications

Product Overview

Environmental Space:	Riser
Suitable Applications:	IBDN Shielded System 10GX, TIA Category 6A, ISO Class EA, 10GBASE-T

Physical Characteristics (Overall)

Total Number of Pairs:	4
Overall Nominal Diameter:	0.275 in
Packaging:	Individually packaged in a clear plastic bag.

Connectors

Materials

Description	Material	Color
Boot	Lexan	Translucent
Conductor	BC - Bare Copper	
Front Connection	Blades Phosphor Bronze with 50u inch Gold over Nickel Plating	
Inner Jacket	PVC - Polyvinyl Chloride	
Insulation	PO - Polyolefin	
Outer Jacket	PVC - Polyvinyl Chloride	

Electrical Characteristics

Dielectric Strength:	1,000 V RMS @ 60 Hz for 1 minute
Current Rating:	1.500 A
Insulation Resistance:	500 M-Ohm Minimum
Max Contact Resistance:	20 mOhm

Temperature Range

Installation Temp Range:	-10°C To +60°C
Storage Temp Range:	-40°C To +70°C
Operating Temp Range:	-10°C To +60°C

Mechanical Characteristics

Min Bend Radius (Overall Cable):	2.400 in
Plug /Jack Compatibility:	RJ45

Termination Interface

Connection	Durabilities
Mated Connection	750 Cycles

Standards

UL Rating:	Riser
Data Category:	Category 6A
Telecommunications Standards:	Category 6A - TIA 568-C.2, Class EA - ISO/IEC 11801:2002 Ed.2 Amendment 2
Other Standards:	FCC Part 68, Subpart F, IEC 60603-7

Applicable Environmental and Other Programs

EU Directive 2002/95/EC (RoHS):	Yes
EU RoHS Compliance Date (yyyy-mm-dd):	2006-01-01
MII Order #39 (China RoHS):	EUP 50

Flammability, LS0H, Toxicity Testing

Safety Listing:	c(UL)us Listed
-----------------	----------------

Part Number

Related Parts:	10GX Shielded Modular Jacks and Couplers, 10GX Shielded Patch Panels, 10GX IDC Blocks
----------------	---

Variants

Item #	Color	Length
CAF1200015	Black	15 ft
CAF1200020	Black	20 ft
CAF1200025	Black	25 ft
CAF1200030	Black	30 ft
CAF1200035	Black	35 ft
CAF1200040	Black	40 ft
CAF1200045	Black	45 ft
CAF1200050	Black	50 ft
CAF1300015	Black	15 ft
CAF1300025	Black	25 ft
CAF1300050	Black	50 ft
CAF1206015	Blue	15 ft
CAF1206020	Blue	20 ft
CAF1206025	Blue	25 ft
CAF1206030	Blue	30 ft
CAF1206035	Blue	35 ft
CAF1206040	Blue	40 ft
CAF1206045	Blue	45 ft
CAF1206050	Blue	50 ft
CAF1206100	Blue	100 ft
CAF1306015	Blue	15 ft
CAF1306025	Blue	25 ft
CAF1306050	Blue	50 ft
CAF1208015	Gray	15 ft
CAF1208020	Gray	20 ft
CAF1208025	Gray	25 ft
CAF1208030	Gray	30 ft
CAF1208035	Gray	35 ft
CAF1208040	Gray	40 ft
CAF1208045	Gray	45 ft
CAF1208050	Gray	50 ft
CAF1308015	Gray	15 ft
CAF1308025	Gray	25 ft
CAF1308050	Gray	50 ft
CAF1205015	Green	15 ft
CAF1205020	Green	20 ft
CAF1205025	Green	25 ft
CAF1205030	Green	30 ft
CAF1205035	Green	35 ft
CAF1205040	Green	40 ft
CAF1205045	Green	45 ft
CAF1205050	Green	50 ft
CAF1305015	Green	15 ft

CAF1305025	Green	25 ft
CAF1305050	Green	50 ft
CAF1209015	White	15 ft
CAF1209020	White	20 ft
CAF1209025	White	25 ft
CAF1209030	White	30 ft
CAF1209035	White	35 ft
CAF1209040	White	40 ft
CAF1209045	White	45 ft
CAF1209050	White	50 ft
CAF1309015	White	15 ft
CAF1309025	White	25 ft
CAF1309050	White	50 ft
CAF1204015	Yellow	15 ft
CAF1204020	Yellow	20 ft
CAF1204025	Yellow	25 ft
CAF1204030	Yellow	30 ft
CAF1204035	Yellow	35 ft
CAF1204040	Yellow	40 ft
CAF1204045	Yellow	45 ft
CAF1204050	Yellow	50 ft
CAF1304015	Yellow	15 ft
CAF1304025	Yellow	25 ft
CAF1304050	Yellow	50 ft

Product Notes

Labeling:	Belden Part Number, Performance Acronym, Wiring Scheme and Cord Length.
-----------	---

History

Update and Revision:	Revision Number: 0.158 Revision Date: 07-11-2019
----------------------	--

© 2019 Belden, Inc

All Rights Reserved.

Although Belden makes every reasonable effort to ensure their accuracy at the time of this publication, information and specifications described here in are subject to error or omission and to change without notice, and the listing of such information and specifications does not ensure product availability.

Belden provides the information and specifications herein on an "ASIS" basis, with no representations or warranties, whether express, statutory or implied. In no event will Belden be liable for any damages (including consequential, indirect, incidental, special, punitive, or exemplary damages) whatsoever, even if Belden has been advised of the possibility of such damages, whether in an action under contract, negligence or any other theory, arising out of or in connection with the use, or inability to use, the information or specifications described herein.

All sales of Belden products are subject to Belden's standard terms and conditions of sale.

Belden believes this product to be in compliance with all applicable environmental programs as listed in the data sheet. The information provided is correct to the best of Belden's knowledge, information and belief at the date of its publication. This information is designed only as a general guide for the safe handling, storage, and any other operation of the product itself or the one that it becomes a part of. The Product Disclosure is not to be considered a warranty or quality specification. Regulatory information is for guidance purposes only. Product users are responsible for determining the applicability of legislation and regulations based on their individual usage of the product.

X-ON Electronics

Largest Supplier of Electrical and Electronic Components

Click to view similar products for [Ethernet Cables / Networking Cables](#) category:

Click to view products by [Belden](#) manufacturer:

Other Similar products are found below :

[73-6670-7](#) [73-6680-15](#) [73-7797-25](#) [MCJB2-10P6Q7-120](#) [84909-0204](#) [1200700174](#) [1200860368](#) [E16A06002M030](#) [E200102-009-S1](#)
[AX105346-EW](#) [MT14-187L](#) [17-103530](#) [ERWPAB3002M005](#) [190-038045-01](#) [NK5EPC18RDY](#) [NK5EPC18VLY](#) [NK5EPC18YLY](#)
[NK5EPC1GRY](#) [NK5EPC4Y](#) [NK5EPC6YLY](#) [NK5EPC8BLY](#) [NK5EPC9YLY](#) [1969343-6](#) [C501100010](#) [C501106002](#) [C501106007](#)
[C501106015](#) [C501106025](#) [C601102010](#) [C601104010](#) [C601106007](#) [C601106015](#) [2142758-2](#) [2168427-2](#) [CAT1106007](#) [21949-1](#) [2J1866A](#)
[RJF SFTP 5E 0500](#) [AX100351](#) [MN14CEC/ST](#) [C501100015](#) [C501106004](#) [C501106010](#) [C5F1108007](#) [C601104004](#) [C601106004](#)
[CA21106004](#) [CA21106010](#) [CA21106015](#) [CA21109007](#)