



## SNAP-N-SEAL<sup>®</sup> “F” SERIES MALE ONE-PIECE COMPRESSION CONNECTORS

Thomas & Betts Snap-N-Seal<sup>®</sup> One-Piece Compression Connectors, feature a user-friendly, pre-positioned and detachably coupled plastic sleeve, incorporating time-proven advantages for a reliable connection.

Snap-N-Seal<sup>®</sup> One Piece Connectors use the same proven 360° compression design and installation tools as other Snap-N-Seal<sup>®</sup> products

- To reduce assembly time and simplify installation, the plastic sleeve is pre-positioned and detachably coupled to the connector body.
- True 360° compression onto cable ensures superior RF shielding performance, -90 dB effective shielding (typical on 60% bonded foil cable).
- Permanently stamped part numbers and color-coded sleeves for easy identification before and after installation.
- Installation requires one-step 1/4" - 1/4" cable preparation and standard compression tools used for all 59 & 6 series Snap-N-Seal<sup>®</sup> product families.
- Quad-sealed system prevents moisture migration.
- Incorporates a NiTin finish plus UV resistant plastic and O-rings to provide a reliable, environmentally sealed product.
- Superb return loss performance of -30 dB to 1GHz.
- Cable retention exceeds 40 lb. minimum as specified by the SCTE.

### PHYSICAL PROPERTIES

- Nut, Post and Collar: Brass
- Nut and Collar Finish: Nickel Tin
- Post Finish: Tin Plated
- O-Rings: Ethylene Propylene

### ELECTRICAL PROPERTIES

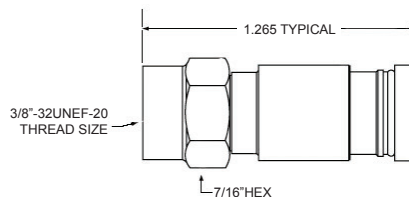
- Return Loss: ≥-30 dB up to 1GHz Typical
- Insertion Loss: ≤-0.18 dB up to 1GHz Typical
- RFI Shielding: -90 dB Typical (60% Bonded Foil)

### MECHANICAL PROPERTIES

- Cable Retention: 40 lbs min.  
Complies to SCTE IPS-SP-401
- Cable Insertion Force: <20 lbs

### ENVIRONMENTAL PROPERTIES

- Temperature Rating: -40°F (-40°C) to 140°F (60°C)
- Moisture Migration: Passes ANSI/SCTE 60 2004



### ORDERING INFORMATION

CATALOG NUMBER	POST I.D.	SLEEVE I.D.	SLEEVE COLOR	TOOL <sup>†</sup>	INNER PACK	OUTER PACK
<b>“F” SERIES MALE ONE-PIECE COMPRESSION CONNECTORS</b>						
SNS1P59	.154	.253	Orange	1+2 or 3	50	1000
SNS1P59QS	.154	.275	Green	1+2 or 3	50	1000
SNS1P59HEC	.154	.290	White	1+2 or 3	50	1000
SNS1P6	.191	.290	Blue	1+2 or 3	50	1000
SNS1P6QS	.191	.315	Violet	1+2 or 3	50	1000

†Tool: 1 = CST596 or CST596711 2 = SNSUTL 3 = IT1000

Please ask your Thomas & Betts representative for a complete catalog of quality Thomas & Betts products or visit us at [www.tnb.com](http://www.tnb.com). For customer service, call **1-800-685-9452**. For technical questions, call **1-888-862-3289**.

**Thomas & Betts Corporation**  
Communications Products Group  
Tel: 800-920-0328 • 901-252-5000  
Fax: 800-283-6756 • 901-252-1380

© 2007 Thomas & Betts Corporation. All rights reserved.

DATA SHEET # CDS-SNS1P

## ULTIMATE™ SNAP-N-SEAL® “F” SERIES COMPRESSION CONNECTOR

Thomas & Betts introduces the Ultimate™ Snap-N-Seal® Compression Connector. One connector for 6 Series SCTE specification drop cables including 60% braid, tri-shield and quad shield.

Look for the classic design of this Thomas & Betts connector. With its user-friendly, pre-positioned and detachably coupled plastic sleeve, the Ultimate™ Snap-N-Seal® Connector incorporates time-proven advantages for a reliable connection.

- To reduce assembly time and simplify installation, the plastic sleeve is pre-positioned and detachably coupled to the connector body.
- The plastic sleeve's separability from the connector body further simplifies difficult installations.
- True 360° compression onto cable ensures superior RF shielding performance, -90 dB effective shielding (typical on 60% bonded foil cable).
- Installation requires one-step 1/4" - 1/4" cable preparation and standard compression tools used for all 59 & 6 Series Snap-N-Seal® product families.
- Quad-sealed system prevents moisture migration.
- Incorporates a NiTin finish plus UV resistant plastic and O-rings to provide a reliable, environmentally sealed product.
- Cable retention exceeds 40 lb. minimum as specified by the SCTE.



### PHYSICAL PROPERTIES

- Nut, Post and Collar: Brass
- Nut and Collar Finish: Nickel Tin
- Post Finish: Tin Plated
- O-Rings: Ethylene Propylene

### ELECTRICAL PROPERTIES

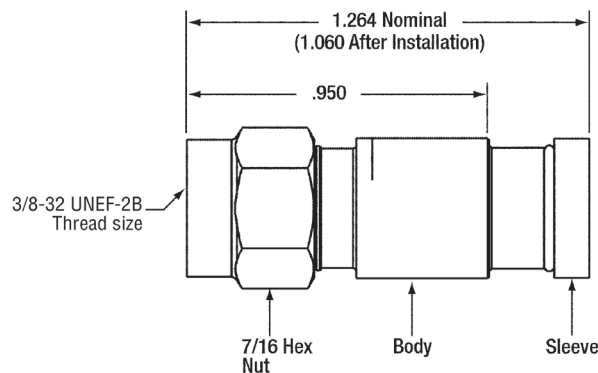
- Return Loss:  $\geq -30$  dB up to 1GHz Typical
- Insertion Loss:  $\leq -0.18$  dB up to 1GHz Typical
- RFI Shielding: -90 dB Typical (60% Bonded Foil)

### MECHANICAL PROPERTIES

- Cable Retention: 40 lbs min.  
Complies to SCTE IPS-SP-401
- Cable Insertion Force: <20 lbs Typical

### ENVIRONMENTAL PROPERTIES

- Temperature Rating: -40°F (-40°C) to 140°F (60°C)
- Moisture Migration: Passes ANSI/SCTE 60 2004



### ORDERING INFORMATION

CATALOG NUMBER	POST I.D.	SLEEVE I.D.	SLEEVE COLOR	TOOL†	INNER PACK	OUTER PACK
<b>“F” SERIES COMPRESSION CONNECTOR</b>						
SNS1P6U	.191	.293	Red	1+2 or 3	50	1000

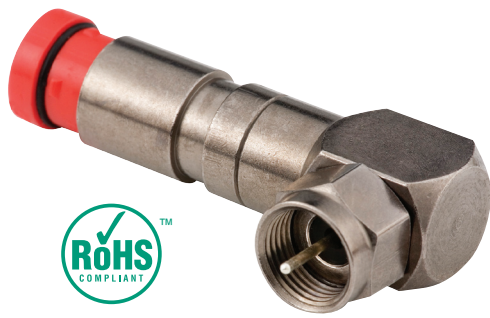
†Tool: 1 = CST596 or CST596711 2 = SNSUTL 3 = IT1000

Please ask your Thomas & Betts representative for a complete catalog of quality Thomas & Betts products or visit us at [www.tnb.com](http://www.tnb.com). For customer service, call **1-800-685-9452**. For technical questions, call **1-888-862-3289**.

© 2007 Thomas & Betts Corporation. All rights reserved.

DATA SHEET # CDS-SNSULT

**Thomas & Betts Corporation**  
Communications Products Group  
Tel: 800-920-0328 • 901-252-5000  
Fax: 800-283-6756 • 901-252-1380



## ULTIMATE™ SNAP-N-SEAL® RIGHT ANGLE “F” MALE ONE PIECE COMPRESSION CONNECTOR

Thomas & Betts introduces the right angle Ultimate™ Snap-N-Seal® compression connector – one connector for 6 series SCTE specification drop cables including 60% braid, tri-shield and quad shield.

The 90° Ultimate™ Snap-N-Seal® connector is designed for tight fitting drop applications or situations where space is a premium.

### PHYSICAL PROPERTIES

- Body Components: Brass
- Nut and Collar Finish: NiTin Plated
- Post Finish: Tin Plated
- Terminal Finish: Silver Plated
- O-Ring: Ethylene Propylene

### ELECTRICAL PROPERTIES

- Return Loss:  $\geq -30$  dB up to 1 GHz typical
- Insertion Loss:  $\leq -0.18$  dB up to 1 GHz typical
- RFI Shielding: -90 dB Typical (60% Bonded Foil)

### MECHANICAL PROPERTIES

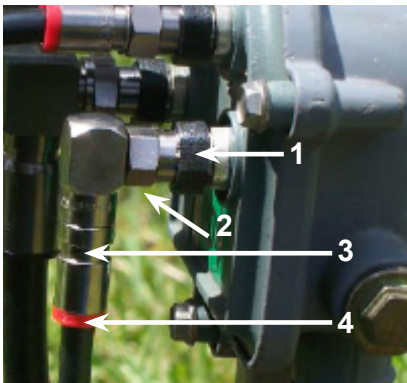
- Cable Retention: 40 pounds minimum
- Cable Insertion Force: <20 pounds

### ENVIRONMENTAL PROPERTIES

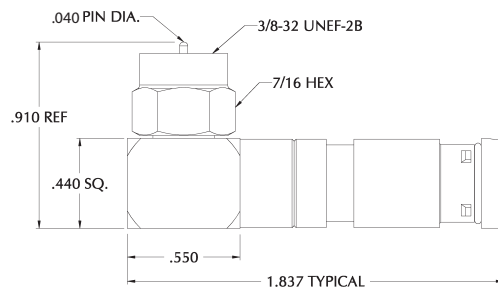
- Temperature Rating: -40°F (-40°C) to 140°F (60°C)
- Salt Spray Exposure: Passes ASTM B 117, 1000 hours
- Moisture Migration: Passes ANSI/SCTE 60 2004

- To reduce assembly time and simplify installations, the plastic sleeve is pre-positioned and detachably coupled to the connector body.
- The plastic sleeve's separability from the connector body further simplifies difficult installations.
- True 360° compression onto cable ensures superior RF shielding performance, -90 dB effective shielding (typical on 60% bonded foil cable).
- Installation requires one-step 1/4" – 1/4" cable preparation and standard compression tools used for all 59 & 6 series Snap-N-Seal product families.
- Quad-sealed system prevents moisture migration.
- Incorporates a RoHS Compliant, NiTin Plating plus UV resistant plastic and O-rings to provide a reliable, environmentally sealed product.
- Cable retention exceeds 40 lb. minimum as recommended by the SCTE.

### Quad-sealed System



1. Thread Protector
2. Internal O-Ring
3. Internal O-Ring
4. Plastic Sealing Sleeve



### ORDERING INFORMATION

CATALOG NUMBER	POST I.D.	SLEEVE I.D.	SLEEVE COLOR	TOOL <sup>1</sup>	INNER PACK	OUTER PACK
<b>RIGHT ANGLE “F” MALE ONE PIECE COMPRESSION CONNECTOR</b>						
90SNS1P6U	.191	.315	Red	1+2	40	480

<sup>1</sup> Tool: 1=CST596596 or CST596711, 2=SNSUTL

Please ask your Thomas & Betts representative for a complete catalog of quality Thomas & Betts products or visit us at [www.tnb.com](http://www.tnb.com). For customer service, call 1-800-685-9452. For technical questions, call 1-888-862-3289.

©2008 Thomas & Betts Corporation. All rights reserved.

DATA SHEET # CDS-90SNS1P6U

**Thomas & Betts Corporation**  
Communications Products Group  
Tel: 800-920-0328 \* 901-252-5000  
Fax: 800-283-6756 \* 801-252-1380

**Snap-N-Seal® “F” Series Male Environmentally Sealed Connectors for Series 59 & 6 Cables**



LRC Snap-N-Seal® connectors are environmentally sealed to protect drops from harsh environments. Through a unique 360° compression process, Snap-N-Seal® connectors also offers the signal leakage protection required for today’s systems.

**DESIGN ADVANTAGES**

- Quad-sealed system prevents moisture from migrating into the connection.
- Connectors manufactured from high quality 360 brass, cadmium plated with iridescent chromate coating for maximum corrosion resistance.
- Design incorporates UV resistant plastic and O-rings providing a reliable, environmentally sealed product.
- 1/4”-1/4” cable preparation is standard.
- Multiple tool options make installation fast, easy and reliable.
- Product number is permanently stamped on connectors for easy identification.

**PROPERTIES**

**PHYSICAL**

NUT, POST AND COLLAR: BRASS CDA360  
 NUT AND COLLAR FINISH: CADMIUM PLATED WITH IRIDESCENT CHROMATE COATING  
 POST FINISH: TIN PLATED  
 O-RING: ETHYLENE PROPYLENE

**ELECTRICAL**

RETURN LOSS: ≥ -30 dB UP TO 1 GHz TYPICAL  
 INSERTION LOSS: ≤ -0.18 dB UP TO 1 GHz TYPICAL  
 RFI SHIELDING: -95 dB TYPICAL (60% BONDED FOIL CABLE)

**MECHANICAL**

CABLE RETENTION: 40 LBS. MIN. COMPLIES TO SCTE IPS-SP-404

**ENVIRONMENTAL**

TEMPERATURE RATING: -40° F (-40°C) TO 140° F (60°C)

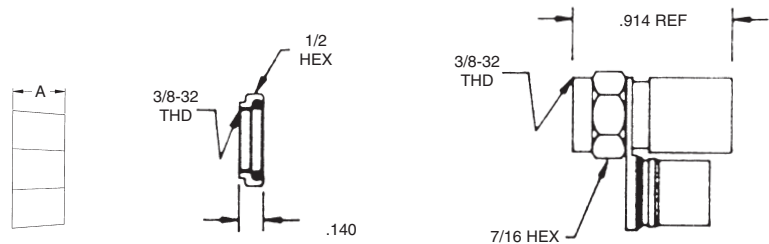


FIG. A

FIG. B

FIG. C

**Ordering Information**

CATALOG NUMBER	FIG.	POST I.D.	SLEEVE I.D.	SLEEVE COLOR	TOOL†	DIM A	INNER PACK	OUTER PACK
SNS59	C	.154	.253	Orange	1 or 2+3	-	50	1000
SNS59NS	B+C	.154	.253	Orange	1 or 2+3	-	50	1000
SNS59TP275	A+C	.154	.253	Orange	1 or 2+3	.275	50	500
SNS59TP450	A+C	.154	.253	Orange	1 or 2+3	.450	50	500
SNS59QS	C	.154	.275	Green	1 or 2+3	-	50	1000
SNS59QSNS	B+C	.154	.275	Green	1 or 2+3	-	50	1000
SNS59QSTP275	A+C	.154	.275	Green	1 or 2+3	.275	50	1000
SNS59QSTP450	A+C	.154	.275	Green	1 or 2+3	.450	50	500
SNS59HEC	C	.154	.290	White	1 or 2+3	-	50	1000
SNS6	C	.191	.290	Blue	1 or 2+3	-	50	1000
SNS6NS	B+C	.191	.290	Blue	1 or 2+3	-	50	1000
SNS6TP275	A+C	.191	.290	Blue	1 or 2+3	.275	50	500
SNS6TP450	A+C	.191	.290	Blue	1 or 2+3	.450	50	500
SNS6QS	C	.191	.315	Violet	1 or 2+3	-	50	1000
SNS6QSNS	B+C	.191	.315	Violet	1 or 2+3	-	50	1000
SNS6QSTP275	A+C	.191	.315	Violet	1 or 2+3	.275	50	1000
SNS6QSTP450	A+C	.191	.315	Violet	1 or 2+3	.450	50	500
SNS6PLA	C	.191	.253	Orange	1 or 2+3	-	50	1000

†Tool: 1 = IT1000, 2 = CST596 or CST596711, 3 = SNSUTL

**Snap-N-Seal® “F” Series Male Environmentally Sealed Connectors for Series 7 & 11 Cables**



LRC Snap-N-Seal® connectors are environmentally sealed to protect drops from harsh environments. Through a unique 360° compression process, Snap-N-Seal® connectors also offer the sustainable signal leakage protection required for today’s systems.

**DESIGN ADVANTAGES**

- Quad-sealed system prevents moisture from migrating into the connection.
- Connectors manufactured from high quality 360 brass, cadmium plated with iridescent chromate coating for maximum corrosion resistance.
- Design incorporates UV resistant plastic and O-rings providing a reliable, environmentally sealed product.
- 1/4”-1/4” cable preparation is standard.
- Product number is permanently stamped on connectors for easy identification.

**PROPERTIES**

**PHYSICAL**

NUT, POST AND COLLAR: BRASS CDA360  
 NUT AND COLLAR FINISH: CADMIUM PLATED WITH IRIDESCENT CHROMATE COATING  
 POST FINISH: TIN PLATED  
 O-RING: ETHYLENE PROPYLENE

**ELECTRICAL**

RETURN LOSS: ≥ -30 dB UP TO 1 GHz TYPICAL  
 INSERTION LOSS: ≤ -0.18 dB UP TO 1 GHz TYPICAL  
 RFI SHIELDING: -95 dB TYPICAL (60% BONDED FOIL CABLE)

**MECHANICAL**

CABLE RETENTION: 40 LBS. MIN. COMPLIES TO SCTE IPS-SP-404

**ENVIRONMENTAL**

TEMPERATURE RATING: -40° F (-40°C) TO 140° F (60°C)

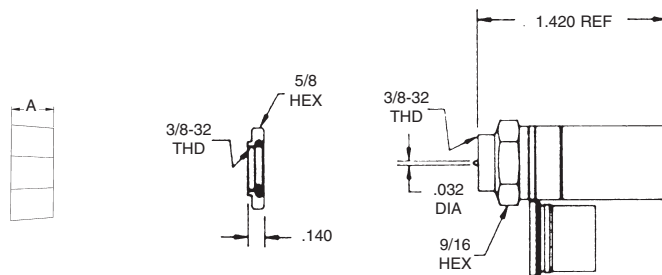


FIG. A

FIG. B

FIG. C

**Ordering Information**

CATALOG NUMBER	FIG.	POST I.D.	SLEEVE I.D.	SLEEVE COLOR	TOOL†	DIM A	INNER PACK	OUTER PACK
SNS7B	C	.238	.340	Black	1+2	-	36	288
SNS7BNS	B+C	.238	.340	Black	1+2	-	36	288
SNS7BTP275	A+C	.238	.340	Black	1+2	.275	36	288
SNS7BTP450	A+C	.238	.340	Black	1+2	.450	36	288
SNS7BQ	C	.238	.355	Black	1+2	-	36	288
SNS7BQNS	B+C	.238	.355	Black	1+2	-	36	288
SNS7BQTP275	A+C	.238	.355	Black	1+2	.275	36	288
SNS7BQTP450	A+C	.238	.355	Black	1+2	.450	36	288
SNS11AS	C	.295	.415	Black	1+2	-	36	432
SNS11ASNS	B+C	.295	.415	Black	1+2	-	36	432
SNS11ASTP275	A+C	.295	.415	Black	1+2	.275	36	432
SNS11ASTP450	A+C	.295	.415	Black	1+2	.450	36	432

† Tool: 1 = CST596711, 2 = L3011B



## SNAP-N-SEAL® “F” SERIES MALE INDOOR ONE-PIECE COMPRESSION CONNECTORS

Adapted from our environmentally sealed, indoor/outdoor Snap-N-Seal® line, the Indoor F Series Snap-N-Seal® compression connectors offer the same high shielding effectiveness, low insertion loss and excellent return loss specifications, but with a knurled nut design that is both unique in appearance and makes indoor installation easy for installers and subscribers.

- Large 1/2" diameter knurled “subscriber friendly” nut design provides additional leverage for connections to TVs, VCRs and Set-Top Converters.
- Installation requires one-step 1/4”-1/4” cable preparation and the standard compression tools used for all 59 and 6 series Snap-N-Seal® product families, which saves time and reduces the chance for errors.
- True 360° compression onto cable ensures optimum RF shielding performance, -90 dB effective shielding (typical on a 60% braid cable), without performance degradation experienced by all crimp style products over time.
- Superb return loss performance of -30 dB up to 1GHz.
- Cable retention exceeds 40 lb. minimum as specified by the SCTE.
- Permanently stamped part numbers and color-coded sleeves for easy identification before and after installation.

### PHYSICAL PROPERTIES

- Nut, Post and Collar: Brass
- Nut Finish: Gold (SNS6IG) NiTin (SNS6I)
- Collar Finish: NiTin
- Post Finish: Tin plated
- O-Ring: Ethylene Propylene

### ELECTRICAL PROPERTIES

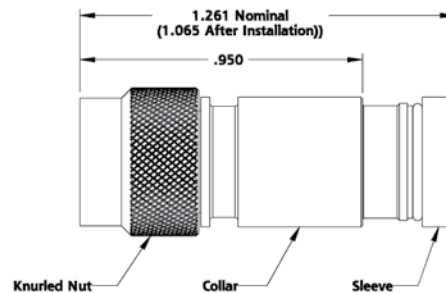
- Return Loss: -30 dB up to 1 GHz typical
- Insertion Loss: -0.18 dB up to 1 GHz typical
- RFI Shielding: -90 dB typical (60% bonded foil cable)

### MECHANICAL PROPERTIES

- Cable Retention: 40 lbs. min. Complies to SCTE IPS-SP-404
- Cable Insertion Force: < 20 lbs.

### ENVIRONMENTAL PROPERTIES

- Temperature Rating: -40° F (-40° C) to 140° F (60° C)



### ORDERING INFORMATION

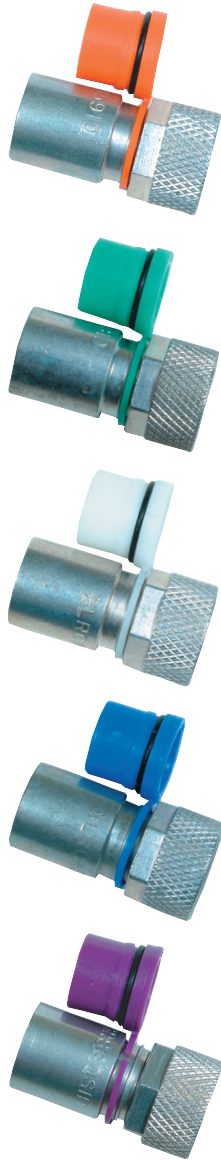
CATALOG NUMBER	POST I.D.	SLEEVE I.D.	TOOL†	SLEEVE COLOR	INNER PACK	OUTER PACK
<b>“F” SERIES MALE INDOOR ONE-PIECE COMPRESSION CONNECTOR</b>						
SNS6I	.191	.290	1+2	Blue	50	1000
SNS6IG	.191	.290	1+2	Blue	50	1000

†TOOL: 1 = CST596 OR CST596711, 2 = SNSUTL

Please ask your Thomas & Betts representative for a complete catalog of quality Thomas & Betts products or visit us at [www.tnb.com](http://www.tnb.com). For customer service, call **1-800-685-9452**. For technical questions, call **1-888-862-3289**.

© 2007 Thomas & Betts Corporation. All rights reserved.

**Thomas & Betts Corporation**  
Communications Products Group  
Tel: 800-920-0328 • 901-252-5000  
Fax: 800-283-6756 • 901-252-1380



# LRC® SNAP-N-SEAL®

## “F” Series Male Indoor Compression Connectors

Adapted from our environmentally sealed, indoor/outdoor LRC® Snap-N-Seal® line, the Indoor F Series Snap-N-Seal® compression connectors offer the same high shielding effectiveness, low insertion loss and excellent return loss specifications, but with a knurled nut to make indoor installation easy for installers and subscribers. Connectors that are not environmentally sealed should not be used outdoors.

### DESIGN ADVANTAGES

- Large 1/2” diameter knurled “subscriber friendly” nut provides additional leverage over standard 7/16” hex nut, ensuring RF tight connections to TVs, VCRs and Set-Top Converters.
- Installer can use a standard 7/16” hex for wrench tight installations.
- Installation requires one-step 1/4”-1/4” cable preparation and the standard compression tools used for all 59 and 6 series Snap-N-Seal® product families, which saves time and reduces the chances for errors.
- True 360° compression onto cable ensures optimum RF shielding performance, -95 dB effective shielding (typical on a 60% braid cable), without performance degradation experienced by all crimp style products over time.
- Superb return loss performance of -30 dB up to 1GHz.
- Cable retention exceeds 40 lb. minimum as specified by the SCTE.
- A clear chromate finish, permanently stamped part numbers and color-coded sleeves make the connector easy to identify before and after installation.
- The indoor Snap-N-Seal® system includes jumper cable assemblies, which are the best choice for digital boxes and cable modems.

### PHYSICAL PROPERTIES

NUT, POST AND COLLAR: BRASS CDA360  
 NUT AND COLLAR FINISH: CADMIUM PLATED WITH CLEAR CHROMATE COATING  
 POST FINISH: TIN PLATED  
 O-RING: ETHYLENE PROPYLENE

### ELECTRICAL PROPERTIES

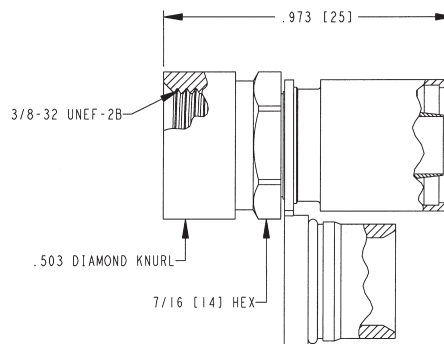
RETURN LOSS: -30 dB UP TO 1 GHz TYPICAL  
 INSERTION LOSS: -0.18 dB UP TO 1 GHz TYPICAL  
 RFI SHIELDING: -95 dB TYPICAL (60% BONDED FOIL CABLE)

### MECHANICAL PROPERTIES

CABLE RETENTION: 40 LBS. MIN. COMPLIES TO SCTE IPS-SP-404  
 CABLE INSERTION FORCE: < 20 LBS.

### ENVIRONMENTAL PROPERTIES

TEMPERATURE RATING: -40° F (-40°C) TO 140° F (60°C)



### Ordering Information

CATALOG NUMBER	POST I.D.	SLEEVE I.D.	TOOL†	SLEEVE COLOR	INNER PACK	OUTER PACK
SNS59ID	.154	.253	1+2	Orange	50	1000
SNS59QSID	.154	.275	1+2	Green	50	1000
SNS59HECID	.154	.290	1+2	White	50	1000
SNS6ID	.191	.290	1+2	Blue	50	1000
SNS6QSID	.191	.315	1+2	Violet	50	1000

## SNAP-N-SEAL® RCA TYPE MALE COMPRESSION CONNECTORS

Extending the use of our Snap-N-Seal® technology, Thomas & Betts introduces the Snap-N-Seal® RCA connector. Designed to interface with all standard RCA female jacks and utilizing standard or tri-shield SCTE specification 6 series drop cable, this product gives the installer maximum flexibility for creating and placing audio cables in home entertainment systems.



### PHYSICAL PROPERTIES

- Body Components: Brass
- Body Finish: NiTin
- Terminal/contact: Brass Beryllium Copper
- Insulators: TPX

### ELECTRICAL PROPERTIES

- Return Loss: -30 dB up to 20 MHz Typical
- Insertion Loss: -0.05 dB up to 20 MHz Typical
- RFI Shielding: -120 dB up to 20 MHz Typical

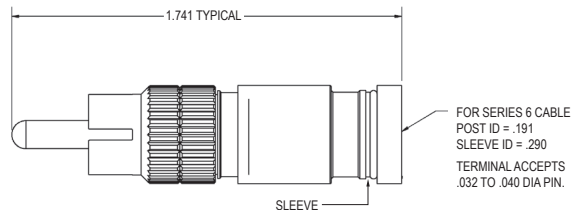
### MECHANICAL PROPERTIES

- Cable Retention : 40 lbs min. Complies to SCTE IPS-SP-404
- Cable Insertion Force: <20 lbs

### ENVIRONMENTAL PROPERTIES

- Temperature Rating: -40°F (-40°C) to 140°F (60°C)

- Features Snap-N-Seal® technology for simple and reliable installations.
- Designed to interface with RCA female (JACK) per IEC Specification 60603-14.
- Cadmium plated connector body and precision integral contact provide maximum reliability.
- Installation requires one-step 1/4"-1/4" cable preparation and standard compression tools used for all 59 and 6 series Snap-N-Seal® product families.
- Color coded sleeves based on industry standards for RCA connector applications.



### ORDERING INFORMATION

CATALOG NUMBER	SLEEVE COLOR	TOOL†	INNER PACK	OUTER PACK
<b>RCA-TYPE MALE COMPRESSION CONNECTORS</b>				
SNS1P6RMBL	Blue	1+2	36	432
SNS1P6RMY	Yellow	1+2	36	432
SNS1P6RMW	White	1+2	36	432
SNS1P6RMR	Red	1+2	36	432
SNS1P6RMG	Green	1+2	36	432
SNS1P6RMBK	Black	1+2	36	432

†Tool: 1 = CST596 or CST596711 2 = SNSUTL

Please ask your Thomas & Betts representative for a complete catalog of quality Thomas & Betts products or visit us at [www.tnb.com](http://www.tnb.com). For customer service, call **1-800-685-9452**. For technical questions, call **1-888-862-3289**.

**Thomas & Betts Corporation**  
Communications Products Group  
Tel: 800-920-0328 • 901-252-5000  
Fax: 800-283-6756 • 901-252-1380

© 2007 Thomas & Betts Corporation. All rights reserved.

DATA SHEET # CDS-SNSRCAS



## SNAP-N-SEAL® ONE-PIECE BNC COMPRESSION CONNECTORS

These connectors are designed for applications using Series 59, Series 59 Quad Shield, Series 6 and Series 6 Quad Shield SCTE specification coaxial cables. In addition the 59 Series BNC connectors are designed for applications using specific Broadband Headend cables and Digital Video cables.

- High performance, 75 ohm Snap-N-Seal® BNC Male connectors feature precision coaxial contacts for demanding bandwidth applications.
- True 360 degree compression onto cable ensures optimum RF shielding performance, -65dB effective shielding.
- BNC Male Plug interface is designed to nominal Mil Spec C-39012 with 75 ohm characteristic impedance.
- Integral silver-plated contact and Snap-N-Seal® design ensures ease of installation and reliable, high frequency return loss performance of -30dB to 1 GHz.
- Installation requires one-step 1/4" - 1/4" cable preparation and standard compression tools used for all 59 & 6 series Snap-N-Seal® product families, saving installation time.



### PHYSICAL PROPERTIES

- Body Components: Brass
- Body Finish: Nickel
- Nut: Zinc alloy with Nickel plate
- Terminal/Contact: Beryllium Copper with Silver plate
- Insulators: TPX
- O-Rings: Ethylene propylene

### ELECTRICAL PROPERTIES

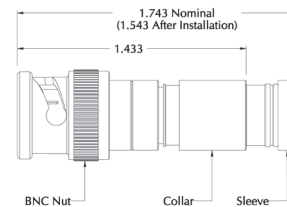
- Return Loss: -30 dB up to 1 GHz typical
- Insertion Loss: -0.2 dB up to 1 GHz typical
- RFI Shielding: -65 dB typical

### MECHANICAL PROPERTIES

- Cable Retention: 40 lbs min. complies to SCTE IPS-SP-404
- Cable Insertion Force: <20 lbs

### ENVIRONMENTAL PROPERTIES

- Temperature Rating: -40°F (-40°C) to 140°F (60°C)



### ORDERING INFORMATION

CATALOG #	CABLE TYPES	CENTER COND DIA RANGE	POST I.D.	SLEEVE I.D.	SLEEVE COLOR	TOOL†	INNER PACK	OUTER PACK
<b>BNC COMPRESSION CONNECTORS</b>								
SNS1P59BNC	RG59 Belden 1505A Serial Digital Video Cable Belden 9167 Broadband Headend Cable Belden 9275 Belden 8241	.022 to .036	.154	.253	Orange	1+2	10	50
SNS1P59QSBNC	RG59QS	.022 to .042	.154	.275	Green	1+2	10	50
SNS1P6BNC	RG6	.032 to .040	.191	.290	Blue	1+2	10	50
SNS1P6QSBNC	RG6QS	.032 to .040	.191	.315	Violet	1+2	10	50
SNS1P6UBNC	Fits most RG6 and RG6QS coaxial cables	.032 to .040	.191	.293	Red	1+2	10	50
SNS1P59HECBNC	Commscope F59 HEC-2 Times Fiber 02240V Times Fiber 02241V Commscope S59 HEC	.022 to .036	.154	.290	White	1+2	10	50

†TOOL: 1 = SNSUTL, 2 = CST596711 OR CST596

Please ask your Thomas & Betts representative for a complete catalog of quality Thomas & Betts products or visit us at [www.tnb.com](http://www.tnb.com). For customer service, call **1-800-685-9452**. For technical questions, call **1-888-862-3289**.

© 2007 Thomas & Betts Corporation. All rights reserved.

DATA SHEET # CDS-SNS1PBNC

**Thomas & Betts Corporation**  
Communications Products Group  
Tel: 800-920-0328 • 901-252-5000  
Fax: 800-283-6756 • 901-252-1380

# Snap-N-Seal One Piece BNC Connector to Cable Cross Reference



Cable Manufacturer	Cable Name/Number	SNS1P59BNC	SNS1P59QSBNC	SNS1P6BNC	SNS1P6QSBNC	SNS1P6UBNC
Belden	1505A Serial Digital Video Cable	Y				
Belden	8241	Y				
Belden	9167 Broadband Headend Cable	Y				
Belden	9275	Y				
Commscope	F59 HEC-2					
Commscope	S59 HEC					
Genesis	5001	Y				
Genesis	5002			Y		
Genesis	5003			Y		
Genesis	5006	Y				
Genesis	5007				Y	
Genesis	5013	Y				
Genesis	5302			Y		
Times Fiber	02240V					
Times Fiber	02241V					

**Note: For Cable TV Market Applications**

SCTE specification Series 59 coaxial cables	Y				
SCTE specification Series 59 quad shield coaxial cables		Y			
SCTE specification Series 6 coaxial cables			Y		Y
SCTE specification Series 6 quad shield coaxial cables				Y	Y
SCTE specification Series 59 headend coaxial cables					



## SNAP-N-SEAL® BNC, RCA & F MALE COMPRESSION CONNECTORS FOR HDTV AND PRECISION VIDEO CABLE

Extending the use of our Snap-N-Seal® technology, Thomas & Betts introduces BNC, RCA and F Male compression connectors designed for use in Headend and jumper applications on HDTV and precision video cables.

With space at a premium and the exacting demands of digital television, using a Snap-N-Seal connector in conjunction with precision HDTV cable will help with your wire management needs.

### PROPERTIES BNC

- Body: Nickel plated Brass
- BNC Nut: Nickel plated Zinc Alloy
- Terminal Contact: Silver plated Beryllium Copper
- Insulators: TPX
- Return Loss: -30 dB up to 1 GHz typical
- Insertion Loss: -0.3 dB up to 1 GHz typical
- RFI Shielding: -60 dB typical (60% + bonded foil)

### RCA

- Body: NiTin plated Brass
- RCA Interface: Decorative Gold plated Brass
- Terminal Contact: Silver plated Beryllium Copper
- Insulators: TPX
- Return Loss: -30 dB up to 20 MHz typical
- Insertion Loss: -0.3 dB up to 20 MHz typical
- RFI Shielding: -65 dB typical (60% + bonded foil)

### F MALE

- Nut & Collar: NiTin plated Brass
- Return Loss: -30 dB up to 1 GHz typical
- Insertion Loss: -0.3 dB up to 1 GHz typical
- RFI Shielding: -80 dB typical (60% + bonded foil)

### PROPERTIES (TYPICAL TO BNC, RCA & F MALE)

- Post: Tin plated Brass
- Cable Insertion Force: 20 lbs. maximum
- Cable Retention Force: 40 lbs. minimum
- Temperature Rating: -40°F(-40°C) to 140°F(60°C)

- Simple, quick installation using the standard SNSUTL Snap-N-Seal installation tool and CSTMV596 cable stripping tool
- Nearly 2 decades of proven compression connector experience incorporated in a design for use in HDTV and headend applications
- True 360 degree compression onto cable ensures superior RF shielding performance
- To reduce assembly time and simplify installation, the plastic sleeve is pre-positioned and detachably coupled to the connector body
- The BNC male plug interface is designed to nominal Mil Spec C-39012 with 75 ohm characteristic impedance
- The RCA type connector is designed to interface with standard RCA-type female jacks
- Connectors fit SCTE specification mini cables for standard braid

**Application:** Cables meeting SCTE Specification IPS SP 009 for single braid, tri-shield or quad-shield flexible 75 ohm mini series cable, or equivalent.

### ORDERING INFORMATION

CATALOG NUMBER	CONNECTOR TYPE	SLEEVE COLOR	INSTALL TOOL	CABLE PREPARATION TOOL	INNER PACK	OUTER PACK
<b>SNAP-N-SEAL® BNC, RCA &amp; F MALE COMPRESSION CONNECTORS FOR HDTV AND PRECISION VIDEO CABLE</b>						
SNSBNCMB	BNC	Black	SNSUTL	1, 2 or 3	50	500
SNSRMB	RCA	Black	SNSUTL	1, 2 or 3	50	500
SNSFMB	F Male	Black	SNSUTL	1, 2 or 3	50	500
SNSBNCMTQ	BNC	White	SNSUTL	1, 2 or 3	50	500
SNSRMTQ	RCA	White	SNSUTL	1, 2 or 3	50	500
SNSFMTQ	F Male	White	SNSUTL	1, 2 or 3	50	500

1 Tool: 1=CSTMV596 2=CST596711MV 3=CST596596MV

Please ask your Thomas & Betts representative for a complete catalog of quality Thomas & Betts products or visit us at [www.tnb.com](http://www.tnb.com). For customer service, call **1-800-685-9452**. For technical questions, call **1-888-862-3289**.

**Thomas & Betts Corporation**  
Communications Products Group  
Tel: 800-920-0328 • 901-252-5000  
Fax: 800-283-6756 • 901-252-1380

© 2008 Thomas & Betts Corporation. All rights reserved.

DATA SHEET # CDS-SNSMINIFAM

## SNAP-N-SEAL® ENVIRONMENTALLY SEALED SPLICE CONNECTORS



With its integral center contact, the Thomas & Betts Snap-N-Seal® Splice Connector ensures reliable, high frequency return loss performance for midspan and direct burial drop splices.

Snap-N-Seal® Splice Connectors use the same proven 360° compression design, installation tools and procedures as other Snap-N-Seal® products.

- To reduce assembly time and simplify installation, the plastic sleeve is pre-positioned and detachably coupled to the connector body
- True 360° compression onto cable ensures superior RF shielding performance, -90 dB effective shielding (typical on 60% bonded foil cable)
- Installation requires one-step 1/4" - 1/4" cable preparation and standard compression tools used for all 59 & 6 Series Snap-N-Seal® product families
- Quad-sealed system prevents moisture migration
- Six-point seal system prevents moisture migration
- Incorporates a NiTin finish plus UV resistant plastic and O-Rings to provide a reliable, environmentally sealed product
- Cable retention exceeds 40 lb. minimum as specified by the SCTE
- For direct burial applications, recommend Shrink-Kon® heat shrink tubing #HS12-6L or Kold-N-Klose® sleeve material #TBT2010



### PHYSICAL PROPERTIES

- Body: NiTin plated Brass
- Post: Tin plated Brass
- Terminal Contact: Tin plated Copper Alloy
- Insulators: Polypropylene
- O-Rings: Ethylene Propylene

### ELECTRICAL PROPERTIES

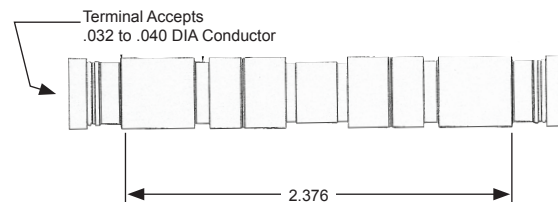
- Return Loss: -12 dB up to 1 GHz typical
- Insertion Loss: -0.18 dB up to 1 GHz typical
- RFI Shielding: -90 dB typical (60% + bonded foil)

### MECHANICAL PROPERTIES

- Cable Insertion Force: 20 lbs. maximum
- Cable Retention Force: 40 lbs. minimum per SCTE IPS-SP-401

### ENVIRONMENTAL PROPERTIES

- Temperature Rating -40°F(-40°C) to 140°F(60°C)
- Salt Fog: Passes 1000 hours ASTM B 117
- Moisture Migration: Passes ANSI/SCTE 60 2004



### ORDERING INFORMATION

CATALOG NUMBER	POST I.D.	SLEEVE I.D.	SLEEVE COLOR	TOOL†	INNER PACK	OUTER PACK
<b>ENVIRONMENTALLY SEALED SPLICE CONNECTORS</b>						
81SNS1P59	.154	.257	Orange	1+2	20	240
81SNS1P59QS	.154	.275	Green	1+2	20	240
81SNS1P6U	.191	.293	Red	1+2	20	240
81SNS1P6	.191	.290	Blue	1+2	20	240
81SNS1P6QS	.191	.315	Violet	1+2	20	240

†TOOL: 1 = CST596 OR CST596711, 2 = SNSUTL

Please ask your Thomas & Betts representative for a complete catalog of quality Thomas & Betts products or visit us at [www.tnb.com](http://www.tnb.com). For customer service, call **1-800-685-9452**. For technical questions, call **1-888-862-3289**.

**Thomas & Betts Corporation**  
Communications Products Group  
Tel: 800-920-0328 • 901-252-5000  
Fax: 800-283-6756 • 901-252-1380

© 2007 Thomas & Betts Corporation. All rights reserved.

**DATA SHEET # CDS-SNSSPLICE**

**Snap-N-Seal®**  
**Environmentally Sealed**  
**Precision-Splice Connectors**



Snap-N-Seal® Precision Splice Connectors use the same proven 360° compression design, installation tools and procedures as other Snap-N-Seal® products. With its precision integral center contact, the Snap-N-Seal® Precision Splice Connector ensures reliable, high frequency return loss performance for midspan and direct burial drop splices.

**DESIGN ADVANTAGES**

- Precision coaxial contact provides superior signal performance.
- Standard one-step 1/4" - 1/4" cable preparation.
- True 360° compression for superior RF Shielding performance.
- Superb return loss performance of -30 dB up to 1GHz.
- Cable retention exceeds 40 lb. minimum as specified by the SCTE.
- Permanently stamped part numbers and color coded O-rings for easy identification.
- Moisture prevention, not just protection.

**PROPERTIES**

**PHYSICAL**

BODY, POST AND COLLAR: BRASS CDA360  
 BODY AND COLLAR FINISH: CADMIUM PLATED WITH  
 IRIDESCENT CHROMATE COATING  
 POST FINISH: TIN PLATED  
 O-RING: ETHYLENE PROPYLENE

**ELECTRICAL**

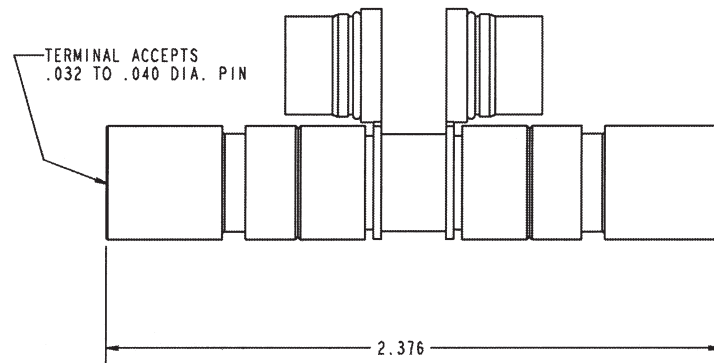
RETURN LOSS: -30 dB UP TO 1 GHz TYPICAL  
 INSERTION LOSS: -0.27 dB UP TO 1 GHz TYPICAL  
 RFI SHIELDING: -95 dB TYPICAL (60% BONDED FOIL  
 CABLE)

**MECHANICAL**

CABLE RETENTION: 40 LBS. MIN. COMPLIES TO SCTE  
 IPS-SP-404  
 CABLE INSERTION FORCE: <20 LBS.

**ENVIRONMENTAL**

TEMPERATURE RATING: -40° F (-40°C) TO 140° F  
 (60°C)

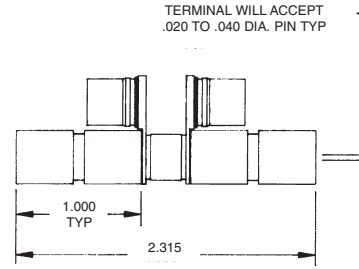


**Ordering Information**

CATALOG NUMBER	POST I.D.	SLEEVE I.D.	SLEEVE COLOR	TOOL†	INNER PACK	OUTER PACK
81SNS59K	.154	.253	Orange	1+2	20	240
81SNS59QSK	.154	.275	Green	1+2	20	240
81SNS6K	.191	.290	Blue	1+2	20	240
81SNS6QSK	.191	.315	Violet	1+2	20	240

†TOOL: 1 = CST596 OR CST596711, 2 = SNSUTL

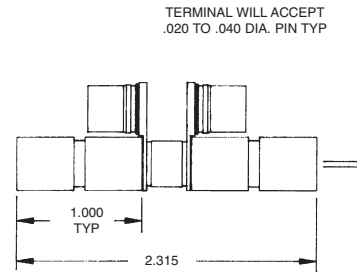
Snap-N-Seal®  
Splice



Ordering Information

CATALOG NUMBER	RETURN LOSS	INSERTION LOSS	RFI	POST I.D.	SLEEVE I.D.	SLEEVE COLOR	TOOL†	INNER PACK	OUTER PACK
81SNS59	-13.5dB	-.7dB	-95dB	.154	.253	Orange	1+2	20	240
81SNS59QS	-13.5dB	-.7dB	-95dB	.154	.275	Green	1+2	20	240
81SNS6	-13.5dB	-.7dB	-95dB	.191	.290	Blue	1+2	20	240
81SNS6QS	-13.5dB	-.7dB	-95dB	.191	.315	Violet	1+2	20	240

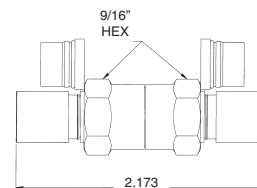
Snap-N-Seal®  
Splice, Delta



Ordering Information

CATALOG NUMBER	RETURN LOSS	INSERTION LOSS	RFI	POST I.D.	SLEEVE I.D.	SLEEVE CODE	TOOL†	INNER PACK	OUTER PACK
81SNS5959QS	-13.5dB	-.7dB	-95dB	.154	.253 (59)/.275 (59QS)	Orange(59)/Green(59QS)	1+2	20	240
81SNS596QS	-13.5dB	-.7dB	-95dB	.154(59)/.191(6QS)	.253(59)/.315(6QS)	Orange(59)/Violet(6QS)	1+2	20	240
81SNS659	-13.5dB	-.7dB	-95dB	.191(6)/0.154(59)	.290(6)/.253(59)	Blue(6)/Orange(59)	1+2	20	240
81SNS659QS	-13.5dB	-.7dB	-95dB	.191(6)/.154(59QS)	.290(6)/.275(59QS)	Blue(6)/Green(59QS)	1+2	20	240
81SNS66QS	-13.5dB	-.7dB	-95dB	.191	.290(6)/.315(6QS)	Blue(6)/Violet(6QS)	1+2	20	240
81SNS6QS59QS	-13.5dB	-.7dB	-95dB	0.191(6QS)/0.154(59QS)	0.315(6QS)/0.275(59QS)	Violet(6QS)/Green(59QS)	1+2	20	240

Snap-N-Seal®  
Splice, Auto Seize



Ordering Information

CATALOG NUMBER	RETURN LOSS	INSERTION LOSS	RFI	POST I.D.	SLEEVE I.D.	SLEEVE COLOR	TOOL†	INNER PACK	OUTER PACK
SNS8159AS	-13.5dB	-.7dB	-95dB	.154	.253	Orange	1+2	20	240
SNS816AS	-13.5dB	-.7dB	-95dB	.191	.290	Blue	1+2	20	240

†Tool: 1 = CST596 or CST596711, 2 = SNSUTL

**Snap-N-Seal® Precision Ground Block**



**PROPERTIES**

**PHYSICAL**

CONNECTOR POST AND COLLAR: BRASS CDA360  
 CONNECTOR BODY AND COLLAR FINISH: CADMIUM PLATED WITH IRIDESCENT CHROMATE COATING  
 CONNECTOR POST FINISH: TIN PLATED  
 CONNECTOR O-RING: ETHYLENE PROPYLENE  
 GROUNDING BLOCK: ALUMINUM WITH CLEAR CHROMATE COATING  
 GROUND SCREW: STEEL, ZINC PLATED WITH GREEN CHROMATE COATING PER NEC  
 MOUNTING SCREWS(2): STAINLESS STEEL

**ELECTRICAL**

RETURN LOSS: -30 dB UP TO 1 GHz TYPICAL  
 INSERTION LOSS: -0.27 dB UP TO 1 GHz TYPICAL  
 RFI SHIELDING: -85 dB TYPICAL (60% BONDED FOIL CABLE)

**MECHANICAL**

CABLE RETENTION: 40 LBS. MIN. COMPLIES TO SCTE IPS-SP-404  
 CABLE INSERTION FORCE: <20 LBS.

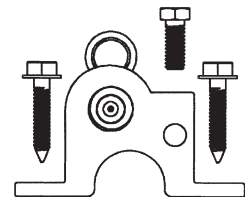
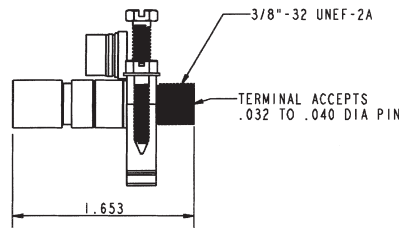
**ENVIRONMENTAL**

TEMPERATURE RATING: -40° F (-40°C) TO 140° F (60°C)

Snap-N-Seal® Precision Ground Blocks use the same proven 360° compression design, installation tools and procedures as other Snap-N-Seal® products. With its precision integral center contact, the Snap-N-Seal® Precision Ground Block ensures reliable, high frequency return loss performance for ground block and MDU grounding applications.

**DESIGN ADVANTAGES**

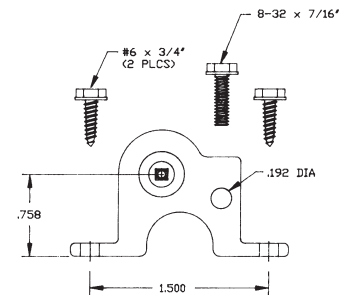
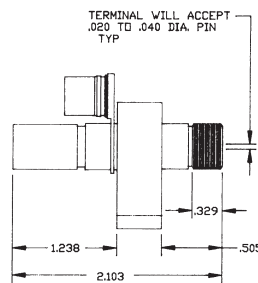
- Precision coaxial contact provides superior signal transmission.
- Standard one-step 1/4" - 1/4" cable preparation.
- True 360° compression for optimum performance.
- Superb return loss performance of -30 dB to 1GHz.
- Cable retention exceeds 40 lb. minimum as specified by the SCTE.
- Permanently stamped part numbers and color coded sleeves for easy identification before and after installation.
- Will accept up to 6 gauge ground wire.



**Ordering Information**

CATALOG NUMBER	POST I.D.	SLEEVE I.D.	SLEEVE COLOR	TOOL†	INNER PACK	OUTER PACK
GB59SNSK	.154	.253	Orange	1+2	25	300
GB59QSNSK	.154	.275	Green	1+2	25	300
GB6SNSK	.191	.290	Blue	1+2	25	300
GB6QSNSK	.191	.315	Violet	1+2	25	300

**Snap-N-Seal® Ground Block**



**Ordering Information**

CATALOG NUMBER	RETURN LOSS	INSERTION LOSS	RFI*	POST I.D.	SLEEVE I.D.	SLEEVE COLOR	TOOL†	INNER PACK	OUTER PACK
GB59SNS	-13.5dB	-7dB	-95dB	.154	.253	Orange	1+2	25	350
GB59QSNS	-13.5dB	-7dB	-95dB	.154	.275	Green	1+2	25	350
GB6SNS	-13.5dB	-7dB	-95dB	.191	.290	Blue	1+2	25	350
GB6QSNS	-13.5dB	-7dB	-95dB	.191	.315	Violet	1+2	25	350

†TOOL: 1 = CST596 OR CST596711, 2 = SNSUTL

ALL SUPPLIED SCREWS HAVE SLOTTED - 1/4" HEX COMBINATION HEAD

\*RFI SHIELDING - USING 60% BRAID CABLE.

**Snap-N-Seal® Headend,  
Cable to "F" Female  
Precision Connector**



**PROPERTIES**

**PHYSICAL**

POST, COLLAR, AND BODY: BRASS CDA360  
 COLLAR, AND BODY FINISH: CADMIUM WITH IRIDESCENT  
 CHROMATE COATING  
 POST FINISH: TIN PLATED  
 SLEEVE: DELRIN  
 O-RINGS: ETHYLENE PROPYLENE  
 INSULATORS: TPX  
 CONTACTS: BERYLLIUM COPPER WITH SILVER PLATE

**ELECTRICAL**

RETURN LOSS: -30 dB UP TO 1 GHz TYPICAL  
 INSERTION LOSS: -0.3 dB UP TO 1 GHz TYPICAL  
 RFI SHIELDING: -95 dB TYPICAL

**MECHANICAL**

CABLE RETENTION: 40 LBS. MIN. COMPLIES TO SCTE  
 IPS-SP-404  
 CABLE INSERTION FORCE: <20 LBS.

**ENVIRONMENTAL**

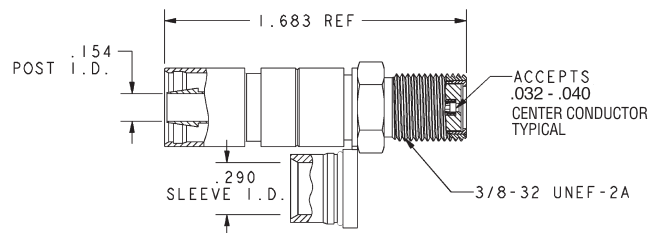
TEMPERATURE RATING: -40°F (-40°C) TO 140°F  
 (60°C)

The Snap-N-Seal® headend, cable to "F" female precision connector is designed for use in space-limited applications such as Headend Video Combiners. It is a single connector, thus eliminating the need for separate "F" male and panel mount "F" splice connectors.

Specifically designed for applications using CommScope® series F59HEC-2 Headend Cable or Times Fiber Communications, Inc. 02240V and 02241V Headend Cables.

**DESIGN ADVANTAGES**

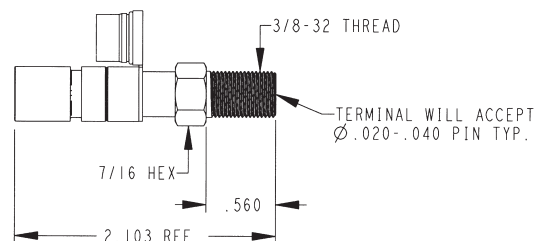
- Incorporates silver plated precision center contact providing high frequency performance.
- Superb Return Loss performance of -30dB up to 1 GHz.
- Extended panel mount thread length of .458" allows for thick panel mounting.
- Installation requires one-step 1/4" - 1/4" cable preparation and standard compression tools used for all 59 & 6 series Snap-N-Seal® product families, saving installation time.
- Optional panel mounting hardware includes Lock Washer 6155LW or Flat Washer 6155 plus 1/2" Hex Panel Nut 6150.



**Ordering Information**

CATALOG NUMBER	POST I.D.	SLEEVE I.D.	SLEEVE COLOR	TOOL†	DIM A	DIM B	INNER PACK	OUTER PACK
SNS6KF81	.191	.290	Blue	1 + 2	.379	1.554	36	432
SNS59HECKF81	.154	.290	White	1+2	.458	1.683	20	240

**Snap-N-Seal®  
Cable to "F"  
Female Connector**



**Ordering Information**

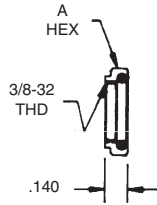
CATALOG NUMBER	RETURN LOSS	INSERTION LOSS	RFI*	POST I.D.	SLEEVE I.D.	SLEEVE COLOR	TOOL†	INNER PACK	OUTER PACK
SNS59FF	-13.5dB	-7dB	-95dB	.154	.253	Orange	1+2	20	240
SNS59QSFF	-13.5dB	-7dB	-95dB	.154	.275	Green	1+2	20	240
SNS6FF	-13.5dB	-7dB	-95dB	.191	.290	Blue	1+2	50	1000
SNS6QSFF	-13.5dB	-7dB	-95dB	.191	.315	Violet	1+2	20	240

†TOOL: 1 = CST596 OR CST596711, 2 = SNSUTL

\*RFI SHIELDING - USING 60% BRAID CABLE.



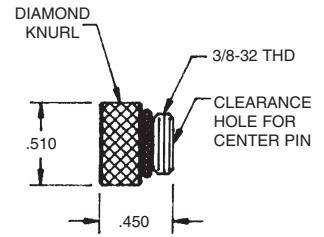
**Snap-N-Seal®  
Accessories**



**FIG. A**



**FIG. B**

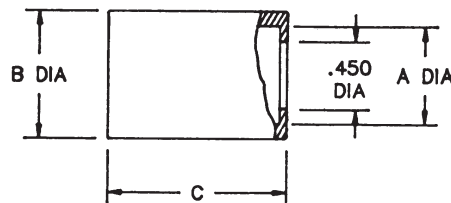


**FIG. C**

**Ordering Information**

CATALOG NUMBER	FIG.	DESCRIPTION	USE	DIM A	INNER PACK	OUTER PACK
NS500	A	Nut Seal	All 59 & 6 Connectors	1/2	50	15000
NS625	A	Nut Seal	All 7 & 11 Connectors	5/8	36	5400
TP275	B	Thread Protector	3/8 Threaded Ports	.275	50	2500
TP450	B	Thread Protector	3/8 Threaded Ports	.450	50	2500
SNS375P	C	Weather Plug	All "F" Male Connectors	-	50	2000

**Snap-N-Seal®  
Security Shield**



**Ordering Information**

CATALOG NUMBER	MATERIAL	TOOL	DIMENSION			INNER PACK	OUTER PACK
			A	B	C		
FCSSNS	Plastic	SSTSNS	.658	.858	1.230	50	800
FCSSNS11	Plastic	SSTSNS11	.803	.995	1.766	25	400



TP275



TP450

## THREAD PROTECTORS

Thomas & Betts thread protectors provide an environmental weather seal for all “F” male connectors in outdoor applications. Thread protectors provide a superior moisture and RF seal for a quality connection to any “F” port.

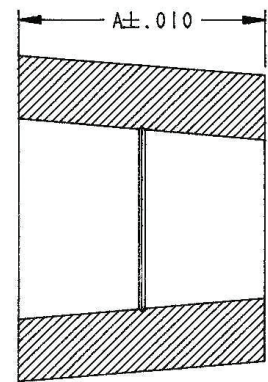
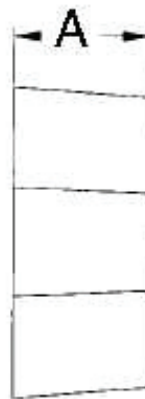
- Prevents moisture migration from damaging the connector interface
- UV and Ozone resistant for a reliable environmental seal
- No tools required for installation
- Passes Bellcore GR-1503-CORE, Chemical Resistance for Outdoor Connectors

### PHYSICAL PROPERTIES

- Material: Advanced Polyvinyl Chloride Polymer

### MECHANICAL PROPERTIES

- Brittleness Point: -125° F (-87° C)
- Tensile Strength: 1,170 psi
- Chemical Test: Bellcore GR-1503-CORE
- Moisture Migration: Passes SCTE IPS-TP-013 (double ended test)



### ORDERING INFORMATION

CATALOG #	DESCRIPTION	DIM A (INCHES)	INNER PACK	OUTER PACK
<b>THREAD PROTECTORS</b>				
TP275	Thread Protector - short “F” ports	.275	50/bag	2500
TP450	Thread Protector - long “F” ports	.450	50/bag	2500

Please ask your Thomas & Betts representative for a complete catalog of quality Thomas & Betts products or visit us at [www.tnb.com](http://www.tnb.com). For customer service, call **1-800-685-9452**. For technical questions, call **1-888-862-3289**.

© 2006 Thomas & Betts Corporation. All rights reserved.

**Thomas & Betts Corporation**  
 Communications Products Group  
 Tel: 800-920-0328 • 901-252-5000  
 Fax: 800-283-6756 • 901-252-1389

## SNAP-N-SEAL® “F” CONNECTOR FOR COMMScope QR® 320



Thomas & Betts Snap-N-Seal® QR320 connector is designed for SDU/MDU applications and can be installed on either flooded or non-flooded QR 320 cables. This connector features a non-metallic post, which reduces craft sensitivity of the cable to connector interface.

- Featuring Snap-N-Seal® technology for consistent, reliable connections
- Integral precision Auto Seize® technology enables good contact with the center conductor
- True 360° compression onto cable ensures superior environmental seal
- Cable preparation requires the use of cable coring tools (7/16" center conductor exposure, 3/8" aluminum sheath exposure, 9/16" core)
- Easy and quick to install with standard compression tools used for Snap-N-Seal 7 & 11 Series product families
- Quad sealed system prevents moisture migration

### PHYSICAL PROPERTIES

- Body: Brass
- Body Finish: Nickel-Tin
- Terminal Contact: Brass with Tin Plate

### ELECTRICAL PROPERTIES

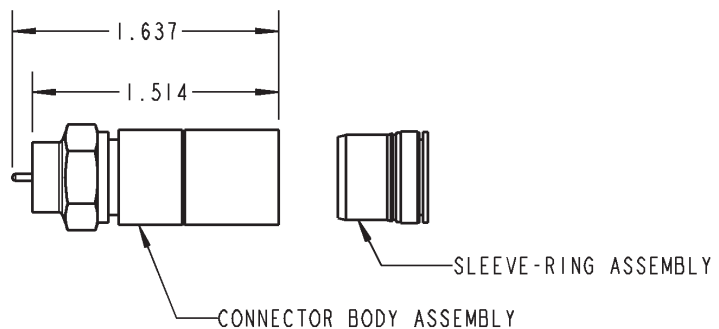
- Insulation Resistance: >5000 mega-ohms @ 100 VDC
- Dielectric Strength: Complies to Bellcore GR-2846-Core, Generic Requirements for Coaxial Distribution Connectors (1Kv RMS for 1 minute)
- Return Loss: -30dB Typical
- Insertion Loss: -.3 dB Typical
- RFI Shielding: -92dB Typical

### MECHANICAL PROPERTIES

- Cable Retention: >100 LBS

### ENVIRONMENTAL PROPERTIES

- Temperature Rating: -40° F (-40° C) to 140° F (60° C)
- Salt Fog: Passes 1000 hours ASTM B 117
- Moisture Migration: Passes ANSI/SCTE 60 2004



### ORDERING INFORMATION

CATALOG NUMBER	DESCRIPTION	TOOLS†	INNER PACK	OUTER PACK
<b>“F” CONNECTOR FOR COMMScope QR® 320</b>				
SNS320QR	Snap-N-Seal® for CommScope QR® 320 Flooded and Non Flooded Cable	1 + 2	36	288

†Tool: 1 = CSTSNS320 2 = L3011B

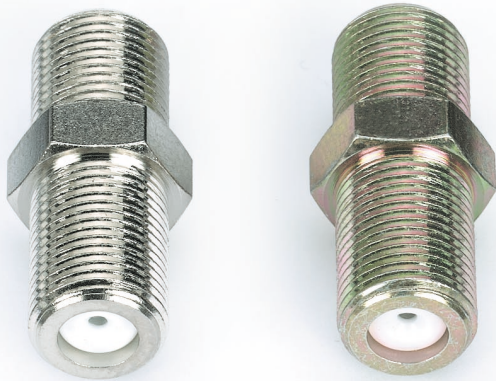
QR is a registered trademark of CommScope Inc.

Please ask your Thomas & Betts representative for a complete catalog of quality Thomas & Betts products or visit us at [www.tnb.com](http://www.tnb.com). For customer service, call **1-800-685-9452**. For technical questions, call **1-888-862-3289**.

**Thomas & Betts Corporation**  
Communications Products Group  
Tel: 800-920-0328 • 901-252-5000  
Fax: 800-283-6756 • 901-252-1380

© 2007 Thomas & Betts Corporation. All rights reserved.

*DATA SHEET # CDS-SNS320QR*



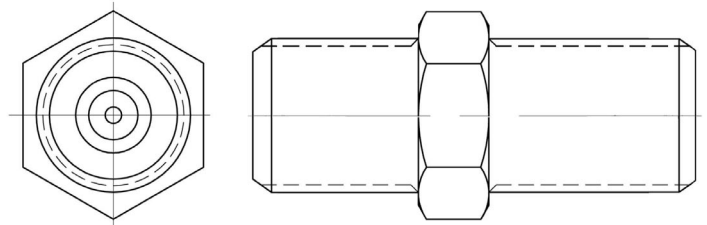
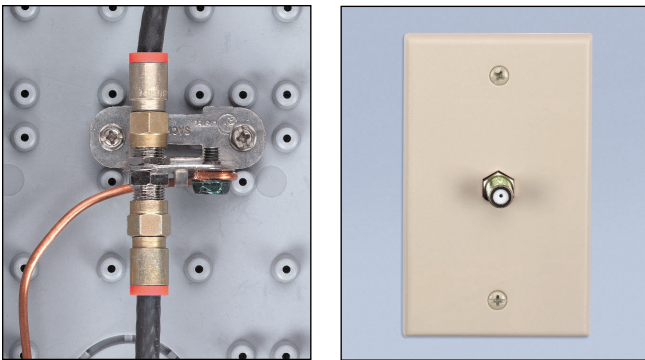
## LRC®

### Precision F81 Connectors

Thomas & Betts LRC precision F81 connectors are high performance splice connectors designed for the demands of today's broadband networks. These connectors provide increased return loss performance up to 4 GHz and have a large, captive pin contact area for greater reliability.

#### DESIGN FEATURES

- Operate over a wide variety of frequencies (DC to 3 GHz)
- High return loss – meets requirements for DBS (Direct Broadcast Satellite) and exceeds SCTE minimum specification
- Flat port ends on both sides per SCTE specifications for flatness and aperture
- Multi-point seizing pin enables lower contact resistance and higher current handling capability
- Beryllium copper seizing pin insures a greater holding force and maintains a higher spring tension over repetitive insertions
- Accepts a wide range of cable center conductor sizes



#### TECHNICAL SPECIFICATION

##### PHYSICAL PROPERTIES

BODY COMPONENTS: BRASS  
 BODY FINISH: NICKEL  
 SEIZING PIN: BERYLLIUM COPPER

##### ELECTRICAL PROPERTIES

FREQUENCY RANGE: DC-3 GHz  
 RETURN LOSS: >35 dB (1 GHz)  
                   >30 dB (2 GHz)  
                   >26 dB (3 GHz)  
 INSERTION LOSS: <0.1 dB (1 GHz)  
                       <0.2 dB (2 GHz)  
                       <0.3 dB (3 GHz)  
 CONTACT RESISTANCE: <10 MILLI-OHMS

##### MECHANICAL PROPERTIES

HOLDING FORCE: >180 GRAMS (INITIAL)  
                       >120 GRAMS\*  
 THREADS: 3/8-32 UNEF  
 MAX TIGHTENING: 50 IN-LBS

\*AFTER 50 INSERTIONS OF RG6

#### ORDERING INFORMATION

CATALOG NUMBER	CONNECTOR TYPE	INNER PACK	OUTER PACK
KF81D	Precision F81	100	2000
KF81DI	Precision F81 with Iridescent Coating	100	2000



## LRC® ONE-PIECE ATTENUATOR PADS

Thomas & Betts one-piece LRC® in-line Attenuator Pads are designed for applications including RF attenuation for Set Top Boxes and VoIP/Cable Modems. These attenuators reduce RF signal strength, which in turn reduces RF signal overload and intermodulation caused by high input levels.

- Attenuation flatness within  $\pm 0.5$  dB from 5 MHz to 1 GHz (20 dB Attenuation  $\pm 0.7$  dB)
- Cadmium Chromate plated Brass Body and Silver plated Beryllium Copper Seizing contact (Seizing Contact retention 20 grams minimum)

### PHYSICAL PROPERTIES

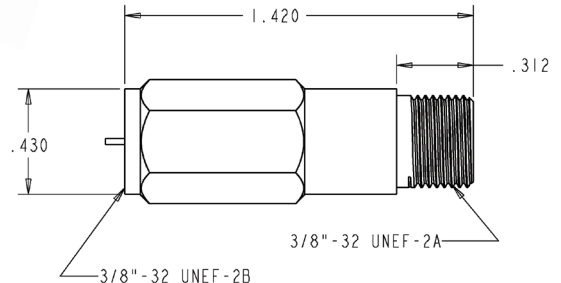
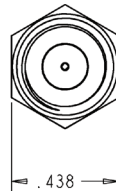
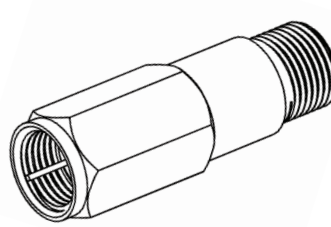
- Body Components: Brass
- Body Finish: Iridescent Chromate over Cadmium
- Seizing Pin: Phosphorus Bronze with Silver Plating
- Pin Finish: Beryllium Copper with Silver Plating

### ELECTRICAL PROPERTIES

- Attenuation:  
AP1FM - 1 dB  $\pm .5$  dB  
AP3FM - 3 dB  $\pm .5$  dB  
AP6FM - 6 dB  $\pm .5$  dB  
AP8FM - 8 dB  $\pm .5$  dB  
AP10FM - 10 dB  $\pm .5$  dB  
AP20FM - 20 dB  $\pm .7$  dB

### MECHANICAL PROPERTIES

- Retention Force of Female Contact: 20 grams minimum



### ORDERING INFORMATION

CATALOG #	CONNECTOR TYPE	INNER PACK	OUTER PACK
<b>LRC® ONE-PIECE ATTENUATOR PADS</b>			
AP1FM	One-Piece Attenuator Pad 1 dB	24/box	288
AP3FM	One-Piece Attenuator Pad 3 dB	24/box	288
AP6FM	One-Piece Attenuator Pad 6 dB	24/box	288
AP8FM	One-Piece Attenuator Pad 8 dB	24/box	288
AP10FM	One-Piece Attenuator Pad 10 dB	24/box	288
AP20FM	One-Piece Attenuator Pad 20 dB	24/box	288

Please ask your Thomas & Betts representative for a complete catalog of quality Thomas & Betts products or visit us at [www.tnb.com](http://www.tnb.com). For customer service, call **1-800-685-9452**. For technical questions, call **1-888-862-3289**.

© 2006 Thomas & Betts Corporation. All rights reserved.

**Thomas & Betts Corporation**  
Communications Products Group  
Tel: 800-920-0328 • 901-252-5000  
Fax: 800-283-6756 • 901-252-1389



## LRC®

### TWO-PIECE ATTENUATOR PADS

Thomas & Betts two-piece LRC® in-line Attenuator Pads are designed for applications including RF attenuation for Set Top Boxes and VoIP/Cable Modems. These attenuators reduce RF signal overload and intermodulation caused by high input levels.

- Attenuation flatness within  $\pm 0.5$  dB from 5 MHz to 1 GHz (20 dB Attenuation  $\pm 0.7$  dB)
- Nickel plated Brass Body and Tin Plated Beryllium Copper Seizing Contact (Seizing Contact retention 20 grams minimum)

#### PHYSICAL PROPERTIES

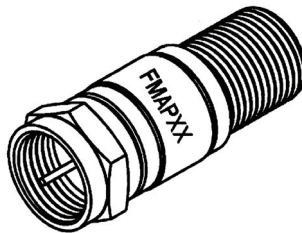
- Body Components: Brass
- Body Finish: Nickel
- Seizing Pin: Beryllium Copper
- Pin Finish: Tin

#### ELECTRICAL PROPERTIES

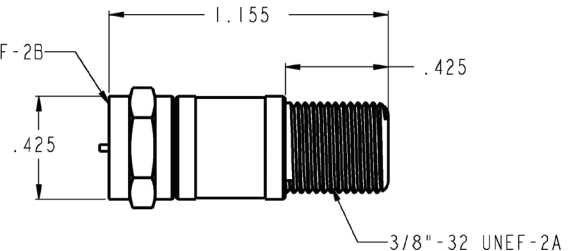
- Attenuation:
  - FMAP3 - 3 dB +/- .5 dB
  - FMAP6 - 6 dB +/- .5 dB
  - FMAP8 - 8 dB +/- .5 dB
  - FMAP10 - 10 dB +/- .5 dB
  - FMAP20 - 20 dB +/- .7 dB

#### MECHANICAL PROPERTIES

- Retention Force of Female Contact: 20 grams minimum



3/8" - 32 UNEF - 2B



.437 HEX

#### ORDERING INFORMATION

CATALOG #	CONNECTOR TYPE	INNER PACK	OUTER PACK
<b>LRC® TWO-PIECE ATTENUATOR PADS</b>			
FMAP3	Attenuator Pad 3 dB	5	600
FMAP6	Attenuator Pad 6 dB	5	600
FMAP8	Attenuator Pad 8 dB	5	600
FMAP10	Attenuator Pad 10 dB	5	600
FMAP20	Attenuator Pad 20 dB	5	600

Please ask your Thomas & Betts representative for a complete catalog of quality Thomas & Betts products or visit us at [www.tnb.com](http://www.tnb.com). For customer service, call **1-800-685-9452**. For technical questions, call **1-888-862-3289**.

© 2006 Thomas & Betts Corporation. All rights reserved.

**Thomas & Betts Corporation**  
 Communications Products Group  
 Tel: 800-920-0328 • 901-252-5000  
 Fax: 800-283-6756 • 901-252-1389

## SNAP-N-SEAL® CABLE PREPARATION TOOLS

Thomas & Betts' cable preparation tools provide a reliable and effective method to prepare coaxial cable. Color-coded blade modules housed in one tool allow for preparation of a range of cable sizes.

CST596596



CSTMV596



CST596711

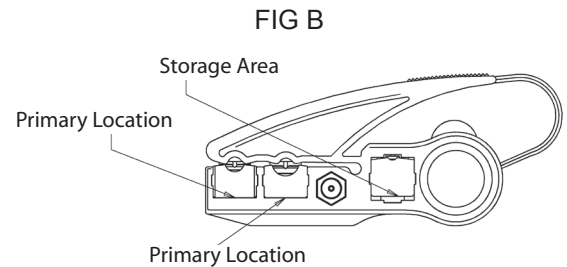
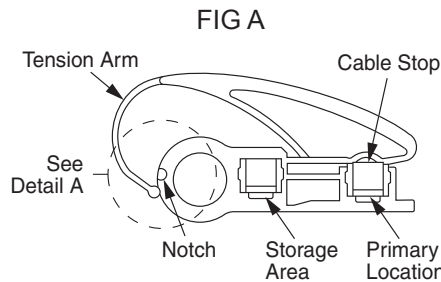
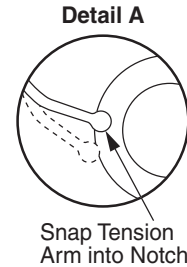


CST596711MV



CST596596MV

- Consistent one-step cable preparation
- Compatible with all Snap-N-Seal® connectors
- Color-coded replacement blades available
- Built-in storage area for the unused blade module
- High strength polymer tool body
- Ergonomically designed to fit the hand
- Finger loop for easy cable preparation



### ORDERING INFORMATION

CATALOG #	DESCRIPTION	FIGURE	BLADE MODULE COLOR	CABLE SIZE	INNER PACK
<b>Cable Preparation Tools</b>					
CST596596	Cable preparation tool with 2 blade modules for preparation of Series 59/6 coaxial cables	A	Black	Series 59 & 6	1
CSTMV596	Cable preparation tool with 2 blade modules for preparation of Series 59/6 and mini video coaxial cables*	A	Black	Series 59 & 6	1
			Green	Mini Video*	
CST596711	Cable preparation tool with 2 blade modules for preparation of Series 59/6/7 & 11 coaxial cables	A	Black	Series 59 & 6	1
			Gray	Series 7 & 11	
CST596711MV	Cable preparation tool with 3 blade modules for preparation of Series 59/6/7/11 and mini video coaxial cables*	B	Black	Series 59 & 6	1
			Gray	Series 7 & 11	
			Green	Mini Video*	
CST596596MV	Cable preparation tool with 3 blade modules for preparation of Series 59/6 and mini video coaxial cables*	B	Black	Series 59 & 6	1
			Green	Mini Video*	
<b>Blade Modules</b>					
RC596	Replacement blade module	N/A	Black	Series 59 & 6	10
RCMV	Replacement blade module	N/A	Green	Mini Video*	10
RC711	Replacement blade module	N/A	Gray	Series 7 & 11	10

\* For use with CommScope 7538 HDTV and Belden 1855A Precision Video Cable or equivalent

Please ask your Thomas & Betts representative for a complete catalog of quality Thomas & Betts products or visit us at [www.tnb.com](http://www.tnb.com). For customer service, call **1-800-685-9452**. For technical questions, call **1-888-862-3289**.

© 2007 Thomas & Betts Corporation. All rights reserved.

DATA SHEET # CDS-CST TOOLS

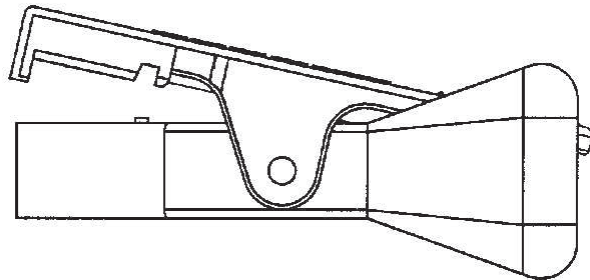
**Thomas & Betts Corporation**  
Communications Products Group  
Tel: 800-920-0328 • 901-252-5000  
Fax: 800-283-6756 • 901-252-1380

## STUBBY™ CABLE PREPARATION TOOL



The innovative new “Stubby” cable preparation tool from Thomas & Betts is designed to allow you to prepare cable in tight spaces where other tools will not fit.

- Facilitates proper cable preparation in confined areas where conventional strip tools don't work
- Eliminates need to run new cable when the short stub-in is just out of reach for the conventional strip tool
- rotates in a natural screw-driver type motion and will not nick the braid or score the center conductor
- Blade cartridges are easily interchangeable
- Standard 1/4" - 1/4" cable preparation
- Patent pending design



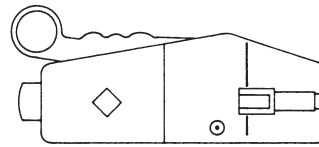
### ORDERING INFORMATION

CATALOG #	DESCRIPTION	INNER PACK	OUTER PACK
STUBBY™ CABLE PREPARATION TOOL			
CSTSTUB	Cable preparation tool for Series 59/6 coaxial cables	1	50



IT1000

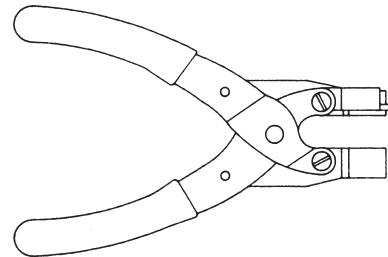
Snap-N-Seal® Drop Installation



Ordering Information

CATALOG NUMBER	DESCRIPTION	USE	INNER PACK	OUTER PACK
IT1000	Strips & Installs	Series 59, 59QS, 59HEC, 6, 6QS	1	100
IT10002	Replacement Blade Cassette	IT1000	1	300

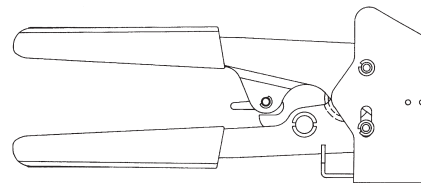
SNSUTL



Ordering Information

CATALOG NUMBER	DESCRIPTION	USE	INNER PACK	OUTER PACK
SNSUTL	Installs, Non-Ratchet	Series 59, 59QS, 59HEC, 6, 6QS, BNC, RCA	1	50

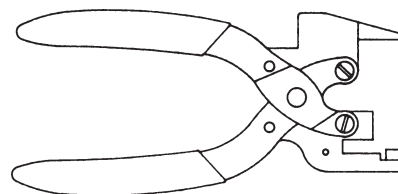
SNSIT



Ordering Information

CATALOG NUMBER	DESCRIPTION	USE	INNER PACK	OUTER PACK
SNSIT	Installs, Ratchet	Series 59, 59QS, 59HEC, 6, 6QS	1	38

L3011B



Ordering Information

CATALOG NUMBER	DESCRIPTION	USE	INNER PACK	OUTER PACK
L3011B	Installs	Series 7, 7QS, 11, 11QS, 320QR	1	50

## 9150US Specifications



### **Snap-N-Seal® Installation Tool**

The 9150US Installation Tool is designed to compress Snap-N-Seal® "F" Male Connectors.



## **9150US Design Advantages**

- A single compression tool installs Snap-N-Seal® 59, 6, 7, 11 and 320 series "F" Male connectors.
- Narrow compression head allows easy access for connector compression in space-limited applications.
- A moveable yoke allows the installer to easily change compression lengths from 59 and 6 "F" Male, to 7, 11 and 320 series "F" Male connectors.
- Ergonomic design comfortably fits the hand to minimize user fatigue and promote productivity.

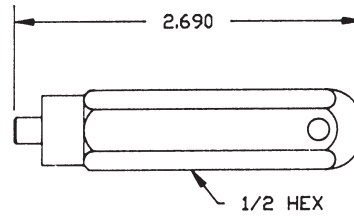
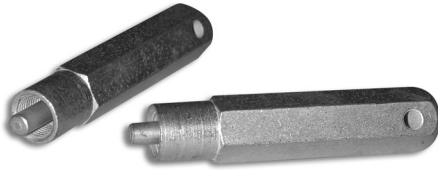
### **Physical**

Body & Handle: Nylon, Glass Filled  
Integral Parts: Steel, Heat Treated

### **Mechanical**

Tool Weight: 4 oz (113 grams)  
Tool Length: 8 inches (20.3 cm)

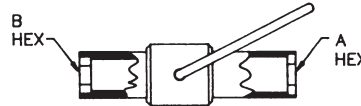
Locking Terminator Tool



Ordering Information

CATALOG NUMBER	INNER PACK	OUTER PACK
LTF	25	400

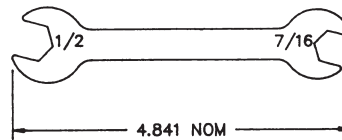
Snap-N-Seal® Installation/Security Tool



Ordering Information

CATALOG NUMBER	DESCRIPTION	DIMENSION		INNER PACK	OUTER PACK
		A	B		
SSTSNS	Security Shield Tool 59 & 6	7/16	1/2	10	100
SSTSNS11	Security Shield Tool 7 & 11	9/16	5/8	10	100

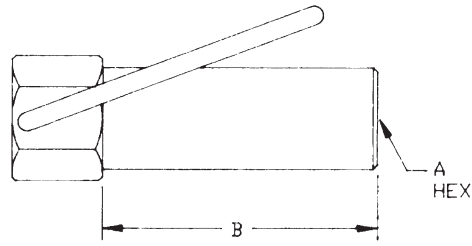
Snap-N-Seal® Combination Wrench



Ordering Information

CATALOG NUMBER	DESCRIPTION	INNER PACK	OUTER PACK
W5437	Combination Wrench	1	1

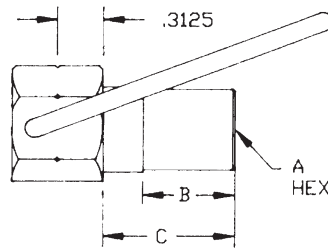
Security Shield Tool



Ordering Information

CATALOG NUMBER	DIMENSION		INNER PACK	OUTER PACK
	A	B		
SST5910	7/16 Hex	1.350	20	200
SST11	9/16 Hex	1.890	20	160

Security Shield Tool



Ordering Information

CATALOG NUMBER	DIMENSION			INNER PACK	OUTER PACK
	A	B	C		
SST59U	7/16 Hex	0.630	0.906	25	200

## X-ON Electronics

Largest Supplier of Electrical and Electronic Components

*Click to view similar products for [Hand Tools](#) category:*

*Click to view products by [Belden](#) manufacturer:*

Other Similar products are found below :

[568681-1](#) [576786-2](#) [58061-1](#) [58176-1](#) [58177-1](#) [58177-2](#) [58284-1](#) [59085](#) [0031](#) [59737-5](#) [015-0339-000](#) [015-8755-001](#) [600-146-06](#) [M15570-25](#) [62200-5709](#) [6-304052-1](#) [63443-1002](#) [63443-3513](#) [63443-4025](#) [63443-7114](#) [6-354778-5](#) [6-354779-2](#) [63600-2995](#) [63810-0105](#) [M8196914-08](#) [M819698-07](#) [662508-1](#) [662908-1](#) [679994-1](#) [679994-2](#) [68764-0001](#) [69001-0105](#) [69002-5525](#) [690124-7](#) [690191-1](#) [690191-4](#) [690696-1](#) [691409-4](#) [691667-1](#) [692006-2](#) [692655-7](#) [692776-1](#) [692776-4](#) [693077-3](#) [693077-4](#) [693597-1](#) [D20418-137](#) [D20419-189](#) [ESR-17x17](#) [ET-LY10](#)