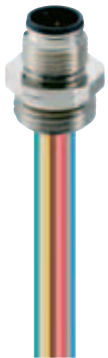


M12-Receptacle Connectors In Accordance With IEC 61076-2-101

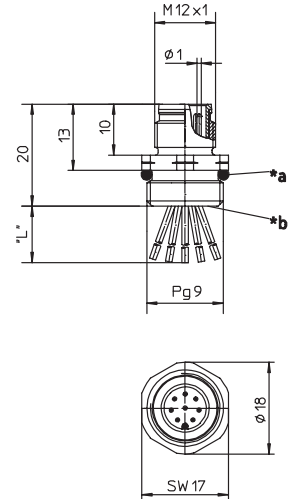
RSF 3...8 | RKF 3...8



Male, 3-, 4-, 5- and 8-Pole

Receptacle, 3-, 4-, 5-, and 8-pole, male, M12 for front mounting, 24 and 22 AWG, panel mount thread PG9.

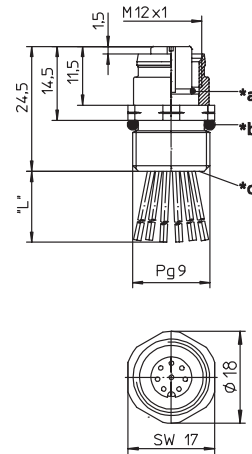
RSF 3...8



Female, 3-, 4-, 5- and 8-Pole

Receptacle, 3-, 4-, 5-, and 8-pole, female, M12 for front mounting, 24 and 22 AWG, panel mount thread PG9.

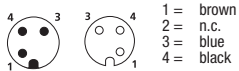
RKF 3...8



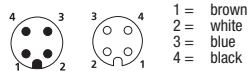
Pin Assignments

Face Views / M12, Male / Female

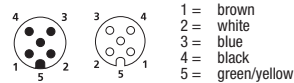
3 pole



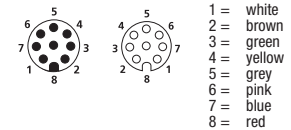
4 pole



5 pole



8 pole





Be Certain with Belden

M12-Receptacle Connectors In Accordance With IEC 61076-2-101
 RSF 3...8 | RKF 3...8

Technical Data

Environmental

Degree of protection IP 67 / NEMA 6P
 Operating temperature range -25°C (-13°F) / +90°C (+194°F)

Mechanical









Housing Brass, nickel-plated
 Insert PUR, black (female)
 3-, 4- and 5-Pole: Nylon (male)
 8-Pole: PUR, black (male)
 Contact Brass, gold over nickel-plated

Electrical

Current rating 3-5 Pole: 4 A
 8 Pole: 1.5 A
 Voltage rating 3-5 Pole: 250 V
 8 Pole: 30 V / 36 V DC

Accessories

Panel nut (RSKF 9)

Part Number		Pins	Characteristics
RSF 3/0.5M	RKF 4-3/0.5M	3	 
RSF 4/0.5M	RKF 4/0.5M	4	 
RSF 5/0.5M	RKF 5/0.5M	5	 
RSF 8/0.5M	RKF 8/0.5M	8	 

X-ON Electronics

Largest Supplier of Electrical and Electronic Components

Click to view similar products for [Ethernet Cables / Networking Cables](#) category:

Click to view products by [Belden](#) manufacturer:

Other Similar products are found below :

[0152660053](#) [603020002](#) [73-7797-25](#) [73-8890-10](#) [73-8890-14](#) [73-8891-14](#) [73-8891-25](#) [73-8892-50](#) [73-8894-10](#) [73-8894-3](#) [73-8895-14](#) [73-8896-7](#) [MCJB2-10P6Q7-120](#) [84909-0204](#) [9QA0-111-12-3.00](#) [1200650742](#) [1200700174](#) [1200860368](#) [1200650013](#) [1201080008](#) [1-21919-1](#) [1300500373](#) [1300101844](#) [1300101845](#) [130050-0004](#) [1300500014](#) [1410147](#) [E16A06002M030](#) [E200102-009-S1](#) [MT14-187L](#) [17-103530](#) [NK5EPC18RDY](#) [NK5EPC18VLY](#) [NK5EPC18YLY](#) [NK5EPC1GRY](#) [NK5EPC30BLY](#) [NK5EPC30VLY](#) [NK5EPC30YLY](#) [NK5EPC4Y](#) [NK5EPC6YLY](#) [NK5EPC8BLY](#) [NK5EPC9YLY](#) [NK6PC30BUY](#) [NK6PC30GRY](#) [NK6PC30RDY](#) [NK6PC30Y](#) [NK6PC30YLY](#) [1969343-6](#) [C501100010](#) [C501106002](#)