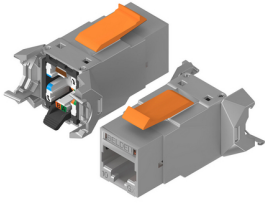


Product: [Ind REVConn C6A STP Jack](#) 

DataTuff Industrial REVConnect RJ45 Jack CAT6A STP



Product Description

Industrial REVConnect IP20 RJ45 Shielded CAT6A Jack with Universal Core

Technical Specifications

Product Overview

Suitable Applications:	TIA Screened Category 6A , ISO Class EA, 10GBASE-T
------------------------	--

Physical Characteristics (Overall)

Height:	0.94
Width:	1.19
Depth:	1.63
Wiring Scheme:	T568A/B
Packaging:	Individually packaged in a plastic bag.
Weight:	0.048 lbs

Connectors

Materials

Description	Material	Type
Front Connection	Copper Clad Flexible PCB, 50uin Gold plated contacts over Nickel	RJ45
Rear Connection	Copper alloy, Gold plated contacts over Nickel	Ind REVConnect
Connector Body	Nickel plated zinc alloy diecast	

Electrical Characteristics

Dielectric Strength:	1,000V RMS @ 60 Hz for 1 minute (Signals to Ground)
Current Rating:	1.300 A
Insulation Resistance:	500 M-Ohm Minimum
Max Contact Resistance:	20 mOhm
Termination Resistance:	2.5 m-Ohm

Temperature Range

Installation Temp Range:	-40°C To +70°C
Storage Temp Range:	-40°C To +70°C
Operating Temp Range:	-40°C To +70°C

Mechanical Characteristics

Footprint/Type:	KeyConnect
Tool Compatibility:	RVUTT01 Termination Tool
Plug /Jack Compatibility:	RJ45, RJ11
Termination Front Connection:	Mated Connection
Termination Front Connection Durability:	750 cycles
Termination Rear Connection:	Mated Connection

Termination Rear Connection Durability:	200 cycles
Cable/Connector Retention:	25 lbs.
Connector/Hardware Retention:	20 lbs
Plug/Connector Retention:	11.250 lbs

Standards

UL Rating:	UL94V-0
TIA/EIA Compliance:	Category 6A - TIA 568.C.2, Category 6A - ISO/IEC 11801:2002 Ed.2
IEEE Compliance:	Power Over Ethernet (PoE) IEEE 802.3at type 1 and 2 (up to 30W), IEEE802.3bt/D1.7 type 3 and 4 (up to 100W), CISCO UPOE (up to 60W), Power over HDBaseTTM (up to 100W)
Other Specification:	UL 1863, IEC 60603-7, FCC part 68-F

Applicable Environmental and Other Programs

Environmental Space:	Indoor
EU Directive 2002/95/EC (RoHS):	Yes
MII Order #39 (China RoHS):	EUP 50

Flammability, LSOH, Toxicity Testing

UL Flammability:	UL2043 Air Handling Spaces
Safety Listing:	c(UL)us Listed

Part Number

Related Parts:	Compatible with Shielded KeyConnect Patch Panels 24p and 48p, Compatible with KeyConnect Faceplates, Adapters, Boxes
----------------	--

Variants

Item #	Color
RVAIJ2SME-B24	Metal
RVAIJ2SME-S1	Metal

Product Notes

Notes:	Please see Installation Guide PX106884.
--------	---

History

Update and Revision:	Revision Number: 0.26 Revision Date: 03-16-2021
----------------------	---

© 2021 Belden, Inc

All Rights Reserved.

Although Belden makes every reasonable effort to ensure their accuracy at the time of this publication, information and specifications described here in are subject to error or omission and to change without notice, and the listing of such information and specifications does not ensure product availability.

Belden provides the information and specifications herein on an "ASIS" basis, with no representations or warranties, whether express, statutory or implied. In no event will Belden be liable for any damages (including consequential, indirect, incidental, special, punitive, or exemplary damages) whatsoever, even if Belden has been advised of the possibility of such damages, whether in an action under contract, negligence or any other theory, arising out of or in connection with the use, or inability to use, the information or specifications described herein.

All sales of Belden products are subject to Belden's standard terms and conditions of sale.

Belden believes this product to be in compliance with all applicable environmental programs as listed in the data sheet. The information provided is correct to the best of Belden's knowledge, information and belief at the date of its publication. This information is designed only as a general guide for the safe handling, storage, and any other operation of the product itself or the one that it becomes a part of. The Product Disclosure is not to be considered a warranty or quality specification. Regulatory information is for guidance purposes only. Product users are responsible for determining the applicability of legislation and regulations based on their individual usage of the product.

X-ON Electronics

Largest Supplier of Electrical and Electronic Components

Click to view similar products for [Modular Connectors](#) / [Ethernet Connectors](#) category:

Click to view products by [Belden](#) manufacturer:

Other Similar products are found below :

[8949-H88/06BLKA/SN](#) [74441-0010/BKN](#) [MP1010RX-1000](#) [MP44RX-1000](#) [PHJ-4P4C-1-V-4](#) [PHP-6P6C-5](#) [GAX-3-66](#) [GAX-8-62](#) [GDCX-PA-66-50](#) [GDCX-PN-64](#) [GDCX-PN-66](#) [GDCX-PN-66-50](#) [GDLX-A-66](#) [GDLX-N-66](#) [GDLX-S-66](#) [GDLX-S-88K](#) [GDTX-S-88-50](#) [GDX-PA-1010](#) [GLX-N-1010M-BLK](#) [GLX-S-88M-BLK](#) [GMX-N-1010](#) [GMX-S-1010](#) [GMX-S-66](#) [GMX-SMT4-N-88](#) [GPX-2-64](#) [GSGX-N-2-88](#) [GSGX-N-4-88](#) [GSX-NS2-88-3.05](#) [GSX-NS2-88-3.05-50](#) [GSX-NS-88-3.05-50](#) [PT-108A-8C-UL](#) [PT-J951-8C](#) [PTS-J531-8CS-50UL](#) [1-1775629-2](#) [A-2014-0-4](#) [GWLX-S-88-GR](#) [GWLX-S9-88-YG](#) [DC-1021-8-WH-6](#) [1300530003](#) [1324640-4](#) [RJ11FTVC2G](#) [RJ11FTVC2N](#) [RJFTVX2SA1G](#) [132764-001](#) [1413235](#) [MP88X-1000](#) [MPS88RX-5000](#) [E5288-S000K3-L](#) [E5908-15A242-L](#) [155302-001](#)