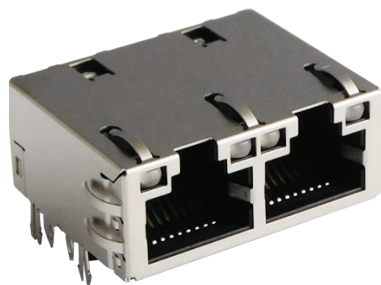
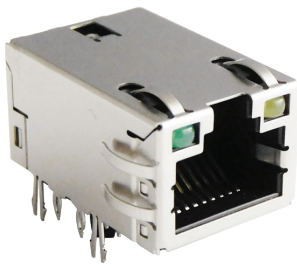


Press-Fit ICMs

Single and Dual Port 1GBaseT MagJack® ICMs

Bel Magnetic Solutions' Press-Fit ICMs are designed for applications and processing scenarios that require a connector that can be pressed onto the PCBA instead of traditional soldering techniques. With the number and type of products connecting to the internet continuing to increase, there come non-traditional applications where normal soldered connectors will not work, resulting in a growing requirement for press-fit type ICM connectors to be used alongside other press-fit I/O connectors on the board.

There is also a growing market segment of applications where the PCBA layer count has grown, creating relatively thick boards where the normal solder lead length cannot be used. Bel Magnetic Solutions' Press-Fit ICMs are not biased to the board thickness and only need a minimum thickness of 0.080in (2.03mm) with no maximum thickness.



Features & Benefits

- Available in 1x1, 1x2 and 2x1 port configurations
- Standard 1GBaseT magnetics design
- Robust eye-of-the-needle design
- Accommodates any network interface configuration for a device needing to be plugged into the network
- Accommodates any board thickness of 0.080in (2.03mm) or greater
- ICMs are compatible with all major Ethernet PHYs on the market

Specifications

- Meets all IEEE 802.3 1GBase-T electrical requirements including RL, IL, Hi-pot and Common Mode parameters
- Operating temperature range of 0°C to 70°C or as specified
- 100% Hi-pot tested in production
- Built in LEDs
- UL recognized
- RoHS 6/6 compliant



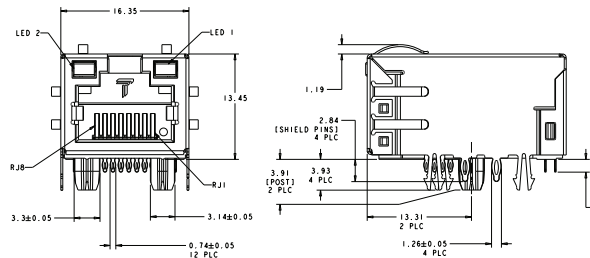
Applications

- Single board computers
- Network adaptor cards
- Designs where a press-fit ICMs is needed
- Applications where the PCBA is thicker than 0.150in (3.81mm). Product can be used for traditional board thicknesses as well
- Non-traditional equipment where an Ethernet port is needed – such as commercial refrigeration, cooking, processing, factory automation

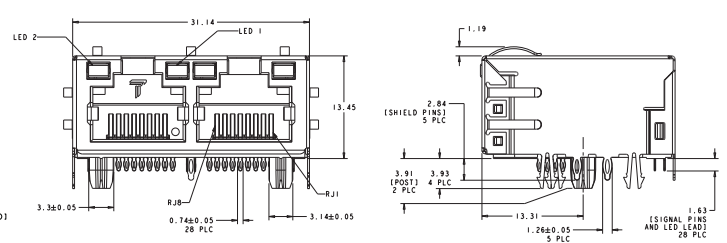
Part Numbers

Bel Part Number	Speed	Port Configuration	Port Count	Operating Temperature	LED	LED Type
1840772-8	1GBase-T	Tab Up	1x1	0 to 70°C	Yes	G/Y
1840572-6	1GBase-T	Tab Up	1x2	0 to 70°C	Yes	GY/GY
1840572-7	1GBase-T	Tab Up	1x2	0 to 70°C	Yes	G/G
08G0-281D-GUA	1GBase-T	Both	2x1	0 to 70°C	No	Light-pipe

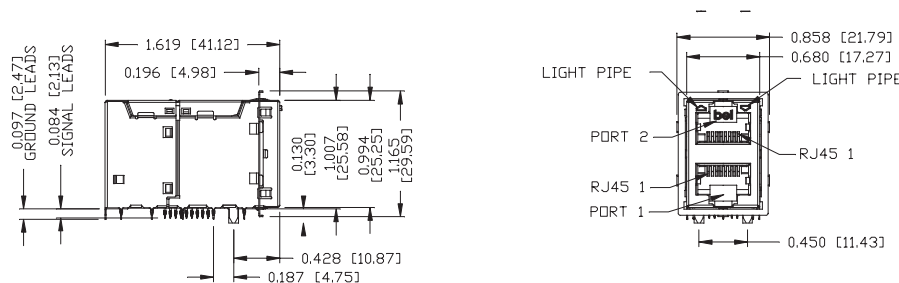
1840772-8



1840572-6, 1840572-7



08G0-281D-GUA



X-ON Electronics

Largest Supplier of Electrical and Electronic Components

Click to view similar products for [Modular Connectors / Ethernet Connectors](#) category:

Click to view products by [Bel Fuse](#) manufacturer:

Other Similar products are found below :

[8949-H88/06BLKA/SN](#) [74441-0010/BKN](#) [MP1010RX-1000](#) [MP44RX-1000](#) [PHJ-4P4C-1-V-4](#) [PHP-6P6C-5](#) [GAX-3-66](#) [GAX-8-62](#) [GDCX-PA-66-50](#) [GDCX-PN-64](#) [GDCX-PN-66](#) [GDCX-PN-66-50](#) [GDLX-A-66](#) [GDLX-N-66](#) [GDLX-S-66](#) [GDLX-S-88K](#) [GDLX-SMT-S-88](#) [GDTX-S-88-50](#) [GDX-PA-1010](#) [GLX-N-1010M-BLK](#) [GLX-S-88M-BLK](#) [GMX-N-1010](#) [GMX-S-1010](#) [GMX-S-66](#) [GMX-SMT4-N-88](#) [GPX-2-64](#) [GSGX-N-2-88](#) [GSGX-N-4-88](#) [GSX-NS2-88-3.05](#) [GSX-NS2-88-3.05-50](#) [GSX-NS-88-3.05-50](#) [PT-108A-8C-UL](#) [PT-J951-8C](#) [PTS-J531-8CS-50UL](#) [1-1775629-2](#) [A-2014-0-4](#) [GWLX-S-88-GR](#) [GWLX-S9-88-YG](#) [DC-1021-8-WH-6](#) [1300530003](#) [1324640-4](#) [RJ11FTVC2G](#) [RJ11FTVC2N](#) [RJFTVX2SA1G](#) [132764-001](#) [1413235](#) [MP88X-1000](#) [MPS88RX-5000](#) [E5288-S000K3-L](#) [E5908-15A242-L](#)