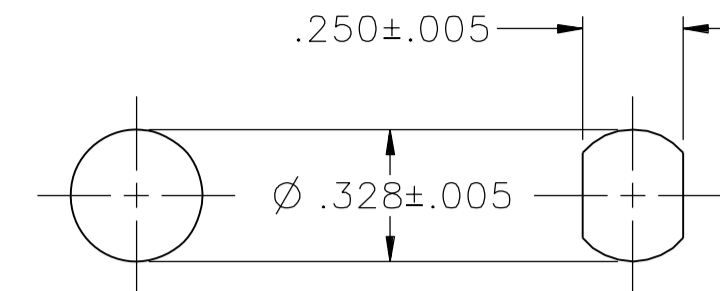


PART NUMBER	ITEM ①	BODY	COLOR	ITEM ②	STUD	ITEM ③	THUMB NUT	COLOR	ITEM ④	WASHER	ITEM ⑤	CAPTIVE NUT	ITEM ⑥	MOUNTING NUT
111-0101-001		NYLON	WHITE		BRASS SILVER PL .00005 MIN		NYLON	WHITE		BRASS SILVER PL .0001 MIN		BRASS NICKEL PL		BRASS NICKEL PL .0001 MIN
111-0102-001			RED					RED						
111-0103-001			BLACK					BLACK						
111-0104-001			GREEN					GREEN						
111-0105-001														
111-0106-001			ORANGE					ORANGE						
111-0107-001			YELLOW					YELLOW						
111-0108-001			BROWN					BROWN						
111-0109-001														
111-0110-001			BLUE					BLUE						
111-0111-001														
111-0112-001			VIOLET					VIOLET						
111-0113-001			GRAY					GRAY						
111-0114-001														
111-0115-001														
111-0116-001														
111-0117-001														
111-0118-001														
111-0119-001														
111-0120-001														

DRAWING NO.  
C - 111-0101/0120-001

0 REVISIONS

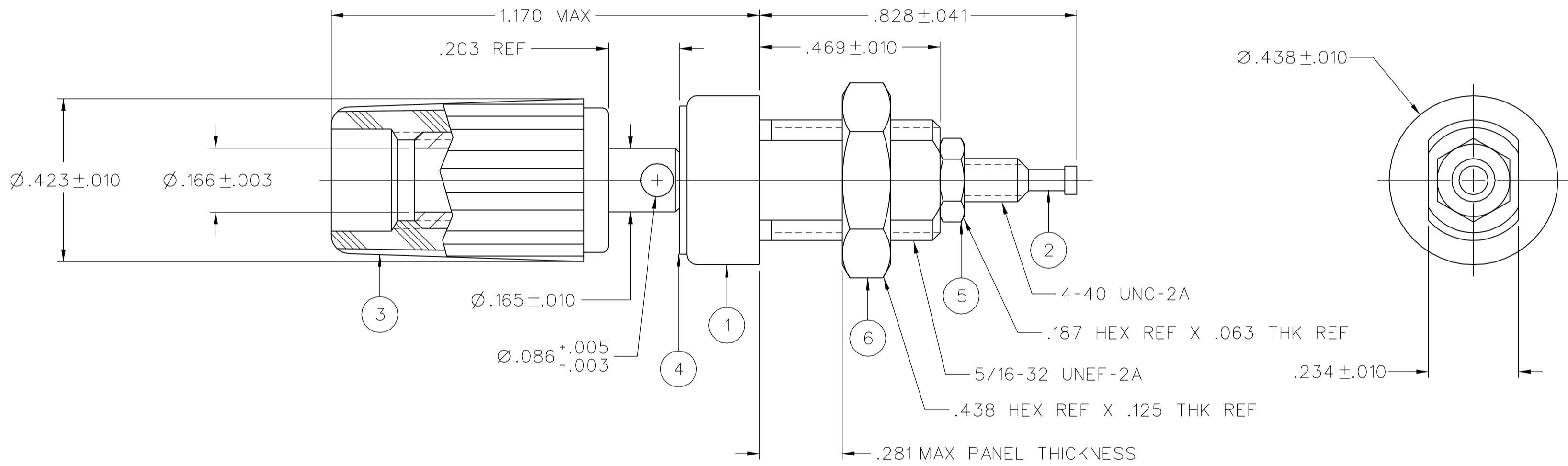
REVISED AND REDRAWN. DRAWING WAS "C" SIZE 111-0101/0120-001/110 DATED 9-12-88. SPLIT INTO 4 SEPERATE DWGS. CREATED SHEET 2.  
\*\*\*\*\*  
\* REVISION NUMBER FOLLOWED BY AN ALPHA \*  
\* CHARACTER INDICATES DRAWING CLARIFICATION OR PART NUMBER ADDITION ONLY. \*  
\*\*\*\*\*



MOUNTING HOLE OPTIONS

2:1

31c 2-11-03 R H R J B ECN 48700



NOTES:

- SPECIFICATIONS:
- ELECTRICAL:
- CURRENT RATING: 15 AMPS DC MINIMUM
  - DIELECTRIC WITHSTANDING VOLTAGE: 5700 VRMS MINIMUM
  - RECOMMENDED WORKING VOLTAGE: 2850 VRMS MAXIMUM
  - INSULATION RESISTANCE: 5000 MEGOHMS MINIMUM
  - CONTACT RESISTANCE: 10 MILLIOHMS MAXIMUM (MATING PLUG)
  - 2 MILLIOHMS MAXIMUM (\*16 WIRE TO TERMINAL)
  - CAPACITANCE (STUD TO PANEL): 3.3 PF NOMINAL
- MECHANICAL:
- THUMBNUIT WITHSTANDING TORQUE: 4 IN-LB MINIMUM
  - INSULATOR WITHSTANDING TORQUE: 8 IN-LB MINIMUM
  - PLASTIC MOUNTING THREAD STRIPPING TORQUE: 6 IN-LB MINIMUM
  - WIRE ACCEPTABILITY: 16 AWG OR SMALLER
  - WIRE ATTACHMENT: SOLDER
  - MATING REFERENCE: BANANA PLUG WIDTH: .175 NOMINAL
  - CROSSHOLE WIRE: 12 AWG OR SMALLER
  - THUMBNUIT DURABILITY: 1000 CYCLES
- ENVIRONMENTAL:

(MEETS OR EXCEEDS THE APPLICABLE PARAGRAPH OF MIL-P-55149)

OPERATING TEMPERATURE: -55 DEG C TO 85 DEG C

TEMPERATURE RISE AT RATED CURRENT: 10 DEG C

CORROSION: MIL-STD-202, METHOD 101, CONDITION B

SHOCK: MIL-STD-202, METHOD 213, CONDITION 1

VIBRATION: MIL-STD-202, METHOD 201

MOISTURE RESISTANCE: MIL-STD-202, METHOD 106

CUSTOMER DRAWING

THIS DRAWING TO BE INTERPRETED PER ASME Y 14.5M - 1994

"μSTATION"

COMPANY CONFIDENTIAL

TOLERANCE UNLESS OTHERWISE SPECIFIED		DRAWN BY	DATE
DECIMALS	mm	RJB	1-9-03
.XX	_____	CHECKED BY	DATE
.XXX	_____		
MATL	_____	APPROVED BY	DATE
		RJB	2-12-03
FINISH	_____	RELEASE DATE	2-12-03
		U/M INCH	SCALE 4:1

**cinch** CONNECTIVITY SOLUTIONS  
a bel group

Cinch Connectivity Solutions  
P.O. Box 1732  
Waseca, MN 56093  
1-800-247-8256

TITLE		SHEET	DRAWING NO.
ASSEMBLY, BINDING POST INSULATED, THREADED STUD		2 OF 2	C - 111-0101-0120-001

## X-ON Electronics

Largest Supplier of Electrical and Electronic Components

*Click to view similar products for [Test Plugs & Test Jacks](#) category:*

*Click to view products by [Bel Fuse](#) manufacturer:*

Other Similar products are found below :

[01-2601-4-0210](#) [01-2601-4-0212](#) [01-2604-4-0212](#) [01-2604-5-0210](#) [01-2150-1-0312](#) [01-2350-1-02](#) [01-2352-1-02](#) [01-2368-1-02](#) [01-2604-4-0210](#) [01-2604-5-0212](#) [01-2606-4-0210](#) [01-2606-4-0212](#) [01-2606-5-0212](#) [M39024/10-01G](#) [M39024/10-17G](#) [M39024/11-09G](#) [M39024/11-42](#) [M39024/11-43](#) [M39024/12-08](#) [707-5311](#) [707-5402-01-19](#) [707-5410](#) [923739-40-I](#) [R644543000](#) [R948161000](#) [R999351000](#) [1408-4](#) [1499-101](#) [1533-1](#) [1659559](#) [1659567](#) [1663921](#) [1663939](#) [1696-102](#) [174-R825B-EX](#) [NYS508-BU](#) [NYS508-O](#) [211-101](#) [RS100GBL](#) [RS250GBL](#) [251-102](#) [25-2251-2-03](#) [25-2259-2-03](#) [923743-16-I](#) [923743-24-I](#) [923743-28-I](#) [2854-BLU](#) [2970-BLK](#) [30-443G](#) [1680](#)