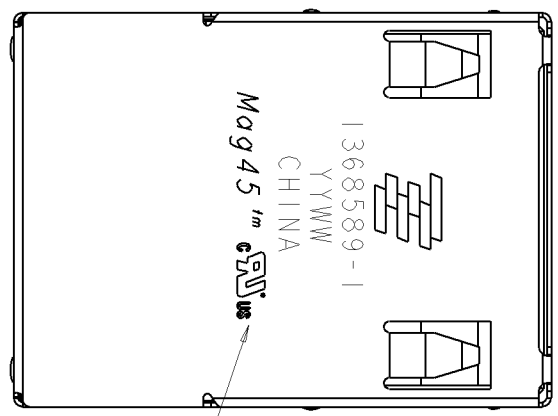
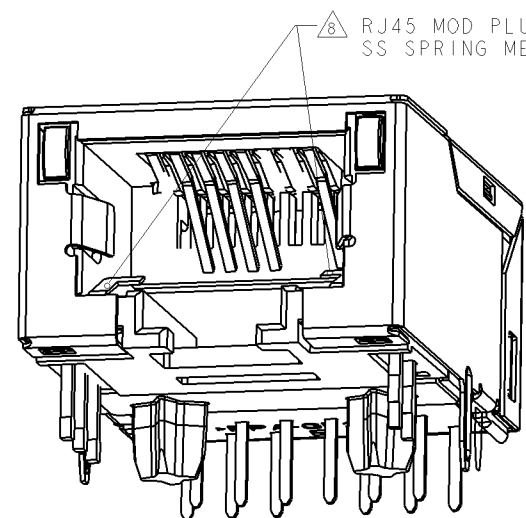


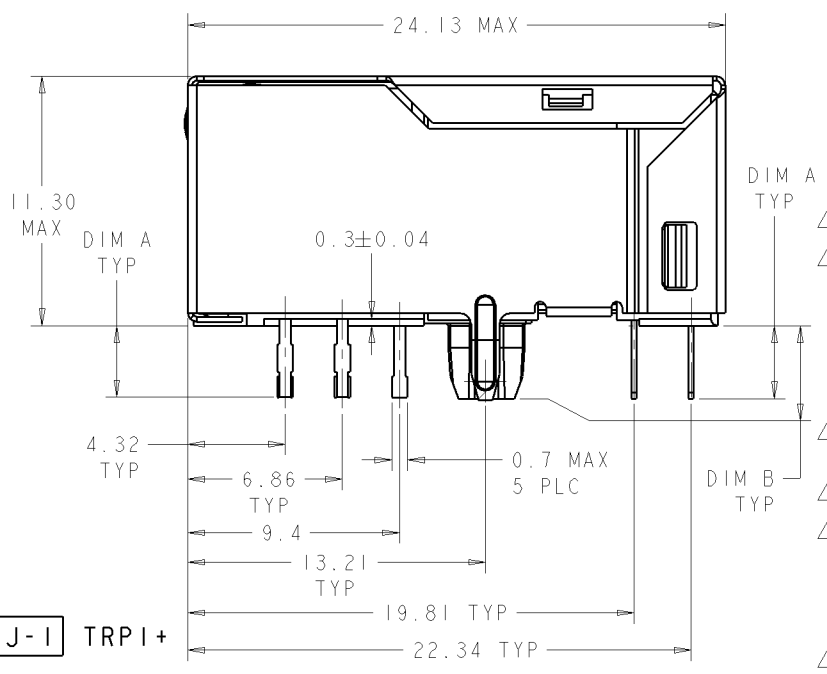
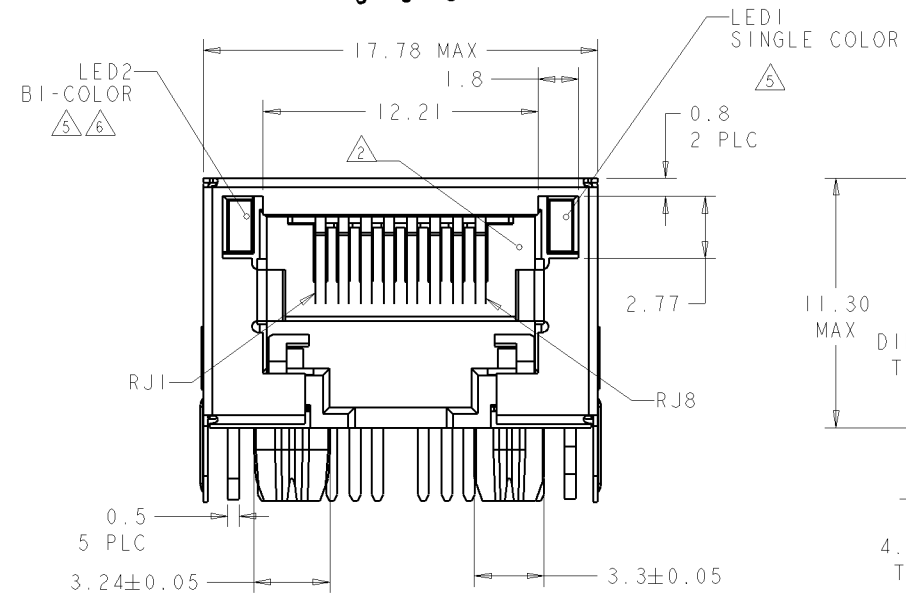
LOC	QTY	REVISIONS	DATE	BY	APPD
AA	00				
A		PER ECO-07-004766	01MAR2007	TY	TX
B		PER ECO-07-017033	23JUL2007	TY	TX
C		PER ECO-08-010020	11APR2008	RQ	TX
D		PER ECO-08-013010	22OCT2008	TY	TX



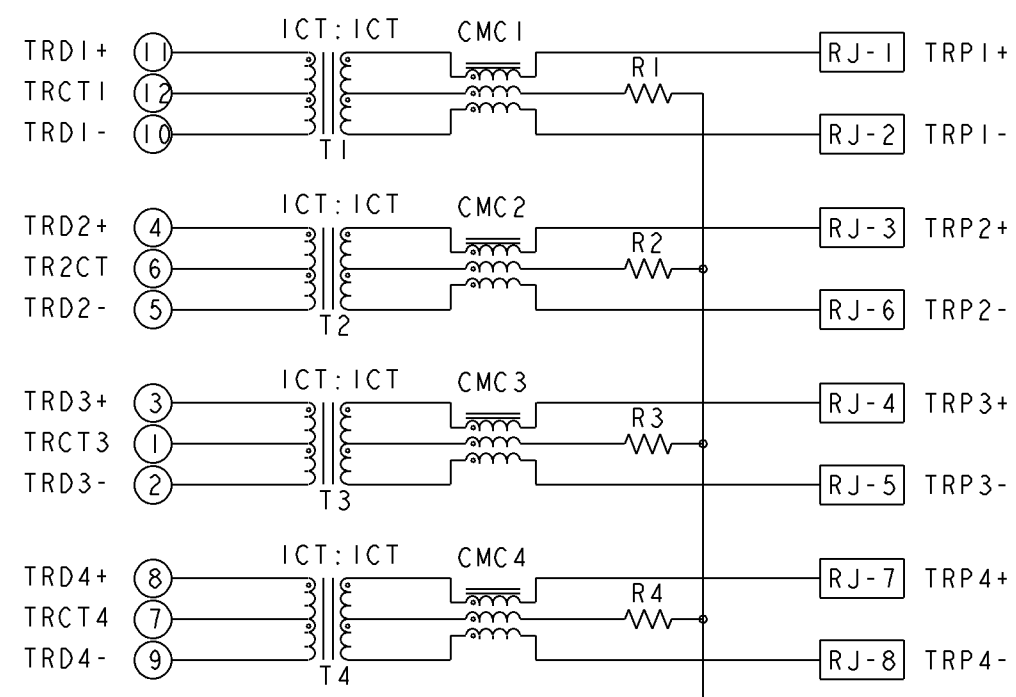
- MATERIALS:**
 - HOUSING: HIGH TEMPERATURE NYLON, BLACK, UL 94V-0
 - SHIELD: 0.20±0.02mm THICK, BRASS PREPLATED WITH 0.76µm MIN SEMI-BRIGHT NICKEL; POST-DIPPED WITH 2 µm MIN SAC 305 ALLOY LEAD FREE SOLDER (TIN PRIMARY, 3% SILVER, 0.5% COPPER)
 - CONTACT TAILS: 0.25mm THICK, PHOSPHOR BRONZE, 1.27 µm MIN OVERALL NICKEL UNDERPLATE, 3 µm MIN TIN PLATE
 - MOD JACK CONTACTS: 0.25mm THICK, PHOSPHOR BRONZE, 1.27 µm MIN OVERALL NICKEL UNDERPLATE, WITH 0.76µm MIN LOCALIZED GOLD PLATE AT PLUG INTERFACE
 - LIGHT EMITTING DIODE (LED): DIFFUSED EPOXY LENS, CARBON STEEL WIREFRAME PREPLATED WITH 2.03µm SILVER PLATE OVER 1.02µm NICKEL OVER 1.02µm COPPER UNDERPLATES; LEADS POST-PLATED WITH 3.05 µm Min TIN.
 - LIGHT PIPE: POLYETHER SULFONE
- RJ45 JACK CAVITY CONFORMS TO FCC RULES AND REGULATIONS PART 68, SUB-PART F.**
- MAGNETICS:**
 - APPLICATION: 10/100/1000 BASE-T
 - IMPEDANCE: 100 OHMS ±15%
 - TURNS RATIO (CHIP:CABLE): 1:1 ALL 4 PAIRS
 - OPEN CIRCUIT INDUCTANCE (OCL): 350µH (MIN) @100KHz, 0.1 VRMS
 - 8 mA DC BIAS FROM 0°C TO 70°C, ALL FOUR PAIRS.
 - ALL FOUR PAIRS BI-DIRECTIONAL
 - PERFORMANCE @25°C:

FREQUENCY	INSERTION LOSS (dB MAX)	RETURN LOSS (dB MIN) CIRCUIT IMPEDANCE = 100 OHMS ±15%	COMMON MODE REJECTION RATIO (dB MIN)	CROSSTALK ATTENUATION (dB MIN)
0.5 MHz-40.0 MHz	1.1	18.0	30	35
40.1 MHz-100.0 MHz		12-20 log(f/80) f IS FREQUENCY IN MHz		33-20 log(f/50) f IS FREQUENCY IN MHz

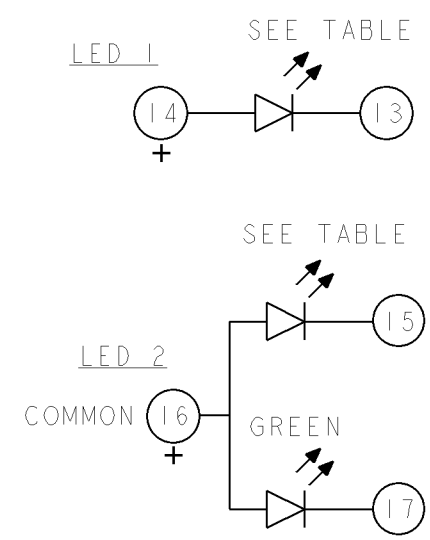
- ISOLATION VOLTAGE: COMPLIES WITH IEEE802.3.2002, PARA 40.6.1.1, ITEM a AND b
- OPERATING TEMPERATURE: FROM 0°C TO 70°C**
- LED IS DRIVEN WITH CONSTANT CURRENT AT APPROX 20mA.**
 LED COLOR: DOMINANT WAVELENGTH (λD): GREEN 568 nm TYP. at IF=20mA
 FORWARD VOLTAGE (VF): GREEN 2.2V TYP. at IF=20mA
 DOMINANT WAVELENGTH (λD): YELLOW 588 nm TYP. at IF=20mA
 FORWARD VOLTAGE (VF): YELLOW 2.1V TYP. at IF=20mA
 DOMINANT WAVELENGTH (λD): ORANGE 605 nm TYP. at IF=20mA
 FORWARD VOLTAGE (VF): ORANGE 2.1V TYP. at IF=20mA
- LED 2 WILL EMULATE "YELLOW" LIGHT WHEN BOTH GREEN AND ORANGE DIODES ARE DRIVEN AT CONSTANT CURRENT (20 mA RECOMMENDED) TO INDICATE THE THIRD COLOR STATE.**
- ALL DIMENSIONS ARE NOMINAL UNLESS OTHERWISE NOTED.**
- RJ45 MOD PLUG SELECTIVE - THIS CONNECTOR UTILIZES STEEL SPRING MEMBER WHICH PREVENTS THE INSERTION OF A RJ11 (6 POSITION) PLUG INTO THE JACK PORT, WHILE ALLOWING A RJ45 (8 POSITION) PLUG TO MATE FREELY.**
 WARNING: THIS FEATURE WAS DEVELOPED FOR TYPICAL PLUG INSERTION FORCES. EXCESSIVE INSERTION FORCE MAY OVERCOME THE SELECTIVE FEATURES AND DAMAGE THE CONNECTOR.
- TRADEMARK, PART NUMBER, DATE CODE, COUNTRY OF ORIGIN, AND AGENCY APPROVAL MARKING IN APPROXIMATE LOCATION SHOWN**
- 10 1368589-1 & 1368589-9 SHOWN UNLESS OTHERWISE NOTED.
- 11 THESE PARTS ARE COMPLIANT WITH BOTH WAVE SOLDERING PROCESS PEAK SOLDERING TEMPERATURE 260°C MAX, 10 SECONDS MAX; AND IR REFLOW SOLDERING PROCESS PEAK SOLDERING TEMPERATURE 260°C MAX DURATION TIME 10 SECONDS MAX, OVER 230°C WITHIN 40- 60 SECONDS.



8G18 GIGABIT CIRCUIT



CI=1000PF, 3KV, ±10%, X7R DECOUPLING CAP
 R1-R4 = 75 OHMS, 1/16W, ±5% RESISTORS

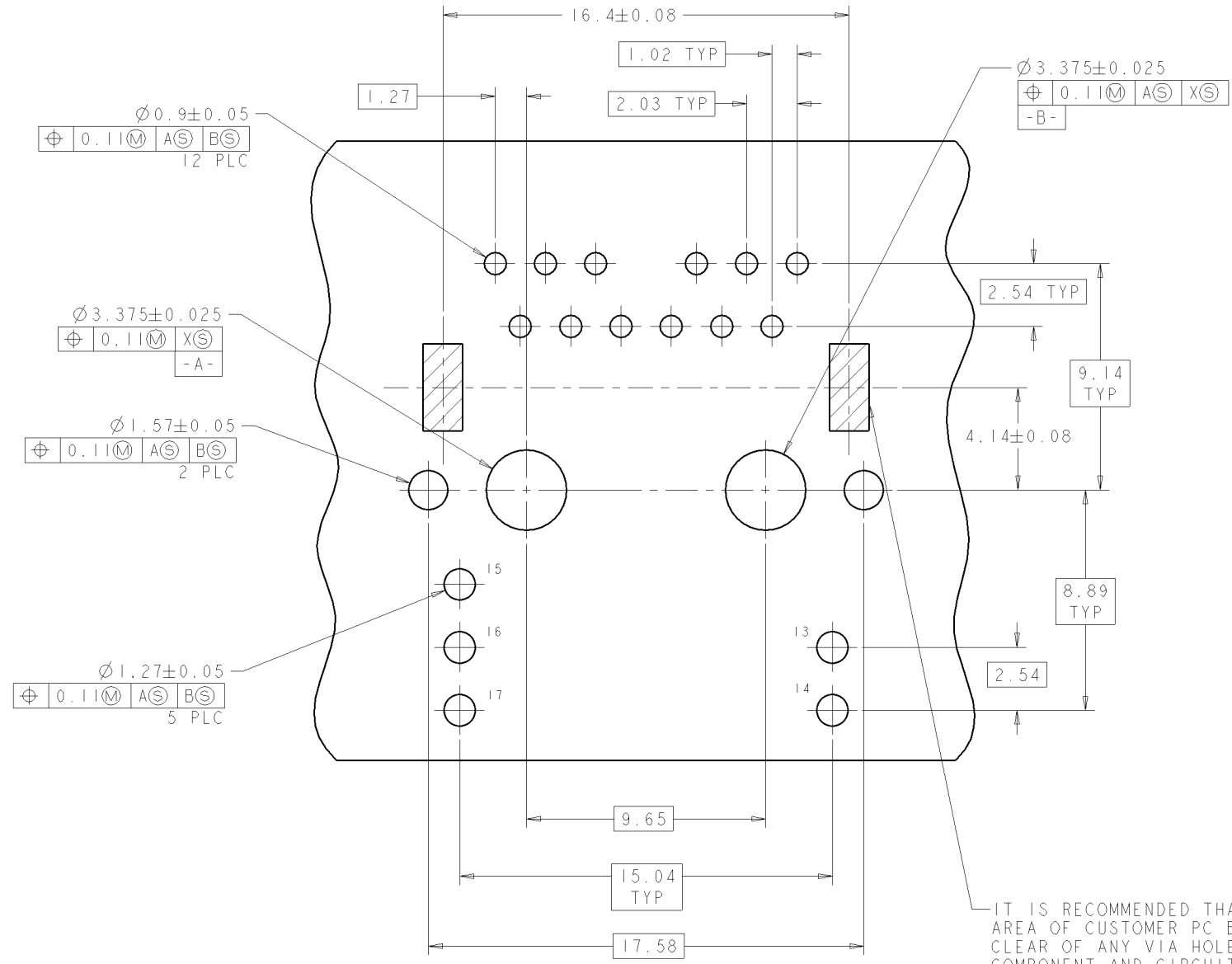


NO	G /YELLOW	GREEN	3.3	3.18	1368589-9
TOP AND SIDES	G /ORANGE	YELLOW	3.3	3.18	1368589-8
TOP AND SIDES	G /ORANGE	YELLOW	1.8	1.8	1368589-7
TOP ONLY	G /ORANGE	YELLOW	1.8	1.8	1368589-6
TOP AND SIDES	G /ORANGE	GREEN	3.3	3.18	1368589-5
NO	G /ORANGE	GREEN	1.8	1.8	1368589-4
NO	G /ORANGE	GREEN	3.3	3.18	1368589-3
NO	G /ORANGE	YELLOW	1.8	1.8	1368589-2
NO	G /ORANGE	YELLOW	3.3	3.18	1368589-1
GROUND TABS	LED 2	LED 1	DIM B	DIM A	PART NO.

TYCO ELECTRONICS CORPORATION
 TOWER YU 27JUL2005
 CDR TERRY XIONG 27JUL2005
 APD TERRY XIONG 27JUL2005
 PRODUCT SPEC 108-2207
 APPLICATION SPEC 114-
 WEIGHT -
 Tyco Electronics
 Transpower Changping China
 1X1 MAG45(TM), MODULAR JACK
 8G18 SERIES GIGABIT CIRCUIT
 SHIELDED, LEDS, TAB DOWN
 SIZE CAGE CODE DRAWING NO RESTRICTED TO
 A 100779 C=1368589 -
 CUSTOMER DRAWING SCALE 1:1 SHEET 1 OF 2 REV D

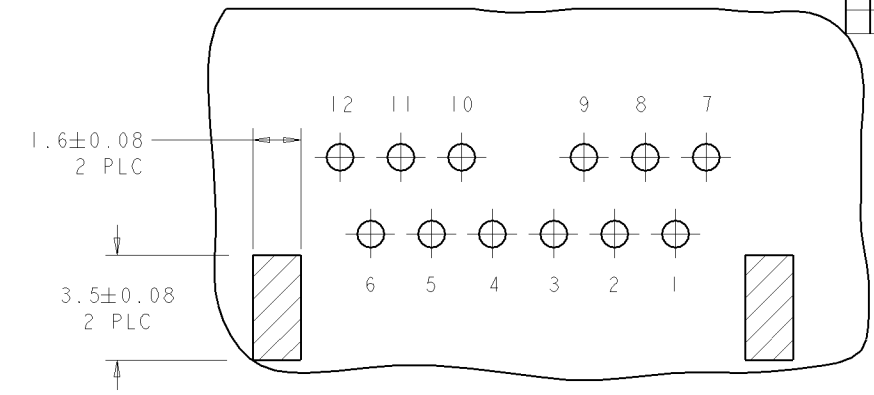
LOC	DIST	REV	DATE	BY	APPD
AA	00				

REVISIONS					
NO.	DATE	DESCRIPTION	BY	APPD	REV
1		SEE SHEET 1			

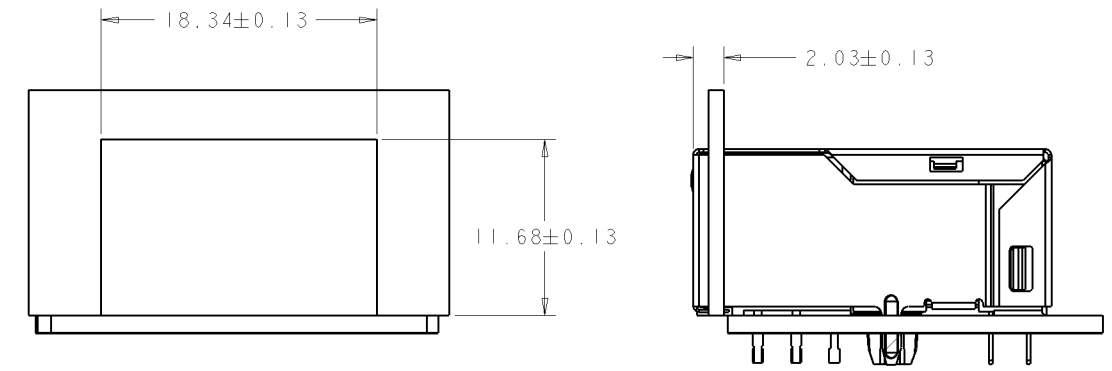


SUGGESTED PCB LAYOUT
(COMPONENT SIDE)

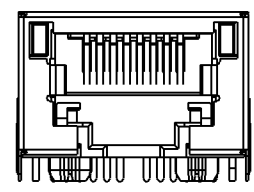
IT IS RECOMMENDED THAT SHADED AREA OF CUSTOMER PC BOARD BE CLEAR OF ANY VIA HOLE, COMPONENT AND CIRCUIT TRACE



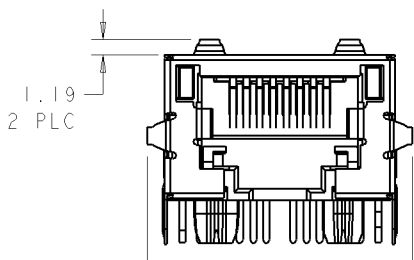
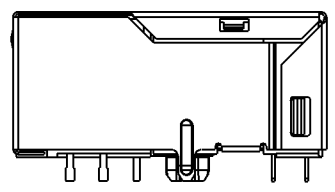
PIN DESIGNATIONS



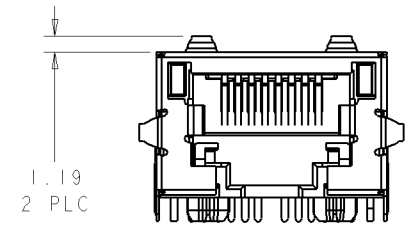
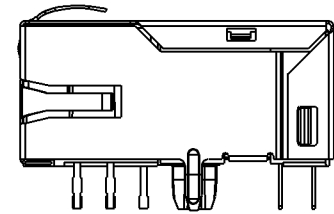
SUGGESTED PANEL OPENING



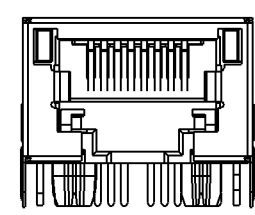
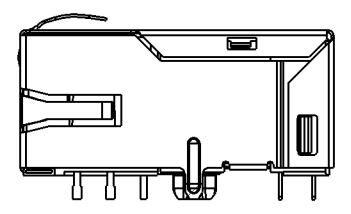
1368589-2
1368589-4



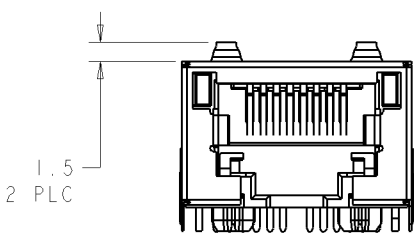
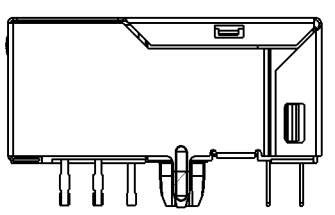
1368589-5
1368589-8



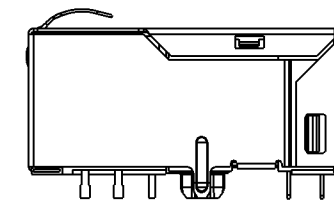
1368589-7



1368589-3



1368589-6



DIMENSIONS: mm 		TOLERANCES UNLESS OTHERWISE SPECIFIED: 0 PLC ±0.25 1 PLC ±0.25 2 PLC ±0.25 3 PLC ±0.25 4 PLC ±0.25 ANGLES ±1		DWN TOWER YU 27JUL2005 CDR TEDDY XIONG 27JUL2005 APFD TEDDY XIONG 27JUL2005 PRODUCT SPEC 108-2207 APPLICATION SPEC 114- WEIGHT MATERIAL FINISH		Tyco Electronics Transpower Changping China NAME 1X1 MAG45(TM), MODULAR JACK 8G18 SERIES GIGABIT CIRCUIT SHIELDED, LEDS, TAB DOWN SIZE A CAGE CODE 100779 DRAWING NO. C=1368589 RESTRICTED TO SCALE 7:2 SHEET 2 OF 2 REV D	
-----------------------	--	--	--	---	--	---	--

X-ON Electronics

Largest Supplier of Electrical and Electronic Components

Click to view similar products for [Modular Connectors / Ethernet Connectors](#) category:

Click to view products by [Bel Fuse](#) manufacturer:

Other Similar products are found below :

[8949-H88/06BLKA/SN](#) [74441-0010/BKN](#) [MP1010RX-1000](#) [MP44RX-1000](#) [PHJ-4P4C-1-V-4](#) [PHP-6P6C-5](#) [GAX-3-66](#) [GAX-8-62](#) [GDCX-PA-66-50](#) [GDCX-PN-64](#) [GDCX-PN-66](#) [GDCX-PN-66-50](#) [GDLX-A-66](#) [GDLX-N-66](#) [GDLX-S-66](#) [GDLX-S-88K](#) [GDLX-SMT-S-88](#) [GDTX-S-88-50](#) [GDX-PA-1010](#) [GLX-N-1010M-BLK](#) [GLX-S-88M-BLK](#) [GMX-N-1010](#) [GMX-S-1010](#) [GMX-S-66](#) [GMX-SMT4-N-88](#) [GPX-2-64](#) [GSGX-N-2-88](#) [GSGX-N-4-88](#) [GSX-NS2-88-3.05](#) [GSX-NS2-88-3.05-50](#) [GSX-NS-88-3.05-50](#) [PT-108A-8C-UL](#) [PT-J951-8C](#) [PTS-J531-8CS-50UL](#) [1-1775629-2](#) [A-2014-0-4](#) [GWLX-S-88-GR](#) [GWLX-S9-88-YG](#) [DC-1021-8-WH-6](#) [1300530003](#) [1324640-4](#) [RJ11FTVC2G](#) [RJ11FTVC2N](#) [RJFTVX2SA1G](#) [132764-001](#) [1413235](#) [MP88X-1000](#) [MPS88RX-5000](#) [E5288-S000K3-L](#) [E5908-15A242-L](#)