

Printed Circuit Mount

14A Series

One-4-All™ International Transformers

International Standards at Lower Cost with Better Performance

Signal's 14A transformers are used in low power applications and provide the high isolation, creepage and clearance necessary to comply with international safety standards.

General Specifications

- Power - 2.5 VA to 56 VA
- Dielectric Strength - 4000 Vrms Hipot
- Dual Primaries - 115/230 V - 50/60 Hz
- Dual Secondaries - Series or parallel
- Insulation System - Class F, 155° C, UL 1446 (E66312)
- Flammability Rating - Bobbin and shroud material meet UL 94-V0

Agency Certifications

- UL recognized to UL 506 / UL 5085-2, File # E63829
- CSA certified to C22.2 No. 66.1, File # 221070
- VDE certified to VDE 0805 / EN 60950, File # 1446

CSA certified to C22.2 No. 66.3 / UL5085-3,
File # 221070 - Class 2 Energy Limited

UL Recognized to UL5085-3 Inherently Limited

* UL Recognized to UL5085-3 Non-Inherently Limited



Part Number Selection

| Part Number | VA | Secondary RMS Rating | |
|---------------|------|----------------------|----------------|
| | Size | Series | Parallel |
| 14A-2.5R-10 | 2.5 | 10.0 VCT @ 0.25 A | 5.0 V @ 0.50 A |
| 14A-5.0R-10 | 5 | 10.0 VCT @ 0.50 A | 5.0 V @ 1.00 A |
| 14A-10R-10 | 10 | 10.0 VCT @ 1.00 A | 5.0 V @ 2.00 A |
| 14A-2.5R-12## | 2.5 | 12.6VCT @ 0.20 A | 6.3 V @ 0.40 A |
| 14A-5.0R-12## | 5 | 12.6 VCT @ 0.40 A | 6.3 V @ 0.80 A |
| 14A-10R-12## | 10 | 12.6 VCT @ 0.80 A | 6.3 V @ 1.60 A |
| 14A-2.5R-16# | 2.5 | 16.0 VCT @ 0.15 A | 8.0 V @ 0.30 A |
| 14A-5.0R-16# | 5 | 16.0 VCT @ 0.31 A | 8.0 V @ 0.62 A |
| 14A-10R-16# | 10 | 16.0 VCT @ 0.62 A | 8.0 V @ 1.25 A |
| 14A-2.5R-20## | 2.5 | 20.0 VCT @ 0.12 A | 10 V @ 0.24 A |
| 14A-5.0R-20# | 5 | 20.0 VCT @ 0.25 A | 10 V @ 0.50 A |
| 14A-10R-20# | 10 | 20.0 VCT @ 0.50 A | 10 V @ 1.00 A |
| 14A-2.5R-24## | 2.5 | 24.0 VCT @ 0.10 A | 12 V @ 0.20 A |
| 14A-5.0R-24## | 5 | 24.0 VCT @ 0.21 A | 12 V @ 0.42 A |
| 14A-10R-24## | 10 | 24.0 VCT @ 0.42 A | 12 V @ 0.84 A |
| 14A-2.5R-28 | 2.5 | 28.0 VCT @ 0.09 A | 14 V @ 0.18 A |
| 14A-5.0R-28 | 5 | 28.0 VCT @ 0.18 A | 14 V @ 0.36 A |
| 14A-10R-28 | 10 | 28.0 VCT @ 0.36 A | 14 V @ 0.72 A |
| 14A-2.5R-36 | 2.5 | 36.0 VCT @ 0.07 A | 18 V @ 0.14 A |
| 14A-5.0R-36 | 5 | 36.0 VCT @ 0.14 A | 18 V @ 0.28 A |
| 14A-10R-36 | 10 | 36.0 VCT @ 0.28 A | 18 V @ 0.56 A |

| Part Number | VA | Secondary RMS Rating | |
|-------------|------|-----------------------|--------------------|
| | Size | Series | Parallel |
| 14A-20-10 | 20 | 10.0 VCT @ 2.0 A | 5.0 V @ 4.0 A |
| 14A-30-10 | 30 | 10.0 VCT @ 3.0 A | 5.0 V @ 6.0 A |
| 14A-56-10 | 56 | 10.0 VCT @ 5.6 A | 5.0 V @ 11.2 A |
| 14A-20-12## | 20 | 12.6 VCT @ 1.6 A | 6.3 V @ 3.2 A |
| 14A-30-12## | 30 | 12.6 VCT @ 2.4 A (2) | 6.3 V @ 4.80 A (4) |
| 14A-56-12* | 56 | 12.6 VCT @ 4.4 A (4) | 6.3 V @ 8.80 A ++ |
| 14A-20-16# | 20 | 16.0 VCT @ 1.25 A | 8.0 V @ 2.50 A |
| 14A-30-16# | 30 | 16.0 VCT @ 1.90 A | 8.0 V @ 3.80 A |
| 14A-56-16 | 56 | 16.0 VCT @ 3.50 A | 8.0 V @ 7.00 A |
| 14A-20-20# | 20 | 20.0 VCT @ 1.00 A | 10 V @ 2.00 A |
| 14A-30-20# | 30 | 20.0 VCT @ 1.50 A | 10 V @ 3.00 A |
| 14A-56-20 | 56 | 20.0 VCT @ 2.80 A | 10 V @ 5.60 A |
| 14A-20-24## | 20 | 24.0 VCT @ 0.83 A | 12 V @ 1.66 A |
| 14A-30-24## | 30 | 24.0 VCT @ 1.25 A (1) | 12 V @ 2.50 A (3) |
| 14A-56-24* | 56 | 24.0 VCT @ 2.33 A (2) | 12 V @ 4.66 A (4) |
| 14A-20-28 | 20 | 28.0 VCT @ 0.72 A | 14 V @ 1.44 A |
| 14A-30-28 | 30 | 28.0 VCT @ 1.06 A | 14 V @ 2.12 A |
| 14A-56-28 | 56 | 28.0 VCT @ 2.00 A | 14 V @ 4.00 A |
| 14A-20-36 | 20 | 36.0 VCT @ 0.56 A | 18 V @ 1.12 A |
| 14A-30-36 | 30 | 36.0 VCT @ 0.82 A | 18 V @ 1.64 A |
| 14A-56-36 | 56 | 36.0 VCT @ 1.56 A | 18 V @ 3.12 A |

Recommended secondary fuse value specified as below:

| (1) | (2) | (3) | (4) |
|-----|-----|-----|-----|
| 1.5 | 2.5 | 3.0 | 5.0 |

++ Parallel connected secondaries NOT Class 2 rated.



Custom versions available upon request.



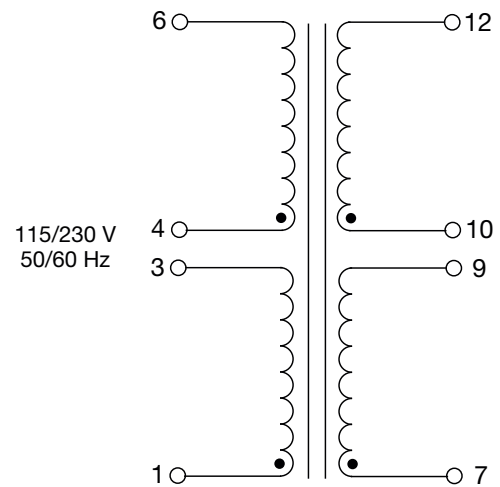
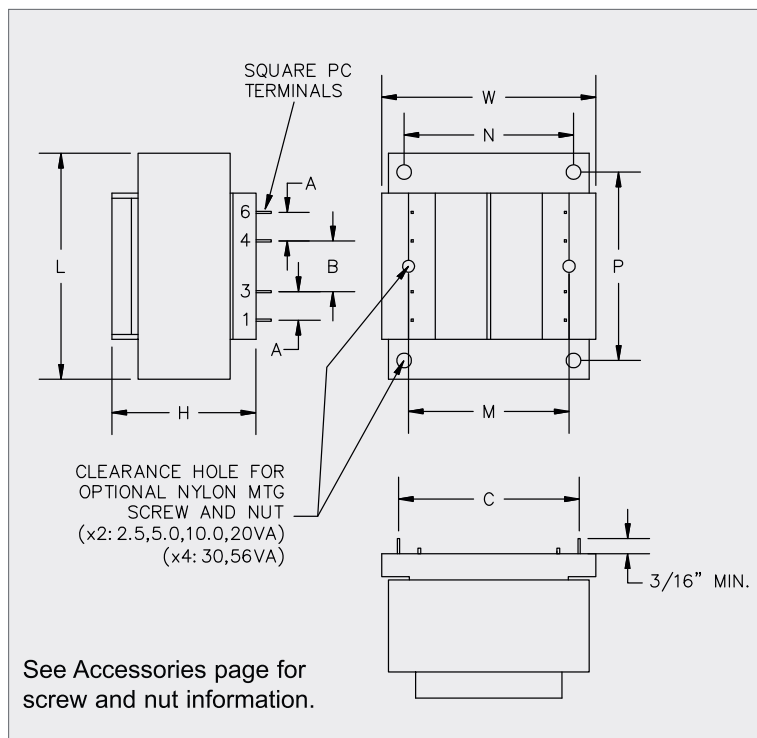
128 Atlantic Avenue, Lynbrook, NY 11563
 Toll Free 866-239-5777 | Tel 516-239-5777 | Fax 516-239-7208
 sales@signaltransformer.com | techhelp@signaltransformer.com

belfuse.com/signal

Mechanical Specifications

| VA | Mechanical Dimensions | | | | | | Sq. Pin Dimensions | Mounting Dimensions | | | Mounting Screw | | Weight | |
|------|-----------------------|----------------|----------------|----------------|-----------------|----------------|--------------------|---------------------|----------------|----------------|----------------|------|-----------------|----------|
| | L | W | H* | A | B | C | | M | N | P | Size | Qty | | |
| Size | Inches (mm) | | | | | | | | | | | Size | Qty | lbs (kg) |
| 2.5 | 1.62 (41.3) | 1.43 (36.5) | 1.12 (28.6) | 0.20 (5.08) | 0.25 (6.35) | 1.00 (25.4) | 0.025 (0.64) | 1.06 (26.9) | - | - | #4 | 2 | 0.25 (0.113) | |
| 5 | 1.62 (41.3) | 1.43 (36.5) | 1.37 (34.9) | 0.20 (5.08) | 0.40 (10.16) | 1.00 (25.4) | 0.025 (0.64) | 1.06 (26.9) | - | - | #4 | 2 | 0.37 (0.168) | |
| 10 | 1.87 (47.6) | 1.56 (39.7) | 1.37 (34.9) | 0.20 (5.08) | 0.40 (10.16) | 1.14 (29.0) | 0.036 (0.91) | 1.25 (31.7) | - | - | #4 | 2 | 0.53 (0.240) | |
| 20 | 2.25 (57.2) | 1.87 (47.6) | 1.62 (41.3) | 0.40 (10.2) | 0.40 (10.2) | 1.46 (37.1) | 0.036 (0.91) | 1.50 (38.1) | - | - | #4 | 2 | 0.90 (0.41) | |
| 30 | 2.62 (66.7) | 2.18 (55.5) | 1.56 (39.7) | 0.55 (13.9) | 0.27 (7.0) | 1.68 (42.7) | 0.045 (1.14) | - | 1.75 (44.4) | 2.18 (55.5) | #6 | 4 | 1.15 (0.52) | |
| 56 | 3.00 (76.2) | 2.50 (63.5) | 1.83 (46.5) | 0.60 (15.2) | 0.30 (7.6) | 1.90 (48.3) | 0.045 (1.14) | - | 2.00 (50.8) | 2.50 (63.5) | #6 | 4 | 1.70 (0.77) | |

*Note: Dimension H represents the total distance from the seating plane to the uppermost surface, stand offs and/or risers inclusive.



Custom versions available upon request.



128 Atlantic Avenue, Lynbrook, NY 11563
Toll Free 866-239-5777 | Tel 516-239-5777 | Fax 516-239-7208
sales@signaltransformer.com | techhelp@signaltransformer.com

belfuse.com/signal

X-ON Electronics

Largest Supplier of Electrical and Electronic Components

Click to view similar products for [Power Transformers](#) category:

Click to view products by [Bel Fuse](#) manufacturer:

Other Similar products are found below :

[ET-030A](#) [F-102X](#) [F-120X](#) [F-14X-1](#) [F-181U](#) [F-18A](#) [F-199U](#) [F-19X](#) [F-202U](#) [F-204U](#) [F-206U](#) [F-227X](#) [F-238U](#) [F-239U-1](#) [F-23U](#) [F24-250-B](#)
[F-242U](#) [F-245U](#) [F-264U](#) [F-265U](#) [F-267U](#) [F-281U](#) [F-283U](#) [F-290X](#) [F-295Z](#) [F-296Z](#) [F-298Z](#) [F-3143P](#) [F-3298Z](#) [F-33U](#) [F-346X](#) [F-35U](#) [F-](#)
[364U](#) [F-392A](#) [F-395X](#) [F-397U](#) [F-412X](#) [F-47U](#) [F-55X-1](#) [F-60U](#) [F-68U](#) [F-71U](#) [F-72Z](#) [F-74U](#) [F-83A](#) [F-84AC](#) [F-85U](#) [F-86U](#) [F-9U](#) [PCT-02](#)