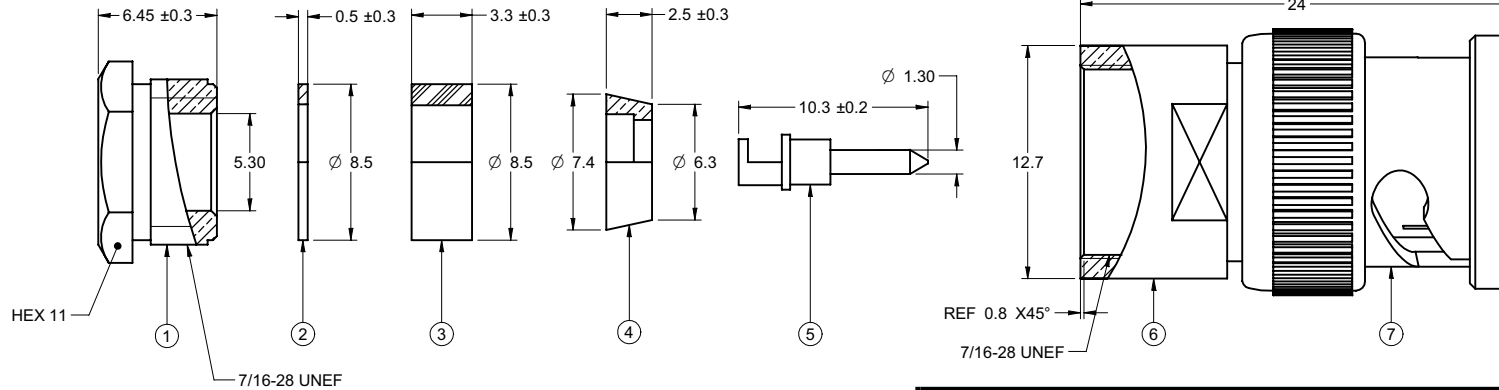


| | | | | | | | | | | |
|-------------|------------------------|------------------------|------------------|------------------------|----------------------|------------------------|-----------------------|---|--|---|
| | 5 | | | 4 | | 3 | | 2 | | 1 |
| PART NUMBER | ITEM ① NUT | ITEM ② WASHER | ITEM ③ GASKET | ITEM ④ TAPER COVER | ITEM ⑤ CONTACT | ITEM ⑥ BODY | ITEM ⑦ NUT | | | |
| 27-9021 | BRASS NICKEL PLATED | BRASS NICKEL PLATED | RUBBER NATURE | BRASS NICKEL PLATED | BRASS GOLD PLATED | BRASS NICKEL PLATED | ZINC NICKEL PLATED | | | |

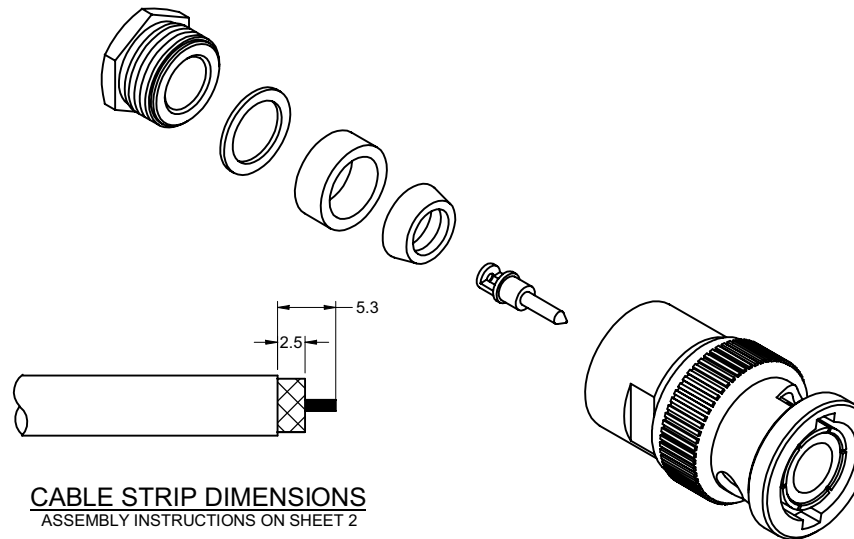
| | |
|------------------------|---|
| DRAWING NO. 27-9021 | |
| REVISIONS | |
| A | RELEASE FOR QUATION 12-30-05 W W T |
| B | CHANGE SOME TOLERANCE; ADD THREAD CHAMFER; ADD 4&5 NOTES. 12-20-06 L Y T |
| C | RELAX CONTACT RESISTANCE 09-14-07 Z W T |



| | | | | | |
|------------------------|---------|-----------|----|------------------|-----------|
| 受控 CONTROLLED DOCUMENT | | | | | |
| 编号 P/N | 27-9021 | 版本 Rev | 0C | 日期 Rel'd Date | Mar 24,08 |

NOTES:

- ELECTRICAL SPECIFICATIONS
 IMPEDANCE: 50 OHMS NOMINAL
 FREQUENCY RANGE: 0-4 GHz
 WORKING VOLTAGE: 500 Vrms MAX AT SEA LEVEL
 DIELECTRIC WITHSTANDING VOLTAGE: 1500 vrms AT SEA LEVEL
 CORONA LEVEL: 375 VOLTS MINIMUM AT 70,000 FEET
 CONTACT RESISTANCE: OUTER - NICKEL PLATED INITIAL 2.5 MILLIOHMS MAXIMUM
 AFTER ENVIRONMENTAL 3.5 MILLIOHMS MAXIMUM
 CENTER - INITIAL 3 MILLIOHMS MAXIMUM
 AFTER ENVIRONMENTAL 4 MILLIOHMS MAXIMUM
 BRAID TO BODY - 2.5 MILLIOHMS MAXIMUM (NICKEL PLATED),
 AFTER ENVIRONMENTAL NOT APPLICABLE
 INSULATION RESISTANCE: 5000 MEGOHMS MINIMUM
- MECHANICAL SPECIFICATIONS
 DURABILITY: 500 CYCLES MIN
 CABLE ACCEPTABILITY: RG58, UG88U
 CABLE RETENTION: 20 lbs MIN
- ENVIRONMENTAL SPECIFICATIONS
 RECOMMENDED TEMPERATURE RANGE: -55 °C TO +85 °C
 MOISTURE RESISTANCE: MIL-STD-202
- PRODUCT SHOULD BE RoHS COMPLIANCE.
- PACKAGING REQUIREMENT FOLLOWS ENGINEER DOCUMENT P/N 836-40200001XX



CABLE STRIP DIMENSIONS
ASSEMBLY INSTRUCTIONS ON SHEET 2

THIS DRAWING TO BE INTERPRETED
PER ANSI Y 14.5M - 1994

COMPANY CONFIDENTIAL

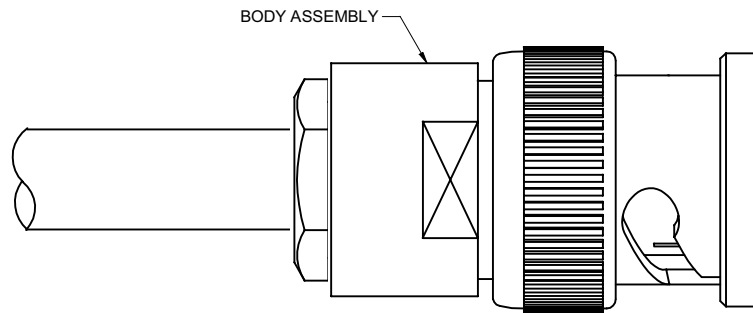
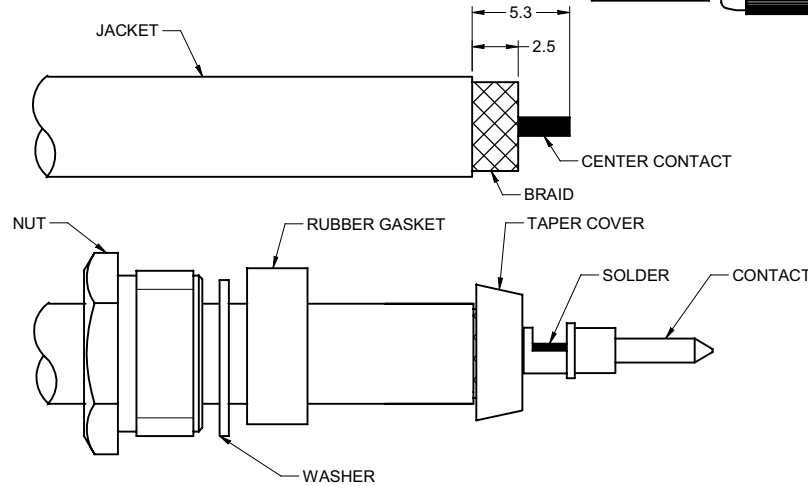
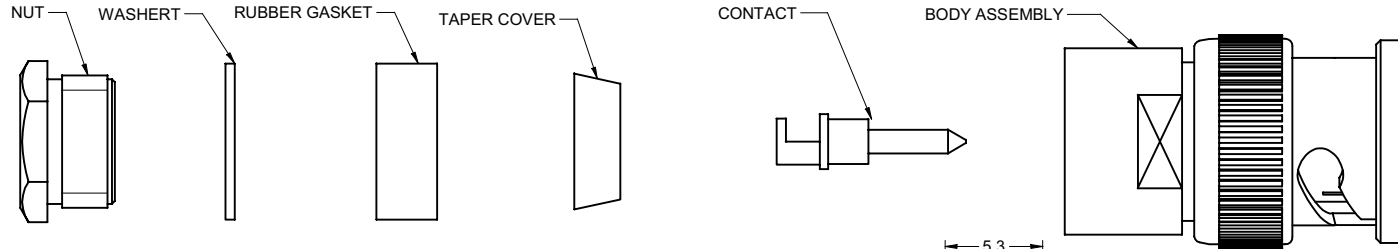
| | | | |
|---|--------|------------------------|------------------|
| TOLERANCE UNLESS OTHERWISE SPECIFIED | | DRAWN BY GARY.ZHG | DATE 09-14-07 |
| DECIMALS | mm | CHECKED BY LINDA.WU | DATE 09-14-07 |
| X | ± 0.5 | APPROVED BY THOMAS | DATE 10-14-07 |
| X.X | ± 0.2 | U/M | mm |
| X.XX | ± 0.1 | | |
| ANGLES | ± 0.5° | | |

| | | | |
|----------------------------|------------------------|---------------------------|--|
| EMERSON Network Power | | Connectivity Solutions | |
| TITLE BNC STANDARD TYPE | | | |
| SHEET 1 OF 2 | DRAWING NO. 27-9021 | SIZE C | |

THIS DRAWING WAS PRODUCED BY COMPUTER,
DO NOT SCALE DRAWING OR UPDATE MANUALLY.

| | | |
|-------------|-------------------|----------|
| PART NUMBER | CABLE | TOOL |
| 27-9021 | RG-58 (UG-88U) | 27-9021P |

| | |
|---|----------------|
| DRAWING NO. 27-9021 | |
| REVISIONS | |
| RELEASE FOR QUOTATION | |
| A | 12-30-05 W W T |
| CHANGE SOME TOLERANCE; ADD THREAD CHAMFER; ADD 4&5 NOTES. | |
| B | 12-20-06 L Y T |
| VERSION UPDATE | |
| C | 09-14-07 Z L T |



ASSEMBLY INSTRUCTIONS

1. TRIM CABLE AS SHOWN.TAKING CARE NOT TO NICK THE INNER CONDUCTOR OR BRAID.
2. RUN NUT, WASHER, RUBBER GASKET AND TAPER OVER THE CABLE, AND FLAIR THE FERRULE OVER THE BRAID.SOLDER THE CONTACT TO THE CENTER CONDUCTOR.
3. PUSH THE CENTER CONTACT HOME INTO THE BODY ASSY.,FELLING IT SNAP INTO PLACE,AND WITH ALL THE LOOSE COMPONENTS IN PLACE COMPLETE THE ASSEMBLY BY WRENCH TIGHTENING THE NUT.

| | | | | | |
|-------------------------------|---------|-----------|----|------------------|-----------|
| 受控 CONTROLLED DOCUMENT | | | | | |
| 编号 P/N | 27-9021 | 版本 Rev | 0C | 日期 Rel'd Date | Mar 24,08 |

| | | | |
|--------------------------------------|--------|------------------------|------------------|
| TOLERANCE UNLESS OTHERWISE SPECIFIED | | DRAWN BY GARY.ZHG | DATE 09-14-07 |
| DECIMALS | mm | CHECKED BY LINDA.WU | DATE 09-14-07 |
| X | ± 0.5 | APPROVED BY THOMAS | DATE 10-14-07 |
| X.X | ± 0.2 | | |
| X.XX | ± 0.1 | | |
| ANGLES | ± 0.5° | U/M | mm |

THIS DRAWING WAS PRODUCED BY COMPUTER, DO NOT SCALE DRAWING OR UPDATE MANUALLY.

| | | | |
|---------------------------------|------------------------|-------------------------------|--|
| EMERSON Network Power | | Connectivity Solutions | |
| TITLE BNC STANDARD TYPE | | | |
| SHEET 2 OF 2 | DRAWING NO. 27-9021 | SIZE C | |

THIS DRAWING TO BE INTERPRETED PER ANSI Y 14.5M - 1994

COMPANY CONFIDENTIAL

X-ON Electronics

Largest Supplier of Electrical and Electronic Components

Click to view similar products for [RF Connectors / Coaxial Connectors](#) category:

Click to view products by [Bel Fuse](#) manufacturer:

Other Similar products are found below :

[8915-1511-000](#) [89674-0827](#) [6001-7071-019](#) [6002-7051-003](#) [6002-7551-202](#) [6059674-1](#) [619550-1](#) [630059-000](#) [M39030/3-01N](#) [6500-7071-046](#) [6769](#) [CX050L2AQ](#) [7002-1541-010](#) [7002-1542-011](#) [7004-1512-000](#) [7009-1511-004](#) [7010-1511-000](#) [7029-1511-060](#) [7101-1541-010](#) [7101-1571-002](#) [7145-1521-002](#) [7203-1571-003](#) [7209-1511-011](#) [7210-1511-015](#) [7210-1511-019](#) [73137-5015](#) [73216-2241](#) [73404-2300](#) [7405-1521-005](#) [7405-1521-802](#) [8527](#) [8547](#) [FS11V](#) [877931](#) [9049-9513-000](#) [9074-9513-000](#) [9101-9573-002](#) [910A205F](#) [9130-9573-002](#) [PL11SC-026](#) [PL375-33](#) [PL40-5](#) [PL74C-221](#) [PL75MC-217](#) [PL803-7](#) [980-8666-005](#) [1200690078](#) [1-201144-1](#) [R107003010W](#) [R110A172100](#)