

5

4

3

2

1

受控 CONTROLLED DOCUMENT

| | | | | | |
|-----------|--------------|-----------|----|------------------|-----------|
| 编号 P/N | 32-2900-CUST | 版本 Rev | 01 | 日期 Rel'd Date | SEP 17,09 |
|-----------|--------------|-----------|----|------------------|-----------|

Description: See Table I
 Part No: See Table I
 Application: RJ45 Boot
 Crimp Tool: N/A
 Impedance: N/A
 Frequency Range: N/A
 Material: Boot PVC
 RoHS Compliance: Yes
 Technical Detail: N/A



DRAWING NO.
32-2900-XX-CUST(SEE TABLE I)

REVISIONS

| | | | | |
|----|------------------|--------|--------|--------|
| 01 | OFFICIAL RELEASE | | | |
| | 08-05-09 | Y U | Y U | T H |

Betty 2009.05.16 14:02:09 +0800

D

D

C

C

B

B

A

A

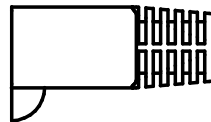
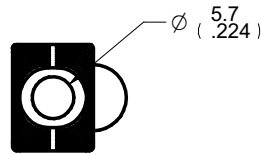
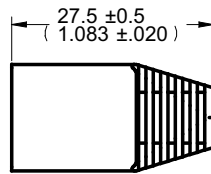
DIM OUTLINE

TABLE I

| PART NUMBER | DESCRIPTION |
|-------------|-------------------------------|
| 32-2900WH | RJ45 MOD PLUG RND BOOT, WHITE |
| 32-2900RE | RJ45 MOD PLUG RND BOOT, RED |
| 32-2900GN | RJ45 MOD PLUG RND BOOT, GREEN |
| 32-2900BU | RJ45 MOD PLUG RND BOOT, BLUE |
| 32-2900BK | RJ45 MOD PLUG RND BOOT, BLACK |

| | | | |
|--------------------------------------|--------|-----------------------|------------------|
| TOLERANCE UNLESS OTHERWISE SPECIFIED | | DRAWN BY IVON.W | DATE 08-05-09 |
| DECIMALS | mm | CHECKED BY IVON.W | DATE 08-05-09 |
| X | ± 0.5 | APPROVED BY THOMAS | DATE 08-05-09 |
| X.X | ± 0.3 | U/M | mm |
| X.XX | ± 0.1 | | |
| ANGLES | ± 0.5° | | |



TITLE
RJ45 MOD PLUG RND
BOOT, WHITE(SEE TABLE I)

SHEET 1 OF 1
DRAWING NO.
32-2900-XX-CUST
(SEE TABLE I)

SIZE
A

CUSTOMER COPY

THIS DRAWING WAS PRODUCED BY COMPUTER,
DO NOT SCALE DRAWING OR UPDATE MANUALLY.

5

4

3

2

1

X-ON Electronics

Largest Supplier of Electrical and Electronic Components

Click to view similar products for [Modular Connectors / Ethernet Connectors](#) category:

Click to view products by [Bel Fuse](#) manufacturer:

Other Similar products are found below :

[8949-H88/06BLKA/SN](#) [74441-0010/BKN](#) [MP1010RX-1000](#) [MP44RX-1000](#) [PHJ-4P4C-1-V-4](#) [PHP-6P6C-5](#) [GAX-3-66](#) [GAX-8-62](#) [GDCX-PA-66-50](#) [GDCX-PN-64](#) [GDCX-PN-66](#) [GDCX-PN-66-50](#) [GDLX-A-66](#) [GDLX-N-66](#) [GDLX-S-66](#) [GDLX-S-88K](#) [GDLX-SMT-S-88](#) [GDTX-S-88-50](#) [GDX-PA-1010](#) [GLX-N-1010M-BLK](#) [GLX-S-88M-BLK](#) [GMX-N-1010](#) [GMX-S-1010](#) [GMX-S-66](#) [GMX-SMT4-N-88](#) [GPX-2-64](#) [GSGX-N-2-88](#) [GSGX-N-4-88](#) [GSX-NS2-88-3.05](#) [GSX-NS2-88-3.05-50](#) [GSX-NS-88-3.05-50](#) [PT-108A-8C-UL](#) [PT-J951-8C](#) [PTS-J531-8CS-50UL](#) [1-1775629-2](#) [A-2014-0-4](#) [GWLX-S-88-GR](#) [GWLX-S9-88-YG](#) [DC-1021-8-WH-6](#) [1300530003](#) [1324640-4](#) [RJ11FTVC2G](#) [RJ11FTVC2N](#) [RJFTVX2SA1G](#) [132764-001](#) [1413235](#) [MP88X-1000](#) [MPS88RX-5000](#) [E5288-S000K3-L](#) [E5908-15A242-L](#)