

DESCRIPTION: CAT5E, RJ45 (8P8C) MODULAR PLUG, UNSHIELDED, OFF-SET,  
SOLID/STRANDED, FLAT/OVAL OR ROUND CABLE

MODEL NUMBER: 32-5998EUL

APPLICATION: MODULAR PLUG

CURRENT/VOLTAGE: 30 VAC/ 42 VDC AT 1.5 AMPS

CONTACT RESISTANCE: 10 MILLIOHMS MAX

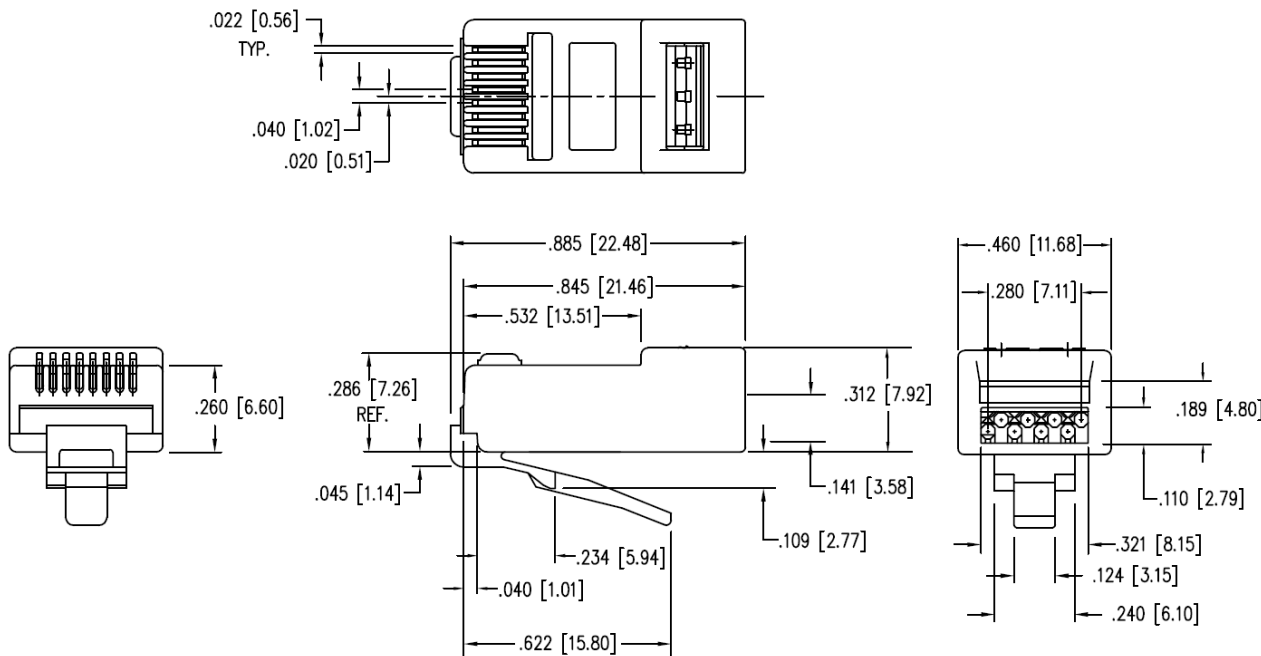
FREQUENCY RANGE: N/A

MATERIAL: HOUSING POLYCARBONATE  
CONTACT PHOSPHOR BRONZE GOLD PLATED

RoHS COMPLIANCE: YES

TECHNICAL DETAIL: N/A

COMPLIES WITH ANSI/TIA-1096-A REQUIREMENTS.



<p>EMERSON Network Power Connectivity Solutions</p> <p><small>This PROPRIETARY Document is property of Emerson Network Power, Connectivity Solutions. It is confidential, non-transferable, and issued with the clear understanding that it is not tracked or copied without permission and is retrievable upon demand.</small></p> <p>INTERPRET DRAWING IN ACCORDANCE WITH ASME Y14.5-2009.</p>	<p>3RD ANGLE PROJECTION</p>	<h2>AIM-Cambridge</h2>
	<p>RoHS <input checked="" type="checkbox"/></p> <p>2002/95/EC</p> <p>UNLESS OTHERWISE SPECIFIED UNITS: INCH</p> <p>.XX ±.02 .XXX ±.005 ANGLES ±2°</p>	<p>Title: CAT5E, RJ45 (8P8C) Modular Plug, Unshielded, Off-set, Solid/Stranded, Flat/Oval or Round Cable</p> <p>Model No. 32-5998EUL</p>
	<p>Size A</p> <p>DO NOT SCALE DRAWING</p>	<p>Date: 8/24/2013</p> <p>Sheet 1 of 1</p>

## X-ON Electronics

Largest Supplier of Electrical and Electronic Components

*Click to view similar products for [Modular Connectors / Ethernet Connectors](#) category:*

*Click to view products by [Bel Fuse](#) manufacturer:*

Other Similar products are found below :

[8949-H88/06BLKA/SN](#) [74441-0010/BKN](#) [MP1010RX-1000](#) [MP44RX-1000](#) [PHJ-4P4C-1-V-4](#) [PHP-6P6C-5](#) [GAX-3-66](#) [GAX-8-62](#) [GDCX-PA-66-50](#) [GDCX-PN-64](#) [GDCX-PN-66](#) [GDCX-PN-66-50](#) [GDLX-A-66](#) [GDLX-N-66](#) [GDLX-S-66](#) [GDLX-S-88K](#) [GDLX-SMT-S-88](#) [GDTX-S-88-50](#) [GDX-PA-1010](#) [GLX-N-1010M-BLK](#) [GLX-S-88M-BLK](#) [GMX-N-1010](#) [GMX-S-1010](#) [GMX-S-66](#) [GMX-SMT4-N-88](#) [GPX-2-64](#) [GSGX-N-2-88](#) [GSGX-N-4-88](#) [GSX-NS2-88-3.05](#) [GSX-NS2-88-3.05-50](#) [GSX-NS-88-3.05-50](#) [PT-108A-8C-UL](#) [PT-J951-8C](#) [PTS-J531-8CS-50UL](#) [1-1775629-2](#) [A-2014-0-4](#) [GWLX-S-88-GR](#) [GWLX-S9-88-YG](#) [DC-1021-8-WH-6](#) [1300530003](#) [1324640-4](#) [RJ11FTVC2G](#) [RJ11FTVC2N](#) [RJFTVX2SA1G](#) [132764-001](#) [1413235](#) [MP88X-1000](#) [MPS88RX-5000](#) [E5288-S000K3-L](#) [E5908-15A242-L](#)