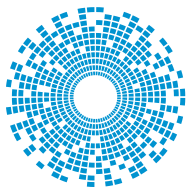


Stewart Connector Modular Plugs Selection Guide



stewart
CONNECTOR
a bel group

belfuse.com/stewart-connector

CAT6A Modular Plugs

							Low to Mid Volume	Mid to High Volume				
	Part Number	Cable Crimp Style	Strain Relief Boot	Optional Strain Relief Boot	Cable Diameter	Conductor Diameter	Installer Hand Tool Kit	Production Die Set	Production Tools (Select one)			
									Hand Crimp Tool	or	Pneumatic Crimp Tool	
UTP	SS-39100-030	Standard	Not Included	39100-874 (Slimline)	.235" Max [5.97 mm Max]	.033" - .038" [0.838 mm - 0.965 mm]	2990003-01	2905014-01	used with	2940231-01	or	2940252-01
	SS-39100-028	Standard	Slimline Included		.235" Plug / .300" Boot Max [5.97 mm Plug / 7.62 mm Boot Max]	.033" - .038" [0.838 mm - 0.965 mm]	2990003-01	2905014-01	used with	2940231-01	or	2940252-01
	SS-39100-031	Standard	Slimline Included		.235" Plug / .300" Boot Max [5.97 mm Plug / 7.62 mm Boot Max]	.037" - .042" [0.940 mm - 1.067 mm]	2990003-01	2905014-01	used with	2940231-01	or	2940252-01
FTP	SS-39200-044	Standard	Not Included	39100-888 (Slimline)	.210" Max [5.33 mm Max]	.025" - .030" [0.635 mm - 0.762 mm]	2990003-01	2905014-01	used with	2940231-01	or	2940252-01
	SS-39200-055	Standard	Slimline Included		.210" Max [5.33 mm Max]	.028" - .033" [0.711 mm - 0.838 mm]	2990003-01	2905014-01	used with	2940231-01	or	2940252-01
	SS-39200-020	Rear	Slimline Included		.220" - .240" [5.59 mm - 6.10 mm]	.037" - .042" [0.940 mm - 1.067 mm]	N/A	2980070-01	Hand Crimp tool included in kit / Pneumatic crimp tool not available			
	SS-39200-021	Rear	Not Included	39200-872 (Slimline)	.220" - .240" [5.59 mm - 6.10 mm]	.037" - .042" [0.940 mm - 1.067 mm]	N/A	2980070-01				
	SS-39200-022	Rear	Slimline Included		.230" - .250" [5.84 mm - 6.35 mm]	.037" - .042" [0.940 mm - 1.067 mm]	N/A	2980075-01				
	SS-39200-023	Rear	Not Included	39200-872 (Slimline)	.230" - .250" [5.84 mm - 6.35 mm]	.037" - .042" [0.940 mm - 1.067 mm]	N/A	2980075-01				
	SS-39200-043	Rear	Slimline Included		.232" - .248" [5.90 mm - 6.30 mm]	.042" - .048" [1.067mm - 1.220mm]	N/A	2980075-01				
	SS-39200-024	Rear	Slimline Included		.230" - .250" [5.84 mm - 6.35 mm]	.033" - .038" [0.838 mm - 0.965 mm]	N/A	2980075-01				
	SS-39200-026	Standard	Not Included	39100-874 (Slimline)	.235" Max [5.97 mm Max]	.033" - .038" [0.838 mm - 0.965 mm]	2990003-01	2905014-01				
	SS-39200-035	Standard	Slimline Included		.235" Max [5.97 mm Max]	.033" - .038" [0.838 mm - 0.965 mm]	2990003-01	2905014-01	used with	2940231-01	or	2940252-01
	SS-39200-036	Standard	Slimline Included		.235" Max [5.97 mm Max]	.037" - .042" [0.940 mm - 1.067 mm]	2990003-01	2905014-01	used with	2940231-01	or	2940252-01
	SS-39200-037	Standard	Not Included	39100-874 (Slimline)	.235" Max [5.97 mm Max]	.037" - .042" [0.940 mm - 1.067 mm]	2990003-01	2905014-01	used with	2940231-01	or	2940252-01
	SS-39200-053	Rear	Slimline Included		.270" - .295" [6.86 mm - 7.49 mm]	.033" - .038" [0.838 mm - 0.965 mm]	N/A	2980078-01	Hand Crimp tool included in kit / Pneumatic crimp tool not available			
	SS-39200-025	Rear	Not Included	39200-883 (Slimline)	.270" - .295" [6.86 mm - 7.49 mm]	.037" - .042" [0.940 mm - 1.067 mm]	N/A	2980078-01				
	SS-39200-034	Rear	Slimline Included		.270" - .295" [6.86 mm - 7.49 mm]	.037" - .042" [0.940 mm - 1.067 mm]	N/A	2980078-01				
SS-39200-030	Rear	Slimline Included		.270" - .295" [6.86 mm - 7.49 mm]	.042" - .048" [1.067 mm - 1.220 mm]	N/A	2980078-01					

CAT6 Modular Plugs

							Low to Mid Volume	Mid to High Volume				
	Part Number	Cable Crimp Style	Strain Relief Boot	Optional Strain Relief Boot	Cable Diameter	Conductor Diameter	Installer Hand Tool Kit	Production Die Set	Production Tools (Select one)			
									Hand Crimp Tool	or	Pneumatic Crimp Tool	
UTP	SS-39100-039	Standard	Slimline Included	-	.160" Max [4.06 mm Max]	.025" - .030" [0.635 mm - 0.762 mm]	2990003-01	2905014-01	used with	2940231-01	or	2940252-01
	SS-39100-049	Standard	Not Included	39100-888 (Slimline)	.207" Max [5.26 mm Max]	.028" - .033" [0.711 mm - 0.838 mm]	2990003-01	2905014-01	used with	2940231-01	or	2940252-01
	SS-39100-021	Standard	Not Included	450-024	.235" Max [5.97 mm Max]	.037" - .042" [0.940 mm - 1.067 mm]	2990003-01	2905014-01	used with	2940231-01	or	2940252-01
	SS-39100-029	Standard	Not Included	39100-874 (Slimline)	.235" Max [5.97 mm Max]	.037" - .042" [0.940 mm - 1.067 mm]	2990003-01	2905014-01	used with	2940231-01	or	2940252-01
FTP	SS-39200-012	Rear	Not Included	39200-872 (Slimline)	.220" - .240" [5.59 mm - 6.10 mm]	.037" - .042" [0.940 mm - 1.067 mm]	N/A	2980070-01	Hand Crimp tool included in kit / Pneumatic crimp tool not available			
	SS-39200-011	Rear	Included	-	.232" - .248" [5.90 mm - 6.30 mm]	.037" - .042" [0.940 mm - 1.067 mm]	N/A	2980075-01	Hand Crimp tool included in kit / Pneumatic crimp tool not available			
	SS-39200-036	Standard	Slimline Included	-	.235" Max [5.97 mm Max]	.037" - .042" [0.940 mm - 1.067 mm]	2990003-01	2905014-01	used with	2940231-01	or	2940252-01
	SS-39200-037	Standard	Not Included	39100-874 (Slimline)	.235" Max [5.97 mm Max]	.037" - .042" [0.940 mm - 1.067 mm]	2990003-01	2905014-01	used with	2940231-01	or	2940252-01
	SS-39200-010	Rear	Not Included	-	.240" - .260" [6.10 mm - 6.60 mm]	.037" - .042" [0.940 mm - 1.067 mm]	N/A	2980075-01	Hand Crimp tool included in kit / Pneumatic crimp tool not available			
	SS-39200-019	Rear	Not Included	39200-883 (Slimline)	.270" - .295" [6.86 mm - 7.49 mm]	.037" - .042" [0.940 mm - 1.067 mm]	N/A	2980078-01	Hand Crimp tool included in kit / Pneumatic crimp tool not available			



CAT5E Modular Plugs

	Part Number	Strain Relief Boot	Optional Strain Relief Boot	Cable Diameter	Conductor Diameter	Low to Mid Volume	Mid to High Volume				
						Installer Hand Tool Kit	Production Die Set		Production Tools (Select one)		
									Hand Crimp Tool	or	Pneumatic Crimp Tool
UTP	SS-37000-007	Not Included	39100-878 (Slimline)	.235" Max [5.97 mm Max]	.037" - .042" [0.940 mm - 1.067 mm]	2990003-01	2905014-01	used with	2940231-01	or	2940252-01
	SS-39100-048	Not Included	39100-874 (Slimline)	.235" Max [5.97 mm Max]	.037" - .042" [0.940 mm - 1.067 mm]	2990003-01	2905014-01	used with	2940231-01	or	2940252-01
	SS-37000-009	Not Included	39100-878 (Slimline)	.235" Max [5.97 mm Max]	.042" - .048" [1.067 mm - 1.220 mm]	2990003-01	2905014-01	used with	2940231-01	or	2940252-01
FTP	SS-39200-054	Not Included	39100-874 (Slimline)	.235" Max [5.97 mm Max]	.037" - .042" [0.940 mm - 1.067 mm]	2990003-01	2905014-01	used with	2940231-01	or	2940252-01
	SS-37200-028	Not Included	450-024	.235" Max [5.97 mm Max]	.037" - .042" [0.940 mm - 1.067 mm]	2990003-01	2905014-01	used with	2940231-01	or	2940252-01

Telcom Modular Plugs

Part Number	Contacts / Positions	Performance	Strain Relief Boot	Optional Strain Relief Boot	Cable Diameter	Conductor Diameter	Low to Mid Volume	Mid to High Volume				
							Installer Hand Tool Kit	Production Die Set		Production Tools (Select one)		
										Hand Crimp Tool	or	Pneumatic Crimp Tool
940-SP-3044R	4/4	Cat3	Not Available		.135" Max [3.43 mm Max]	.032" - .037" [0.813 mm - 0.940 mm]	2990001-01	2905001-01	used with	2940231-01	or	2940252-01
940-SP-3046R	4/6	Cat3	Not Available		.135" Max [3.43 mm Max]	.032" - .037" [0.813 mm - 0.940 mm]	2990002-01	2905002-01	used with	2940231-01	or	2940252-01
940-SP-3066R	6/6	Cat3	Not Available		.135" Max [3.43 mm Max]	.032" - .037" [0.813 mm - 0.940 mm]	2990002-01	2905008-01	used with	2940231-01	or	2940252-01
940-SP-301010R	10/10	Cat3	Not Included	450-024	.220" Max [5.59 mm Max]	.032" - .037" [0.813 mm - 0.940 mm]	2990007-01	2905010-01	used with	2940231-01	or	2940252-01
940-SP-3088R-A133	8/8	Cat5	Not Included	450-024	.220" Max [5.59 mm Max]	.035" - .040" [0.890 mm - 1.020 mm]	2990003-01	2905005-01	used with	2940231-01	or	2940252-01



Stewart Connector
11118 Susquehanna Trail South
Glen Rock, PA 17327-9199

+1 717.235.7512
techhelp@belf.com
belfuse.com/stewart-connector

Shields

Stewart Connector offers shielded and unshielded plugs to meet any of your cabling termination needs. Our shielded plugs are available with traditional shield to cable ground termination configurations as well as with a crimp finger design which provides additional strain relief and improved grounding.

Standard - Shielded

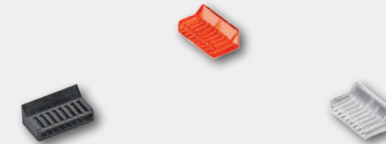


Rear Crimp - Shielded



Load Bars

Stewart Connector offers load bars to increase the ease of use during assembly and provide reliable seating of the contacts into the conductors once terminated. Stewart's load bars are available in a large range of conductor sizes to accommodate a vast majority of cables in the market today.



Wire Aligners

On some high performance designs, Stewart plug kits include wire aligners which help to consistently maintain the position of the conductors during assembly. This provides improved NEXT performance and helps to insure a repeatable plug assembly method with minimal cable assembly training or experience.



Anti-Snag Strain Relief Boots

Stewart Connector also offers a variety of anti-snag strain relief boots for our plugs. Many options are available to accommodate a wide range of cable diameters.



Stewart Connector
11118 Susquehanna Trail South
Glen Rock, PA 17327-9199

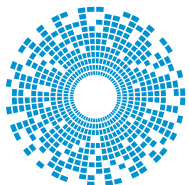
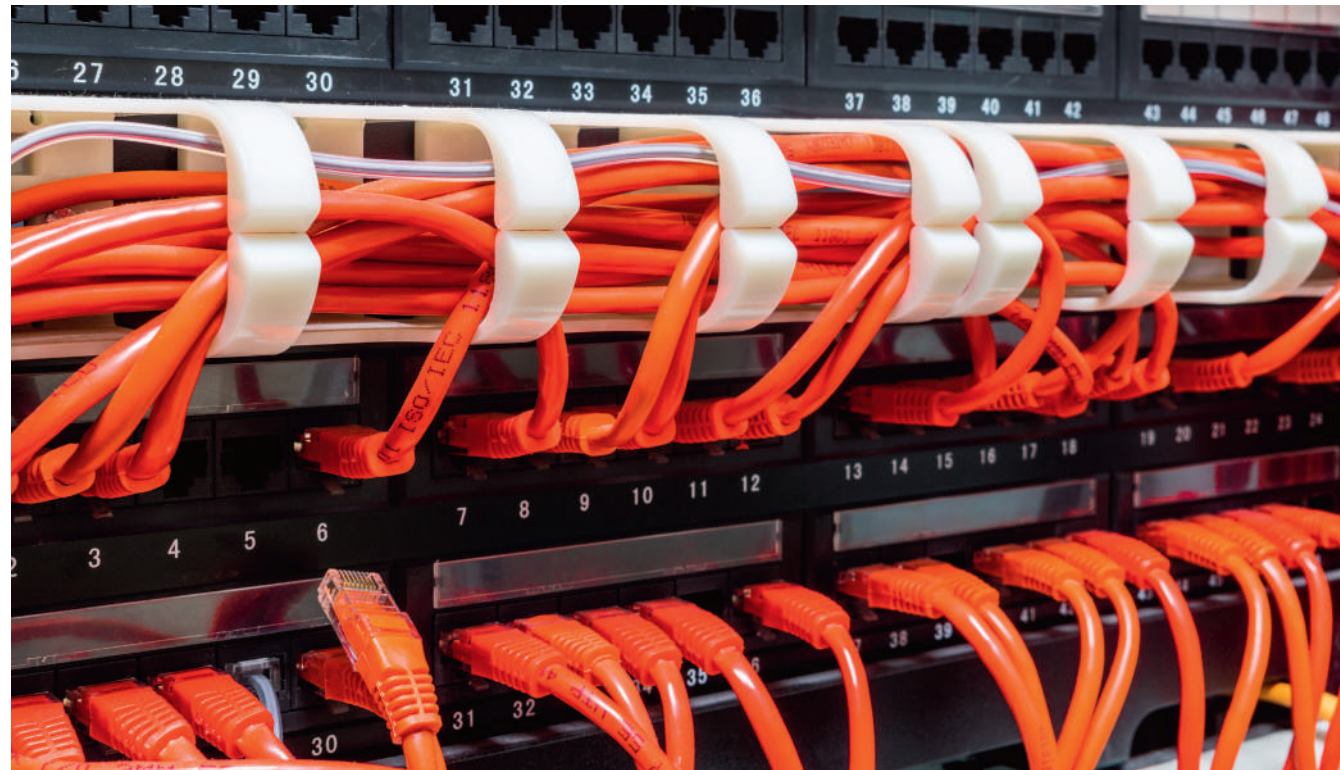
+1 717.235.7512
techhelp@belf.com
belfuse.com/stewart-connector



About Stewart Connector

Stewart Connector portfolio of products include one of the broadest ranges of Ethernet connectivity. Our interconnect products includes passive jacks, plugs and cable assemblies that provide connectivity in networking equipment. Modular plugs and cable assemblies are used within the structured cabling system, known as premise wiring.

All connector products are designed to meet current industry performance standards.



stewart
CONNECTOR
a bel group

Stewart Connector
11118 Susquehanna Trail South
Glen Rock, PA 17327-9199

+1 717.235.7512
techhelp@belf.com
belfuse.com/stewart-connector

X-ON Electronics

Largest Supplier of Electrical and Electronic Components

Click to view similar products for [Modular Connectors / Ethernet Connectors](#) category:

Click to view products by [Bel Fuse](#) manufacturer:

Other Similar products are found below :

[8949-H88/06BLKA/SN](#) [74441-0010/BKN](#) [MP1010RX-1000](#) [MP44RX-1000](#) [PHJ-4P4C-1-V-4](#) [PHP-6P6C-5](#) [GAX-3-66](#) [GAX-8-62](#) [GDCX-PA-66-50](#) [GDCX-PN-64](#) [GDCX-PN-66](#) [GDCX-PN-66-50](#) [GDLX-A-66](#) [GDLX-N-66](#) [GDLX-S-66](#) [GDLX-S-88K](#) [GDLX-SMT-S-88](#) [GDTX-S-88-50](#) [GDX-PA-1010](#) [GLX-N-1010M-BLK](#) [GLX-S-88M-BLK](#) [GMX-N-1010](#) [GMX-S-1010](#) [GMX-S-66](#) [GMX-SMT4-N-88](#) [GPX-2-64](#) [GSGX-N-2-88](#) [GSGX-N-4-88](#) [GSX-NS2-88-3.05](#) [GSX-NS2-88-3.05-50](#) [GSX-NS-88-3.05-50](#) [PT-108A-8C-UL](#) [PT-J951-8C](#) [PTS-J531-8CS-50UL](#) [1-1775629-2](#) [A-2014-0-4](#) [GWLX-S-88-GR](#) [GWLX-S9-88-YG](#) [DC-1021-8-WH-6](#) [1300530003](#) [1324640-4](#) [RJ11FTVC2G](#) [RJ11FTVC2N](#) [RJFTVX2SA1G](#) [132764-001](#) [1413235](#) [MP88X-1000](#) [MPS88RX-5000](#) [E5288-S000K3-L](#) [E5908-15A242-L](#)