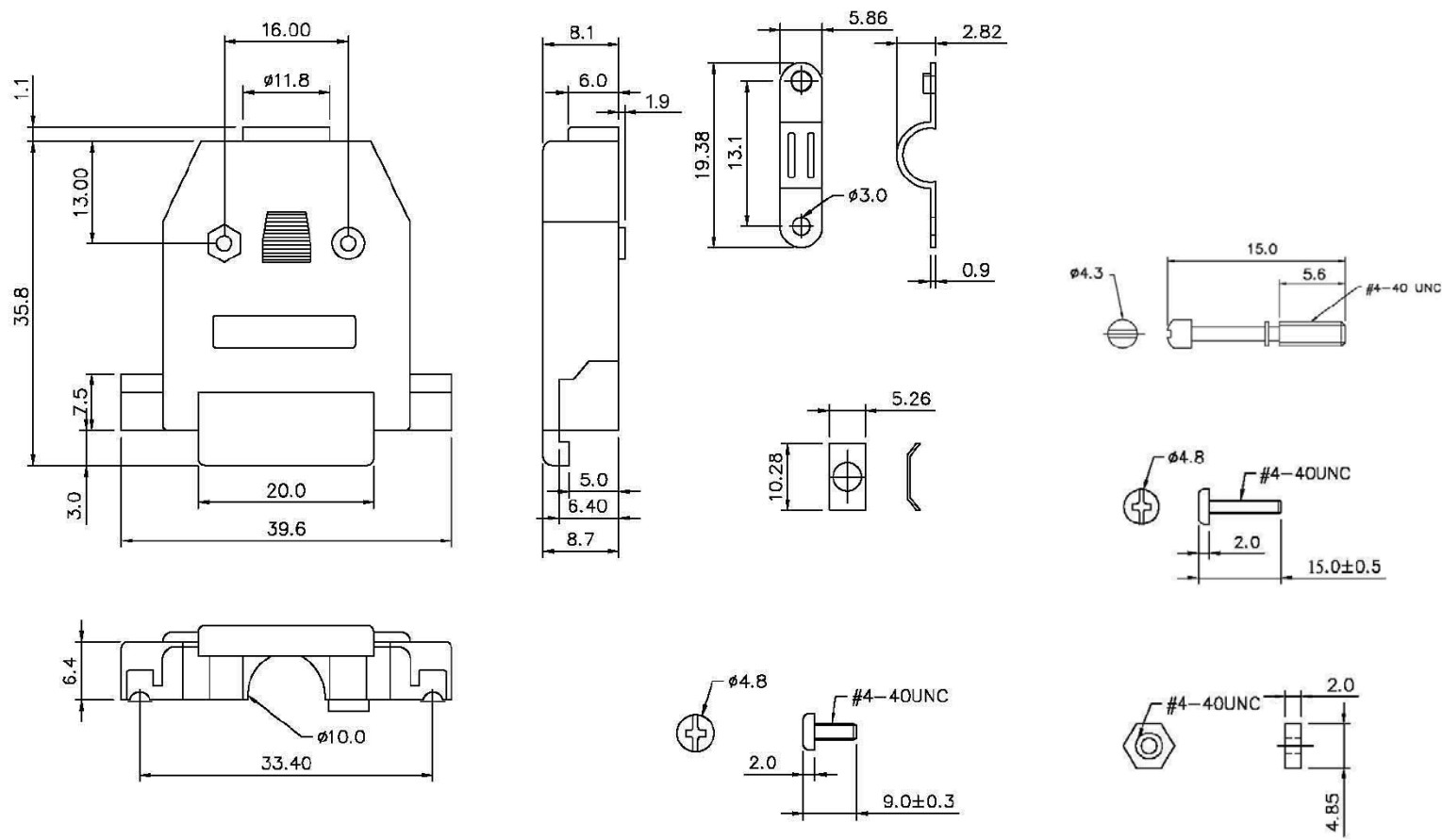


DRAWING NO.  
40-9715HS

REVISIONS

01	ENGINEERING RELEASE			
	06-13-12	Y G	Y L	M



- SPECIFICATIONS:
1. MATERIAL: ABS UL 94 HB (METALIZED PLASTIC NICKEL PLATED)
  2. PLATING: SCREW & CLIP AND OTHER, NICKEL PLATED
  3. PACKAGE: 1 SET / BAG

THIS DRAWING TO BE INTERPRETED PER ANSI Y 14.5M - 1994

COMPANY CONFIDENTIAL

TOLERANCE UNLESS OTHERWISE SPECIFIED		DRAWN BY	DATE
X		YUG EHU	06-13-12
X.X		CHECKED BY	DATE
X.XX		YUGE HU	06-13-12
X.XX		APPROVED BY	DATE
ANGLES		MA LIN	06-13-12
+ 2 °		U/M	mm

**EMERSON**  
Network Power

**Connectivity Solutions**

TITLE  
D-Sub Hood, Deluxe Metalized HS Series, 15 Pins

THIS DRAWING WAS PRODUCED BY COMPUTER, DO NOT SCALE DRAWING OR UPDATE MANUALLY.		SHEET	DRAWING NO.	SIZE
		1 OF 1	40-9715HS	C

## X-ON Electronics

Largest Supplier of Electrical and Electronic Components

*Click to view similar products for [D-Sub Backshells](#) category:*

*Click to view products by [Bel Fuse](#) manufacturer:*

Other Similar products are found below :

[M85049/6-38N](#) [M85049/86-12N03](#) [M85049/90-13P03](#) [70.350.0636.4](#) [70.350.2435.1](#) [72.350.1035.2](#) [72.352.2435.1](#) [73.359.4035.3](#) [829472-1](#)  
[PCS-E20W](#) [970-015-040R011](#) [970-025-040R011](#) [971-009-030R121](#) [971-009-040R011](#) [971-015-040R011](#) [1437013-9](#) [1484402-8](#) [156-3025-](#)  
[EX](#) [16-500800](#) [165X02659X](#) [165X03329A](#) [165X03399A](#) [165X10259X](#) [165X11759X](#) [165X11889X](#) [165X13019X](#) [165X13029X](#)  
[165X13169X](#) [165X13199X](#) [165X13239X](#) [165X13389X](#) [165X13489X](#) [165X14219X](#) [165X14449X](#) [165X17409X](#) [165X17439X](#)  
[165X17569X](#) [165X17599X](#) [165X17609X](#) [165X17889X](#) [165X17979X](#) [L171373](#) [971-025-030R121](#) [300X10989X](#) [165X02609X](#)  
[165X02639X](#) [165X02689X](#) [165X04219A](#) [165X10469X](#) [165X11279X](#)