

5

4

3

2

1

DRAWING NO.
40-9809S-CUST(SEE TABLE I)

REVISIONS

OFFICIAL RELEASE						
01	02-25-11	J	J	L	M	

Description: 98 Series crimp style panel & cable mount

D-Sub connectors

Part No: 40-9809S

Application: 98 Series D-Sub Connector

Crimp Tool: N/A

Impedance: N/A

Frequency Range: N/A

Material: Shell Steel, Nickel plated
Insulator PBT+Fiber-grass and nylon-66,
UL94-V0 Black

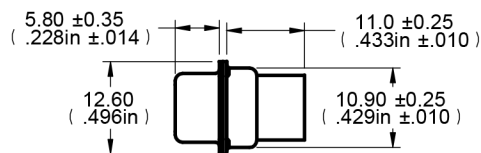
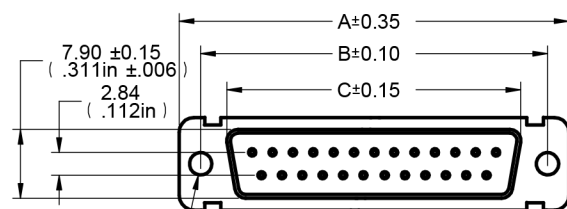
RoHS Compliance: Yes

Technical Detail: N/A



TABLE I

Part Number	Description	A (mm)	B (mm)	C (mm)	D (mm)
40-9809S	FEMALE SOCKET, CRIMP STYLE, 9-PIN	30.80	24.99	16.30	19.20
40-9815S	FEMALE SOCKET, CRIMP STYLE, 15-PIN	39.15	33.32	24.65	27.70
40-9825S	FEMALE SOCKET, CRIMP STYLE, 25-PIN	53.00	47.04	38.40	41.10
40-9837S	FEMALE SOCKET, CRIMP STYLE, 37-PIN	69.30	63.50	54.80	57.30



DIM OUTLINE

CUSTOMER COPY

TOLERANCE UNLESS OTHERWISE SPECIFIED	DRAWN BY JEAN.JIN	DATE 02-25-11
DECIMALS	CHECKED BY JEAN.JIN	DATE 02-25-11
X	± 0.5	APPROVED BY LIN.MA
X.X	± 0.3	DATE 02-25-11
X.XX	± 0.2	U/M
ANGLES	± 0.5°	mm



TITLE
98 SERIES CRIMP STYLE PANEL & CABLE
MOUNT D-SUB CONNECTORS

THIS DRAWING WAS PRODUCED BY COMPUTER,
DO NOT SCALE DRAWING OR UPDATE MANUALLY.

SHEET
1 OF 1

DRAWING NO.
40-9809S-CUST
(SEE TABLE I)

SIZE
A

5

4

3

2

1

SOLID EDGE RESISTOR.COM

X-ON Electronics

Largest Supplier of Electrical and Electronic Components

Click to view similar products for [D-Sub Standard Connectors](#) category:

Click to view products by [Bel Fuse](#) manufacturer:

Other Similar products are found below :

[56F711-015](#) [012-9507-004](#) [LV242999-142T12](#) [015-0341-000](#) [015-0349-000](#) [015-0372-005](#) [015-0372-008](#) [015-8755-001](#) [020419-0104](#) [012-0467-000](#) [012-0515-000](#) [012-9507-034](#) [012-9507-114](#) [020745-0008](#) [609-25P](#) [M24308315F](#) [CT2-14S-2PCA34](#) [CT2-18-11PCAU](#) [CT2-36-15SC](#) [CT6-14S-2SC](#) [CT6E14SA7SC](#) [CT6E22-14PC](#) [CT6E22-14PS](#) [CT6E22-22PS](#) [M83513/01-FC](#) [M85049/48-3-2F](#) [6STD09PCM99B70X](#) [6STD09SCM99B30X](#) [6STD09SCT99S40X](#) [6STD15PCT99S40X](#) [6STD15SCM99B30X](#) [6STD15SCT99S40X](#) [6STF09PCM05B70X](#) [7-135760-9](#) [MC11E-10-6SN](#) [747552-3](#) [MD1-21PS](#) [MDM-15SCBRM7-F222](#) [MDM96517-699](#) [MDM96521-744](#) [MDVB1-21SL1](#) [MIK0-1-7SH003](#) [MIKQ6-7SH076](#) [MIKQ7-7PH077](#) [MIKQ7-7PH11](#) [MIKQ7-7PH32](#) [MIKQ9-7PH003](#) [MJSV-28SL61](#) [MKJ4A1F14-55S](#) [8-135760-3](#)