

5

4

3

2

1

受控 CONTROLLED DOCUMENT

编号 P/N	40-9809M-CUST (SEE TABLE I)	版本 Rev	02	日期 Rel'd Date	Jul11,11
-----------	--------------------------------	-----------	----	------------------	----------

Description: 9 Pin Crimp Type Plug
 Part No: 40-9809M
 Application: 98 Series D-Sub Connector
 Crimp Tool: N/A
 Impedance: N/A
 Frequency Range: N/A
 Material: Shell Steel, Nickel plated
 Insulator PBT+30%Fiber-grass,UL94-V0 Black
 RoHS Compliance: Yes
 Technical Detail: N/A



DRAWING NO.
40-9809M-CUST(SEE TABLE I)

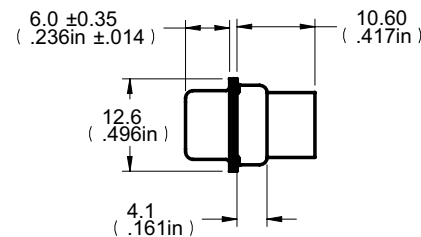
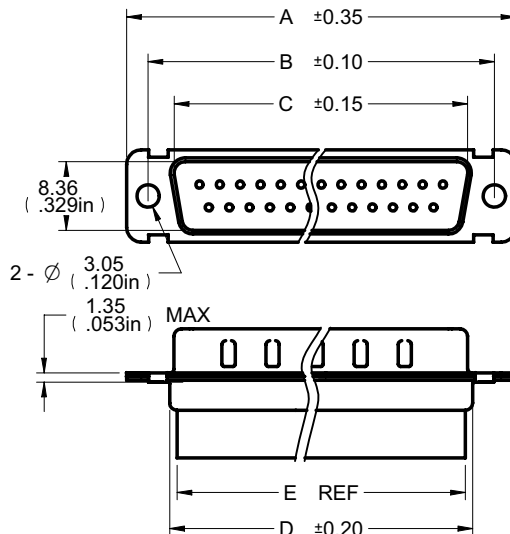
REVISIONS

01	OFFICIAL RELEASE					
	11-26-09	Y	U	Y	T	H
02	CHANGE SHELL PLATING FROM YELLOW ZINC TO NICKEL					
	10-15-10	J	U	Y	T	H


John J. ...
ECO-10-0166

TABLE I

Part Number	Description	A (mm)	B (mm)	C (mm)	D (mm)	E (mm)
40-9809M	9 Pin Crimp Type Plug	30.80	24.99	16.92	19.20	15.20
40-9815M	15 Pin Crimp Type Plug	39.15	33.32	25.25	27.70	23.70
40-9825M	25 Pin Crimp Type Plug	53.00	47.04	38.96	41.28	37.28
40-9837M	37 Pin Crimp Type Plug	69.30	63.50	55.42	57.30	53.30

**DIM OUTLINE****CUSTOMER COPY**

TOLERANCE UNLESS OTHERWISE SPECIFIED		DRAWN BY JEAN.JIN	DATE 10-15-10
DECIMALS	mm	CHECKED BY BETTY.YU	DATE 10-15-10
X	± 0.5	APPROVED BY THOMAS	DATE 10-15-10
X.XX	± 0.3		
X.XX	± 0.2		
ANGLES	± 0.5°	U/M	mm

 cinch CONNECTIVITY SOLUTIONS a bel group		TITLE	
		9 PIN CRIMP TYPE PLUG (SEE TABLE I)	
SHEET 1 OF 1	DRAWING NO. 40-9809M-CUST (SEE TABLE I)	SIZE A	

THIS DRAWING WAS PRODUCED BY COMPUTER,
DO NOT SCALE DRAWING OR UPDATE MANUALLY.

5

4

3

2

1

X-ON Electronics

Largest Supplier of Electrical and Electronic Components

Click to view similar products for [D-Sub Standard Connectors](#) category:

Click to view products by [Bel Fuse](#) manufacturer:

Other Similar products are found below :

[56F711-015](#) [012-9507-004](#) [LV242999-142T12](#) [015-0341-000](#) [015-0349-000](#) [015-0372-005](#) [015-0372-008](#) [015-8755-001](#) [020419-0104](#) [012-0467-000](#) [012-0515-000](#) [012-9507-034](#) [012-9507-114](#) [020745-0008](#) [609-25P](#) [M24308/2-23Z](#) [CT2-14S-2PCA34](#) [CT2-18-11PCAU](#) [CT2-36-15SC](#) [CT6-14S-2SC](#) [CT6E14SA7SC](#) [CT6E22-14PC](#) [CT6E22-14PS](#) [CT6E22-22PS](#) [M83513/01-FC](#) [M85049/48-3-2F](#) [6STD09PCM99B70X](#) [6STD09SCM99B30X](#) [6STD09SCT99S40X](#) [6STD15PCT99S40X](#) [6STD15SCM99B30X](#) [6STD15SCT99S40X](#) [6STF09PCM05B70X](#) [7-135760-9](#) [MC11E-10-6SN](#) [747552-3](#) [MD1-21PS](#) [MDM-15SCBRM7-F222](#) [MDM96517-699](#) [MDM96521-744](#) [MDVB1-21SL1](#) [MIK0-1-7SH003](#) [MIKQ6-7SH076](#) [MIKQ7-7PH077](#) [MIKQ7-7PH11](#) [MIKQ7-7PH32](#) [MIKQ9-7PH003](#) [MJSV-28SL61](#) [MKJ4A1F14-55S](#) [8-135760-3](#)