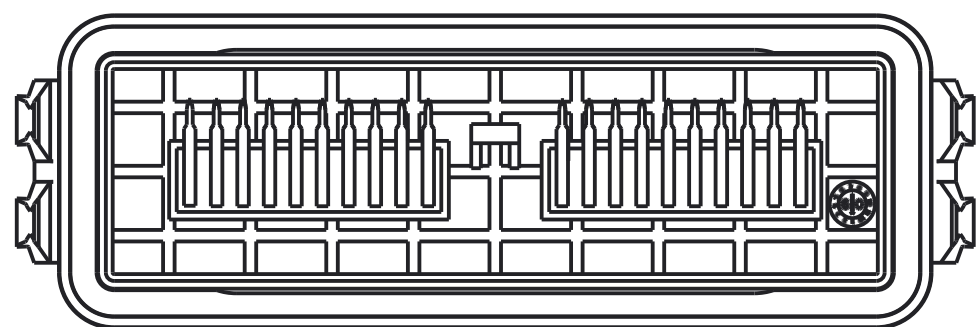
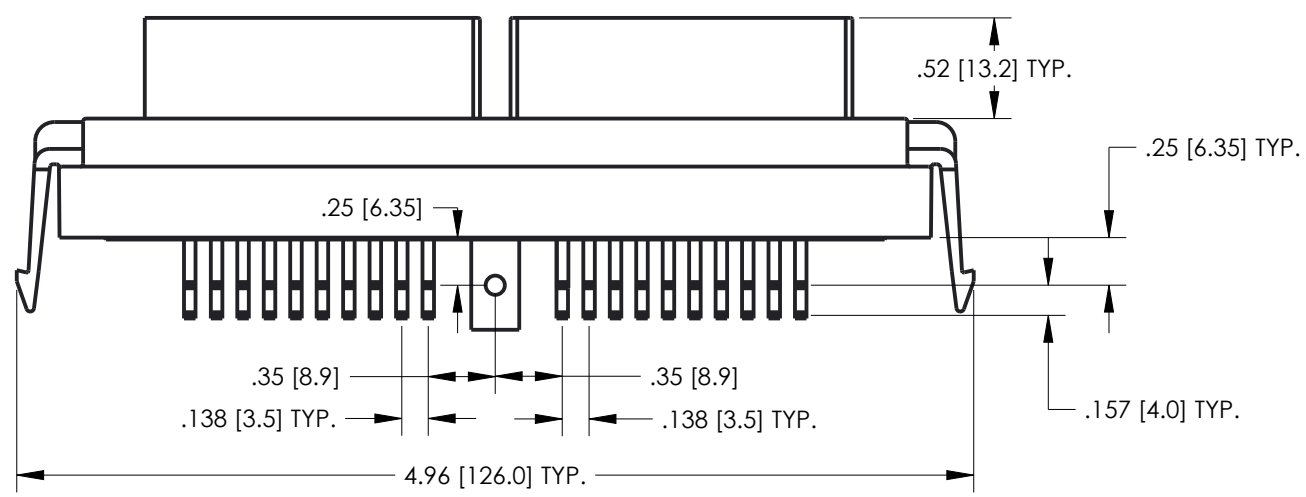
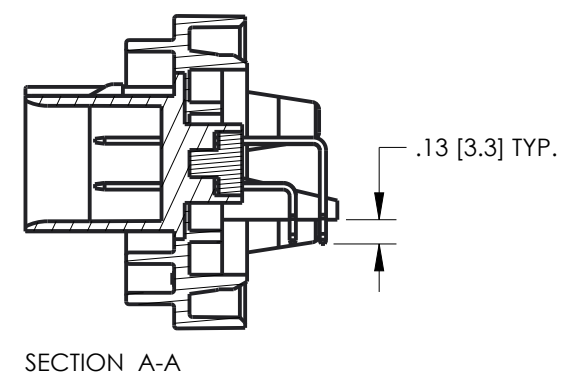
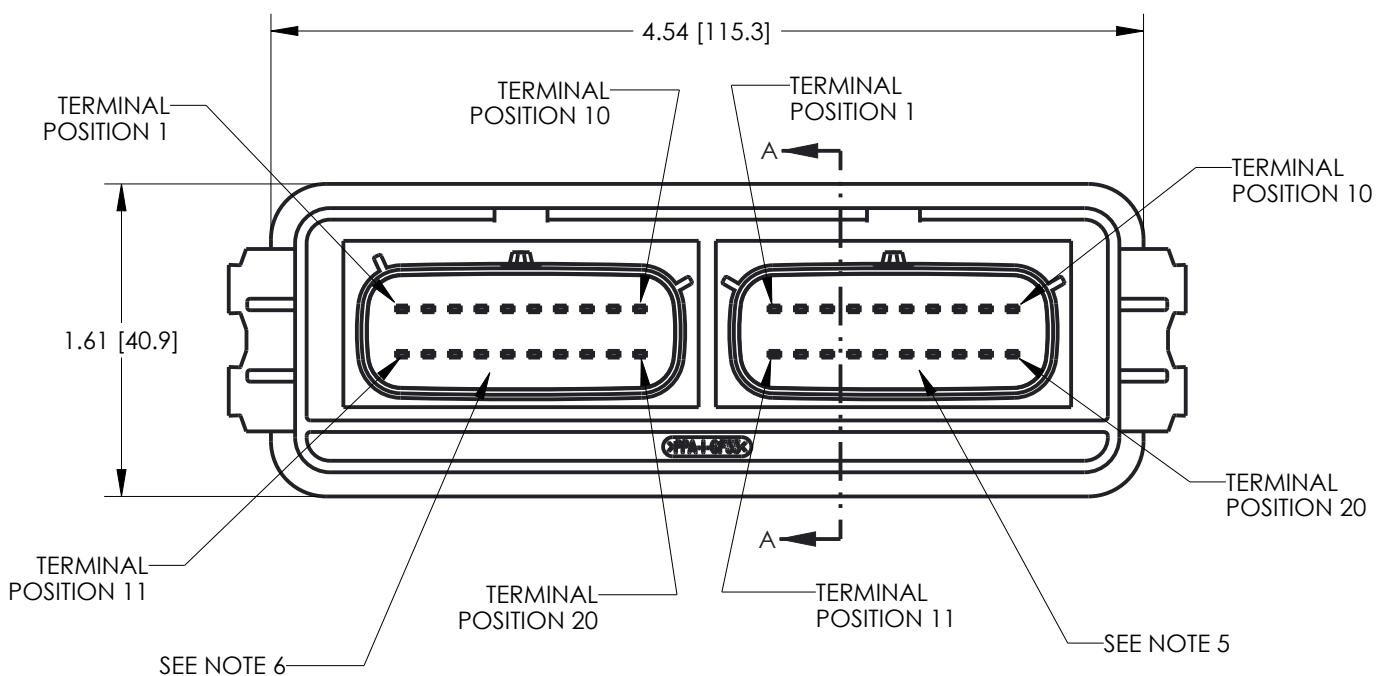


| DRAWING REVISIONS (RELEASE DATE ON FILE) | | | |
|---|----------|-----|---------------|
| REV | DOCUMENT | APP | APPROVAL DATE |
| B | CO 3274 | KR | 7/18/16 |

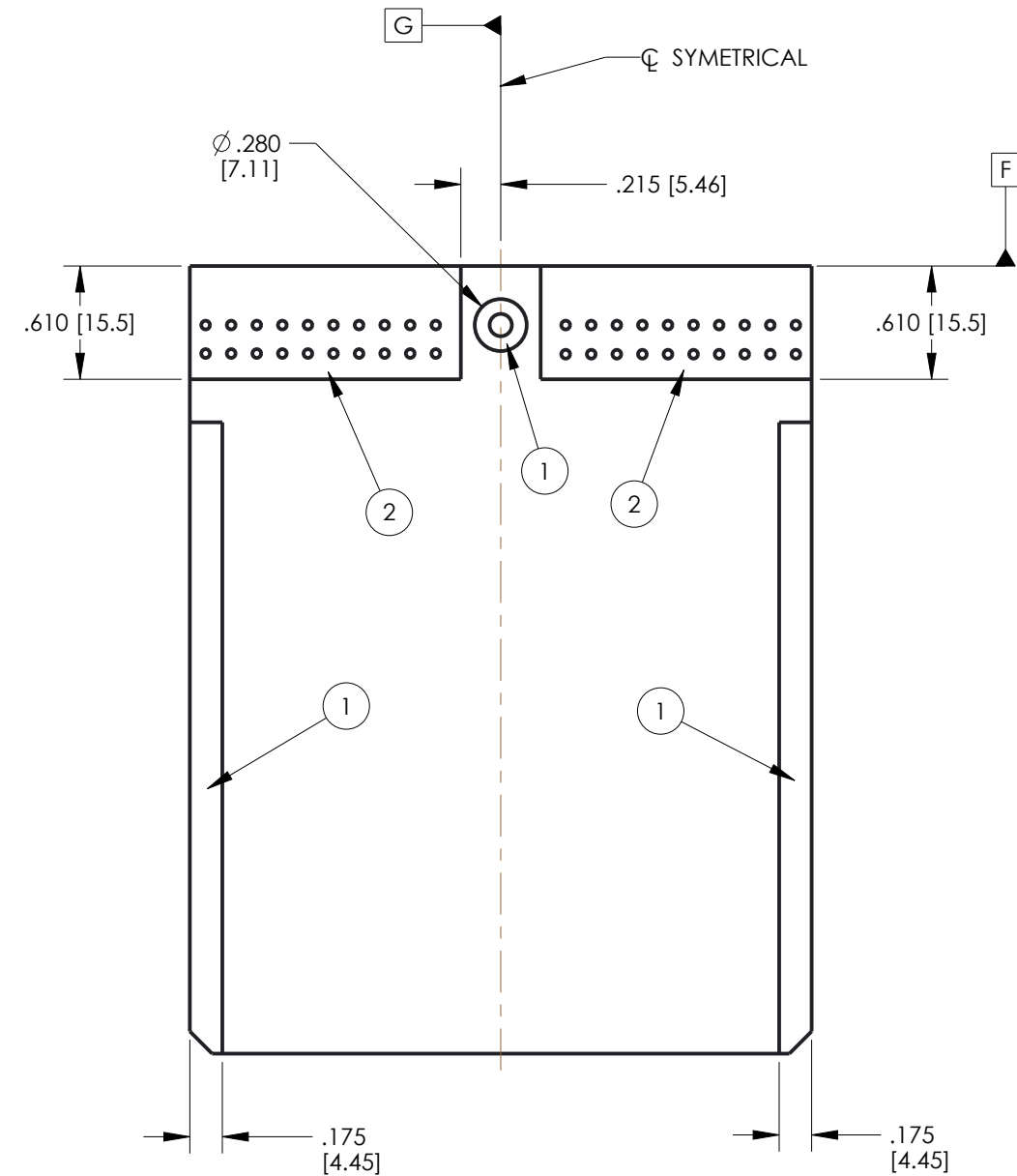
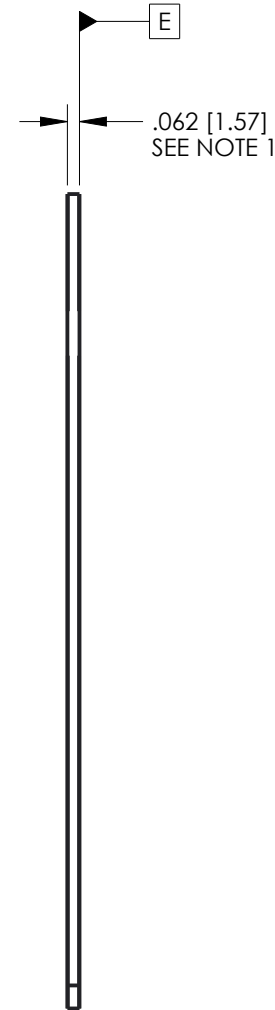
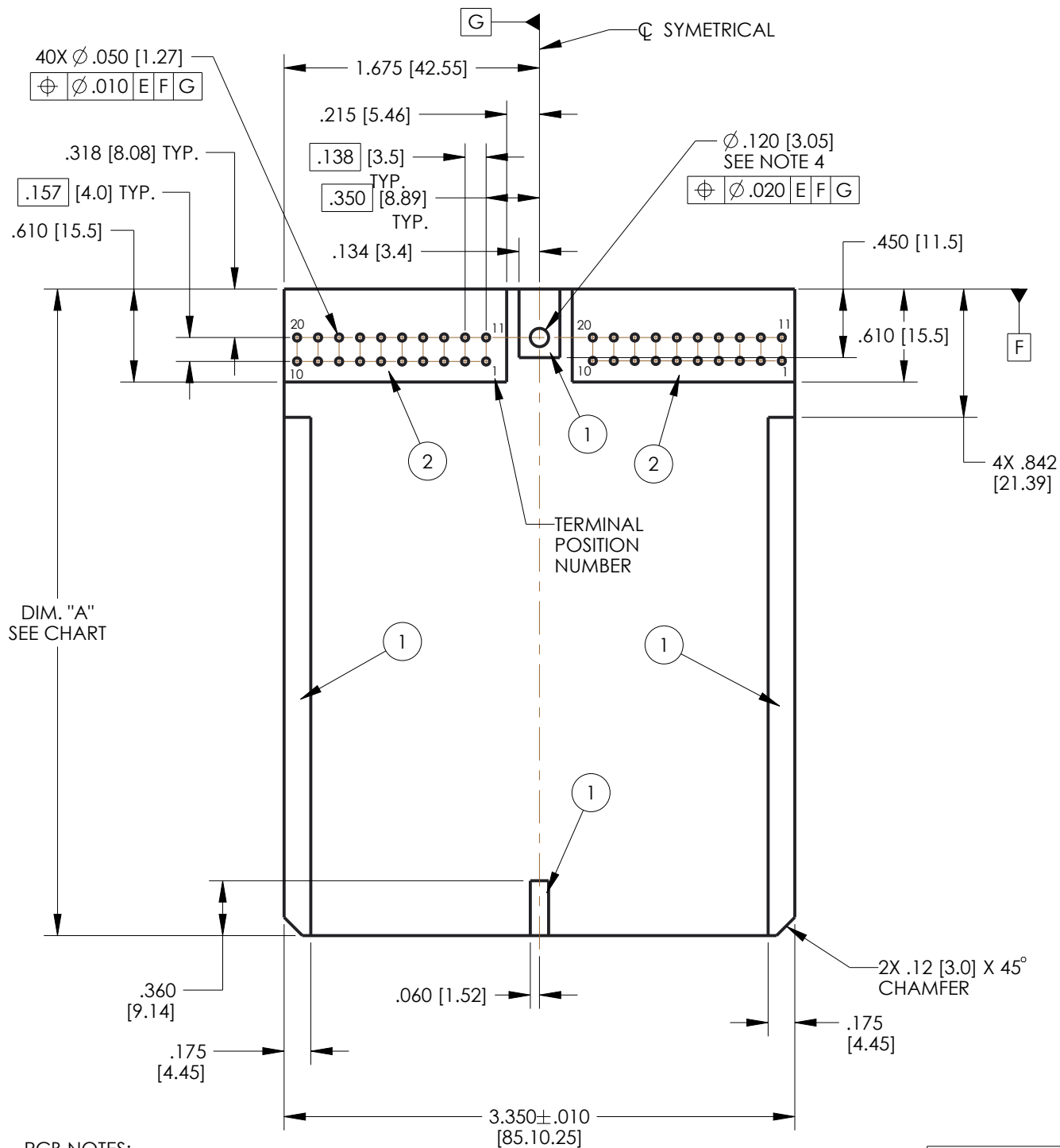


- NOTES:
- DIMENSIONS ARE IN INCHES EXCEPT DIMENSIONS INSIDE [XX] ARE IN mm. ALL DIMENSIONS ARE FOR REFERENCE ONLY.
 - MATERIALS:
HEADER INSULATOR: 30% GLASS FILLED POLYMER, COLOR BLACK.
TERMINAL BLADES: 1.5mm BRASS WITH TIN OVER NICKEL PLATING.
 - HEADERS ARE REFLOW OR WAVE SOLDERING PROCESS ROHS COMPLIANT.
 - SEE SHEET 2 FOR PCB DETAILS.
 - RIGHT SIDE MATES WITH MOLEX FEMALE CONNECTOR PART NUMBER 33472-2001 (COLOR BLACK).
 - LEFT SIDE MATES WITH MOLEX FEMALE CONNECTOR PART NUMBER 33472-2002 (COLOR GRAY).

| | | | | | |
|---|--|--|-----------------------|--|--|
| UNITS: ENGLISH INCHES | | DESIGN ENGINEER: K. ROSBOROUGH | DATE: 07/29/14 | CINCH <small>1700 FINLEY RD LOMBARD, IL. 60148</small> | |
| DO NOT SCALE DRAWING | | UNLESS OTHERWISE SPECIFIED: ALL DIMENSIONS ARE IN INCHES FILLET/RADII .02 MAX. TOLERANCES .X ± .1 .XX ± .01 .XXX ± .005 ANGULAR ± .5° | | TITLE: MODICE ME-MX 40 POSITION ASSEMBLY MATERIAL: NOTED MATERIAL SPEC NUMBER: _____ FINISH: _____ PROJECT NUMBER: A15123 | |
| CONFIDENTIAL THIS DOCUMENT IS THE PROPERTY OF CINCH. NEITHER THIS DOCUMENT NOR ANY OF THE INFORMATION CONTAINED IN IT MAY BE DUPLICATED OR DISCLOSED WITHOUT PRIOR WRITTEN CONSENT OF CINCH. ©COPYRIGHT 2014 CINCH | | APPROVALS ON FILE | | CAD FILE NUMBER: 5810140011S CAGE IDENT NO.: 71785 SIZE: B DRAWING NUMBER: 581 01 40 011 S SCALE: 1:1 SHEET 1 OF 2 | |

PCB TOP SIDE

PCB BOTTOM SIDE



PCB NOTES:

1. SUGGESTED PCB THICKNESS .062 [1.57].
2. AREAS INDICATED BY (1) ARE COMPONENT AND TRACE KEEP OUT AREAS.
3. AREAS INDICATED BY (2) ARE COMPONENT KEEP OUT AREAS.
4. SUGGESTED SCREW TO SECURE PCB TO HEADER: #4 THREAD CUTTING SCREW (TYPE 23 OR SIMILAR) TORQUED TO 2-3 IN-LBS [0.23-0.34 N-m].

RECOMMENDED PCB LENGTH

| DIM. "A" (SEE DRAWING) | USE WITH ENCLOSURE | |
|--------------------------------------|--------------------|-----------------------|
| | PART NUMBER | DESCRIPTION |
| 4.242 ± 0.015 [107.75 ± 0.38] | 581 01 30 065 | ME |
| | 581 01 30 075 | ME WITH BREATHER |
| 2.542 ± 0.015 [64.57 ± 0.38] | 581 01 30 090 | MINI ME |
| | 581 01 30 095 | MINI ME WITH BREATHER |

| | | | | | |
|--|--|--|------------------|---|-----------------|
| UNITS ENGLISH INCHES | | CINCH | | 1700 FINLEY RD LOMBARD, IL. 60148 | |
| DO NOT SCALE DRAWING | | TITLE MODICE ME-MX 40 POSITION ASSEMBLY | | | |
| UNLESS OTHERWISE SPECIFIED: ALL DIMENSIONS ARE IN INCHES | | SCALE 1:1 | | | |
| FILLET/RADIUS .02 MAX. | | TOLERANCES .X ± .1 .XX ± .01 .XXX ± .005 ANGULAR ± .5° | | DRAWING NUMBER 581 01 40 011S | |
| CONFIDENTIAL THIS DOCUMENT IS THE PROPERTY OF CINCH. NEITHER THIS DOCUMENT NOR ANY OF THE INFORMATION CONTAINED IN IT MAY BE DUPLICATED OR DISCLOSED WITHOUT PRIOR WRITTEN CONSENT OF CINCH. ©COPYRIGHT 2014 CINCH | | CAD FILE NUMBER 5810140011S | SIZE B | SCALE 1:1 | REV B |
| | | CAGE IDENT NO. 71785 | SCALE 1:1 | SHEET 2 OF 2 | |

X-ON Electronics

Largest Supplier of Electrical and Electronic Components

Click to view similar products for [Automotive Connectors](#) category:

Click to view products by [Bel Fuse](#) manufacturer:

Other Similar products are found below :

[003-018-000](#) [60403001](#) [60993906-B](#) [M902-2131](#) [M902-2161](#) [M902-2344](#) [72.330.1035.1](#) [73.353.4028.0](#) [F119300-B](#) [F166900](#) [F258300-B](#)
[F358300-B](#) [F407400](#) [F444110](#) [F487000](#) [F509500B-B](#) [827153-1](#) [8N1515-32-24P](#) [9-1326729-8](#) [925474-1](#) [928905-1](#) [964562-4](#) [968782-1](#)
[GT17SA-8DS-HU](#) [98891-1012](#) [98947-1016](#) [12004147](#) [12004475-L](#) [12010290](#) [12015454](#) [12020219-B](#) [12041318-B](#) [12052225-L](#) [12052466](#)
[12064869](#) [12004327-B](#) [12015308](#) [12015384](#) [12015909](#) [1-21030-1](#) [12041254](#) [12041318](#) [12047946-B](#) [12047957](#) [12047957-L](#) [12059473](#)
[12066261](#) [12110546](#) [12110546-B](#) [12131792](#)