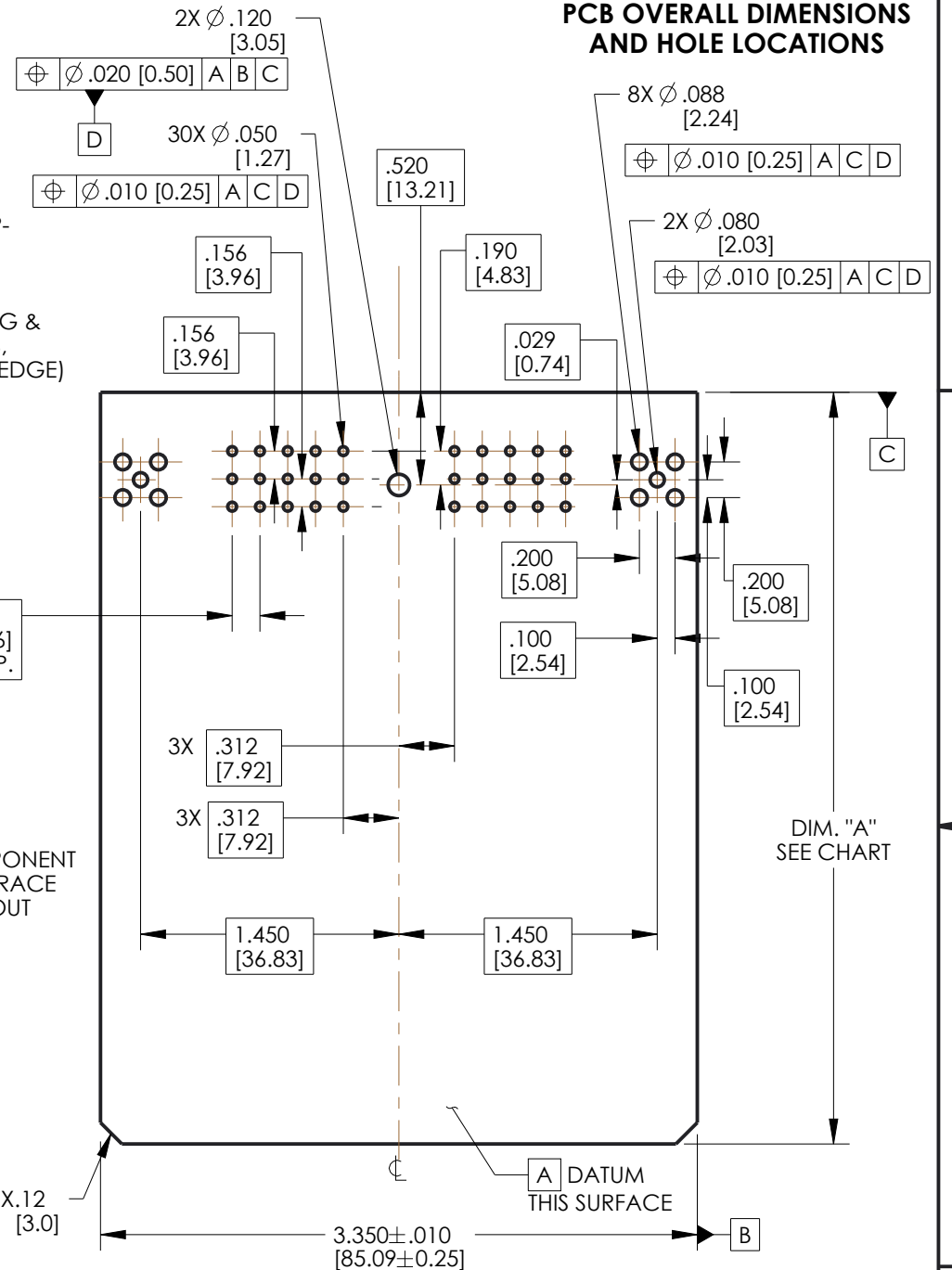
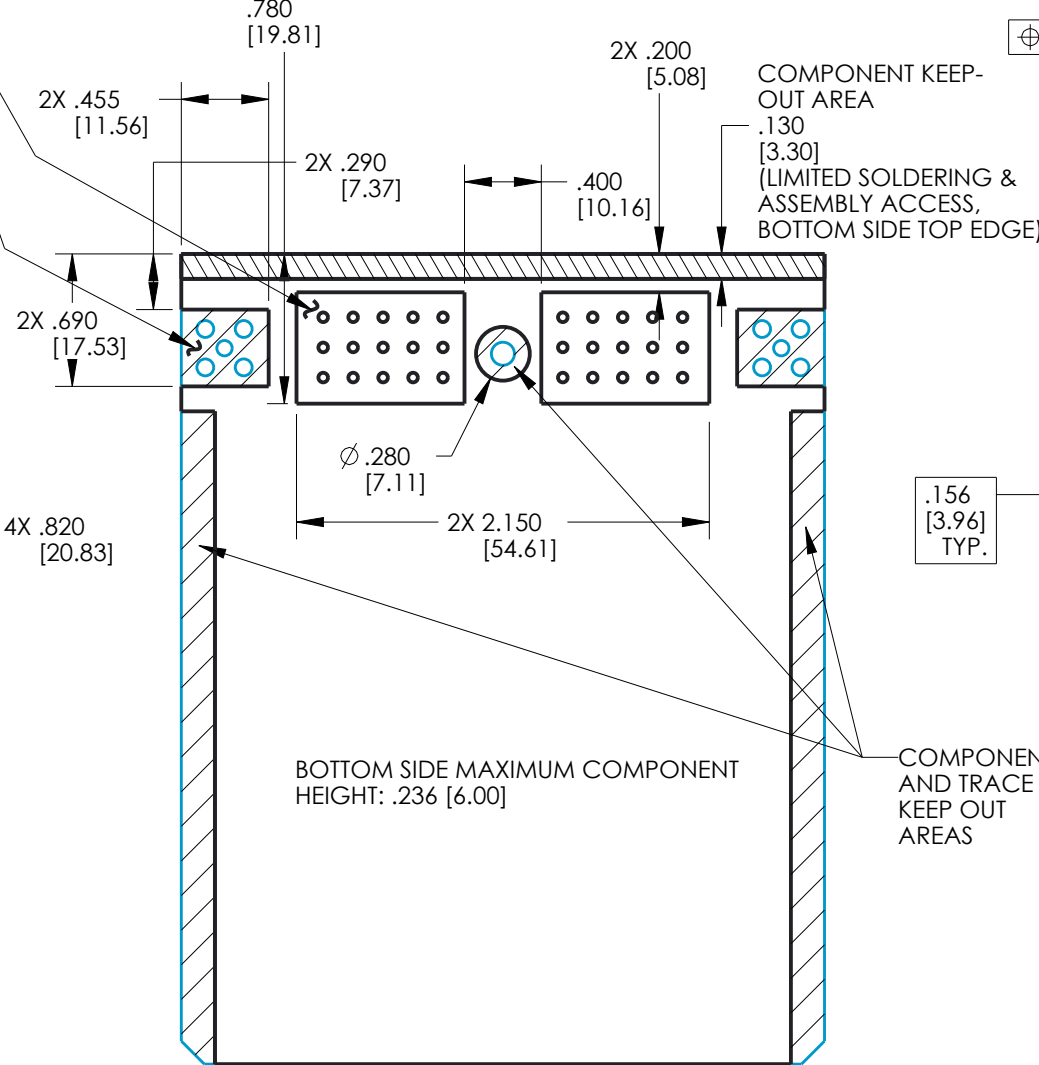
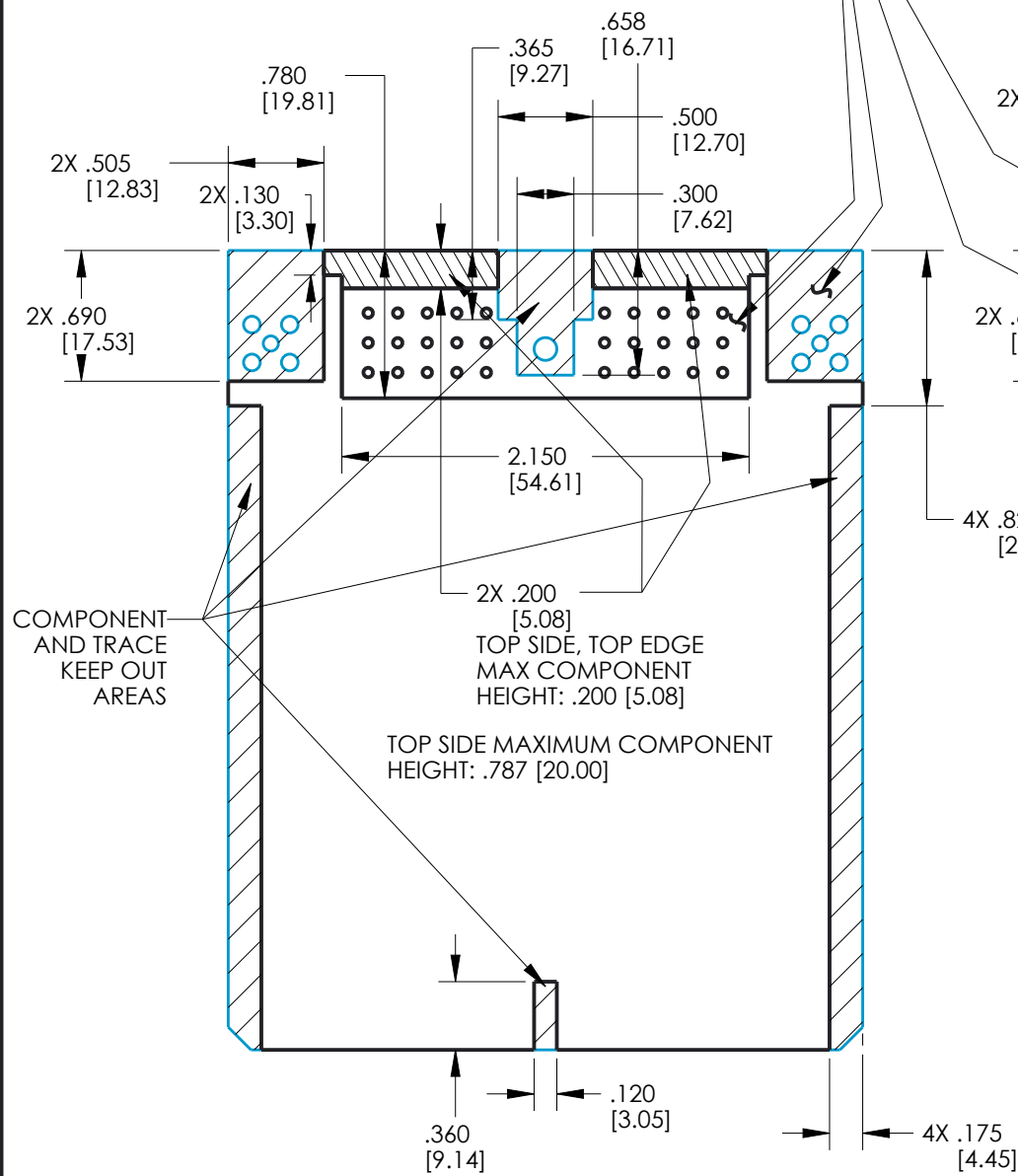


RECOMMENDED PCB TOP SIDE GENERAL ZONING AND KEEP-OUT AREAS

RECOMMENDED PCB BOTTOM SIDE GENERAL ZONING AND KEEP-OUT AREAS

RECOMMENDED PCB OVERALL DIMENSIONS AND HOLE LOCATIONS



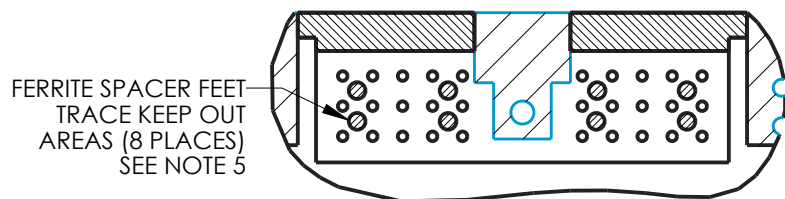
COMPONENT AND TRACE KEEP OUT AREAS

TOP SIDE MAXIMUM COMPONENT HEIGHT: .787 [20.00]

BOTTOM SIDE MAXIMUM COMPONENT HEIGHT: .236 [6.00]

COMPONENT AND TRACE KEEP OUT AREAS

DIM. "A" SEE CHART



PCB TOP SIDE PIN AREA WITH FERRITES DETAIL

RECOMMENDED PCB LENGTH

| DIM. "A" (SEE DRAWING) | USE WITH ENCLOSURE | |
|------------------------------|--------------------|-----------------------|
| | PART NUMBER | DESCRIPTION |
| 4.220±0.015 [107.19±0.38] | 581 01 30 065 | ME |
| | 581 01 30 075 | ME WITH BREATHER |
| 2.520±0.015 [64.01±0.38] | 581 01 30 090 | MINI ME |
| | 581 01 30 095 | MINI ME WITH BREATHER |

| | | | |
|--|---------------------------------------|--------------------------------------|--------------------------------------|
| UNITS ENGLISH INCHES | CINCH | | 1700 FINLEY RD LOMBARD, IL. 60148 |
| | DO NOT SCALE DRAWING | | |
| TITLE MODICE ME-RF 30 WAY / SMA HEADER ASSEMBLY | | | |
| PRO/E DRAWING | | | |
| <small>CONFIDENTIAL</small> THIS DOCUMENT IS THE PROPERTY OF CINCH. NEITHER THIS DOCUMENT NOR ANY OF THE INFORMATION CONTAINED IN IT MAY BE DUPLICATED OR DISCLOSED WITHOUT PRIOR WRITTEN CONSENT OF CINCH. ©COPYRIGHT 2008 CINCH | CAD FILE NUMBER 5810630001S | DRAWING NUMBER 5810630001S | REV E |
| | CAGE IDENT NO. 71785 | SIZE B | SCALE 1:1 |
| | SHEET 2 OF 2 | | |

X-ON Electronics

Largest Supplier of Electrical and Electronic Components

Click to view similar products for [Automotive Connectors](#) category:

Click to view products by [Bel Fuse](#) manufacturer:

Other Similar products are found below :

[003-018-000](#) [600858](#) [60403001](#) [60993906-B](#) [60993913-B](#) [629515004020001](#) [M902-2131](#) [M902-2161](#) [M902-2344](#) [72.330.1035.1](#)
[73.353.4028.0](#) [F118010](#) [F119300-B](#) [F132210](#) [F132210-B](#) [F166900](#) [F180100](#) [F258300](#) [F258300-B](#) [F294300-B](#) [F339100](#) [F339700](#) [F358300-](#)
[B](#) [F374110](#) [F407400](#) [F412210](#) [F427600](#) [F444110](#) [F487000](#) [F495100-B](#) [F500900-B](#) [F509500B-B](#) [770444-1](#) [776880-1](#) [827153-1](#) [881735-1](#)
[8N1515-32-24P](#) [9-1326727-8](#) [9-1326729-8](#) [925467-1](#) [925474-1](#) [928905-1](#) [936398-2](#) [964562-1](#) [964562-4](#) [964731-2](#) [965051-1](#) [968782-1](#)
[GT17SA-8DS-HU](#) [GT17VS-10DP-5.2CF](#)