

NOTES:

1. SPECIFICATIONS:

ELECTRICAL:  
 WITHSTANDING VOLTAGE: MINIMUM 1250 V RMS @ SEA LEVEL  
 INSULATION RESISTANCE: INITIAL 5000 MEGOHMS MAXIMUM,  
 1000 MEGOHMS MIN. AFTER ENVIRONMENTAL TESTING.  
 CONTACT RATING: 5 AMPS  
 CONTACT RESISTANCE: 2.7 MILLIOHMS MAX.

MATERIALS:

INSULATOR: WHITE UL94V-0 RATED GLASS FILLED POLYESTER  
 CONTACT: COPPER ALLOY  
 CONTACT AREA PLATING: GOLD OVER NICKEL,  
 CONNECTOR SHELL: STEEL, PLATING ZINC WITH CLEAR CHROMATE.

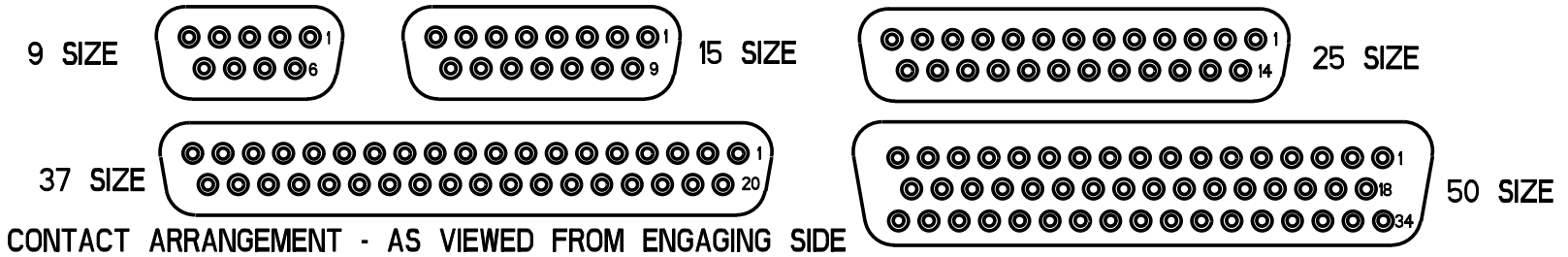
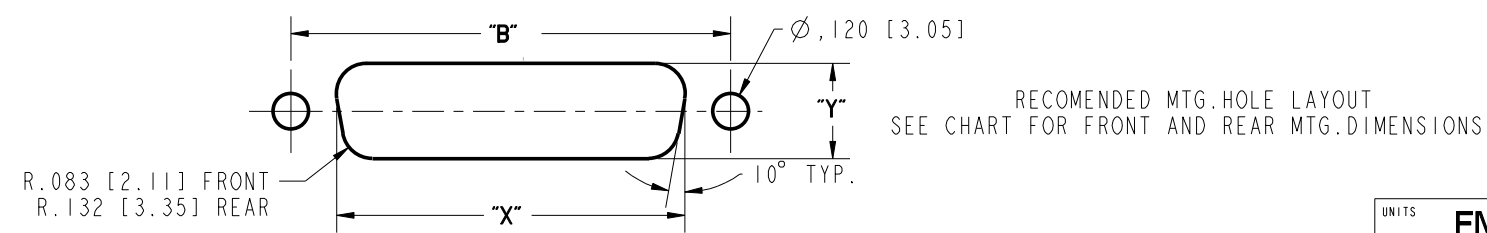
ENVIRONMENTAL:  
 OPERATING TEMPERATURE: -65°C TO +125°C

TERMINATION:  
 SOLDER POTS ACCOMODATE # 20 AWG STRANDED WIRE MAX.

2. DIMENSIONS IN [ ] ARE IN MILLIMETERS.

DRAWING REVISIONS			
REV	DOCUMENT	APP	DATE
A	DO 05-1094	AKB	1/7/06
B	ECN 06E468		

NUMBER OF POSITIONS	SELECTIVE GOLD FLASH PLATING (.120" [3.05] MTG. HOLES)		DIMENSION							FRONT MOUNTING HOLE DIMENSIONS		REAR MOUNTING HOLE DIMENSIONS	
	PART NO.	FACTORY NO.	"A"	"B"	"C"	"D"	"E"	"F"	"G"	"X"	"Y"	"X"	"Y"
9	DEH-9S	702 11 09 001	1.213 [30.81]	.984 [24.99]	.640 [16.26]	.308 [7.82]	.494 [12.55]	.759 [19.28]	.422 [10.72]	.874 [22.20]	.513 [13.03]	.806 [20.47]	.449 [11.40]
15	DAH-15S	702 11 15 001	1.541 [39.14]	1.312 [33.32]	.968 [24.59]			1.083 [27.51]		1.202 [30.53]		1.134 [28.80]	
25	DBH-25S	702 11 25 001	2.088 [53.04]	1.852 [47.04]	1.508 [38.30]			1.629 [41.38]		1.743 [44.27]		1.674 [42.52]	
37	DCH-37S	702 11 37 001	2.729 [69.32]	2.500 [64.50]	2.156 [54.76]			2.272 [57.71]		2.391 [60.73]		2.326 [59.08]	
50	DDH-50S	702 11 50 001	2.635 [66.93]	2.406 [61.11]	2.062 [52.37]			2.178 [55.32]		2.297 [58.34]		2.218 [56.34]	



**ROHS COMPLIANT**

UNITS	ENGLISH	PRO/E	Cinch		MODELED BY: V.SKUZA
DO NOT SCALE DRAWING	DRAWN BY: V.SKUZA	DATE: 06/10/05	1700 FINLEY RD LOMBARD, IL. 60148		
	DESIGN ENGINEER: A.BALI	DATE: 06/10/05	TITLE: D-SUB SOLDER CUP CONNECTOR SOCKET ASS'Y (.120" MTG HOLES)		
	DESIGN ENGINEERING MGR: A.SHAH	DATE: 07/09/05	CONTROL SPEC NUMBER		
	MFG. ENGINEERING: J.OCEGUERA	DATE: 07/07/05	MATERIAL SPEC NUMBER FINISH PROJECT NUMBER		
	QUALITY ASSURANCE: A.VAZQUEZ	DATE: 07/06/05	CAGE IDENT NO. SIZE: 71785 B		
THIS DOCUMENT IS THE PROPERTY OF CINCH. NEITHER THIS DOCUMENT NOR ANY OF THE INFORMATION CONTAINED IN IT MAY BE DUPLICATED OR DISCLOSED WITHOUT PRIOR WRITTEN CONSENT OF CINCH.			DRAWING NUMBER: DXH-XXS		
			SCALE: 1:1 SHEET 1 OF 1		

## X-ON Electronics

Largest Supplier of Electrical and Electronic Components

*Click to view similar products for [D-Sub Standard Connectors](#) category:*

*Click to view products by [Bel Fuse](#) manufacturer:*

Other Similar products are found below :

[56F711-015](#) [012-9507-004](#) [LV242999-142T12](#) [015-0341-000](#) [015-0349-000](#) [015-0372-005](#) [015-0372-008](#) [015-8755-001](#) [020419-0104](#) [012-0467-000](#) [012-0515-000](#) [012-9507-034](#) [012-9507-114](#) [020745-0008](#) [609-25P](#) [M24308315F](#) [CT2-14S-2PCA34](#) [CT2-18-11PCAU](#) [CT2-36-15SC](#) [CT6-14S-2SC](#) [CT6E14SA7SC](#) [CT6E22-14PC](#) [CT6E22-14PS](#) [CT6E22-22PS](#) [M83513/01-FC](#) [M85049/48-3-2F](#) [6STD09PCM99B70X](#) [6STD09SCM99B30X](#) [6STD09SCT99S40X](#) [6STD15PCT99S40X](#) [6STD15SCM99B30X](#) [6STD15SCT99S40X](#) [6STF09PCM05B70X](#) [7-135760-9](#) [MC11E-10-6SN](#) [747552-3](#) [MD1-21PS](#) [MDM-15SCBRM7-F222](#) [MDM96517-699](#) [MDM96521-744](#) [MDVB1-21SL1](#) [MIK0-1-7SH003](#) [MIKQ6-7SH076](#) [MIKQ7-7PH077](#) [MIKQ7-7PH11](#) [MIKQ7-7PH32](#) [MIKQ9-7PH003](#) [MJSV-28SL61](#) [MKJ4A1F14-55S](#) [8-135760-3](#)