

NOTES:

1. SPECIFICATIONS:

ELECTRICAL:  
 WITHSTANDING VOLTAGE: MINIMUM 1000 V RMS @ SEA LEVEL  
 INSULATION RESISTANCE: INITIAL 5000 MEGOHMS MAXIMUM,  
 1000 MEGOHMS MIN. AFTER ENVIRONMENTAL TESTING.  
 CONTACT RATING: 5 AMPS  
 CONTACT RESISTANCE: 2.7 MILLIOHMS MAX.

MATERIALS:  
 INSULATOR: BLACK UL94V-0 RATED GLASS FILLED NYLON  
 CONTACT(030-1953-000): COPPER ALLOY  
 CONTACT AREA PLATING: GOLD OVER NICKEL,  
 CONNECTOR SHELL: STEEL, PLATING ZINC WITH CLEAR CHROMATE.

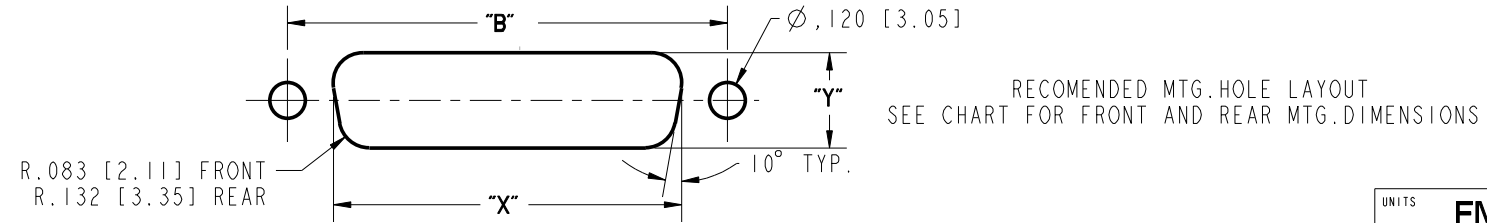
ENVIRONMENTAL:  
 OPERATING TEMPERATURE: -65°C TO +125°C

TERMINATION:  
 CRIMP WILL ACCOMMODATE # 20 TO 28 AWG WIRE.  
 TERMINATION-TOOLS:  
 CRIMP TOOL: M22520/2-01  
 INSERTION/EXTRACTION TOOL: CIET-20-HDB  
 POSITIONER: EP-580

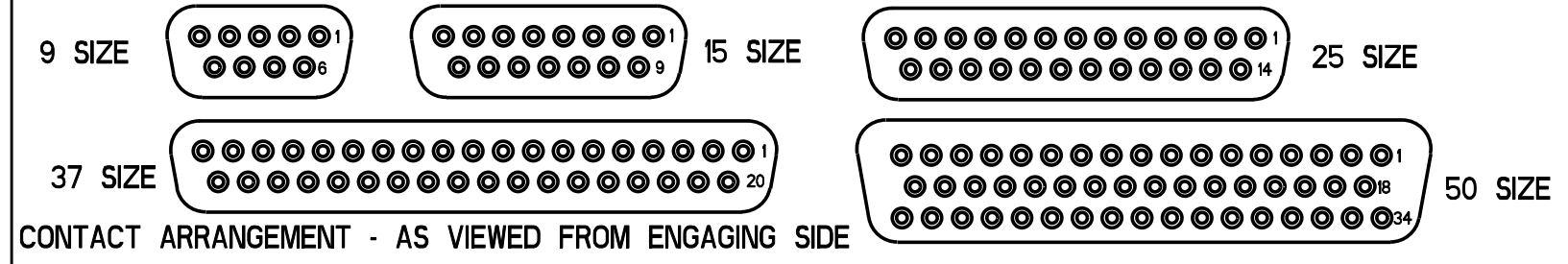
2. DIMENSIONS IN [ ] ARE IN MILLIMETERS.

DRAWING REVISIONS			
REV	DOCUMENT	APP	DATE
A	DO 05-1094	AKB	1/7/06
B	ECN 06E208		

NUMBER OF POSITIONS	SELECTIVE GOLD FLASH PLATING (.120" [3.05] MTG. HOLES)		CONTACTS	DIMENSION							FRONT MOUNTING HOLE DIMENSIONS		REAR MOUNTING HOLE DIMENSIONS																																					
	PART NO.	FACTORY NO.		"A"	"B"	"C"	"D"	"E"	"F"	"G"	"X"	"Y"	"X"	"Y"																																				
9	DEUH-9S	702 13 09 001	INCLUDED	1.213	.984	.640	.308 [7.82]	.494 [12.55]	.759 [19.28]	.422 [10.72]	.874 [22.20]	.513 [13.03]	.806 [20.47]	.449 [11.40]																																				
	DEUH-9S-FO	702 13 09 005	NOT INCLUDED	[30.81]	[24.99]	[16.26]									[19.28]	[22.20]	[20.47]																																	
15	DAUH-15S	702 13 15 001	INCLUDED	1.541	1.312	.968									.308 [7.82]	.494 [12.55]	1.083 [27.51]	.422 [10.72]	1.202 [30.53]	.513 [13.03]	1.134 [28.80]	.449 [11.40]																												
	DAUH-15S-FO	702 13 15 005	NOT INCLUDED	[39.14]	[33.32]	[24.59]																	[27.51]	[30.53]	[28.80]																									
25	DBUH-25S	702 13 25 001	INCLUDED	2.088	1.852	1.508																	.308 [7.82]	.494 [12.55]	1.625 [41.28]	.422 [10.72]	1.743 [44.27]	.513 [13.03]	1.674 [42.52]	.449 [11.40]																				
	DBUH-25S-FO	702 13 25 005	NOT INCLUDED	[53.04]	[47.04]	[38.30]																									[41.28]	[44.27]	[42.52]																	
37	DCUH-37S	702 13 37 001	INCLUDED	2.729	2.500	2.156																									.308 [7.82]	.494 [12.55]	2.272 [57.71]	.422 [10.72]	2.391 [60.73]	.513 [13.03]	2.326 [59.08]	.449 [11.40]												
	DCUH-37S-FO	702 13 37 005	NOT INCLUDED	[69.32]	[64.50]	[54.76]																																	[57.71]	[60.73]	[59.08]									
50	DDUH-50S	702 13 50 001	INCLUDED	2.635	2.406	2.062																																	.308 [7.82]	.494 [12.55]	.534 [13.56]	.422 [10.72]	2.297 [58.34]	.623 [15.82]	2.218 [56.34]	.555 [14.10]				
	DDUH-50S-FO	702 13 50 005	NOT INCLUDED	[66.93]	[61.11]	[52.37]																																									[13.56]	[58.34]	[15.82]	[56.34]



**ROHS COMPLIANT**



UNITS	ENGLISH	PRO/E	Cinch		MODELED BY: V. SKUZA
DO NOT SCALE DRAWING	DRAWN BY V. SKUZA	DATE 06/24/05	TITLE D*U SERIES CRIMP & POKE CONNECTOR SKT. ASS'Y (.120" MTG HOLES)		1700 FINLEY RD LOMBARD, IL. 60148
	DESIGN ENGINEER A. BALI	06/24/05	MATERIAL		CONTROL SPEC NUMBER
	DESIGN ENGINEERING MGR. A. SHAH	07/09/05	MATERIAL SPEC NUMBER	FINISH	PROJECT NUMBER C14740
	MFG. ENGINEERING J. OCEGUERA	07/07/05	CAD FILE NUMBER DXUH-XXS	DRAWING NUMBER <b>D*UH-XXS</b>	
	QUALITY ASSURANCE A. VAZQUEZ	07/06/05	CAGE IDENT NO.   SIZE <b>71785</b>   <b>B</b>	SCALE 1:1	SHEET 1 OF 1

THIS DOCUMENT IS THE PROPERTY OF CINCH. NEITHER THIS DOCUMENT NOR ANY OF THE INFORMATION CONTAINED IN IT MAY BE DUPLICATED OR DISCLOSED WITHOUT PRIOR WRITTEN CONSENT OF CINCH.

## X-ON Electronics

Largest Supplier of Electrical and Electronic Components

*Click to view similar products for [D-Sub Standard Connectors](#) category:*

*Click to view products by [Bel Fuse](#) manufacturer:*

Other Similar products are found below :

[56F711-015](#) [012-9507-004](#) [LV242999-142T12](#) [015-0341-000](#) [015-0349-000](#) [015-0372-005](#) [015-0372-008](#) [015-8755-001](#) [020419-0104](#) [012-0467-000](#) [012-0515-000](#) [012-9507-034](#) [012-9507-114](#) [020745-0008](#) [609-25P](#) [M24308/2-23Z](#) [M24308315F](#) [CT2-14S-2PCA34](#) [CT2-18-11PCAU](#) [CT2-36-15SC](#) [CT6-14S-2SC](#) [CT6E14SA7SC](#) [CT6E22-14PC](#) [CT6E22-14PS](#) [CT6E22-22PS](#) [M83513/01-FC](#) [M85049/48-3-2F](#) [6STD09PCM99B70X](#) [6STD09SCM99B30X](#) [6STD09SCT99S40X](#) [6STD15PCT99S40X](#) [6STD15SCM99B30X](#) [6STD15SCT99S40X](#) [6STF09PCM05B70X](#) [7-135760-9](#) [MC11E-10-6SN](#) [747552-3](#) [MD1-21PS](#) [MDM-15SCBRM7-F222](#) [MDM96517-699](#) [MDM96521-744](#) [MDVB1-21SL1](#) [MIK0-1-7SH003](#) [MIKQ6-7SH076](#) [MIKQ7-7PH077](#) [MIKQ7-7PH11](#) [MIKQ7-7PH32](#) [MIKQ9-7PH003](#) [MJSV-28SL61](#) [MKJ4A1F14-55S](#)