

RED INDICATES ORIGINAL

DWG SIZE C DATA CONTAINED IN THIS DOCUMENT IS PROPRIETARY TO TROMPETER ELECTRONICS INC. AND SHALL NOT BE DISCLOSED, COPIED OR USED FOR REPRODUCTION OF ANY KIND WITHOUT EXPRESS WRITTEN PERMISSION.

| REV | | DESCRIPTION | 12-01 | | SH 1 |
|-----|-------|---|-------|----------|------|
| REV | ECO | DESCRIPTION | DWN | APPROVED | DATE |
| J | 11191 | ADDED C.J70TL, -201 THRU -220; ADDED ITEM 34; SEE ECO | DKC | | |

| P2 CONN TYPE | FIG NO | P1 CONN TYPE | | | | | | | | | | | | | | | | | | | |
|--------------|--------|--------------|------|------|------|------|-------|------|------|------|------|------|------|------|------|------|-------|------|------|------|------|
| | | BJ20 | | | | | LBJ20 | | | | | BJ40 | | | | | LBJ40 | | | | |
| | | E1 | E2 | E3 | E4 | E5 | E1 | E2 | E3 | E4 | E5 | E1 | E2 | E3 | E4 | E5 | E1 | E2 | E3 | E4 | E5 |
| DASH NUMBERS | | | | | | | | | | | | | | | | | | | | | |
| BJ74 | 1A | -1 | -2 | -3 | -4 | -169 | -5 | -6 | -7 | -9 | -170 | -9 | -10 | -11 | -12 | -171 | -13 | -14 | -15 | -16 | -172 |
| BJ74TL | 1A | -17 | -18 | -19 | -20 | -173 | -21 | -22 | -23 | -24 | -174 | -25 | -26 | -27 | -28 | -175 | -29 | -30 | -31 | -32 | -176 |
| BJ74FL | 1A | -33 | -34 | -35 | -36 | -177 | -37 | -38 | -39 | -40 | -178 | -41 | -42 | -43 | -44 | -179 | -45 | -46 | -47 | -48 | -180 |
| BJ374 | 1B | -49 | -50 | -51 | -52 | -181 | -53 | -54 | -55 | -56 | -182 | -57 | -58 | -59 | -60 | -183 | -61 | -62 | -63 | -64 | -184 |
| BJ79 | 2A | -65 | -66 | -67 | -68 | -185 | -69 | -70 | -71 | -72 | -186 | -73 | -74 | -75 | -76 | -187 | -77 | -78 | -79 | -80 | -188 |
| BJ79TL | 2A | -81 | -82 | -83 | -84 | -189 | -85 | -86 | -87 | -88 | -190 | -89 | -90 | -91 | -92 | -191 | -93 | -94 | -95 | -96 | -192 |
| BJ79FL | 2A | -97 | -98 | -99 | -100 | -193 | -101 | -102 | -103 | -104 | -194 | -105 | -106 | -107 | -108 | -195 | -109 | -110 | -111 | -112 | -196 |
| BJ379 | 2B | -113 | -114 | -115 | -116 | -197 | -117 | -118 | -119 | -120 | -198 | -121 | -122 | -123 | -124 | -199 | -125 | -126 | -127 | -128 | -200 |
| CJ70 | 3A | -129 | -130 | -131 | -132 | -133 | -134 | -135 | -136 | -137 | -138 | -139 | -140 | -141 | -142 | -143 | -144 | -145 | -146 | -147 | -148 |
| CJ370 | 3B | -149 | -150 | -151 | -152 | -153 | -154 | -155 | -156 | -157 | -158 | -159 | -160 | -161 | -162 | -163 | -164 | -165 | -166 | -167 | -168 |
| CJ70TL | 3A | -201 | -202 | -203 | -204 | -205 | -206 | -207 | -208 | -209 | -210 | -211 | -212 | -213 | -214 | -215 | -216 | -217 | -218 | -219 | -220 |

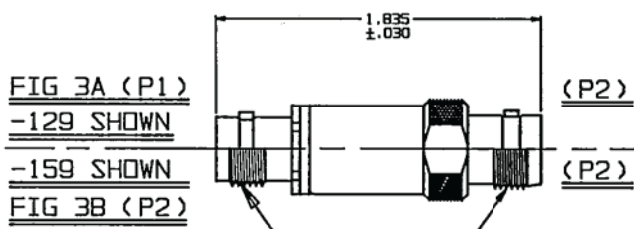
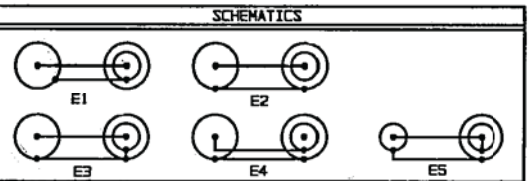


FIG 1A (P1)
-1 SHOWN
-57 SHOWN
FIG 1B (P1)

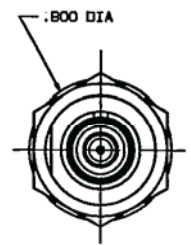
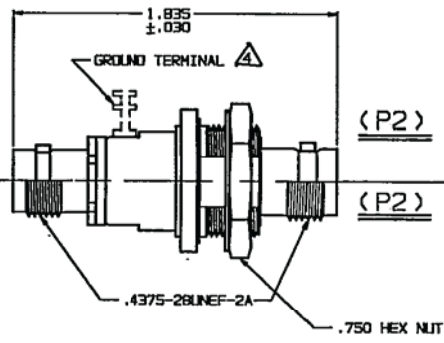
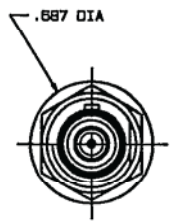
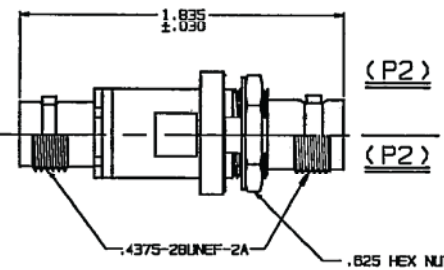


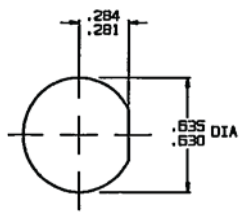
FIG 2A (P1)
-65 SHOWN
-121 SHOWN
FIG 2B (P1)



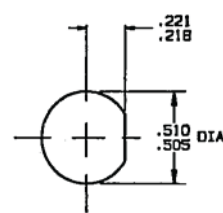
| INCH | MM |
|-------|-------|
| .005 | 0.13 |
| .030 | 0.76 |
| .109 | 2.77 |
| .140 | 3.56 |
| .218 | 5.54 |
| .221 | 5.61 |
| .281 | 7.14 |
| .284 | 7.21 |
| .505 | 12.83 |
| .510 | 12.95 |
| .593 | 15.06 |
| .625 | 15.88 |
| .630 | 16.00 |
| .635 | 16.13 |
| .667 | 17.45 |
| .750 | 19.05 |
| .800 | 20.32 |
| 1.835 | 46.61 |

△ FOR OPTIONAL GROUND TERMINAL ADD PREFIX "G" TO DASH NO (-G1 ETC)

- BETWEEN SERIES ADAPTER, 50 & 75 OHM BNC/TNC COAXIAL JACK TO CONCENTRIC TWINAX/TRIAX INSULATED & NONINSULATED BULKHEAD MOUNT JACK
- FINISH: TFS-1A (NICKEL)
- ALL DIM ARE IN INCHES



RECOMMENDED PANEL CUTOUT
FOR -1 THRU -64
MAX PNL THK .140



RECOMMENDED PANEL CUTOUT
FOR -65 THRU -128
MAX PNL THK .109

| QTY | DESCRIPTION | PART NUMBER | ITEM |
|---|-------------------------------------|---|--------------|
| TOL UNLESS SPECIFIED +.002 ± .005 ± ANGLES | TROMPETER RF connectivity | ADAPTERS: U/BJ20/40 TO *70* SERIES BULKHEAD MOUNT | |
| DWN | DKC | 8-1-85 | MATERIAL |
| CHK | | | CODE IDENT |
| ENGR | | | DRAWING NO. |
| APPR | | | 14949 |
| | | | DATE 8/17/85 |
| | | | SHEET 1 OF 2 |

X-ON Electronics

Largest Supplier of Electrical and Electronic Components

Click to view similar products for [RF Adapters - Between Series category:](#)

Click to view products by [Bel Fuse manufacturer:](#)

Other Similar products are found below :

[5945-9503-000](#) [MCX/F-SMA/M](#) [R192417010](#) [ADBJ20-E1-BJ379](#) [ADM2](#) [ADPL75-A1-PL75](#) [242191](#) [9317505](#) [29-3835P](#) [AD130](#) [ADBJ20-E1-PL74](#) [ADBJ20-E2-BJ79](#) [ADBJ77-A1-PL375](#) [ADBJ77-E1-UPL20](#) [ADRMF370](#) [242215](#) [242228](#) [R125680000W](#) [R192430000](#) [UAD95](#) [1057367-1](#) [8311505](#) [R114704000](#) [R451034500](#) [R451030500](#) [R451543000](#) [HDVDPN](#) [ADBJ20-K1-PL20](#) [R451570000](#) [R451034000](#) [J9](#) [J3WE-5](#) [R451032500](#) [242201RP](#) [17K132-K00S5](#) [AD-RSMAF-RTNC](#) [53K156-K00N5](#) [02K119-K00E3](#) [29S132-K01N5](#) [53S156-K00N5](#) [02S119-S00E3](#) [28K132-K00N5](#) [02S109-K00S3](#) [27-8200TP](#) [242235](#) [ADBJ20-E1-BJ89](#) [000-2900](#) [321-102-003 \(SMA-50/2-H155/W1.03 AU\)](#) [1057377-1](#) [321-350-001 \(SMA-50-R/2-RG316/N2.01\)](#)