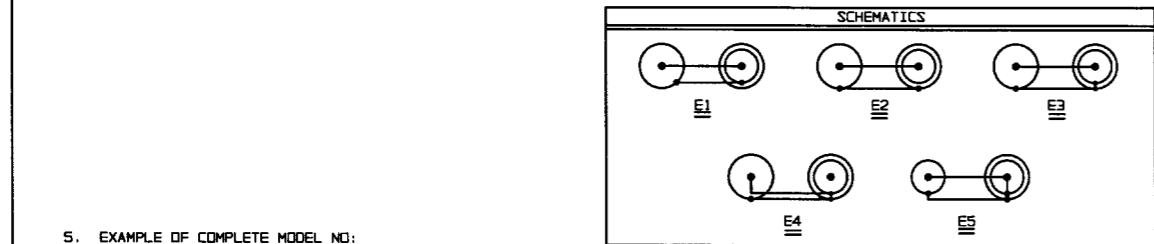


# RED INDICATES ORIGINAL

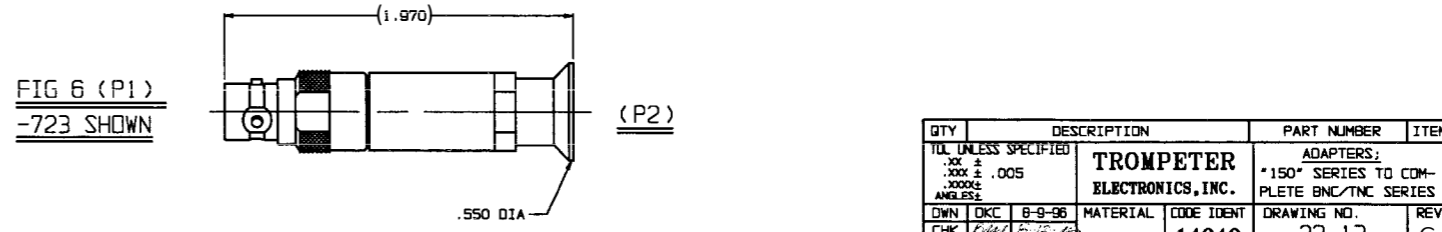
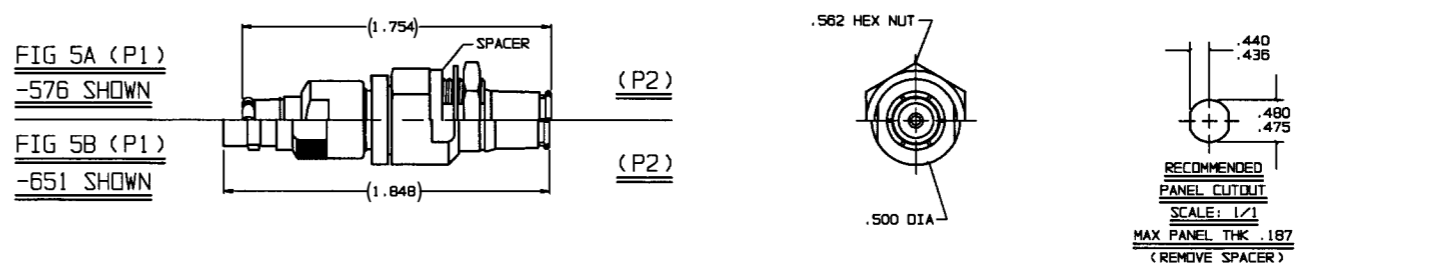
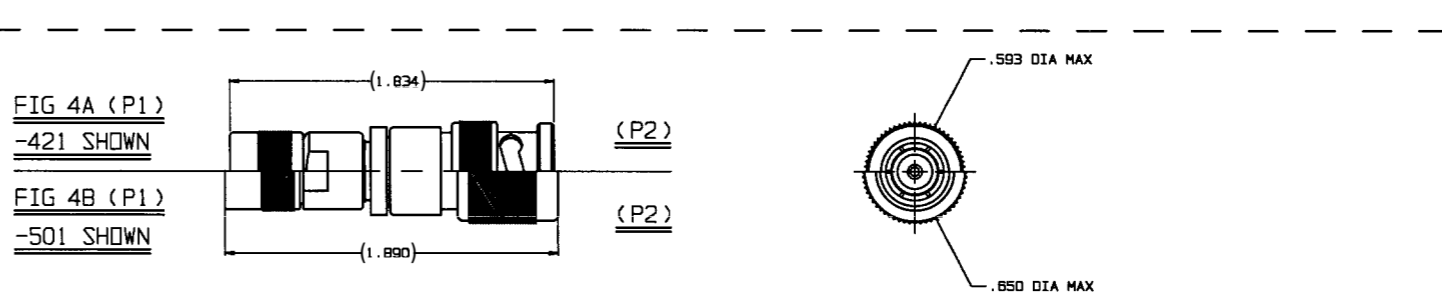
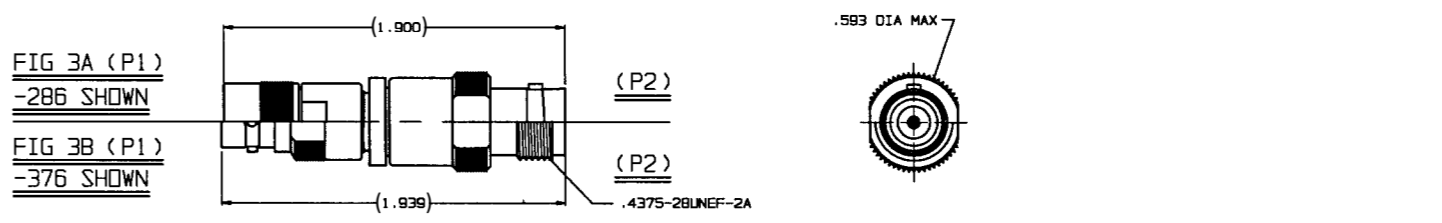
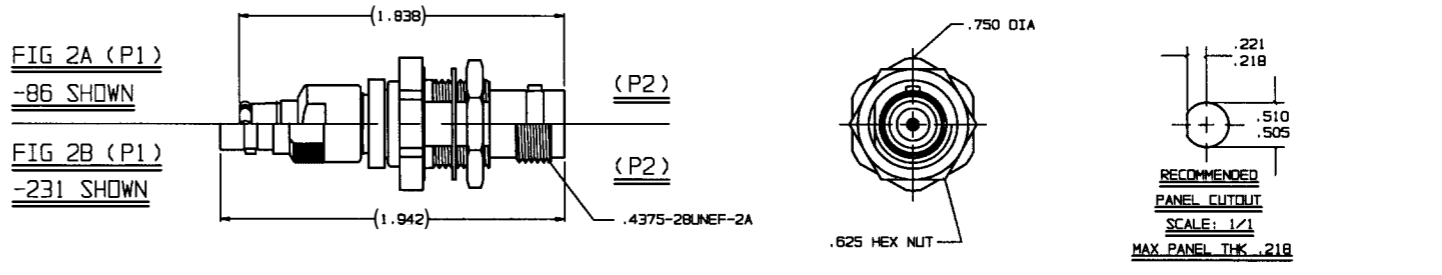
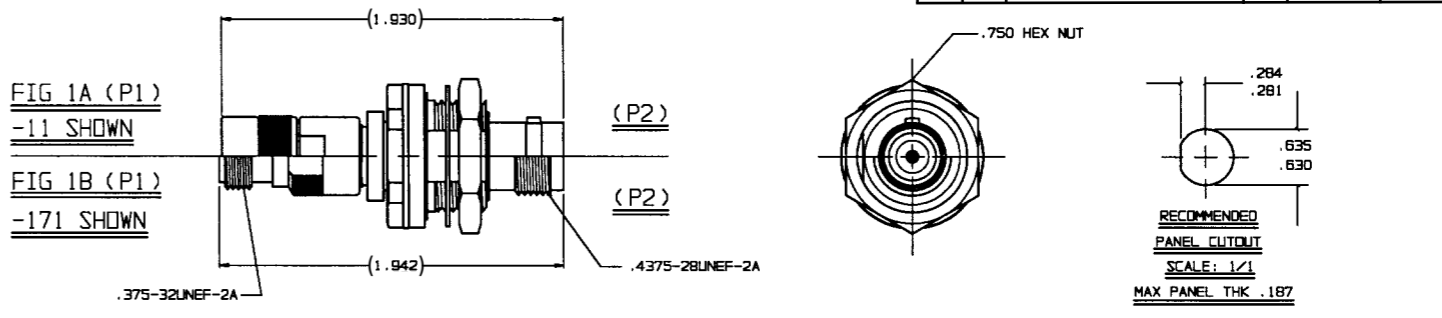
P2 CONN TYPE	FIG NO	P1 CONN TYPE																		INCH	MM																																																																																																																																																																																																																																																																																																																																																																																																																																																																																																																																																																																																																																																																																																																																																																																																																																																																																																																																														
		PL155			PL155FL			PL3155			PL153			CJ150			CJ150FL					CJ3150																																																																																																																																																																																																																																																																																																																																																																																																																																																																																																																																																																																																																																																																																																																																																																																																																																																																																																																																													
		E1	E2	E3	E4	E5	E6	E1	E2	E3	E4	E5	E6	E1	E2	E3	E4	E5	E6			E1	E2	E3	E4	E5	E6																																																																																																																																																																																																																																																																																																																																																																																																																																																																																																																																																																																																																																																																																																																																																																																																																																																																																																																																								
BJ26	1A	-1	-2	-3	-4	-5	-6	-7	-8	-9	-10	-11	-12	-13	-14	-15	-16	-17	-18	-19	-20	-21	-22	-23	-24	-25	-26	-27	-28	-29	-30	-31	-32	-33	-34	-35																																																																																																																																																																																																																																																																																																																																																																																																																																																																																																																																																																																																																																																																																																																																																																																																																																																																																																																															
UBJ26	1A	-36	-37	-38	-39	-40	-41	-42	-43	-44	-45	-46	-47	-48	-49	-50	-51	-52	-53	-54	-55	-56	-57	-58	-59	-60	-61	-62	-63	-64	-65	-66	-67	-68	-69	-70	-71	-72	-73	-74	-75	-76	-77	-78	-79	-80	-81	-82	-83	-84	-85	-86	-87	-88	-89	-90	-91	-92	-93	-94	-95	-96	-97	-98	-99	-100																																																																																																																																																																																																																																																																																																																																																																																																																																																																																																																																																																																																																																																																																																																																																																																																																																																																																																	
BJ29	2A	-71	-72	-73	-74	-75	-76	-77	-78	-79	-80	-81	-82	-83	-84	-85	-86	-87	-88	-89	-90	-91	-92	-93	-94	-95	-96	-97	-98	-99	-100	-101	-102	-103	-104	-105	-106	-107	-108	-109	-110	-111	-112	-113	-114	-115	-116	-117	-118	-119	-120	-121	-122	-123	-124	-125	-126	-127	-128	-129	-130	-131	-132	-133	-134	-135	-136	-137	-138	-139	-140	-141	-142	-143	-144	-145	-146	-147	-148	-149	-150	-151	-152	-153	-154	-155	-156	-157	-158	-159	-160	-161	-162	-163	-164	-165	-166	-167	-168	-169	-170	-171	-172	-173	-174	-175	-176	-177	-178	-179	-180	-181	-182	-183	-184	-185	-186	-187	-188	-189	-190	-191	-192	-193	-194	-195	-196	-197	-198	-199	-200	-201	-202	-203	-204	-205	-206	-207	-208	-209	-210	-211	-212	-213	-214	-215	-216	-217	-218	-219	-220	-221	-222	-223	-224	-225	-226	-227	-228	-229	-230	-231	-232	-233	-234	-235	-236	-237	-238	-239	-240	-241	-242	-243	-244	-245	-246	-247	-248	-249	-250	-251	-252	-253	-254	-255	-256	-257	-258	-259	-260	-261	-262	-263	-264	-265	-266	-267	-268	-269	-270	-271	-272	-273	-274	-275	-276	-277	-278	-279	-280	-281	-282	-283	-284	-285	-286	-287	-288	-289	-290	-291	-292	-293	-294	-295	-296	-297	-298	-299	-300	-301	-302	-303	-304	-305	-306	-307	-308	-309	-310	-311	-312	-313	-314	-315	-316	-317	-318	-319	-320	-321	-322	-323	-324	-325	-326	-327	-328	-329	-330	-331	-332	-333	-334	-335	-336	-337	-338	-339	-340	-341	-342	-343	-344	-345	-346	-347	-348	-349	-350	-351	-352	-353	-354	-355	-356	-357	-358	-359	-360	-361	-362	-363	-364	-365	-366	-367	-368	-369	-370	-371	-372	-373	-374	-375	-376	-377	-378	-379	-380	-381	-382	-383	-384	-385	-386	-387	-388	-389	-390	-391	-392	-393	-394	-395	-396	-397	-398	-399	-400	-401	-402	-403	-404	-405	-406	-407	-408	-409	-410	-411	-412	-413	-414	-415	-416	-417	-418	-419	-420	-421	-422	-423	-424	-425	-426	-427	-428	-429	-430	-431	-432	-433	-434	-435	-436	-437	-438	-439	-440	-441	-442	-443	-444	-445	-446	-447	-448	-449	-450	-451	-452	-453	-454	-455	-456	-457	-458	-459	-460	-461	-462	-463	-464	-465	-466	-467	-468	-469	-470	-471	-472	-473	-474	-475	-476	-477	-478	-479	-480	-481	-482	-483	-484	-485	-486	-487	-488	-489	-490	-491	-492	-493	-494	-495	-496	-497	-498	-499	-500	-501	-502	-503	-504	-505	-506	-507	-508	-509	-510	-511	-512	-513	-514	-515	-516	-517	-518	-519	-520	-521	-522	-523	-524	-525	-526	-527	-528	-529	-530	-531	-532	-533	-534	-535	-536	-537	-538	-539	-540	-541	-542	-543	-544	-545	-546	-547	-548	-549	-550	-551	-552	-553	-554	-555	-556	-557	-558	-559	-560	-561	-562	-563	-564	-565	-566	-567	-568	-569	-570	-571	-572	-573	-574	-575	-576	-577	-578	-579	-580	-581	-582	-583	-584	-585	-586	-587	-588	-589	-590	-591	-592	-593	-594	-595	-596	-597	-598	-599	-600	-601	-602	-603	-604	-605	-606	-607	-608	-609	-610	-611	-612	-613	-614	-615	-616	-617	-618	-619	-620	-621	-622	-623	-624	-625	-626	-627	-628	-629	-630	-631	-632	-633	-634	-635	-636	-637	-638	-639	-640	-641	-642	-643	-644	-645	-646	-647	-648	-649	-650	-651	-652	-653	-654	-655	-656	-657	-658	-659	-660	-661	-662	-663	-664	-665	-666	-667	-668	-669	-670	-671	-672	-673	-674	-675	-676	-677	-678	-679	-680	-681	-682	-683	-684	-685	-686	-687	-688	-689	-690	-691	-692	-693	-694	-695	-696	-697	-698	-699	-700	-701	-702	-703	-704	-705	-706	-707	-708	-709	-710	-711	-712	-713	-714	-715	-716	-717	-718	-719	-720	-721	-722	-723	-724	-725	-726	-727	-728	-729	-730	-731	-732	-733	-734	-735	-736	-737	-738	-739	-740	-741	-742	-743	-744	-745	-746	-747	-748	-749	-750	-751	-752	-753	-754	-755	-756	-757	-758	-759	-760	-761	-762	-763	-764	-765	-766	-767	-768	-769	-770	-771	-772	-773	-774	-775	-776	-777	-778	-779	-780	-781	-782	-783	-784	-785	-786	-787	-788	-789	-790	-791	-792	-793	-794	-795	-796	-797	-798	-799	-800	-801	-802	-803	-804	-805	-806	-807	-808	-809	-810	-811	-812	-813	-814	-815	-816	-817	-818	-819	-820	-821	-822	-823	-824	-825	-826	-827	-828	-829	-830	-831	-832	-833	-834	-835	-836	-837	-838	-839	-840	-841	-842	-843	-844	-845	-846	-847	-848	-849	-850	-851	-852	-853	-854	-855	-856	-857	-858	-859	-860	-861	-862	-863	-864	-865	-866	-867	-868	-869	-870	-871	-872	-873	-874	-875	-876	-877	-878	-879	-880	-881	-882	-883	-884	-885	-886	-887	-888	-889	-890	-891	-892	-893	-894	-895	-896	-897	-898	-899	-900	-901	-902	-903	-904	-905	-906	-907	-908	-909	-910	-911	-912	-913	-914	-915	-916	-917	-918	-919	-920	-921	-922	-923	-924	-925	-926	-927	-928	-929	-930	-931	-932	-933	-934	-935	-936	-937	-938	-939	-940	-941	-942	-943	-944	-945	-946	-947	-948	-949	-950	-951	-952	-953	-954	-955	-956	-957	-958	-959	-960	-961	-962	-963	-964	-965	-966	-967	-968	-969	-970	-971	-972	-973	-974	-975	-976	-977	-978	-979	-980	-981	-982	-983	-984	-985	-986	-987	-988	-989	-990	-991	-992	-993	-994	-995	-996	-997	-998	-999	-1000

INCH	MM
.005	0.13
.030	0.76
.187	4.75
.218	5.54
.221	5.61
.281	7.14
.284	7.21
.436	11.07
.440	11.18
.475	12.06
.480	12.19
.500	12.70
.505	12.83
.510	12.95
.550	13.97
.552	14.27
.593	15.06
.625	15.87
.630	16.00
.635	16.13
.650	16.51
.750	19.05
1.754	44.55
1.834	46.58
1.838	46.68
1.848	46.94
1.890	48.00
1.900	48.26
1.930	49.02
1.939	49.23
1.942	49.33
1.970	50.04

DWG SIZE	D	REVISIONS		22-13			
		REV	ED	DESCRIPTION	DWN	APPROVED	DATE
		B	11731	SH 3, ITEM 27 WAS P/N 3-0025-29; SEE ECD	DKC	<i>M.A.</i>	8/16/88
		C	56274			M. A.	6/23/16



- EXAMPLE OF COMPLETE MODEL NO:  
AD - PL155 - E1 - PL20  
ADAPTER (P1) CONN TYPE (P2) CONN TYPE SCHEMATIC
- EXAMPLE OF COMPLETE PART NO:  
22-13-1  
BASIC PART NO DASH NO
- BETWEEN SERIES ADAPTER, \*150\* SERIES TO COMPLETE BNC/TNC SERIES
- BODY FINISH NICKEL
- ALL DIM ARE IN INCHES



QTY	DESCRIPTION	PART NUMBER	ITEM
TIL UNLESS SPECIFIED	<b>TROMPETER ELECTRONICS, INC.</b>		ADAPTERS, *150* SERIES TO COMPLETE BNC/TNC SERIES
.XXX 2			
.XXX 2			
.XXX 2			
.XXX 2			
DWN	DKC	8-9-88	MATERIAL CODE IDENT
CHK	<i>P.H.H.</i>	5-15-88	14949
ENGR	<i>P.H.H.</i>	5-15-88	22-13
APPR	<i>P.H.H.</i>	8/15/88	C

## X-ON Electronics

Largest Supplier of Electrical and Electronic Components

*Click to view similar products for [RF Adapters - Between Series](#) category:*

*Click to view products by [Bel Fuse](#) manufacturer:*

Other Similar products are found below :

[5945-9503-000](#) [ADPL75-A1-PL75](#) [BJ158FL](#) [242191](#) [ADBJ20-E2-BJ79](#) [ADBJ77-A1PL3155](#) [242190](#) [25-7580TP](#) [M55339/51-00001](#) [UAD95](#)  
[242201RP](#) [29-3840P](#) [242235](#) [TM-FMEM-NDS-50](#) [AD-MQF-QCM-PM-2.5](#) [AD-QCF-QCF-SP-2.5](#) [AD-HQM-QCM-PM-2.5](#) [AD-MQM-](#)  
[QCM-PM-2.5](#) [AD-HQF-QCM-PM-2.5](#) [CT2771](#) [CT2762](#) [CT3391](#) [CT3387](#) [SMPP\(FD\)-HKP](#) [ADBJ377-A1-PL74](#) [VA301](#) [ADT-2681-NM-](#)  
[SMF-02](#) [000-78875](#) [ADUBJ20-E1-PL375](#) [AD-UBJ20-E1-BJ89](#) [CT2940](#) [CT3389](#) [000-2900](#) [R191630007](#) [1057377-1](#) [321-203-001 \(SMA-50-](#)  
[R/2-RG58/W3.01\)](#) [321-350-001 \(SMA-50-R/2-RG316/N2.01\)](#) [RF2-02-T-02-50-G](#) [RF2-03-T-00-50-G](#) [4295](#) [1269#](#) [1270](#) [BNC\(75\)J-H.FLJ-](#)  
[BPA-V\(40\)](#) [1296](#) [1297](#) [400PSM-CR](#) [1468](#) [02K118-K00S3](#) [53K164-S00N1](#) [53S164-K00N1](#)