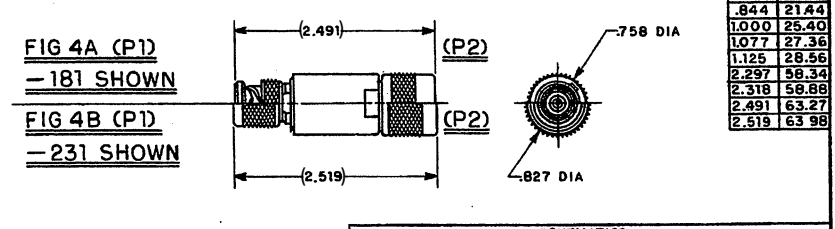
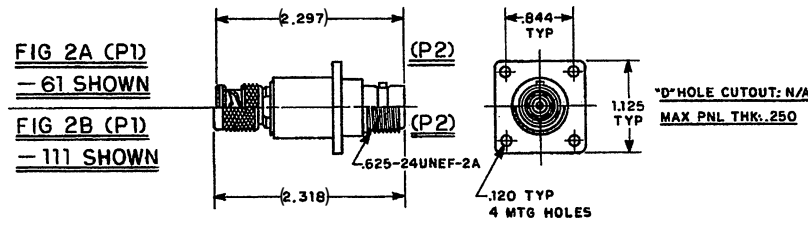
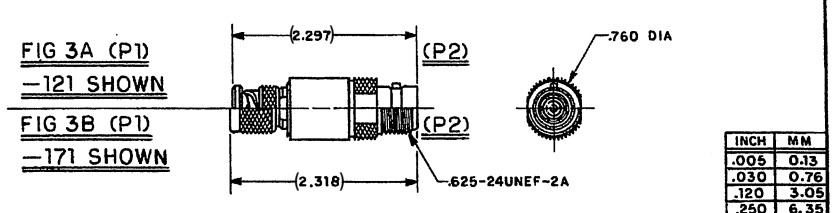
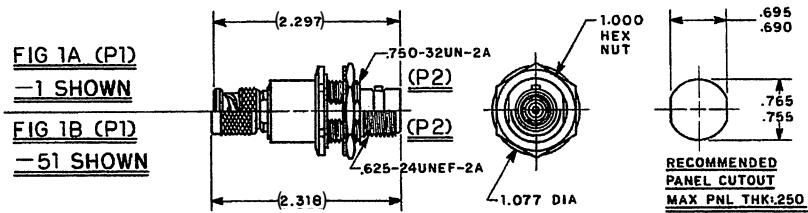


DATA CONTAINED IN THIS DOCUMENT IS PROPRIETARY TO TROMPETER ELECTRONICS INC. AND SHALL NOT BE DISCLOSED, COPIED OR USED FOR PROCUREMENT OR MANUFACTURE WITHOUT EXPRESS WRITTEN PERMISSION.

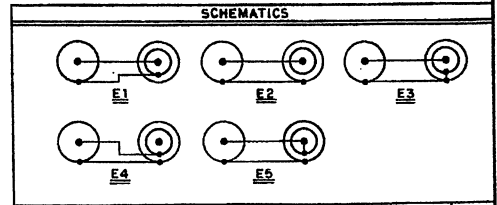
REV		ED	DESCRIPTION	DWN	APPROVED	DATE
ND 56280					C. M.	8/19/16

P2 CONN TYPE	FIG NO	P1 CONN TYPE																			
		PL21					UPL21					PL41					UPL41				
		SCHEMATICS																			
		E1	E2	E3	E4	E5	E1	E2	E3	E4	E5	E1	E2	E3	E4	E5	E1	E2	E3	E4	E5
DASH NUMBERS																					
BJ89	1A	-1	-2	-3	-4	-5	-6	-7	-8	-9	-10	-11	-12	-13	-14	-15	-16	-17	-18	-19	-20
BJ893	1A	-21	-22	-23	-24	-25	-26	-27	-28	-29	-30	-31	-32	-33	-34	-35	-36	-37	-38	-39	-40
BJ389	1B	-41	-42	-43	-44	-45	-46	-47	-48	-49	-50	-51	-52	-53	-54	-55	-56	-57	-58	-59	-60
BJ89F	2A	-61	-62	-63	-64	-65	-66	-67	-68	-69	-70	-71	-72	-73	-74	-75	-76	-77	-78	-79	-80
BJ893F	2A	-81	-82	-83	-84	-85	-86	-87	-88	-89	-90	-91	-92	-93	-94	-95	-96	-97	-98	-99	-100
BJ389F	2B	-101	-102	-103	-104	-105	-106	-107	-108	-109	-110	-111	-112	-113	-114	-115	-116	-117	-118	-119	-120
CJ80	3A	-121	-122	-123	-124	-125	-126	-127	-128	-129	-130	-131	-132	-133	-134	-135	-136	-137	-138	-139	-140
CJ803	3A	-141	-142	-143	-144	-145	-146	-147	-148	-149	-150	-151	-152	-153	-154	-155	-156	-157	-158	-159	-160
CJ380	3B	-161	-162	-163	-164	-165	-166	-167	-168	-169	-170	-171	-172	-173	-174	-175	-176	-177	-178	-179	-180
PL80	4A	-181	-182	-183	-184	-185	-186	-187	-188	-189	-190	-191	-192	-193	-194	-195	-196	-197	-198	-199	-200
PL803	4A	-201	-202	-203	-204	-205	-206	-207	-208	-209	-210	-211	-212	-213	-214	-215	-216	-217	-218	-219	-220
PL380	4B	-221	-222	-223	-224	-225	-226	-227	-228	-229	-230	-231	-232	-233	-234	-235	-236	-237	-238	-239	-240



- EXAMPLE OF COMPLETE MODEL NO  
AD-PL21-E1-BJ89  
ADAPTER P1 CONN SCHEMATIC P2 CONN
- EXAMPLE OF COMPLETE PART NO:  
BASIC PART NO 12-22 X DASH NO
- BETWEEN SERIES ADAPTER; 50 & 75 OHM PIN CONTACT TYPE BNC/TNC PLUG, TO 80 SERIES PIN & SOCKET CONTACT TYPE 2 LUG, 3 LUG & THREADED PLUG, JACK, NON INSULATED BULKHEAD MOUNT JACK & FLANGE MOUNT JACK
- BODY FINISH NICKEL
- ALL DIM ARE IN INCHES

RED INDICATES ORIGINAL



QTY	DESCRIPTION	PART NUMBER	ITEM
TOL UNLESS SPECIFIED XX ± XXX ±.005 XXXX ± ANGLES ±	<b>TROMPETER ELECTRONICS, INC.</b>	ADAPTERS: MALE BNC / TNC SERIES TO COMPLETE "80" SERIES	
DWN DKC 1-20-87	MATERIAL	CODE IDENT 14949	DRAWING NO. 12-22
CHK F3 1-26-87			REV ND
ENGR [Signature] 2-3-87			
APPR [Signature] 2-22-87	SCALE 1/1	DATE 2-6-87	SHEET 1 OF 1

## X-ON Electronics

Largest Supplier of Electrical and Electronic Components

*Click to view similar products for [RF Adapters - Between Series](#) category:*

*Click to view products by [Bel Fuse](#) manufacturer:*

Other Similar products are found below :

[5945-9503-000](#) [ADPL75-A1-PL75](#) [BJ158FL](#) [242191](#) [ADBJ20-E2-BJ79](#) [ADBJ77-A1PL3155](#) [242190](#) [25-7580TP](#) [M55339/51-00001](#) [UAD95](#)  
[242201RP](#) [29-3840P](#) [242235](#) [TM-FMEM-NDS-50](#) [AD-MQF-QCM-PM-2.5](#) [AD-QCF-QCF-SP-2.5](#) [AD-HQM-QCM-PM-2.5](#) [AD-MQM-](#)  
[QCM-PM-2.5](#) [AD-HQF-QCM-PM-2.5](#) [CT2771](#) [CT2762](#) [CT3391](#) [CT3387](#) [SMPP\(FD\)-HKP](#) [ADBJ377-A1-PL74](#) [VA301](#) [ADT-2681-NM-](#)  
[SMF-02](#) [000-78875](#) [ADUBJ20-E1-PL375](#) [AD-UBJ20-E1-BJ89](#) [CT2940](#) [CT3389](#) [000-2900](#) [R191630007](#) [1057377-1](#) [321-203-001 \(SMA-50-](#)  
[R/2-RG58/W3.01\)](#) [321-350-001 \(SMA-50-R/2-RG316/N2.01\)](#) [RF2-02-T-02-50-G](#) [RF2-03-T-00-50-G](#) [4295](#) [1269#](#) [1270](#) [BNC\(75\)J-H.FLJ-](#)  
[BPA-V\(40\)](#) [1296](#) [1297](#) [400PSM-CR](#) [1468](#) [02K118-K00S3](#) [53K164-S00N1](#) [53S164-K00N1](#)