

Right Angle SMA Male Plug to SMA Female Jack

Model Number

ADT-8000-MF-SMA-02

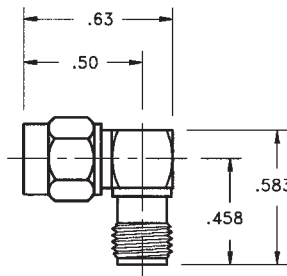
SPECIFICATIONS

Frequency: DC - 18.0 GHz

VSWR: 1.05 + .010 f (GHz)

Impedance: 50 Ohms

Finish: Passivated Stainless Steel



Formerly SMA-028-8000 and SMA-8000-28-000-02

Right Angle SMA Female Jack to SMA Female Jack

Model Number

ADT-8000-FF-SMA-02

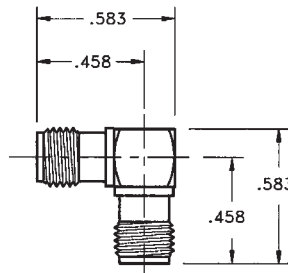
SPECIFICATIONS

Frequency: DC - 18.0 GHz

VSWR: 1.05 + .010 f (GHz)

Impedance: 50 Ohms

Finish: Passivated Stainless Steel



Formerly SMA-026-8000 and SMA-8000-26-000-02

Right Angle SMA Male Plug to SMA Male Plug

Model Number

ADT-8000-MM-SMA-02

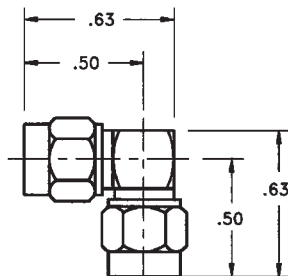
SPECIFICATIONS

Frequency: DC - 18.0 GHz

VSWR: 1.05 + .010 f (GHz)

Impedance: 50 Ohms

Finish: Passivated Stainless Steel



SMA Female Jack to SMA Female Jack - Bkhd Mount - Hermetic

Model Number

ADT-2824-FF-SMA-02

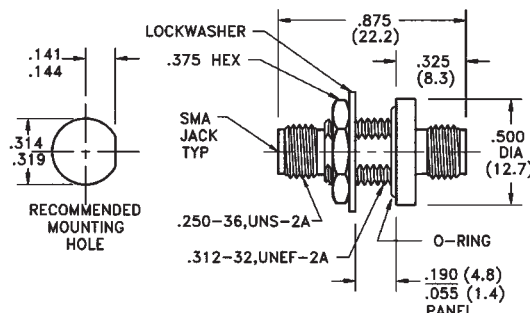
SPECIFICATIONS

Frequency: DC - 18.0 GHz

VSWR: 1.10 + .010 f (GHz)

Impedance: 50 Ohms

Finish: Passivated Stainless Steel



Standard finish is passivated stainless steel, for gold plating change -02 suffix to -00.

X-ON Electronics

Largest Supplier of Electrical and Electronic Components

Click to view similar products for [RF Adapters - In Series category:](#)

Click to view products by [Bel Fuse manufacturer:](#)

Other Similar products are found below :

[5916-1103-603](#) [5919-1503-000](#) [651A505](#) [82-5552](#) [9030-9523-502](#) [PN2C](#) [A0407000](#) [R114703000W](#) [R125771001](#) [R141710000W](#)
[R141723161](#) [R141730000](#) [R143730700](#) [R143770000](#) [R161703000W](#) [R161753000W](#) [R161791530W](#) [R201705000](#) [R222705200](#)
[R222M40010W](#) [R223703180](#) [R316754000](#) [R405006000](#) [R443162000](#) [AD78TL](#) [HRM-513S](#) [1996352-2](#) [2157155-1](#) [252169-75](#) [AD158](#)
[2101130-1](#) [252186](#) [R114704000W](#) [R114720000W](#) [R125705001](#) [R125705701](#) [R125771000](#) [R125771001W](#) [R127704001](#) [R127.870.001](#)
[R127872001](#) [R141717000](#) [R142710000](#) [R142723000](#) [R143703000](#) [R143704000](#) [R143705700](#) [R161715000W](#) [R161771000W](#) [R176754000](#)