

SC Male Plug to SC Female Jack

Model Number

ADT-2832-MF-SCO-02

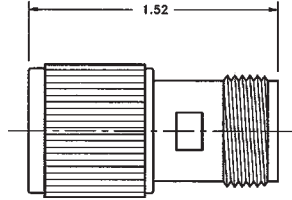
SPECIFICATIONS

Frequency: DC - 11.0 GHz

VSWR: 1.08 @ DC - 4.0 GHz
1.10 @ 4.0 - 8.0 GHz
1.15 @ 8.0 - 11.0

Impedance: 50 Ohms

Finish: Passivated Stainless Steel



SC Female Jack to SC Female Jack

Model Number

ADT-2833-FF-SCO-02

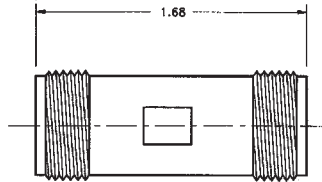
SPECIFICATIONS

Frequency: DC - 11.0 GHz

VSWR: 1.08 @ DC - 4.0 GHz
1.10 @ 4.0 - 8.0 GHz
1.15 @ 8.0 - 11.0 GHz

Impedance: 50 Ohms

Finish: Passivated Stainless Steel



SC Male Plug to SC Male Plug

Model Number

ADT-2834-MM-SCO-02

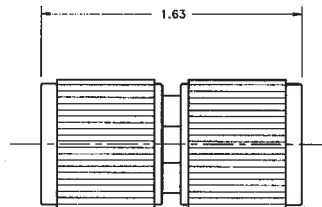
SPECIFICATIONS

Frequency: DC - 11.0 GHz

VSWR: 1.08 @ DC - 4.0 GHz
1.10 @ 4.0 - 8.0 GHz
1.15 @ 8.0 - 11.0 GHz

Impedance: 50 Ohms

Finish: Passivated Stainless Steel



SC Female Jack to SC Female Jack - Flange Mount

Model Number

ADT-2835-FF-SCO-02

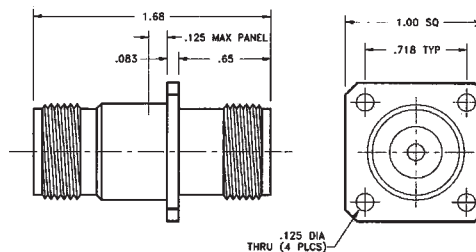
SPECIFICATIONS

Frequency: DC - 11.0 GHz

VSWR: 1.08 @ DC - 4.0 GHz
1.10 @ 4.0 - 8.0 GHz
1.15 @ 8.0 - 11.0 GHz

Impedance: 50 Ohms

Finish: Passivated Stainless Steel



Note: Also available in bulkhead mount as ADT-2836-FF-SCO-02

X-ON Electronics

Largest Supplier of Electrical and Electronic Components

Click to view similar products for [RF Adapters - In Series category:](#)

Click to view products by [Bel Fuse manufacturer:](#)

Other Similar products are found below :

[5916-1103-603](#) [5919-1503-000](#) [5919-9503-000](#) [651A505](#) [82-5552](#) [9030-9523-502](#) [PN2C](#) [A0407000](#) [R114703000W](#) [R125771001](#)
[R127871001](#) [R141710000W](#) [R141723161](#) [R141730000](#) [R143730700](#) [R143770000](#) [R161703000W](#) [R161753000W](#) [R161791530W](#)
[R201705000](#) [R222705200](#) [R222M40010W](#) [R222M40050](#) [R223703180](#) [R316754000](#) [R405006000](#) [R443162000](#) [AD78TL](#) [HRM-513S](#)
[1996352-2](#) [2157155-1](#) [252169-75](#) [AD158](#) [2101130-1](#) [252186](#) [R114704000W](#) [R114720000W](#) [R125705001](#) [R125705701](#) [R125771000](#)
[R125771001W](#) [R127704001](#) [R127.870.001](#) [R127872001](#) [R141717000](#) [R142710000](#) [R142723000](#) [R143703000](#) [R143704000](#) [R143705700](#)