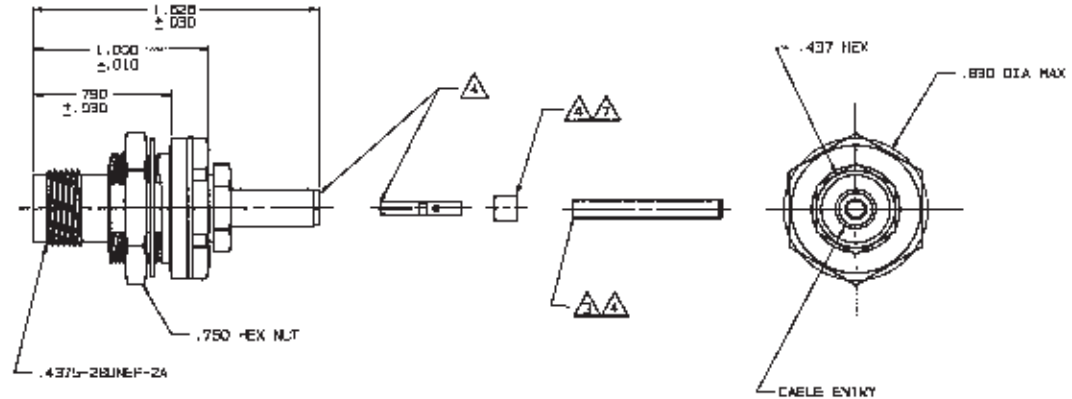


# RED INDICATES ORIGINAL

DATA CONTAINED IN THIS DOCUMENT IS PROPRIETARY TO TROMPETER ELECTRONICS INC. AND SHALL NOT BE DISSEMINATED, COPIED OR USED FOR REPRODUCTION OR MANUFACTURE WITHOUT EXPRESS WRITTEN PERMISSION.

REVISONS			1-0048	SH 1	
REV	ED	DESCRIPTION	OWN	APPROVED	DATE
L	10055	DDM .830 DIA MAX .810 DIA GENERAL DIMS (S) SEE ELL	DTC	<i>[Signature]</i>	<i>[Date]</i>

DASH NO	CABLES ACCOMMODATED	A HEX	ASSEMBLE PER
-001	RG 178, 198	.178	TAI-125
-002	HEWLETT PACKARD 9142-1107	.187	
-003	RG-174, -188, -318	.178	
-004	RG-178, -187		
-005	NORTHERN ELECTRIC UBL-SHLD RG-158	.187	
-006	GRUMMAN-RCS79CPT 08L-SHLD RG-167		
-007	275-3881 MICRODOT RG-195 -180		
-008	421-111 ESSEX	.178	
-009	8218 DC DEN VR23023 BELDEN 21-587 ESSEX		
-010	RG-122		
-011	RG-58, -141, -303 21-577 ESSEX	.213	TAI-126
-012	RG-55, -142, -223 RG-40C		
-013	RG-58		
-013A	70C-75-2	.255	
-013B	RS-82		
-014	8212 BELDEN		
-015	7304 AT&T	.280	
-015A	RG-71		
-016	724 AT&T 8291 BELDEN	.324	
-017	RG-5	.344	
-018	8268 RR DEN	.255	
-019	8279 BELDEN		
-020	8249 BELDEN	.260	
-021	88240 BELDEN	.213	
-022	88241, 88250 BELDEN	.213	
-023	88138 BELDEN	.213	
-024	88120 BELDEN	.213	
-025	734A, A*KT	.255	
-026	735A, A*KT	.178	
-027	KS19224-S, A*KT		



-001 SHOWN

INCH	MM
.005	0.13
.010	0.25
.030	0.76
.178	4.52
.187	4.75
.187	5.00
.213	5.41
.255	6.48
.281	7.14
.284	7.21
.290	7.37
.324	8.23
.344	8.74
.437	11.10
.630	16.00
.825	21.13
.750	19.05
.780	20.07
.830	21.08
1.000	25.40
1.626	41.50

FOR CABLE GROUP -011 SUPPLY 1 EA ACC011 FOR CABLE GROUPS -013, -013A & -013B SUPPLY 1 EA ACC013 MAY BE ASSEMBLED TO CABLE/CONNECTOR ASSY USING 3M SC1700RTP HT. 1000 PLASTIC ADHESIVE, OR EQUIV

IF PLASTIC STRAIN RELIEF REQUIRED, ADD SUITIX \*HT\* TO MODEL NO (ONLY AVAILABLE WITH -011, -013, -013A & -013B)

CONTACT SUPPORT BUSHING REQUIRED ON -013B, -015A & -022 ONLY

MAX PANEL THK .187

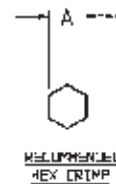
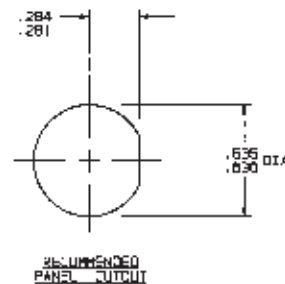
RF COAXIAL THD FULL COMP INSULATED R.F. RHFAN CABLE RECEPTACLE (EQUIV MI.-CAT \*D\*)

CONTACT SLEEVE, CRIMP SLEEVE & CONTACT SUPPORT BUSHING ARE SUPPLIED LOOSE

SLEEVE REQUIRED ON -001 THRU -007 AND -027 ONLY

FINISH: TPS-1A (NICKEL)

ALL DIM ARE IN INCHES



QTY	DESCRIPTION	PART NUMBER	ITEM
TOL UNLESS SPECIFIED			
.001 & .005 ANGLES UNLESS			
OWN		TROMPETER RF connectivity	
D-K		BJ246	
DATE	11-30-94	MATERIAL	14949
DRW	289	DOC CODE	1-0048
ENGR	289	DRAWING NO.	1-0048
REV	L	SCALE	2:1
NEXT ASSY		DATE	1/25/92
		SHEET 1 OF 2	

## X-ON Electronics

Largest Supplier of Electrical and Electronic Components

*Click to view similar products for [RF Connectors / Coaxial Connectors](#) category:*

*Click to view products by [Bel Fuse](#) manufacturer:*

Other Similar products are found below :

[8915-1511-000](#) [89674-0827](#) [6001-7071-019](#) [6002-7051-003](#) [6002-7551-202](#) [6059674-1](#) [619550-1](#) [630059-000](#) [M39030/3-01N](#) [6500-7071-046](#) [6769](#) [CX050L2AQ](#) [7002-1541-010](#) [7002-1542-011](#) [7004-1512-000](#) [7009-1511-004](#) [7010-1511-000](#) [7029-1511-060](#) [7101-1541-010](#) [7101-1571-002](#) [7145-1521-002](#) [7203-1571-003](#) [7209-1511-011](#) [7210-1511-015](#) [7210-1511-019](#) [73137-5015](#) [73216-2241](#) [73404-2300](#) [7405-1521-005](#) [7405-1521-802](#) [8527](#) [8547](#) [FS11V](#) [877931](#) [8808-1511-001](#) [9049-9513-000](#) [9074-9513-000](#) [9101-9573-002](#) [910A205F](#) [9130-9573-002](#) [PL11SC-026](#) [PL375-33](#) [PL40-5](#) [PL74C-221](#) [PL75MC-217](#) [PL803-7](#) [980-8666-005](#) [1200690078](#) [1-201144-1](#) [R107003010W](#)