

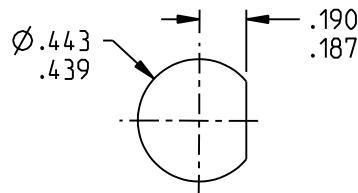
NOTES: UNLESS OTHERWISE SPECIFIED.

1. MATERIAL AND FINISH:
  - 1.1 BODY & PANEL NUT: NICKEL PLATED BRASS
  - 1.2 CENTER CONTACT: GOLD PLATED BERYLLIUM COPPER
  - 1.3 INTERMEDIATE CONTACT: GOLD PLATED BRASS
  - 1.4 DIELECTRIC (INNER & OUTER): PTFE (TEFLON)
  - 1.5 LOCK WASHER: NICKEL PLATED COPPER ALLOY
  - 1.6 GASKET: SILICONE RUBBER

2. ELECTRICAL:
  - 2.1 IMPEDANCE: NON-CONSTANT
  - 2.2 FREQUENCY (MAX): 500 MHz

3. PANEL NUT TORQUE (MAX): 35 INCH POUND

4. PANEL THICKNESS (MAX): .190



RECOMMENDED  
PANEL CUTOUT

		<b>TROMPETER</b>	
	This PROPRIETARY Document is property of Cinch Connectivity Solutions. It is confidential in nature, non-transferable, and issued with the clear understanding that it is not traced or copied without permission and is returnable upon demand.	<b>RoHS2</b> <input checked="" type="checkbox"/> 2011/65/EU	Title: <b>TTM BHD FEEDTHRU</b>
INTERPRET DRAWING IN ACCORDANCE WITH ASME Y14.5-2009.	UNLESS OTHERWISE SPECIFIED UNITS: INCH .XX ±.02 .XXX ±.005 ANGLES ±2°	Model No. <b>BJJ3158</b>	Date: <b>3/30/2016</b>
Size <b>A</b>	DO NOT SCALE DRAWING	Sheet <b>1 OF 1</b>	

## X-ON Electronics

Largest Supplier of Electrical and Electronic Components

*Click to view similar products for [RF Adapters - In Series](#) category:*

*Click to view products by [Bel Fuse](#) manufacturer:*

Other Similar products are found below :

[5916-1103-603](#) [5919-1503-000](#) [651A505](#) [82-5552](#) [9030-9523-502](#) [PN2C](#) [A0407000](#) [R114703000W](#) [R125771001](#) [R141710000W](#)  
[R141723161](#) [R141730000](#) [R143730700](#) [R143770000](#) [R161703000W](#) [R161753000W](#) [R161791530W](#) [R201705000](#) [R222705200](#)  
[R222M40010W](#) [R223703180](#) [R316754000](#) [R405006000](#) [R443162000](#) [AD78TL](#) [HRM-513S](#) [1996352-2](#) [2157155-1](#) [252169-75](#) [AD158](#)  
[2101130-1](#) [252186](#) [R114704000W](#) [R114720000W](#) [R125705001](#) [R125705701](#) [R125771000](#) [R125771001W](#) [R127704001](#) [R127.870.001](#)  
[R127872001](#) [R141717000](#) [R142710000](#) [R142723000](#) [R143703000](#) [R143704000](#) [R143705700](#) [R161715000W](#) [R161771000W](#) [R176754000](#)