

RED INDICATES ORIGINAL

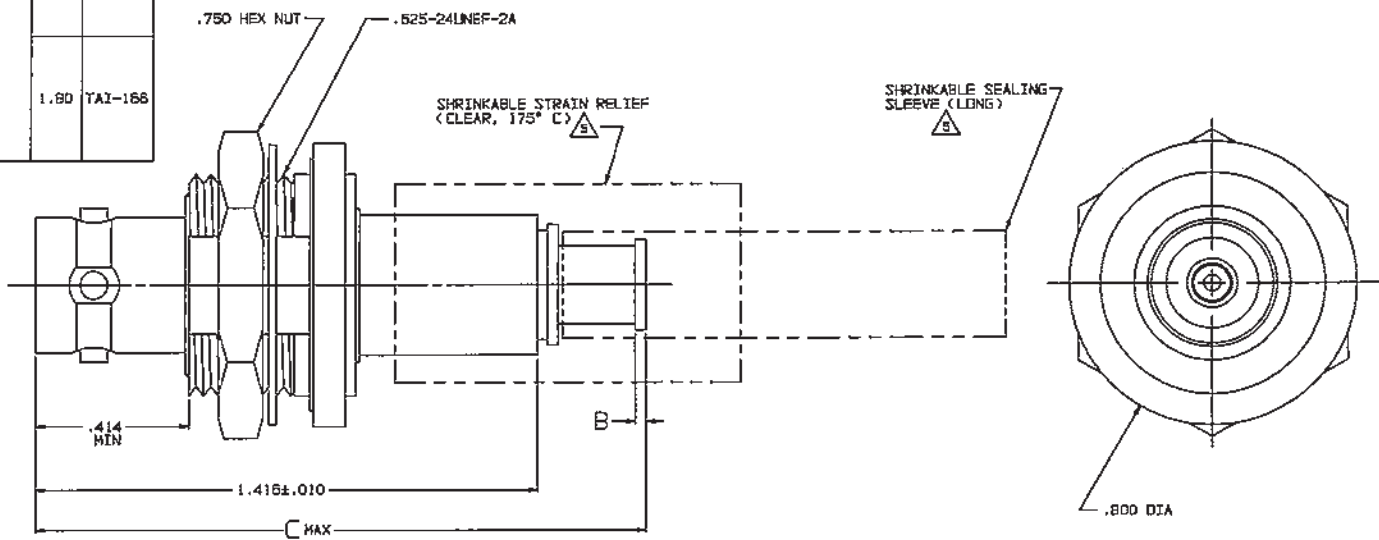
ENG SIZE
C DATA CONTAINED IN THIS DOCUMENT IS PROPRIETARY TO TROMPETER ELECTRONICS, INC. AND SHALL NOT BE DISCLOSED, COPIED OR USED FOR PROCUREMENT OR MANUFACTURE WITHOUT EXPRESS WRITTEN PERMISSION.

REVISIONS			3-0203	SH 1
REV	ED	DESCRIPTION	DWN	APPROVED
P	12082	-308 TAI-218 WAS TAI-188; ADDED -308 & -309; SEE ECO	DKC	<i>FW</i> 8/12/97

DASH NO	CABLES ACCOMMODATED	A HEX	B DIM	C MAX	ASSEMBLE PER
-201	M17/176-00002				
-202	TWC-78-1				
-203	TWC-124-1A				
-204	10502, RAYCHEM				
-205	TWAC-78-1F2				
-206	782600130, RAYCHEM			1.80	TAI-168
-207	83310, BELDEN				
-208	202-3927, MICRODOT				
-209	202-3642, MICRODOT				
-210	B451, BELDEN				
-211	202-3934, MICRODOT	.344	.030		
-212	2524E0114, RAYCHEM				
-213	TWC-78-2			1.55	TAI-138
-214	TWC-124-2				
-215	BL982, TIMES				
-216	BL1242, TIMES				
-217	GC875N24H, GRUMMAN				
-218	EDP221888, RAYCHEM				
-219	252601114, RAYCHEM				
-220	GC875RR1, GRUMMAN			1.80	TAI-168
-221	10514, RAYCHEM				
-222	10513, RAYCHEM				
-223	HRS2-1149, HUGHES				

DASH NO	CABLES ACCOMMODATED	A HEX	B DIM	C MAX	ASSEMBLE PER
-301	GC875GC1, GRUMMAN				
-302	GC875GB1, GRUMMAN				
-303	752BAS314, RAYCHEM				TAI-168
-304					
-305	K17/177-00001, THERMATICS	.344	.030	1.80	
-306	TRC-50-2				TAI-218
	M17/134-00002				
-307	TRC-75-1				TAI-168
-308	TRC-75-2				TAI-218
-309	TRC-50-1				TAI-168

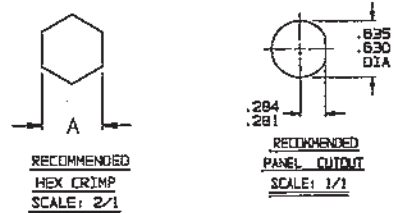
INCH	MM
.005	0.13
.010	0.25
.030	0.75
.140	3.58
.281	7.14
.284	7.21
.344	8.74
.414	10.52
.830	16.00
.635	16.13
.750	19.05
.800	20.32
1.00	25.40
1.25	31.75
1.416	35.97
1.55	39.37
1.75	44.45
1.80	45.72



-202 SHOWN

- 1 SHRINKABLE STRAIN RELIEF AND/OR SHRINKABLE SEALING SLEEVE SUPPLIED LOOSE AS FOLLOWS:
- CABLE GROUPS -201 THROUGH -210, -217 THROUGH -303, -305, -307 & -309
 - 1 SHRINKABLE STRAIN RELIEF (1.00 LONG)
 - 1 SHRINKABLE SEALING SLEEVE (1.25 LONG)
 - CABLE GROUPS -211 THROUGH -216 AND -305 & -308
 - 1 SHRINKABLE STRAIN RELIEF (1.75 LONG)
- MAX PANEL THK .140
 - 4-LUG CONCENTRIC THINAX/TRIAX TR8 FULL CRIMP INSULATED BULKHEAD MOUNT CABLE RECEPTACLE
 - FINISH: TFS-1A (NICKEL)
 - ALL DIM ARE IN INCHES

- EXAMPLE OF COMPLETE MODEL NO:
BJ74CFL-201
BASIC MODEL NO. — CABLE GROUP DASH NO
- EXAMPLE OF COMPLETE PART NO:
3-0203-201
BASIC PART NO. — CABLE GROUP DASH NO



QTY	DESCRIPTION	PART NUMBER	ITEM
TOL UNLESS SPECIFIED .25 ± .300 ± .005 3000± ANGLES	TROMPETER RF connectivity	BJ74CFL	
DWN DKC B-1-97	MATERIAL CODE IDENT	DRAWING NO.	REV
CHK <i>DWN</i> <i>B-3-97</i>	14949	3-0203	P
ENGR	SCALE 4/1	DATE 11/11/86	SHEET 1 OF 2
APPR <i>FW</i> <i>8/12/97</i>			

NEXT ASSY

X-ON Electronics

Largest Supplier of Electrical and Electronic Components

Click to view similar products for [RF Connectors / Coaxial Connectors](#) category:

Click to view products by [Bel Fuse](#) manufacturer:

Other Similar products are found below :

[8915-1511-000](#) [89674-0827](#) [6001-7071-019](#) [6002-7051-003](#) [6002-7551-202](#) [6059674-1](#) [619550-1](#) [630059-000](#) [M39030/3-01N](#) [6500-7071-046](#) [6769](#) [CX050L2AQ](#) [7002-1541-010](#) [7002-1542-011](#) [7004-1512-000](#) [7009-1511-004](#) [7010-1511-000](#) [7029-1511-060](#) [7101-1541-010](#) [7101-1571-002](#) [7145-1521-002](#) [7203-1571-003](#) [7209-1511-011](#) [7210-1511-015](#) [7210-1511-019](#) [73137-5015](#) [73216-2241](#) [73404-2300](#) [7405-1521-005](#) [7405-1521-802](#) [8527](#) [8547](#) [FS11V](#) [877931](#) [8808-1511-001](#) [9049-9513-000](#) [9074-9513-000](#) [9101-9573-002](#) [910A205F](#) [9130-9573-002](#) [PL11SC-026](#) [PL375-33](#) [PL40-5](#) [PL74C-221](#) [PL75MC-217](#) [PL803-7](#) [1200690078](#) [1-201144-1](#) [R107003010W](#) [R110A172100](#)