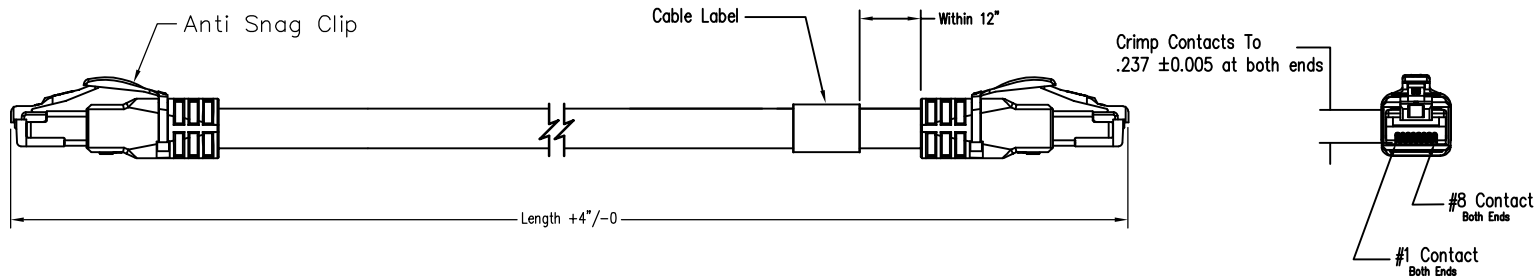


DATE	REV	ECN	APP'D. BY
05/21/19	A0	Released	OE
06/26/19	A1	11403	OE
09/25/19	A2	11450	ADB
11/07/19	A3	11473	BTS



P/N Structure

BM-xSTxxxF-yy

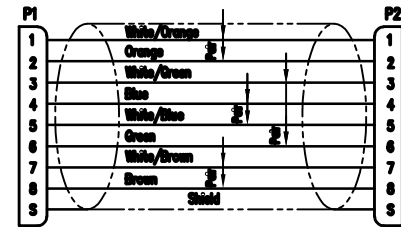
- 01 = TPE Jacket, Over molded boot, Latch Protector.
- UOM (See Part Numbers Reference Table)
- F = Feet
- M = Meters
- Length = xxx (001-100)
- T = Teal
- S = Shielded
- 5 = C5e
- 1 = C6a

LENGTH	Part Number
100 FT	BM-XST100F-01
10 FT	BM-XST010F-01
1 FT	BM-XST001F-01
10 M	BM-XST100M-01
1 M	BM-XST010M-01
0.5 M	BM-XST005M-01

Cable Assembly Family

Notes:

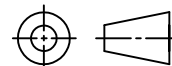
- 1) Each cable assembly to be individually bagged.
- 2) 50µ" Gold plating on contacts
- 3) Cable Construction:
 - Stranded, Tin plated copper
 - 4Pr, SF/UTP.
 - Jacket Material: See Part Number
- 4) 100% Transmission Tested for Performance



568B Standard Wiring Map



THIRD ANGLE PROJECTION



bel

206 Van Vorst Street
 Jersey City, NJ 07302
 +1 201 432 0463
<http://www.belfuse.com>

DO NOT SCALE DRAWING

DRAWING IS SUBJECT TO CHANGE WITHOUT NOTICE

DIMENSIONS: INCHES [METRIC]

UNLESS OTHERWISE SPECIFIED TOLERANCES ARE ±.005 [0.13] ANGLES ARE ± 1°

SHEET NO. 1 OF 1

TITLE:

IP20 Shielded Patchcord Assemblies, C5e & C6a SF/UTP

THIS DRAWING AND THE SUBJECT MATTER SHOWN THEREON ARE CONFIDENTIAL AND THE PROPRIETARY PROPERTY OF BEL FUSE, INC. AND SHALL NOT BE REPRODUCED, COPIED, OR USED IN ANY MANNER WITHOUT PRIOR WRITTEN CONSENT OF BEL FUSE, INC.

DRN BY: TLS DATE 05/03/19

APPD BY: OE DATE 05/21/19

DWG NO. CT999184 REV. A3

X-ON Electronics

Largest Supplier of Electrical and Electronic Components

Click to view similar products for [Ethernet Cables / Networking Cables](#) category:

Click to view products by [Bel Fuse](#) manufacturer:

Other Similar products are found below :

[73-6670-7](#) [73-6680-15](#) [73-7797-25](#) [MCJB2-10P6Q7-120](#) [84909-0204](#) [1200700174](#) [1200860368](#) [E16A06002M030](#) [E200102-009-S1](#)
[AX105346-EW](#) [MT14-187L](#) [17-103530](#) [ERWPAB3002M005](#) [190-038045-01](#) [NK5EPC18RDY](#) [NK5EPC18VLY](#) [NK5EPC18YLY](#)
[NK5EPC1GRY](#) [NK5EPC4Y](#) [NK5EPC6YLY](#) [NK5EPC8BLY](#) [NK5EPC9YLY](#) [1969343-6](#) [C501100010](#) [C501106002](#) [C501106007](#)
[C501106015](#) [C501106025](#) [C601102010](#) [C601104010](#) [C601106007](#) [C601106015](#) [2142758-2](#) [2168427-2](#) [CAT1106007](#) [21949-1](#) [2J1866A](#)
[RJF SFTP 5E 0500](#) [AX100351](#) [MN14CEC/ST](#) [C501100015](#) [C501106004](#) [C501106010](#) [C5F1108007](#) [C601104004](#) [C601106004](#)
[CA21106004](#) [CA21106010](#) [CA21106015](#) [CA21109007](#)