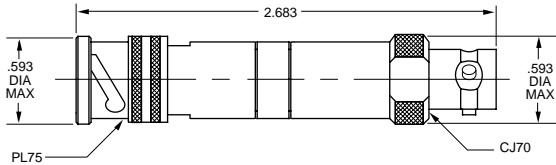
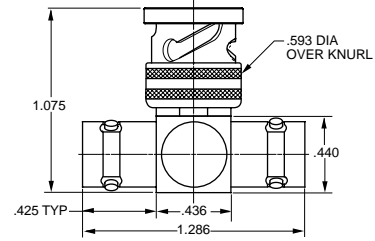


TRB SERIES PAD / PARALLELING / T ADAPTER

TRB SERIES PAD TRB 3-LUG PLUG AND JACK



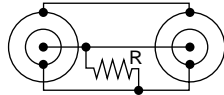
BN73 Shown



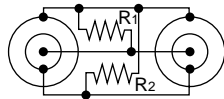
TRB "T" ADAPTER	3-lug	BN73
	2-lug	BN73TL
TRT "T" ADAPTER	4-lug	BN73FL
	Threaded	BN373

PART NUMBER CIRCUITRY SCHEMATIC

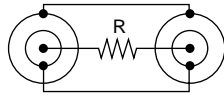
TNG2-R



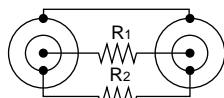
TNG2A-R1-R2



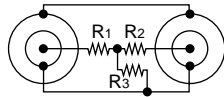
TNG3-R



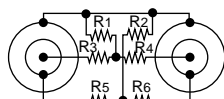
TNG3A-R1-R2



TNG4-R1-R2-R3



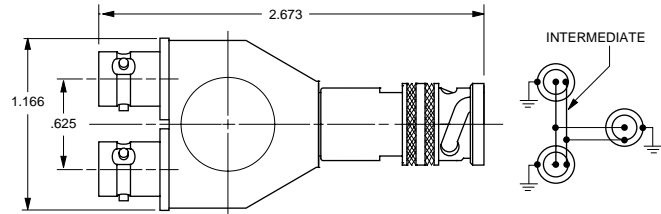
TNG4A-R1-R2-R3-R4-R5-R6



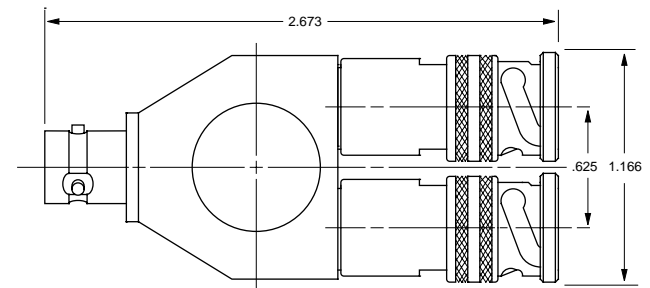
R-Resistance (1/2 W 1%)
Substitute resistive value for each "R_N" unless all values are identical.

FIXED PARALLELING JACKS

TN2A Shown



TN2 Shown



FIXED PARALLELING JACK

Two Plugs, One Jack	3-lug	TN2
	2-lug	TN2TL
	4-lug	TN2FL
	Threaded	TN2T
Two Jacks, One Plug	3-lug	TN2A
	2-lug	TN2TLA
	4-lug	TN2FLA
	Threaded	TN2TA

* Other options available including Random Paralleling.
Contact the factory for more information.

For Adapters, see pages 47-50. For Terminations, see page 45-46. For Impedance Matching Adapters, see page 47.

X-ON Electronics

Largest Supplier of Electrical and Electronic Components

Click to view similar products for [RF Adapters - Tee category](#):

Click to view products by [Bel Fuse manufacturer](#):

Other Similar products are found below :

[R142782000](#) [R114780000W](#) [R142780000W](#) [R143780000](#) [R143782000](#) [344A505](#) [TN2](#) [443A505](#) [R125780000](#) [BNC-TA-JJJ\(40\)](#)
[R125780001](#) [034-1023](#) [ADP-BNCF-2BNCF](#) [73148-5003](#) [31-208-1051](#) [CT3312](#) [53S301-K00N5](#) [CT2411](#) [43_SMB-50-0-2/111_NE](#) [32K301-](#)
[K00L5](#) [46_SMA-50-0-1/111_NE](#) [51S303-K00N5](#) [32S301-K00L5](#) [43_N-50-0-1/133_NE](#) [CPAD705](#) [BN153](#) [031-208-1051](#) [031-70036](#) [082-](#)
[102](#) [112455](#) [112456](#) [112459](#) [112461](#) [112462](#) [112567](#) [112590](#) [122354](#) [122356](#) [132216](#) [132217](#) [142300](#) [172125](#) [172127](#) [172233](#) [21900](#) [31-](#)
[208](#) [31-208-RFX](#) [31-2208](#) [31-8](#) [34-1023](#)