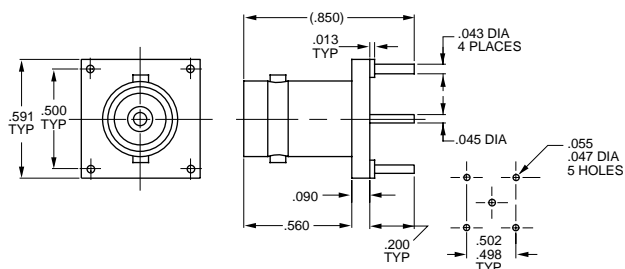


COAX 20/220 SERIES CIRCUIT BOARD JACKS

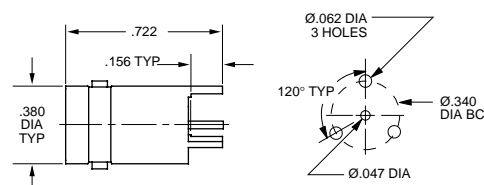
Circuit Board Jacks...

Trompeter manufactures a wide selection of circuit board jacks. Shown below are the most commonly requested designs.

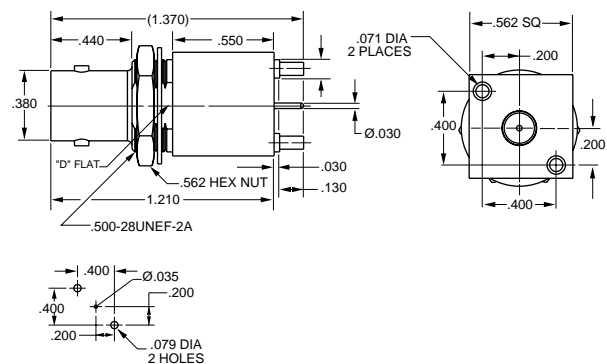
For custom designs, contact the factory or fill out the *Custom Products Request Form* on page 101 and fax it to us.



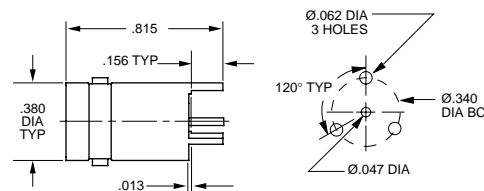
CIRCUIT BOARD JACK
STRAIGHT, 4-LEG 75Ω **UCBJ20F**



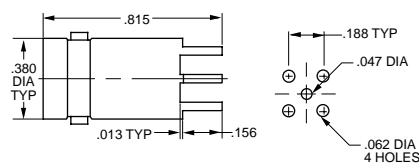
CIRCUIT BOARD JACK
STRAIGHT, 3-LEG 50Ω **CBJ20**



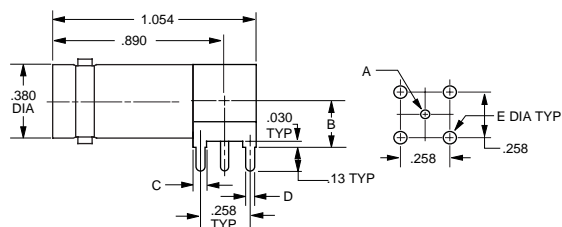
CIRCUIT BOARD BULKHEAD JACK
STRAIGHT 75Ω **UCBBJ23**
Mounting Hole: D3.060



CIRCUIT BOARD JACK
STRAIGHT, 3-LEG 75Ω **UCBJ223**

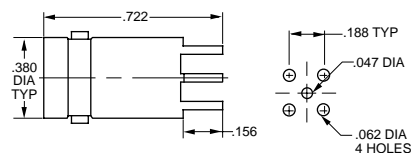


CIRCUIT BOARD JACK
STRAIGHT, 4-LEG 75Ω **UCBJ224**



MODEL NO.	LTR CODE	OHM	A DIM	B DIM	C DIM	D DIM	E DIM
CBJR20A	A	50	.046	.34	.090	.058	.070
UCBJR20A	A	75	.029	.34	.090	.058	.070

CIRCUIT BOARD JACK
RIGHT ANGLE, TALL 50Ω **CBJR20A**
75Ω **UCBJR20A**



CIRCUIT BOARD JACK
STRAIGHT, 4-LEG 50Ω **CBJ22**

COAX 20/220 SERIES CIRCUIT BOARD JACKS

NON-INSULATED CIRCUIT BOARD BULKHEAD JACK
STRAIGHT, 4-LEG 75Ω **UCBBJ29**
Mounting Hole: D3.109

CIRCUIT BOARD JACK
RIGHT ANGLE 50Ω **CBBJR220**

INSULATED CIRCUIT BOARD BULKHEAD JACK
STRAIGHT 50Ω **CBBJ26**
Mounting Hole: D3.156

CIRCUIT BOARD JACK
RIGHT ANGLE 75Ω **UCBJR220**

MODEL NO.	LTR CODE	OHM	A DIM	B DIM	C DIM	D DIM	E DIM
CBBJR26	-	50	.046	.24	.090	.050	.0625
UCBBJR26	-	75	.029	.24	.090	.050	.0625
CBBJR26A	A	50	.046	.34	.090	.058	.070
UCBBJR26A	A	75	.029	.34	.090	.058	.070

(U)CBBJ26/A MAX. PANEL THICKNESS = .156
 (U)CBBJ29/A HAS SAME DIMENSIONS AS (U)CBBJ26/A EXCEPT MAX. PANEL THICKNESS = .179

CIRCUIT BOARD BULKHEAD MOUNTING MINI-WECO PATCH JACK
75Ω RIGHT ANGLE **CBBJR12** B = .24
LONG LEG VERSION **CBBJR12A** B = .34
Mounting Hole: D3.250

RIGHT ANGLE CIRCUIT BOARD BULKHEAD JACK

INSULATED	50Ω	CBBJR26
INSULATED	75Ω	UCBBJR26
NON-INSULATED	50Ω	CBBJR29
NON-INSULATED	75Ω	UCBBJR29

*** Add "A" for tall versions**
Example: CBBJR26A
 Mounting Holes: D3.156 (Insulated), D3.179 (Non-Insulated)

CIRCUIT BOARD MOUNTING MINI-WECO PATCH JACK
75Ω RIGHT ANGLE **CBBJR12** B = .24
LONG LEG VERSION **CBBJR12A** B = .34

"D" mounting holes, see page 45.

X-ON Electronics

Largest Supplier of Electrical and Electronic Components

Click to view similar products for [RF Connectors / Coaxial Connectors](#) category:

Click to view products by [Bel Fuse](#) manufacturer:

Other Similar products are found below :

[8915-1511-000](#) [89674-0827](#) [6001-7071-019](#) [6002-7051-003](#) [6002-7551-202](#) [6059674-1](#) [619550-1](#) [630059-000](#) [M39030/3-01N](#) [6500-7071-046](#) [6769](#) [CX050L2AQ](#) [7002-1541-010](#) [7002-1542-011](#) [7004-1512-000](#) [7009-1511-004](#) [7010-1511-000](#) [7029-1511-060](#) [7101-1541-010](#) [7101-1571-002](#) [7145-1521-002](#) [7203-1571-003](#) [7209-1511-011](#) [7210-1511-015](#) [7210-1511-019](#) [73137-5015](#) [73216-2241](#) [73404-2300](#) [7405-1521-005](#) [7405-1521-802](#) [8527](#) [8547](#) [FS11V](#) [877931](#) [8808-1511-001](#) [9049-9513-000](#) [9074-9513-000](#) [9101-9573-002](#) [910A205F](#) [9130-9573-002](#) [PL11SC-026](#) [PL375-33](#) [PL40-5](#) [PL74C-221](#) [PL75MC-217](#) [PL803-7](#) [1200690078](#) [1-201144-1](#) [R107003010W](#) [R110A172100](#)