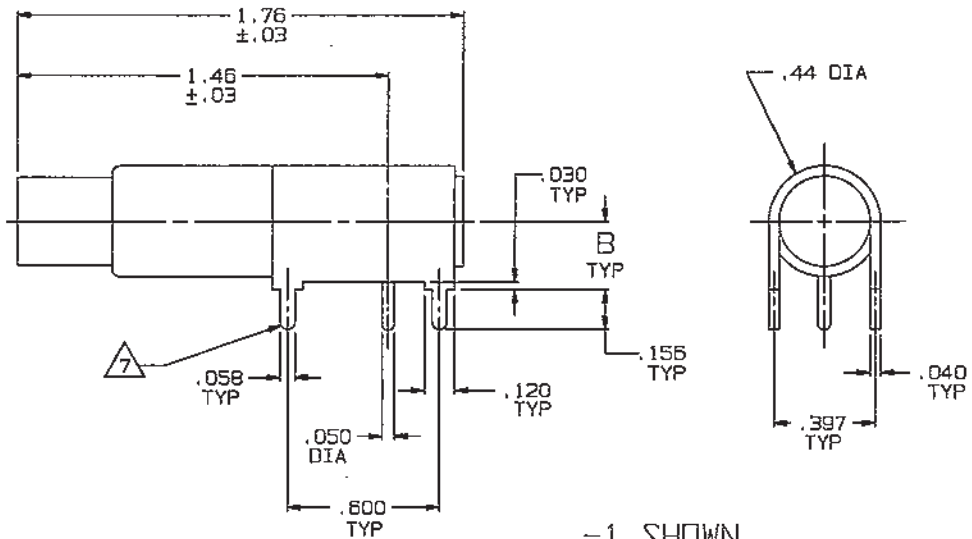
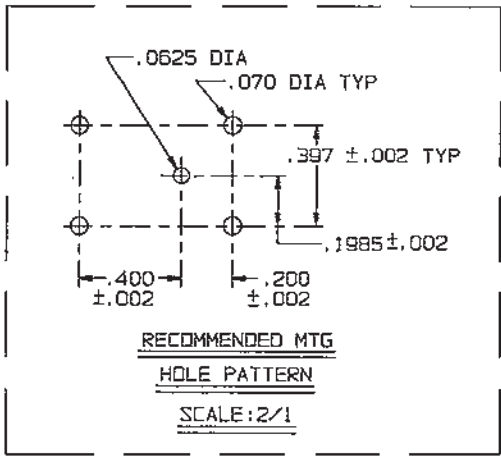


RED INDICATES ORIGINAL

DATA CONTAINED IN THIS DOCUMENT IS PROPRIETARY TO TROMPETER ELECTRONICS INC. AND SHALL NOT BE DISCLOSED, COPIED OR USED FOR PROCUREMENT OR MANUFACTURE WITHOUT EXPRESS WRITTEN PERMISSION.

DASH NO	MODEL NO	LETTER CODE	B DIM
-1	CBJR12	—	.24
-2	CBJR12A	A	.34

REVISIONS			1-0066		SH 1
REV	EO	DESCRIPTION	DWN	APPROVED	DATE
E	12565	MODIFIED NOTE ADDED TIN DIP LEGS, SEE ECO	R L	<i>[Signature]</i>	10-12-98



INCH	MM
.0010	0.03
.002	0.05
.005	0.13
.01	0.25
.030	0.76
.040	1.02
.050	1.27
.058	1.47
.0625	1.59
.070	1.78
.120	3.05
.156	3.96
.1985	5.04
.200	5.08
.24	6.10
.296	7.52
.34	8.64
.397	10.08
.400	10.16
.44	11.18
.600	15.24
1.46	37.08
1.76	44.70

△ PRE-TINNED .0015 MAX THICKNESS WITH SN63 OR EQUIVALENT SOLDER PER QQ-S-571 TO WITHIN .0060 MAX OF SHOULDER, AFTER PLATING

6. EXAMPLE OF COMPLETE PART NO:
 BASIC PART NO 1-0066 -2 DASH NO

5. EXAMPLE OF COMPLETE MODEL NO:
 BASIC MODEL NO CBJR12 A LTR CODE (SEE TABLE)

4. INTERFACE: TFS-7
3. 75 DHM RIGHT ANGLE CIRCUIT BOARD MOUNTING MINIATURE COAXIAL (.296 SIZE) PATCH JACK
2. FINISH: TFS-1A (NICKEL)
1. ALL DIM ARE IN INCHES

-1 SHOWN

QTY	DESCRIPTION		PART NUMBER	ITEM		
TOL UNLESS SPECIFIED			CBJR12/A			
.XX	± .01					
.XXX	± .005					
.XXXX	± .0010					
DWN	R L	10/9/98	MATERIAL	CODE IDENT	DRAWING NO.	REV
CHK	<i>[Signature]</i>	10-12-98	—	14949	1-0066	E
ENGR	<i>[Signature]</i>					
NEXT ASSY	APPR	<i>[Signature]</i>	SCALE 2/1	DATE 8/11/87	SHEET 1C	

X-ON Electronics

Largest Supplier of Electrical and Electronic Components

Click to view similar products for [RF Connectors / Coaxial Connectors](#) category:

Click to view products by [Bel Fuse](#) manufacturer:

Other Similar products are found below :

[8915-1511-000](#) [89674-0827](#) [6001-7071-019](#) [6002-7051-003](#) [6002-7551-202](#) [6059674-1](#) [619550-1](#) [630059-000](#) [M39030/3-01N](#) [6500-7071-046](#) [6769](#) [CX050L2AQ](#) [7002-1541-010](#) [7002-1542-011](#) [7004-1512-000](#) [7009-1511-004](#) [7010-1511-000](#) [7029-1511-060](#) [7101-1541-010](#) [7101-1571-002](#) [7145-1521-002](#) [7203-1571-003](#) [7209-1511-011](#) [7210-1511-015](#) [7210-1511-019](#) [73137-5015](#) [73216-2241](#) [73404-2300](#) [7405-1521-005](#) [7405-1521-802](#) [8527](#) [8547](#) [FS11V](#) [877931](#) [8808-1511-001](#) [9049-9513-000](#) [9074-9513-000](#) [9101-9573-002](#) [910A205F](#) [9130-9573-002](#) [PL11SC-026](#) [PL375-33](#) [PL40-5](#) [PL74C-221](#) [PL75MC-217](#) [PL803-7](#) [980-8666-005](#) [1200690078](#) [1-201144-1](#) [R107003010W](#)