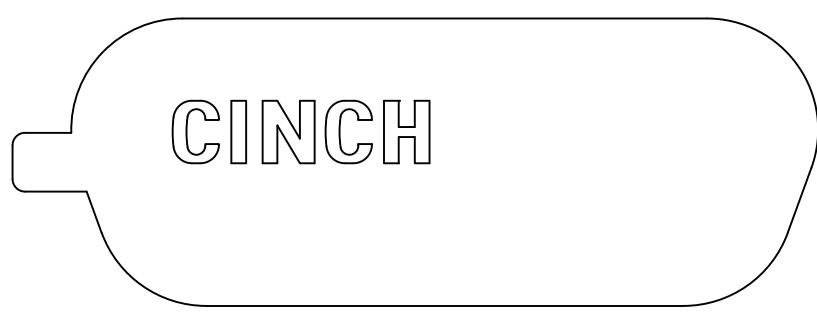
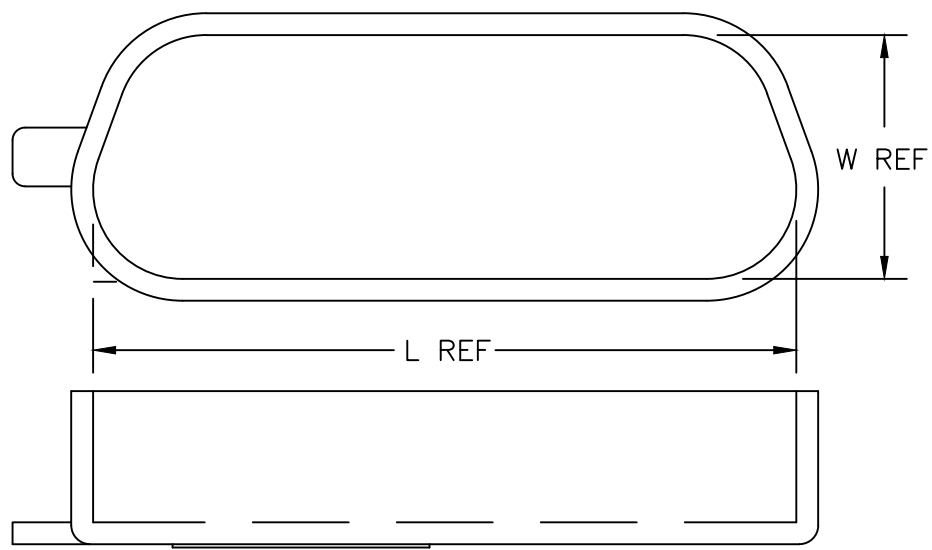


DRAWING REVISIONS			
REV	DOCUMENT	APP	DATE
A	RELEASED	RM	8-11-21

CATALOG NO.	SIZE	COLOR	ITEM NUMBER	L REF	W REF	DESCRIPTION
DCC9P	9 PLUG	BLUE	4741190664	.320	.190	STANDARD
DCCAS9P		PINK	4741190684			ANTI-STATIC
DCC9S	9 SOCKET	RED	4741190665	.375	.245	STANDARD
DCCAS9S		PINK	4741190685			ANTI-STATIC
DCC15P	15 PLUG	BLUE	4741190666	.470	.190	STANDARD
DCCAS15P		PINK	4741190686			ANTI-STATIC
DCC15S	15 SOCKET	RED	4741190667	.525	.245	STANDARD
DCCAS15S		PINK	4741190687			ANTI-STATIC
DCC21P	21 PLUG	BLUE	4741190668	.620	.190	STANDARD
DCCAS21P		PINK	4741190688			ANTI-STATIC
DCC21S	21 SOCKET	RED	4741190669	.675	.245	STANDARD
DCCAS21S		PINK	4741190689			ANTI-STATIC
DCC25P	25 PLUG	BLUE	4741190670	.720	.190	STANDARD
DCCAS25P		PINK	4741190690			ANTI-STATIC
DCC25S	25 SOCKET	RED	4741190671	.775	.245	STANDARD
DCCAS25S		PINK	4741190691			ANTI-STATIC
DCC31P	31 PLUG	BLUE	4741190672	.870	.190	STANDARD
DCCAS31P		PINK	4741190692			ANTI-STATIC
DCC31S	31 SOCKET	RED	4741190673	.925	.245	STANDARD
DCCAS31S		PINK	4741190693			ANTI-STATIC
DCC37P	37 PLUG	BLUE	4741190674	1.020	.190	STANDARD
DCCAS37P		PINK	4741190694			ANTI-STATIC
DCC37S	37 SOCKET	RED	4741190675	1.075	.245	STANDARD
DCCAS37S		PINK	4741190695			ANTI-STATIC
DCC51P	51 PLUG	BLUE	4741190676	.970	.235	STANDARD
DCCAS51P		PINK	4741190696			ANTI-STATIC
DCC51S	51 SOCKET	RED	4741190677	1.025	.290	STANDARD
DCCAS51S		PINK	4741190697			ANTI-STATIC
DCC100P	100 PLUG	BLUE	4741190785	1.430	.280	STANDARD
DCCAS100P		PINK	4741190698			ANTI-STATIC
DCC100S	100 SOCKET	RED	4741190347	1.492	.335	STANDARD
DCCAS100S		PINK	4741190699			ANTI-STATIC



NOTES:
 MATERIAL (BLUE AND RED): THERMOPLASTIC
 MATERIAL (PINK): ANTI-STATIC THERMOPLASTIC

UNITS ENGLISH		AUTOCAD	Cinch	1700 FINLEY RD LOMBARD, IL. 60148
DO NOT SCALE DRAWING	DRAWN BY J. WARRAICH	DATE 8-10-21	TITLE DUST CAP FOR METAL DURACON SHELLS	
UNLESS OTHERWISE SPECIFIED: DIMENSIONS ARE IN INCHES	DESIGN ENGINEER R. MIKLINSKI	8-10-21	MATERIAL SEE NOTES	CONTROL SPEC NUMBER
FILLET/RADIUS .02 MAX.	TOLERANCES .X ±.1 .XX ±.01 XXX ±.005 ANGULAR ±.5°		MATERIAL SPEC NUMBER	FINISH
TOLERANCES AND LIMITS APPLY OVER ADDITIVE FINISH	THIS DOCUMENT IS THE PROPERTY OF CINCH. NEITHER THIS DOCUMENT NOR ANY OF THE INFORMATION CONTAINED IN IT MAY BE DUPLICATED OR DISCLOSED WITHOUT PRIOR WRITTEN CONSENT OF CINCH.		CAD FILE NUMBER DCCXXP~S	DRAWING NUMBER DCCXXP/S
	CAGE IDENT NO. 71785	SIZE B	SCALE NONE	SHEET 1 OF 1

X-ON Electronics

Largest Supplier of Electrical and Electronic Components

Click to view similar products for [D-Sub Standard Connectors](#) category:

Click to view products by [Bel Fuse](#) manufacturer:

Other Similar products are found below :

[56F706-005-LI](#) [56F711-015](#) [LV242999-142T12](#) [015-0341-000](#) [015-0349-000](#) [015-0350-000](#) [015-8544-011](#) [015-8755-001](#) [017041-0005](#)
[020419-0104](#) [020745-0008](#) [609-25P](#) [609-9P](#) [M24308/2-23Z](#) [CT0-24-10SC](#) [CT06E20-22SS](#) [CT0E20-8PS](#) [CT0E22-14SC](#) [CT0F16S-1PS](#)
[CT0F16S-1SC](#) [CT0FA22-1PS](#) [CT0FA22-1SS](#) [CT0M20-7PCAU](#) [CT0P14S-5SXS](#) [CT0P22-14PS](#) [CT0TA16-11SXCA232](#) [CT0U22-](#)
[14PSA206F127](#) [CT1F22-14PC-G9](#) [CT1FC22-2PC](#) [CT1N22-22SS](#) [CT2-10SL-3SC](#) [CT2-14S-2PCA34](#) [CT2-18-10PS-FMLB-D](#) [CT2-18-](#)
[11PCAU](#) [CT2-22-19SC](#) [CT2-22-19SS-A206](#) [CT2-24-28PSF127A206](#) [CT2-28-12SC](#) [CT2-28-12SCA232](#) [CT2-28-12SSA232](#) [CT6-10SL-3SC](#)
[CT6-10SL-4SC](#) [CT6-14S-2SC](#) [CT6-16-12SC](#) [CT6-18-10PSA206](#) [CT6-18-10PSA232](#) [CT6-18-10SSF127A206](#) [CT6-20-15SSA232](#) [CT6-](#)
[9767-18-8-18-4SS](#) [CT6A16S-5PC](#)