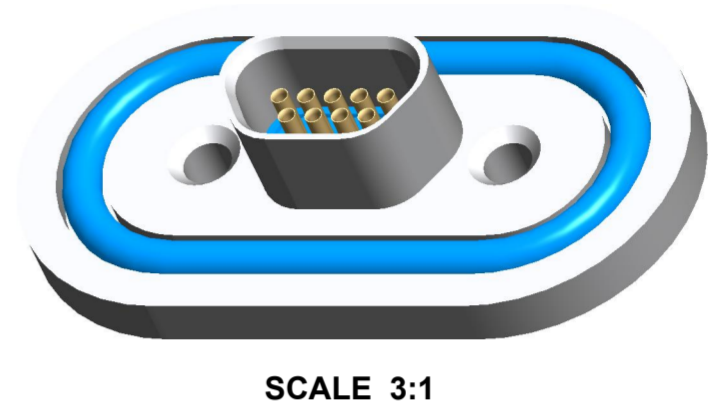
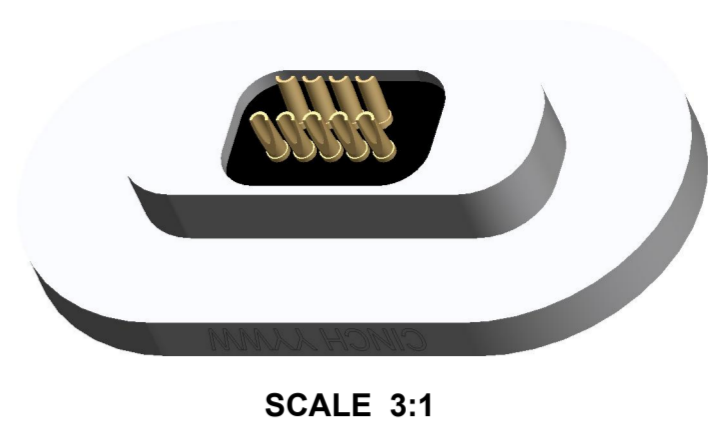
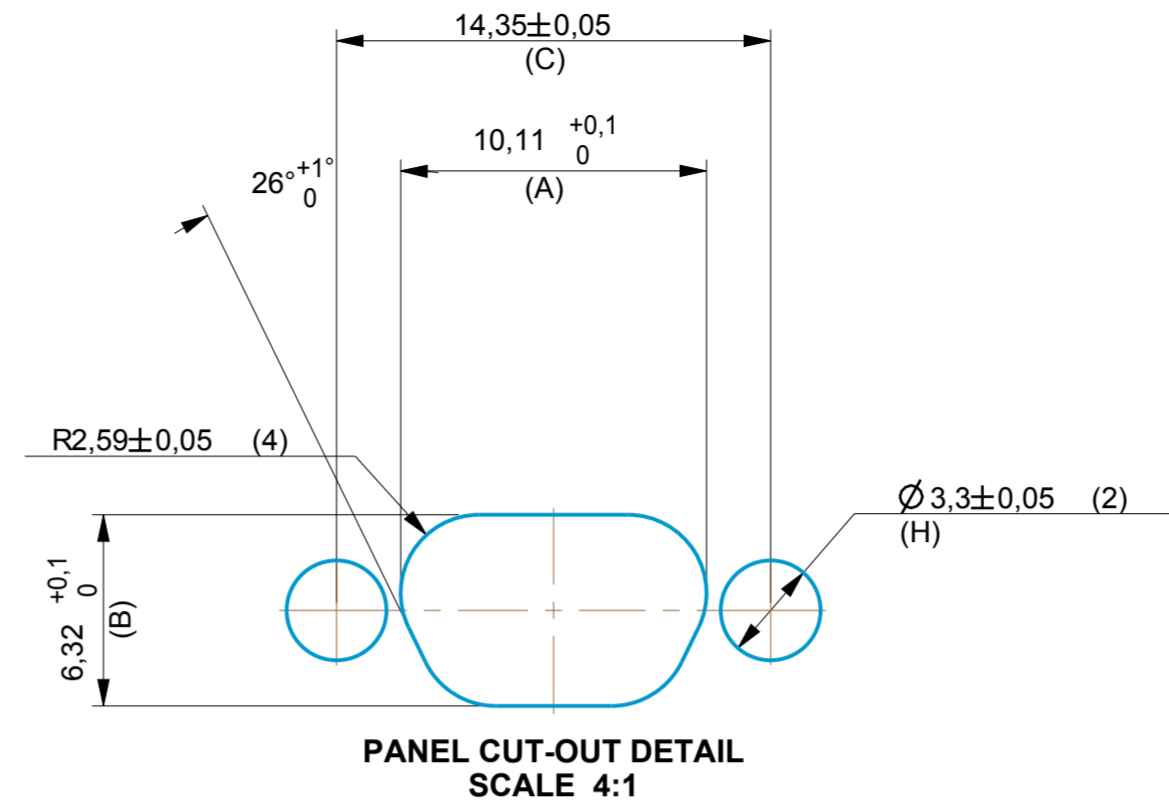
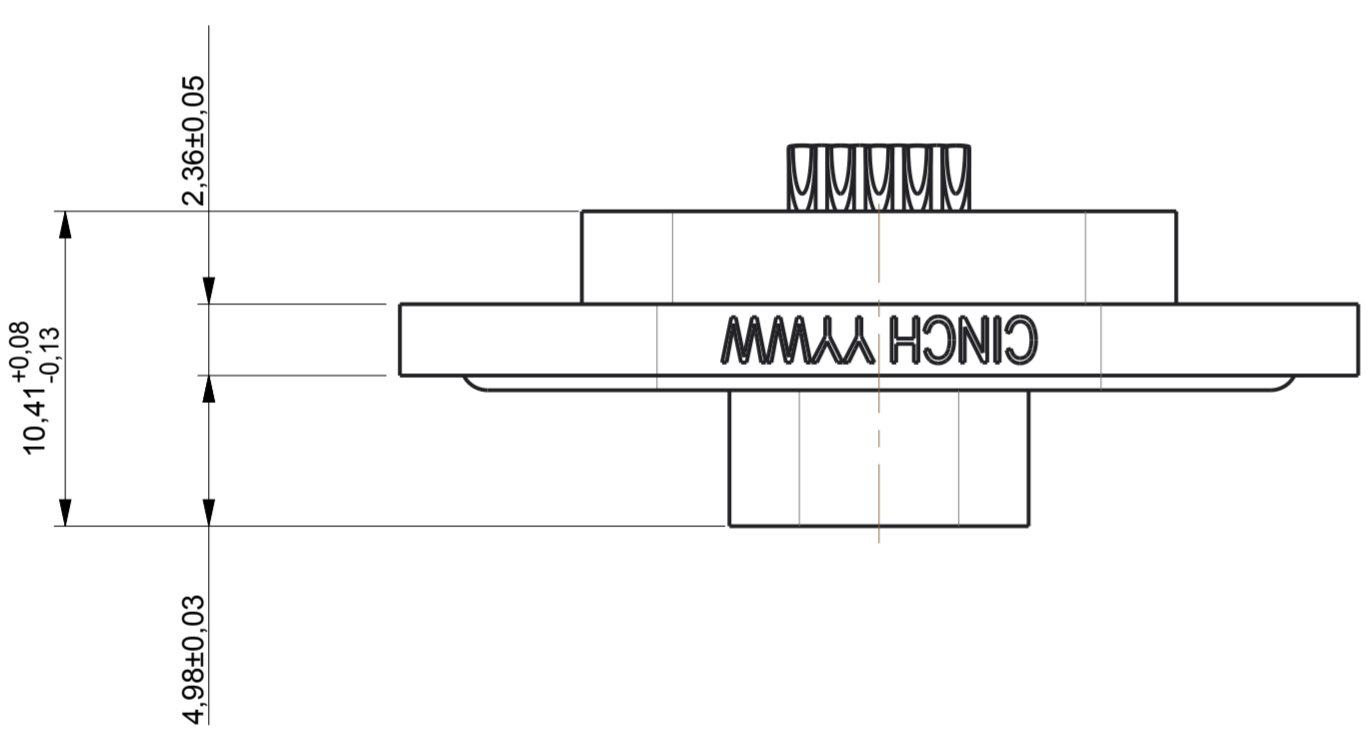
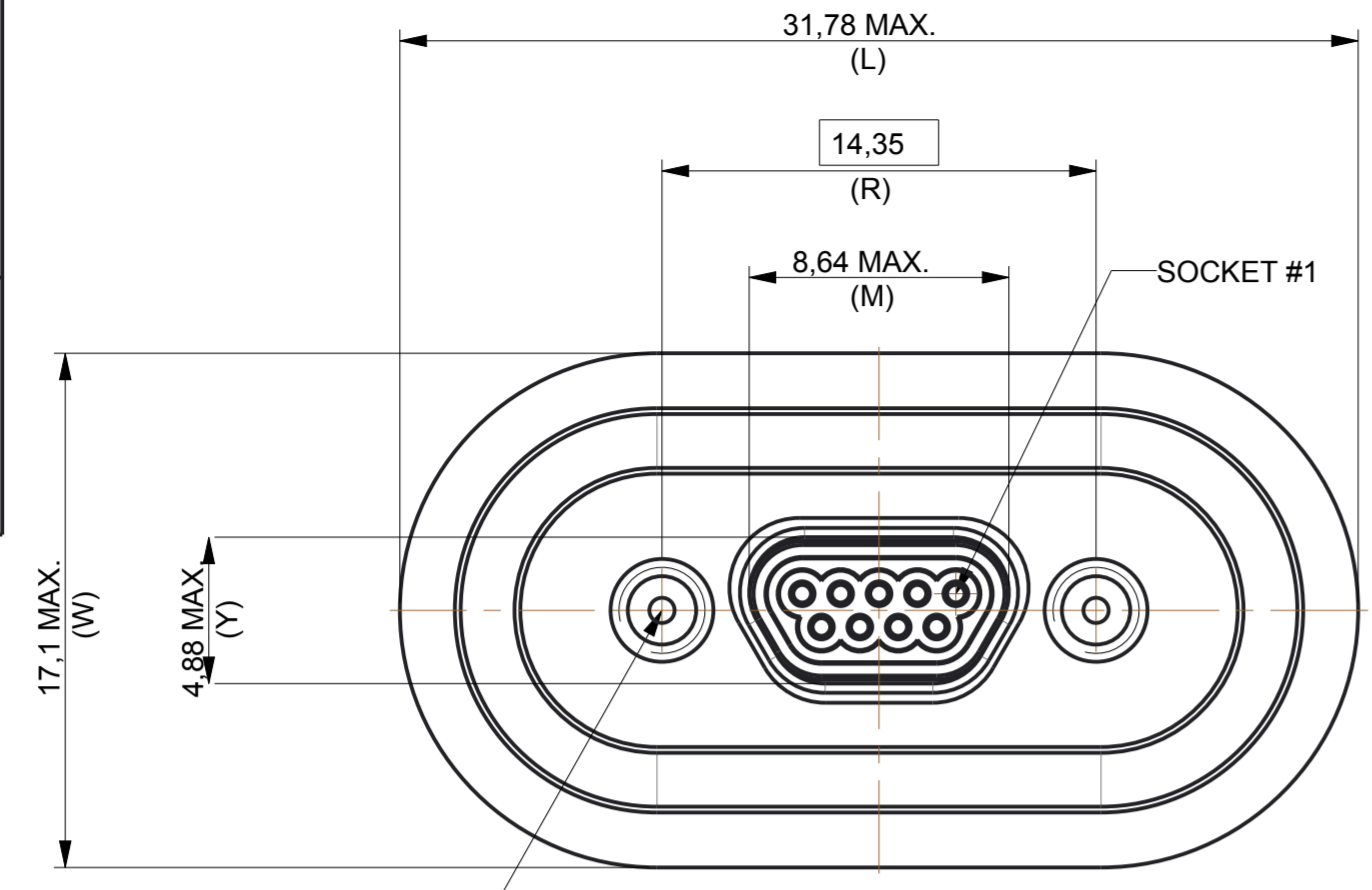


DN000100000000N_CUST	
RELEVANT SPEC	SHT 1 OF 1
MIL-DTL-83513 INTERFACE	EX No.
PROJ MODEL FILE	NA
DN000100000000N	
IF IN DOUBT - ASK	
ALL DIMENSIONS ARE IN mm	

ISSUE GROUPS	A
--------------	---



4-40 UNC - 2B TAP ∇ 4,000
#43 DRILL (2,261) ∇ 4,471



PART NUMBER	A	B	C	H	DESCRIPTION2		
DN0000809	10,11	6,32	14,35	3,30	9W REVERSE MOUNT PANEL		
DN0000815	13,92	6,32	18,16	3,30	15W REVERSE MOUNT PANEL		
DN0000821	17,73	6,32	21,97	3,30	21W REVERSE MOUNT PANEL		
DN0000825	20,27	6,32	24,51	3,30	25W REVERSE MOUNT PANEL		
DN0000831	24,08	6,32	28,34	3,30	31W REVERSE MOUNT PANEL		
DN0000837	27,89	6,32	32,13	3,30	37W REVERSE MOUNT PANEL		
DN0000851	26,62	7,42	30,86	3,30	51W REVERSE MOUNT PANEL		
DN0000810	39,00	8,52	45,72	4,10	100W REVERSE MOUNT PANEL		
PART NUMBER	SALES_CODE	L_MAX	M_MAX	R_BASIC	W_MAX	Y_MAX	DESCRIPTION2
DN000100000900N	DCDH-9SSBN	31,78	8,64	14,35	17,10	4,88	9W SOLDERPOT SOCKET ASSEMBLY
DN000100001500N	DCDH-15SSBN	34,26	12,45	18,16	17,10	4,88	15W SOLDERPOT SOCKET ASSEMBLY
DN000100002100N	DCDH-21SSBN	39,25	16,26	21,97	17,10	4,88	21W SOLDERPOT SOCKET ASSEMBLY
DN000100002500N	DCDH-25SSBN	41,76	18,80	24,51	17,10	4,88	25W SOLDERPOT SOCKET ASSEMBLY
DN000100003100N	DCDH-31SSBN	44,23	22,61	28,32	17,10	4,88	31W SOLDERPOT SOCKET ASSEMBLY
DN000100003700N	DCDH-37SSBN	49,22	26,42	32,13	17,10	4,88	37W SOLDERPOT SOCKET ASSEMBLY
DN000100005100N	DCDH-51SSBN	48,60	25,15	30,86	18,20	5,99	51W SOLDERPOT SOCKET ASSEMBLY

NOTES:

- DIMENSIONS ARE FOR REFERENCE ONLY.
- CUSTOMER DRAWING ONLY. NOT USED FOR CINCH MANUFACTURE.
- PART MARK CONNECTORS WITH CINCH AND DATE-CODE.
- CONNECTOR TO BE HERMETICALLY TESTED TO 1×10^{-8} cc/sec @ 1 ATMOSPHERE HELIUM.

MATERIAL SPECIFICATIONS:

- CONNECTOR SHELL: >ASTM ALLOY< SAE-AMS-QQ-A-250. ELECTROLESS Ni PER SAE-AMS-C-26074.
- CONTACT (FEMALE SOCKET): >Cu ALLOY<. Au PER MIL-DTL-45204, TYPE 1.
- INSULATOR: >PBT< PER MIL-M-24519.
- INTERFACIAL GASKET: >FVMQ< PER MIL-R-25988 OR >PMQ< PER ZZ-R-765.
- HARDWARE: >303SS< PASSIVATE DIP PER SAE-AMS-QQ-P-35. HARDWARE TO BE PURCHASED SEPERATELY TO SUIT PANEL THICKNESS.
- DUSTCAP: >LDPE< OR ANTI-STATIC >HDPE<.

GENERAL SPECIFICATIONS:

- ALL OTHER DETAILS AND DIMENSIONS TO BE AS PER MIL-DTL-83513 OR CINCH HERMETIC DURA-CON CATALOGUE.

THIS DRAWING IS COPYRIGHT AND IS ISSUED ON CONDITION IT IS NOT COPIED, REPRODUCED OR DISCLOSED TO A THIRD PARTY WITHOUT THE CONSENT IN WRITING OF Cinch CONNECTIVITY SOLUTIONS LTD. ATTENTION IS DRAWN TO THE FACT THE ARTICLE DISCLOSED MAY BE COVERED BY BRITISH OR FOREIGN PATENTS, GRANTED OR PENDING OR REGISTERED DESIGN.

APPD	DATE	PRELIM.	PNR	ECN	ISSUE	QTY
	02-Feb-17				1	
TITLE						FINISH/MATL
HERMEYC MICROMINIATURE						
9-51W SOCKET ASSEMBLY						
SOLDERPOT						
DATE 02-Feb-17 SCALE 4:1						
MATERIAL SPECIFICATION						
DRN MBARRACLOUGH						
RAW MATL						
FINISHED HARDNESS						
FINISH TREATMENT						
COLOUR						
GEN. TOLERANCES						TOOL R MAX.
2 DEC. PL ±0.1						0.18
1 DEC. PL ±0.2						
0 DEC. PL ±0.5						
ANGULAR ±1						

X-ON Electronics

Largest Supplier of Electrical and Electronic Components

Click to view similar products for [D-Sub Micro-D Connectors](#) category:

Click to view products by [Bel Fuse](#) manufacturer:

Other Similar products are found below :

[M24308/4-6F](#) [65-1920-15](#) [M83513/03-A10N](#) [M83513/03-G12N](#) [M83513/04-D11C](#) [M83513/04-G04C](#) [M83513/22-D01NP](#) [664020C06F060](#)
[6R2004A30F015](#) [6R4006A28A120](#) [704002A03F200](#) [705001A13F120](#) [71-147714-19P](#) [7-1532020-5](#) [748567-1-P](#) [MDB1-9SH001](#) [MDM-](#)
[15PBS-L58](#) [MDM-15PCBRM7T](#) [MDM-15PH001M7-A174](#) [MDM-15PH003B-A174](#) [MDM-15SH001L](#) [MDM-15SH003A](#) [MDM-15SH004B](#)
[MDM-15SH048B](#) [MDM-25PH003B-A174](#) [MDM-25SH003F](#) [MDM-25SH003K](#) [MDM-37PH006L-A174](#) [MDM-37SH003K](#)
[MDM51PH016FA174](#) [MDM-51PSF](#) [MDM-51SH046B](#) [MDM-9SH001P](#) [MDM-9SH006B](#) [790-027SH-10P4MEP](#) [790-041PJ-25P2MPA](#) [790-](#)
[043PJ-7P7MPB](#) [791-004SH-66MSA](#) [7R3A00A19A1201](#) [7R5006A19A120](#) [803000C02M020](#) [803001B02M040](#) [803001D01M040](#)
[8030N1A09M020](#) [804001B03M100](#) [804006B03M100](#) [804006C02M030](#) [MLDM2L-21SCBRP-.110](#) [85043GULSR](#) [883020E03M030](#)