

NOTES:

1. SPECIFICATIONS:

ELECTRICAL:
 WITHSTANDING VOLTAGE: MINIMUM 1250 V RMS @ SEA LEVEL
 INSULATION RESISTANCE: INITIAL 5000 MEGOHMS MAXIMUM,
 1000 MEGOHMS MIN. AFTER ENVIRONMENTAL TESTING.
 CONTACT RATING: 5 AMPS
 CONTACT RESISTANCE: 2.7 MILLIOHMS MAX.

MATERIALS:
 INSULATOR: WHITE UL94V-0 RATED GLASS FILLED POLYESTER
 CONTACT: COPPER ALLOY
 CONTACT AREA PLATING: GOLD OVER NICKEL,
 CONNECTOR SHELL: STEEL, PLATING ZINC WITH CLEAR CHROMATE.

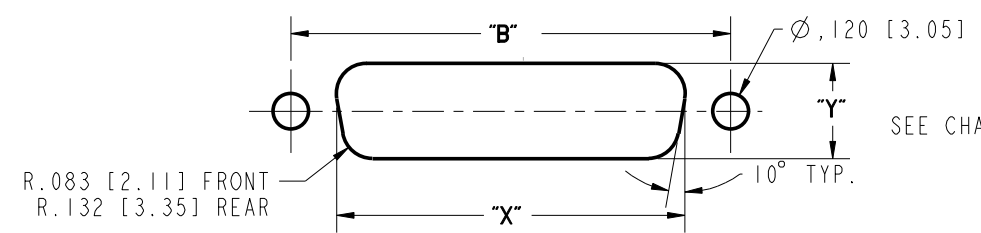
ENVIRONMENTAL:
 OPERATING TEMPERATURE: -65°C TO +125°C

TERMINATION:
 SOLDER POTS ACCOMODATE # 20 AWG STRANDED WIRE MAX.

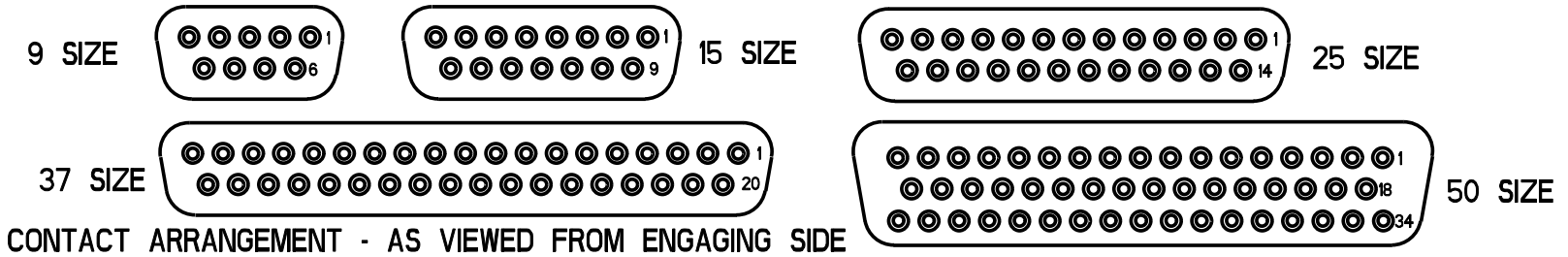
2. DIMENSIONS IN [] ARE IN MILLIMETERS.

DRAWING REVISIONS			
REV	DOCUMENT	APP	DATE
A	DO 05-1094	AKB	1/7/06
B	ECN 06E468		

NUMBER OF POSITIONS	SELECTIVE GOLD FLASH PLATING (.120" [3.05] MTG. HOLES)		DIMENSION							FRONT MOUNTING HOLE DIMENSIONS		REAR MOUNTING HOLE DIMENSIONS	
	PART NO.	FACTORY NO.	"A"	"B"	"C"	"D"	"E"	"F"	"G"	"X"	"Y"	"X"	"Y"
9	DEH-9S	702 11 09 001	1.213 [30.81]	.984 [24.99]	.640 [16.26]	.308 [7.82]	.494 [12.55]	.759 [19.28]	.422 [10.72]	.874 [22.20]	.513 [13.03]	.806 [20.47]	.449 [11.40]
15	DAH-15S	702 11 15 001	1.541 [39.14]	1.312 [33.32]	.968 [24.59]			1.083 [27.51]		1.202 [30.53]		1.134 [28.80]	
25	DBH-25S	702 11 25 001	2.088 [53.04]	1.852 [47.04]	1.508 [38.30]			1.629 [41.38]		1.743 [44.27]		1.674 [42.52]	
37	DCH-37S	702 11 37 001	2.729 [69.32]	2.500 [64.50]	2.156 [54.76]			2.272 [57.71]		2.391 [60.73]		2.326 [59.08]	
50	DDH-50S	702 11 50 001	2.635 [66.93]	2.406 [61.11]	2.062 [52.37]			.420 [10.67]		.605 [15.37]		2.178 [55.32]	



RECOMENDED MTG.HOLE LAYOUT
 SEE CHART FOR FRONT AND REAR MTG.DIMENSIONS



ROHS COMPLIANT

UNITS	ENGLISH	PRO/E	MODELED BY: V.SKUZA
DO NOT SCALE DRAWING	DRAWN BY V.SKUZA	DATE 06/10/05	TITLE D-SUB SOLDER CUP CONNECTOR SOCKET ASS'Y (.120" MTG HOLES)
	DESIGN ENGINEER A.BALI	06/10/05	MATERIAL
	DESIGN ENGINEERING MGR. A.SHAH	07/09/05	MATERIAL SPEC NUMBER
	MFG. ENGINEERING J.OCEGUERA	07/07/05	FINISH
	QUALITY ASSURANCE A.VAZQUEZ	07/06/05	PROJECT NUMBER C14716
THIS DOCUMENT IS THE PROPERTY OF CINCH. NEITHER THIS DOCUMENT NOR ANY OF THE INFORMATION CONTAINED IN IT MAY BE DUPLICATED OR DISCLOSED WITHOUT PRIOR WRITTEN CONSENT OF CINCH.	CAD FILE NUMBER DXH-XXS	DRAWING NUMBER D#H-XXS	SCALE 1:1
	CAGE IDENT NO. SIZE 71785 B	SHEET 1 OF 1	

X-ON Electronics

Largest Supplier of Electrical and Electronic Components

Click to view similar products for [D-Sub Mixed Contact Connectors](#) category:

Click to view products by [Bel Fuse](#) manufacturer:

Other Similar products are found below :

[173114-0234](#) [790-025SF-5P5NMN](#) [790-025SJ-7P7NML](#) [DBM9W4SN](#) [9030M2MAT99X90X](#) [L717TWB5W5P3R](#) [L717TWB5W5PA514](#)
[L717TWB5W5PRM84](#) [L717TWP3W3P](#) [LCC17A3W3PEAN1](#) [3003W3PXX56N40X](#) [3005W5PXX99A30X](#) [3005W5PXX99E40X](#)
[3005W5SXX99A30X](#) [3005W5SXX99E40X](#) [3007W2SCT56N40X](#) [3013W3SCM99A10X](#) [3017W2SCT56N40X](#) [3036W4PCM41A10X](#)
[3036W4SCM99A10X](#) [212522-7](#) [3003W3PXX43A10X](#) [3005W5PXX49E40X](#) [3005W5PXX88N40X](#) [3007W2PAR71E20X](#)
[3008W8SXX57A30X](#) [3009W4PCT57P20X](#) [3011W1SXX99A10X](#) [3013W3PCM99A10X](#) [3013W6SXX99A10X](#) [3017W2PAR69E20X](#)
[3017W2SAR69C40X](#) [3024W7SCM99A10X](#) [302W2CPXX56N40X](#) [3043W2SAR71E40X](#) [321WA4PCM99A10X](#) [321WA4PXX99A60X](#)
[321WA4SCT56N40X](#) [3F3SSC22S41A30X](#) [5604805](#) [L717TWA7W2PP2SY3R](#) [DAM-3W3P-A159](#) [DBM9W4PN](#) [421WA4PCR50E20X](#)
[DDMZ36H4SNA197](#) [09691009009](#) [09691100022500](#) [09693009176](#) [09692009147](#) [09693909015](#)