

# RED INDICATES ORIGINAL

DASH NO	FIG NO	CABLE ACCOMMODATED	A DIM	B DIM	C HEX	D DIA	E FLATS	ASSEMBLE PER
-003		RG-174, -188, -316	2.730 2.450	1.500 1.220				
-004		RG-179, RG-187	2.730 2.450	1.500 1.220				
-008		RG-195, RG-180 421-111 ESSEX	2.730 2.450	1.500 1.220	.178			
-009		8218 BELDEN YR23023 BELDEN 21-597 ESSEX	2.730 2.450	1.500 1.220				
-010	1,2	RG-122	2.730 2.450	1.500 1.220		.516	.437	
-011		RG-58, -141, -303 21-597 ESSEX	2.730 2.450	1.500 1.220	.213			
-012		RG-55, -142, -223 RG-400	2.730 2.450	1.500 1.220				
-013		RG-59, RG-62	2.730 2.450	1.500 1.220				
-013A		TCC-75-2	2.730 2.450	1.500 1.220	.255			
-014		8212 BELDEN	2.730 2.450	1.500 1.220				TAI-117
-015		RG-71 730A AT&T	2.730 2.450	1.500 1.220	.290			
-016	1	724 AT&T 8281 BELDEN	2.730 2.450	1.500 1.220	.324	.578	.500	
-017		RG-6	2.730 2.450	1.500 1.220	.340			
-018	1,2	9268 BELDEN	2.730 2.450	1.500 1.220		.516	.437	
-019		8279 BELDEN	2.730 2.450	1.500 1.220				
-020	1	9248 BELDEN	2.730 2.450	1.500 1.220	.290	.578	.500	
-023		89108 BELDEN	2.730 2.450	1.500 1.220	.255	.516	.437	
-025	1,2	734A AT&T	2.730 2.450	1.500 1.220	.255			
-026		735A AT&T	2.730 2.450	1.500 1.220	.178	.516	.437	
-027		KS19224L2 AT&T	2.730 2.450	1.500 1.220	.324			

DWG SIZE C  
DATA CONTAINED IN THIS DOCUMENT IS PROPRIETARY TO TROMPETER ELECTRONICS INC. AND SHALL NOT BE DISCLOSED, COPIED OR USED FOR PROCUREMENT OR MANUFACTURE WITHOUT EXPRESS WRITTEN PERMISSION.

REVISIONS			1-0453	SH 1C
REV	ED	DESCRIPTION	DWN	APPROVED
V	13436	ADDED -023 TO CABLES ACCOMMODATED AND -023/-W023 TO BDM; SEE ECO	DKC	5/24/60

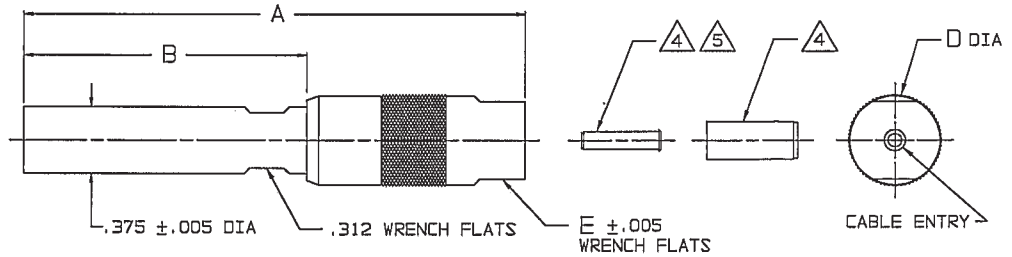


FIG 1  $\Delta$   
-003 SHOWN

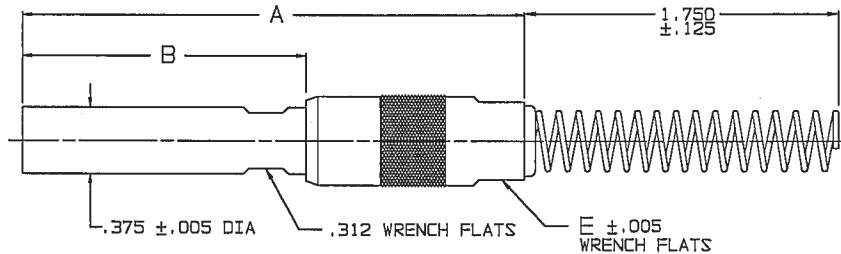


FIG 2  $\Delta$   
-003 SHOWN

INCH	MM
.005	0.13
.030	0.76
.070	1.78
.090	2.29
.125	3.18
.178	4.52
.213	5.41
.255	6.48
.290	7.37
.312	7.92
.324	8.23
.340	8.65
.375	9.53
.437	11.10
.500	12.70
.516	13.11
.578	14.68
1.220	30.99
1.500	38.10
1.750	44.45
2.450	62.23
2.730	69.34

$\Delta$  IF BEND RELIEF SPRING REQUIRED (FIG 2) ADD SUFFIX "BR" TO CABLE GROUP DASH NO (NOT AVAILABLE FOR CABLE GROUPS -015 THRU -W017, -020, -W020, -027 & -W027)

6. DASH NO DENDTES CABLE GROUP

$\Delta$  SLEEVE REQUIRED ON -003 THRU-W004 ONLY

$\Delta$  SLEEVE AND CRIMP SLEEVE ARE SUPPLIED LOOSE

3. COAXIAL STD .375 SIZE T00L CRIMP PATCH PLUG BOTH RCA/AT&T VERSIONS (.070/.090 PIN CONTACT DIA)

2. FINISH: TFS-1A (NICKEL)

1. ALL DIM ARE IN INCHES

8. EXAMPLE OF COMPLETE MODEL NO:  
PL1WC-003 BR

BASIC MODEL NO  $\Delta$   
PL1C = 50 OHM (.070)  
PL1WC = 75 OHM (.090) DASH NO

RECOMMENDED  
HEX CRIMP  
SCALE: NONE

11-03	QTY	DESCRIPTION	PART NUMBER	ITEM
11-02	TOL UNLESS SPECIFIED			
105-0998	.XX ±			
105-0972	.XXX ± .030			
1-0319	XXXX			
1-0304	ANGLE ±			
1-0301	ENGR			
NEXT ASSY	APPR			

1-0319	DWN	DKC	5-12-00	MATERIAL	CODE IDENT	DRAWING NO.	REV
1-0304	CHK	DKC	5-12-00		14949	1-0453	V
1-0301	ENGR						
NEXT ASSY	APPR			SCALE 2/1	DATE 4-30-79	SHEET 1C	

## X-ON Electronics

Largest Supplier of Electrical and Electronic Components

*Click to view similar products for [RF Connectors / Coaxial Connectors](#) category:*

*Click to view products by [Bel Fuse](#) manufacturer:*

Other Similar products are found below :

[8915-1511-000](#) [89674-0827](#) [6001-7071-019](#) [6002-7051-003](#) [6002-7551-202](#) [6059674-1](#) [619550-1](#) [630059-000](#) [M39030/3-01N](#) [6500-7071-046](#) [6769](#) [CX050L2AQ](#) [7002-1541-010](#) [7002-1542-011](#) [7004-1512-000](#) [7009-1511-004](#) [7010-1511-000](#) [7029-1511-060](#) [7101-1541-010](#) [7101-1571-002](#) [7145-1521-002](#) [7203-1571-003](#) [7209-1511-011](#) [7210-1511-015](#) [7210-1511-019](#) [73137-5015](#) [73216-2241](#) [73404-2300](#) [7405-1521-005](#) [7405-1521-802](#) [8527](#) [8547](#) [FS11V](#) [877931](#) [8808-1511-001](#) [9049-9513-000](#) [9074-9513-000](#) [9101-9573-002](#) [910A205F](#) [9130-9573-002](#) [PL11SC-026](#) [PL375-33](#) [PL40-5](#) [PL74C-221](#) [PL75MC-217](#) [PL803-7](#) [1200690078](#) [1-201144-1](#) [R107003010W](#) [R110A172100](#)