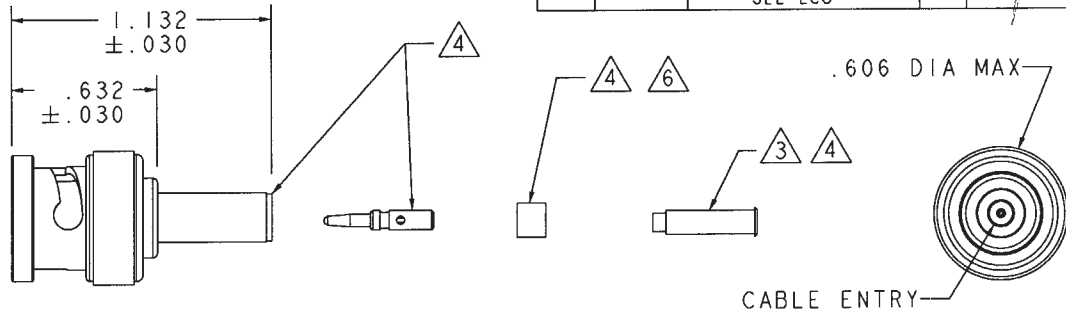


RED INDICATES ORIGINAL

DASH NO	CABLES ACCOMMODATED	A HEX	ASSEMBLE PER
-001	RG-178, -196	.178	TAI-A118
-002	HEWLETT PACKARD 8120-1107	.197	
-003	RG-174, -188, -316	.178	
-004	RG-179, -187		
-005	MIL 177094		
-006	GC875GPI, GRUMMAN DBL-SHLD RG-188	.197	
-007	275-3991, MICRODOT		
-008	RG-195, -180 421-111, ESSEX 8218, BELDEN	.178	
-009	YR23023 BELDEN 21-597, ESSEX		
-010	RG-122		
-011	RG-58; -141; -303 21-537 ESSEX, TCC-50-2	.213	TAI-C118
-012	RG-55, -142, -223 RG-400		
-013	RG-59		
-013A	TCC-75-2	.255	TAI-A118
-013B	RG-62		
-014	8212, BELDEN		TAI-C118
-015	730A, AT&T	.290	
-015A	RG-71		TAI-A118
-016	724, AT&T 8281, BELDEN	.324	
-017	RG-6	.344	
-018	9268, BELDEN	.255	
-019	8279, BELDEN		
-020	9248, BELDEN	.290	
-021	88240, BELDEN	.213	
-022	88241, 89269, BELDEN	.255	
-023	89108, BELDEN		
-024	89120, BELDEN	.290	
-025	734A, AT&T	.255	
-026	735A, AT&T		
-027	KS19224L2, AT&T	.178	

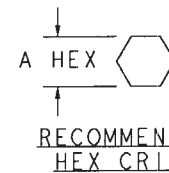
DATA CONTAINED IN THIS DOCUMENT IS PROPRIETARY TO TROMPETER ELECTRONICS INC. AND SHALL NOT BE DISCLOSED, COPIED OR USED FOR PROCUREMENT OR MANUFACTURE WITHOUT EXPRESS WRITTEN PERMISSION

REVISIONS				1-0442	SH 1
REV	ECO NO.	DESCRIPTION	DWN	APPROVED	DATE
AA	12007	ADDED 8-1613 TO DASH NO'S -009, -024, -026, & -027; SEE ECO	AAH	<i>[Signature]</i>	5-20-77



- 8 FOR CABLE GROUP -011 SUPPLY 1 EA ACC011 FOR CABLE GROUP -013, -013A & -013B SUPPLY 1 EA ACC013 MAY BE ASSEMBLED TO CABLE/CONNECTOR ASSY USING 3M SCOTCHGRIP NO 1099 PLASTIC ADHESIVE OR EQUIV
- 7 IF ACCESSORY PLASTIC STRAIN RELIEF REQUIRED ADD SUFFIX "BT" TO MODEL NO (ONLY AVAILABLE WITH CABLE GROUPS -011, -013, -013A, & -013B)
- 6 CONTACT SUPPORT BUSHING REQUIRED ON -0138, -015A & -022 ONLY
- 5. RF COAXIAL BNC FULL CRIMP CABLE PLUG (EQUIV MIL-CAT "D")
- 4 PIN, SLEEVE, CRIMP SLEEVE & CONTACT SUPPORT BUSHING ARE SUPPLIED LOOSE
- 3 SLEEVE REQUIRED ON -001 THRU -007 ONLY

INCH	MM
.005	0.13
.030	0.76
.178	4.52
.197	5.00
.213	5.41
.255	6.48
.290	7.37
.324	8.23
.344	8.73
.606	15.39
.632	16.05
1.132	28.75



2. FINISH: TFS-1A (TOTAL BUILD-UP .000180-.000450) (NICKEL)

1. ALL DIM ARE IN INCHES

QTY	DESCRIPTION	PART NUMBER	ITEM			
TOL UNLESS SPECIFIED		PL220				
.XX ±						
.XXX ± .005						
.XXXX ±						
ANGLE ±						
DWG	AAH	5-7-97	MATERIAL	CODE IDENT	DRAWING NO.	REV
CHK	<i>[Signature]</i>	<i>[Signature]</i>		14949	1-0442	AA
ENGR	<i>[Signature]</i>					
APPR	<i>[Signature]</i>	5-13-77	SCALE 2/1	DATE 2-1-77	SHEET 1 C	

X-ON Electronics

Largest Supplier of Electrical and Electronic Components

Click to view similar products for [RF Connectors / Coaxial Connectors](#) category:

Click to view products by [Bel Fuse](#) manufacturer:

Other Similar products are found below :

[8915-1511-000](#) [89674-0827](#) [6001-7071-019](#) [6002-7051-003](#) [6002-7551-202](#) [6059674-1](#) [619550-1](#) [630059-000](#) [M39030/3-01N](#) [6500-7071-046](#) [6769](#) [CX050L2AQ](#) [7002-1541-010](#) [7002-1542-011](#) [7004-1512-000](#) [7009-1511-004](#) [7010-1511-000](#) [7029-1511-060](#) [7101-1541-010](#) [7101-1571-002](#) [7145-1521-002](#) [7203-1571-003](#) [7209-1511-011](#) [7210-1511-015](#) [7210-1511-019](#) [73137-5015](#) [73216-2241](#) [73404-2300](#) [7405-1521-005](#) [7405-1521-802](#) [8527](#) [8547](#) [FS11V](#) [877931](#) [8808-1511-001](#) [9049-9513-000](#) [9074-9513-000](#) [9101-9573-002](#) [910A205F](#) [9130-9573-002](#) [PL11SC-026](#) [PL375-33](#) [PL40-5](#) [PL74C-221](#) [PL75MC-217](#) [PL803-7](#) [1200690078](#) [1-201144-1](#) [R107003010W](#) [R110A172100](#)