

RED INDICATES ORIGINAL

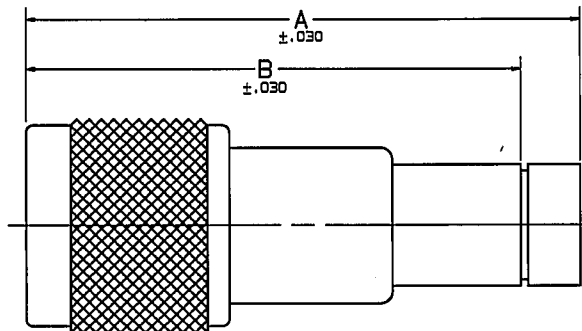
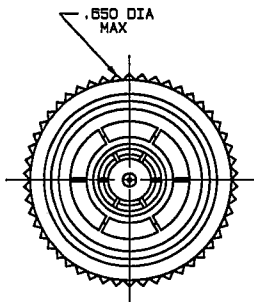
DASH NO	CABLES ACCOMMODATED	ASSEMBLY PER	DIM "A"	DIM "B"
-201	M17/175-00002			
-202	TWC-78-1			
-203	TWC-124-1A			
-204	10602 RAYCHEM			
-205	TWAC-78-1F2			
-206	782600130 RAYCHEM			
-207	83310 BELDEN			
-208	202-3927 MICRODOT			
-209	202-3942 MICRODOT			
-210	B45L BELDEN			
-211	202-393A MICRODOT			
-212	2524E011A RAYCHEM			
-213	TWC-78-2	TAI-201	1.560	1.390
-214	TWC-124-2			
-215	BL982, TIMES			
-216	BL1242, TIMES			
-217	GC875TN24H GRUMMAN			
-218	EDP221888, RAYCHEM			
-219	2526D111A RAYCHEM			
-220	GC875RR1, GRUMMAN			
-221	10614, RAYCHEM			
-222	10613, RAYCHEM			
-223	HMS2-1149, HUGHES			
-224	TWCP-124-3			
-225	PS86SPL, PRIME STOCK			
-226	TWCP-124-5	TAI-208	1.680	1.510

MILITARY PART NO (PIN)	MILITARY CABLE PART NO	TROMPETER PART NO (REF ONLY)
M49142/08-0018	M17/45-RG108	MPL375MC-213
M49142/08-0017	M17/175-00002	MPL375MC-201

DWG SIZE B
 DATA CONTAINED IN THIS DOCUMENT IS PROPRIETARY TO TROMPETER ELECTRONICS, INC. AND SHALL NOT BE DISCLOSED, COPIED OR USED FOR REPRODUCTION OR MANUFACTURE WITHOUT EXPRESS WRITTEN PERMISSION.

REVISIONS			3-0294	SH 1	
REV	ED	DESCRIPTION	OWN	APPROVED	DATE
C	11481	ADDED TABLE 2; AND NOTE Δ ; SEE ECO	DKC	<i>Ami fdl</i>	1/24/96

INCH	MM
.005	0.13
.030	0.76
.286	7.52
.650	16.51
1.390	35.31
1.510	38.35
1.560	39.31
1.680	42.67



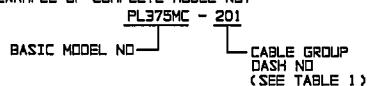
-201 SHOWN

Δ WHEN CONNECTOR IS SUPPLIED TO MILITARY PART NO (SEE TABLE 2):

- a) ALL PARTS NORMALLY PLATED TFS-1A OR TFS-1U (NICKEL) ARE TO BE PLATED TFS-1M (SILVER)
- b) MARK PART WITH MILITARY PIN (SEE TABLE 2) AND "14949"
- c) QUALITY CONFORMANCE INSPECTION SHALL BE PER MIL-C-49142 SECTION 4.5

6. IF SAFETY WIRE HOLES ARE REQUIRED ADD SUFFIX "S" TO BASIC MODEL NO (PL375MCS)

5. EXAMPLE OF COMPLETE MODEL NO:



3. THREADED CONCENTRIC TWINAX TRT, MILITARY FULL CRIMP CABLE PLUG

2. FINISH: TFS-1A (NICKEL) Δ

1. ALL DIMENSIONS ARE IN INCHES



QTY	DESCRIPTION	PART NUMBER	ITEM
TOL UNLESS SPECIFIED XXX ± .005 XXXX ± .005 ANGLES	TROMPETER ELECTRONICS, INC.	PL375MC/PL375MCS	
DWN	DKC 1-16-96	MATERIAL	CODE IDENT
CHK	<i>Ami 1-23-96</i>	14949	DRAWING NO.
ENGR			3-0294
APPR	<i>Ami 1/24/96</i>	SCALE 4/1	DATE 2-1-95
NEXT ASSY			SHEET 1 OF 2

X-ON Electronics

Largest Supplier of Electrical and Electronic Components

Click to view similar products for [RF Connectors / Coaxial Connectors](#) category:

Click to view products by [Bel Fuse](#) manufacturer:

Other Similar products are found below :

[8915-1511-000](#) [89674-0827](#) [6001-7071-019](#) [6002-7051-003](#) [6002-7551-202](#) [6059674-1](#) [619550-1](#) [630059-000](#) [M39030/3-01N](#) [6500-7071-046](#) [6769](#) [CX050L2AQ](#) [7002-1541-010](#) [7002-1542-011](#) [7004-1512-000](#) [7009-1511-004](#) [7010-1511-000](#) [7029-1511-060](#) [7101-1541-010](#) [7101-1571-002](#) [7145-1521-002](#) [7203-1571-003](#) [7209-1511-011](#) [7210-1511-015](#) [7210-1511-019](#) [73137-5015](#) [73216-2241](#) [73404-2300](#) [7405-1521-005](#) [7405-1521-802](#) [8527](#) [8547](#) [FS11V](#) [877931](#) [8808-1511-001](#) [9049-9513-000](#) [9074-9513-000](#) [9101-9573-002](#) [910A205F](#) [9130-9573-002](#) [PL11SC-026](#) [PL375-33](#) [PL40-5](#) [PL74C-221](#) [PL75MC-217](#) [PL803-7](#) [1200690078](#) [1-201144-1](#) [R107003010W](#) [R110A172100](#)