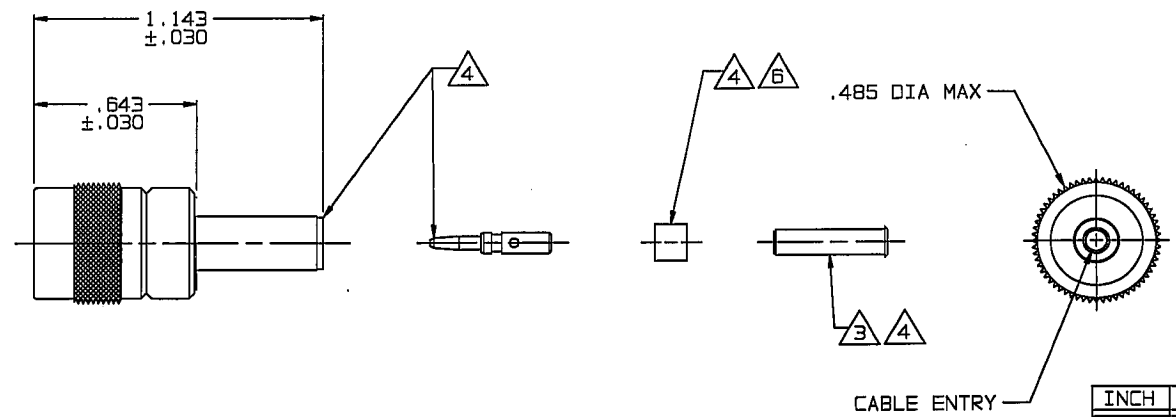


# RED INDICATES ORIGINAL

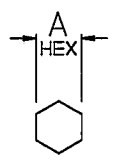
DATA CONTAINED IN THIS DOCUMENT IS PROPRIETARY TO TROMPETER ELECTRONICS INC. AND SHALL NOT BE DISCLOSED, COPIED OR USED FOR PROCUREMENT OR MANUFACTURE WITHOUT EXPRESS WRITTEN PERMISSION.

| REVISIONS |       |  | 1-0179 |                    | SH 1     |
|-----------|-------|--|--------|--------------------|----------|
| REV       | ED    | DESCRIPTION  | DWN    | APPROVED           | DATE     |
| B         | 12556 | DELETED: TAI-B118; ADDED: TAI-C118 FOR -013B, -015A, -022; AND RG-71 CABLE WAS CABLE GROUP -015; SEE ECO | DKC    | <i>[Signature]</i> | 10-19-98 |

| DASH NO | CABLES ACCOMMODATED              | A HEX | ASSEMBLE PER |          |
|---------|----------------------------------|-------|--------------|----------|
| -001    | RG-178, -198                     | .178  | TAI-A118     |          |
| -002    | HEWLETT-PACKARD 8120-1107        | .197  |              |          |
| -003    | RG-174, -188, -316               | .178  |              |          |
| -004    | RG-179, -187                     |       |              |          |
| -005    | MIL 17/094                       |       |              |          |
| -006    | GRUMMAN-GCB75GP1 DBL-SHLD RG-188 | .197  |              |          |
| -007    | 275-3991 MICRODOT                |       |              |          |
| -008    | RG-195, -180 421-111 ESSEX       | .178  |              |          |
| -009    | 8218 BELDEN 21-597 ESSEX         |       |              |          |
| -010    | RG-122                           |       |              |          |
| -011    | RG-58, -141, -303 21-537 ESSEX   | .213  | TAI-C118     |          |
| -012    | RG-55, -142, -223 RG-400         |       |              |          |
| -013    | RG-59                            |       | TAI-A118     |          |
| -013A   | TCC-75-2                         | .255  |              |          |
| -013B   | RG-62                            |       | TAI-C118     |          |
| -014    | 8212 BELDEN                      |       |              |          |
| -015    | 730A LUCENT                      |       | TAI-A118     |          |
| -015A   | RG71                             | .290  |              |          |
| -016    | 724, LUCENT 8281 BELDEN          | .324  | TAI-A118     |          |
| -017    | RG-6                             | .344  |              |          |
| -018    | 9268 BELDEN                      | .255  |              |          |
| -019    | 8279 BELDEN                      |       |              |          |
| -020    | 9248 BELDEN                      | .290  |              |          |
| -021    | 88240 BELDEN                     | .213  |              |          |
| -022    | 88241, 89269 BELDEN              | .255  |              | TAI-C118 |
| -023    | 89108 BELDEN                     |       |              | TAI-A118 |
| -024    | 89120 BELDEN                     | .290  |              |          |
| -025    | 734A, LUCENT                     | .255  |              |          |
| -026    | 735A, LUCENT                     |       |              |          |
| -027    | KS19224L2, LUCENT                | .178  |              |          |



-001 SHOWN



RECOMMENDED  
HEX CRIMP

| INCH  | MM    |
|-------|-------|
| .005  | 0.13  |
| .030  | 0.76  |
| .178  | 4.52  |
| .197  | 5.00  |
| .213  | 5.41  |
| .255  | 6.48  |
| .290  | 7.37  |
| .324  | 8.23  |
| .344  | 8.74  |
| .485  | 12.32 |
| .643  | 16.33 |
| 1.143 | 29.03 |

5. RF COAXIAL TPS FULL CRIMP CABLE PLUG

**4** PIN CONTACT, SLEEVE ASSY, CRIMP SLEEVE & CONTACT SUPPORT BUSHING ARE SUPPLIED LOOSE

**3** SLEEVE ASSY REQUIRED ON -001 THRU -007 & -027 ONLY

2. FINISH: TFS-1A (NICKEL)

1. ALL DIM ARE IN INCHES

**6** CONTACT SUPPORT BUSHING REQUIRED ON -013B, -015A & -022 ONLY

NEXT ASSY

| QTY   | DESCRIPTION                        |          | PART NUMBER  | ITEM         |
|---|------------------------------------|----------|--------------|--------------|
| TOL UNLESS SPECIFIED<br>.XX ±<br>.XXX ± .005<br>.XXXX ±<br>ANGLES ± | <b>TROMPETER ELECTRONICS, INC.</b> |          | PL50C        |              |
| DWN   | DKC                                | 10-13-98 | MATERIAL     | CODE IDENT   |
| CHK   | WM                                 | 10-15-98 | 14949        | DRAWING NO.  |
| ENGR  |                                    |          | 1-0179       | REV          |
| APPR  |                                    |          | SCALE 2/1    | DATE 12-1-89 |
|   |                                    |          | SHEET 1 OF 2 |              |

## X-ON Electronics

Largest Supplier of Electrical and Electronic Components

*Click to view similar products for [RF Connectors / Coaxial Connectors](#) category:*

*Click to view products by [Bel Fuse](#) manufacturer:*

Other Similar products are found below :

[8915-1511-000](#) [89674-0827](#) [6001-7071-019](#) [6002-7051-003](#) [6002-7551-202](#) [6059674-1](#) [619550-1](#) [630059-000](#) [M39030/3-01N](#) [6500-7071-046](#) [6769](#) [CX050L2AQ](#) [7002-1541-010](#) [7002-1542-011](#) [7004-1512-000](#) [7009-1511-004](#) [7010-1511-000](#) [7029-1511-060](#) [7101-1541-010](#) [7101-1571-002](#) [7145-1521-002](#) [7203-1571-003](#) [7209-1511-011](#) [7210-1511-015](#) [7210-1511-019](#) [73137-5015](#) [73216-2241](#) [73404-2300](#) [7405-1521-005](#) [7405-1521-802](#) [8527](#) [8547](#) [FS11V](#) [877931](#) [9049-9513-000](#) [9074-9513-000](#) [9101-9573-002](#) [910A205F](#) [9130-9573-002](#) [PL11SC-026](#) [PL375-33](#) [PL40-5](#) [PL74C-221](#) [PL75MC-217](#) [PL803-7](#) [980-8666-005](#) [1200690078](#) [1-201144-1](#) [R107003010W](#) [R110A172100](#)