

| TABLE 1 | |
|---------|--------------------------------|
| DASH NO | DESCRIPTION |
| -1 | CAP (NO CHAIN) |
| -2 | CAP WITH 2.5 INCH BRASS CHAIN |
| -3 | CAP WITH 2.5 INCH NYLON CHAIN |
| -4 | CAP WITH 3.0 INCH BRASS CHAIN |
| -5 | CAP WITH 3.0 INCH NYLON CHAIN |
| -6 | CAP WITH 6.0 INCH BRASS CHAIN |
| -7 | CAP WITH 6.0 INCH NYLON CHAIN |
| -8 | CAP WITH 4.0 INCH BRASS CHAIN |
| -9 | CAP WITH 4.0 INCH NYLON CHAIN |
| -10 | CAP WITH 10.0 INCH BRASS CHAIN |
| -11 | CAP WITH 10.0 INCH NYLON CHAIN |
| -12 | CAP WITH 2.5 INCH SST ROPE |
| -13 | CAP WITH 3.0 INCH SST ROPE |
| -14 | CAP WITH 6.0 INCH SST ROPE |
| -15 | CAP WITH 4.0 INCH SST ROPE |
| -16 | CAP WITH 7.0 INCH SST ROPE |
| -17 | CAP WITH 4.5 INCH SST ROPE |
| -18 | CAP WITH 12 INCH SST ROPE |

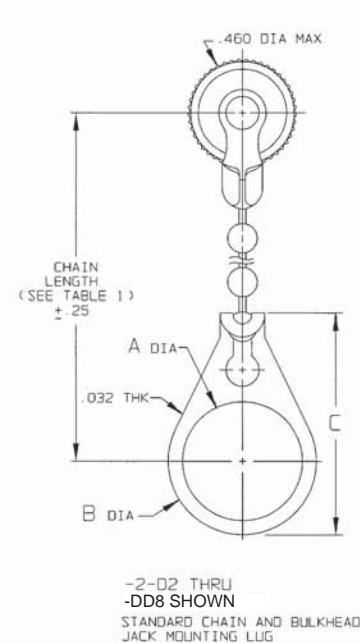
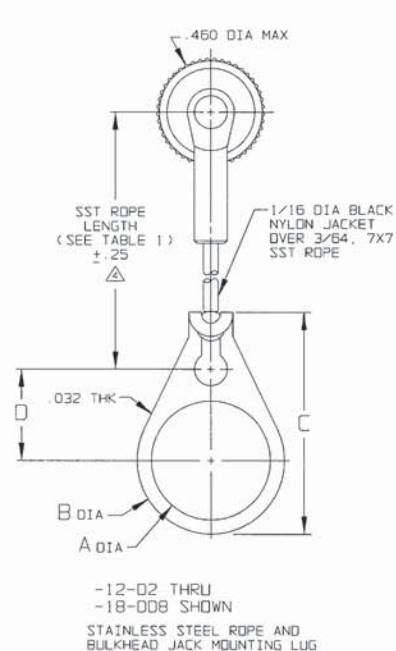
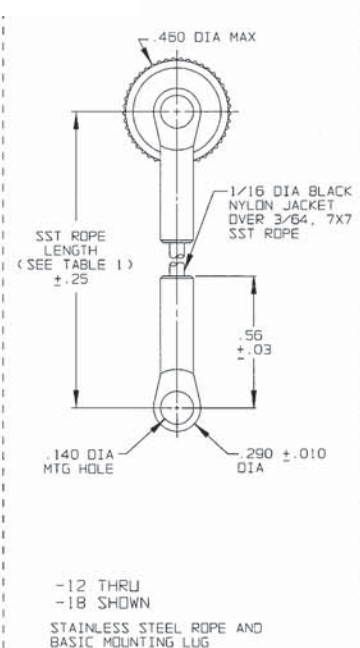
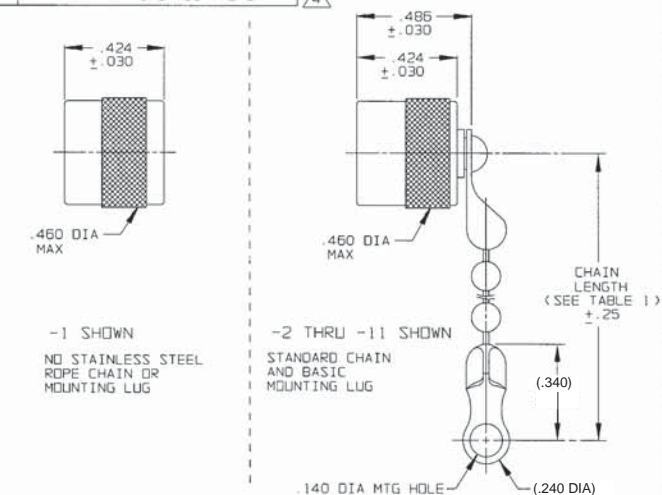
| TABLE 2 | |
|----------|----------|
| MODEL NO | TYPE |
| RF155 | 3-LUG |
| RF1155 | |
| RF155FL | 4-LUG |
| RF1155FL | |
| RF1355 | THREADED |
| RF13155 | |

| TABLE 3 | | | | | |
|---------|---------|---------|---------|---------|--|
| DASH NO | "A" DIA | "B" DIA | "C" DIM | "D" DIM | |
| -02 | .630 | .750 | 1.066 | .450 | |
| -03 | .505 | .625 | .941 | .388 | |
| -04 | .439 | .562 | .878 | .355 | |
| -05 | .380 | .500 | .816 | .325 | |
| -06 | .317 | .437 | .753 | .295 | |
| -07 | .281 | .406 | .722 | .278 | |
| -08 | .610 | .750 | 1.066 | .450 | |
| -09 | .567 | .687 | 1.003 | .419 | |
| -010 | .192 | .312 | .628 | .231 | |
| -DD8 | .330 | .450 | .766 | .300 | |

DATA CONTAINED IN THIS DOCUMENT IS PROPRIETARY TO TROMPETER ELECTRONICS, INC. AND SHALL NOT BE DISCLOSED, COPIED OR USED FOR REPRODUCTION IN ANY MANNER WITHOUT EXPRESS WRITTEN PERMISSION OF TROMPETER ELECTRONICS, INC.

| REVISIONS | | 1-0151 | SH 1 |
|-----------|-----------------------|---------|----------|
| REV | DESCRIPTION | DATE | APPROVED |
| M | REVISED PER ECO 15018 | 4-10-03 | BM |

RED INDICATES ORIGINAL



2. EXAMPLE OF COMPLETE MODEL NO:
RF13155S-2-03
- BASIC MODEL NO
- BULKHEAD JACK MOUNTING LUG (OPTIONAL) (SEE TABLE 3)
- CHAIN/ROPE MATL AND LENGTH (SEE TABLE 1)

1. MALE 3 & 4-LUG & THREADED STYLE SUBMINIATURE RFI DUST CAP WITH OR WITHOUT CHAIN OR JACKETED STAINLESS STEEL ROPE AND MOUNTING OPTION

- NOTE THAT CHAIN LENGTH FOR SST ROPE WITH MOUNTING LUG OPTION IS NOT MEASURED TO CENTER OF BULKHEAD MOUNTING LUG
- IF SAFETY WIRE REQUIRED ADD SUFFIX "S" TO MODEL NO. (i.e. RF13155S)

| | | | |
|--|--|---|--|
| TROMPETER ELECTRONICS, INC. 10000 W. 10TH AVE. SUITE 100 DENVER, CO 80231 (303) 751-1000 FAX (303) 751-1001 WWW.TROMPETER.COM | | UNLESS SPECIFIED XX .XXX ±.005 ANGLE MATERIAL: FINISH: SCALE: 2/1 | |
| DRAWN: AAH DATE: 4-9-03 CHECKED: JH DATE: 4/10/03 APPROVED: JH DATE: 4/10/03 | | TITLE: RFI55/RFI155/RF155FL/RF1155FL/RF1355/RF13155 SIZE: B 14949 CAGE CODE: 1-0151 DATE: 2-22-77 SHEET: 1C | |

X-ON Electronics

Largest Supplier of Electrical and Electronic Components

Click to view similar products for [RF Connector Accessories](#) *category:*

Click to view products by [Bel Fuse](#) *manufacturer:*

Other Similar products are found below :

[89674-0712](#) [F702RX24](#) [FERRULE-174](#) [R141802000](#) [R141805000](#) [R141842000](#) [R161862000](#) [R161862000W](#) [R280752000](#) [R280907000](#)
[R694261906](#) [RFI21-13](#) [RFI75-13-D2](#) [RFI75-4-D2](#) [AX102906](#) [AX102907](#) [18097-0013](#) [HP-375](#) [HP-500](#) [2098-0294-00](#) [2098-3251-94](#) [KA-](#)
[81-05](#) [89674-0805](#) [F1](#) [FERRULE-223](#) [202102-11](#) [213337-1](#) [220222-2](#) [24092671A](#) [24092678A](#) [R280468000](#) [R280510000](#) [R282862060](#)
[RFI155-1](#) [RFI25-12-D3](#) [RFI25-5](#) [RFI25-5-D3](#) [RFI75-12-D2](#) [RFI75-2-D2](#) [RFI75-4-D3](#) [RFI77-6](#) [360HS001M2508M6](#) [4-1532137-4](#) [5-21085-](#)
[0](#) [105274-1000](#) [111062-0490](#) [112122-SOD-LUG](#) [112-NUT-KNURL](#) [IPP-2014](#) [R280490020](#)