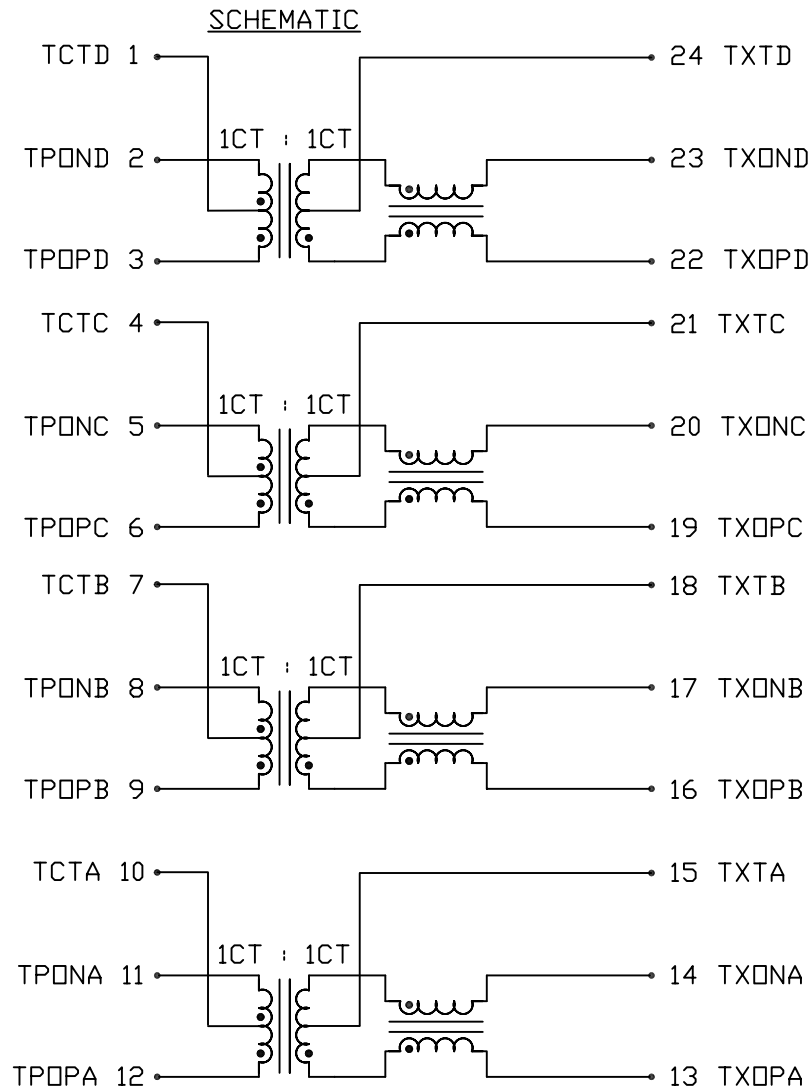


THE INFORMATION CONTAINED HEREIN IS CONSIDERED 'PROPRIETARY' TO BEL FUSE INC. AND SHALL NOT BE COPIED, REPRODUCED OR DISCLOSED WITHOUT THE WRITTEN APPROVAL OF BEL FUSE INC.

ELECTRICAL CHARACTERISTICS @25°C



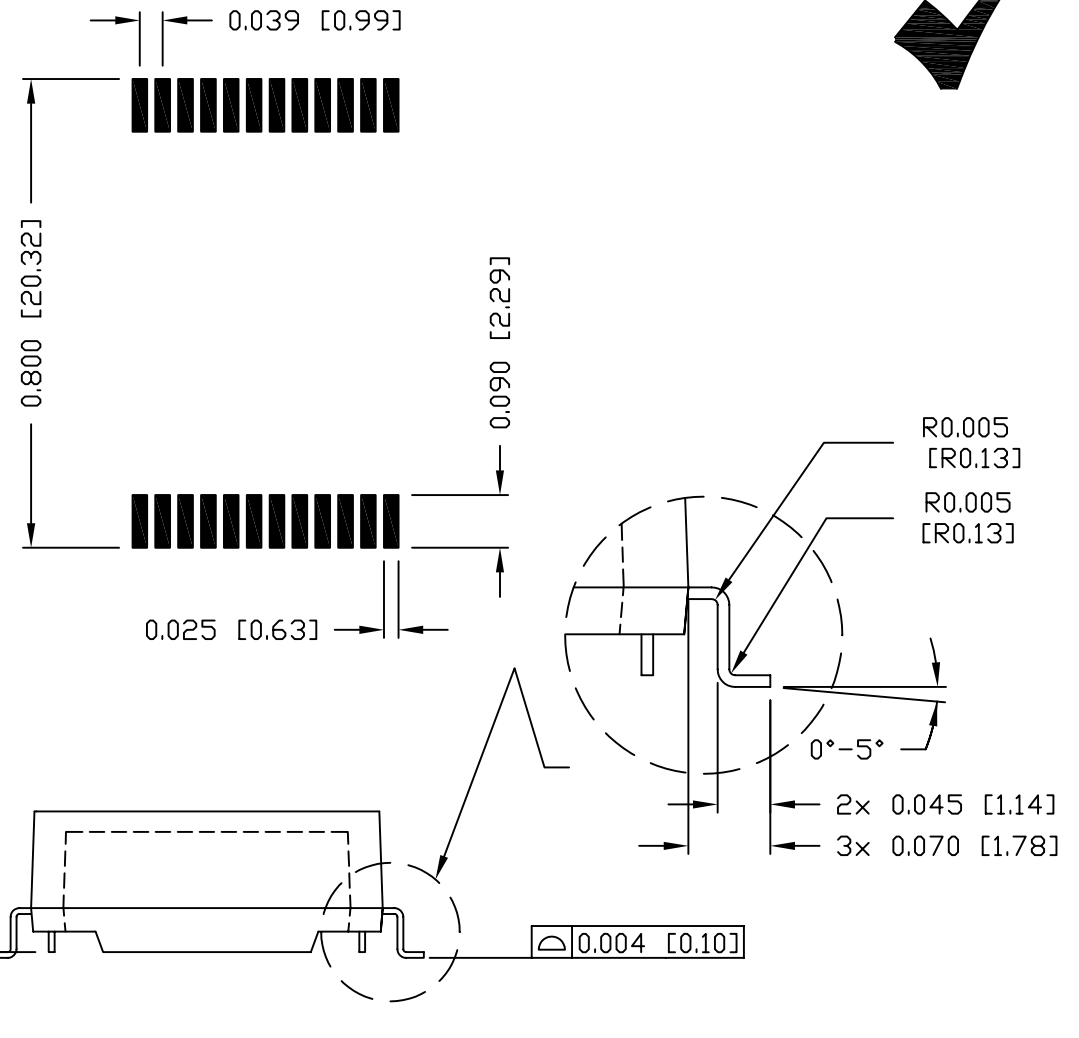
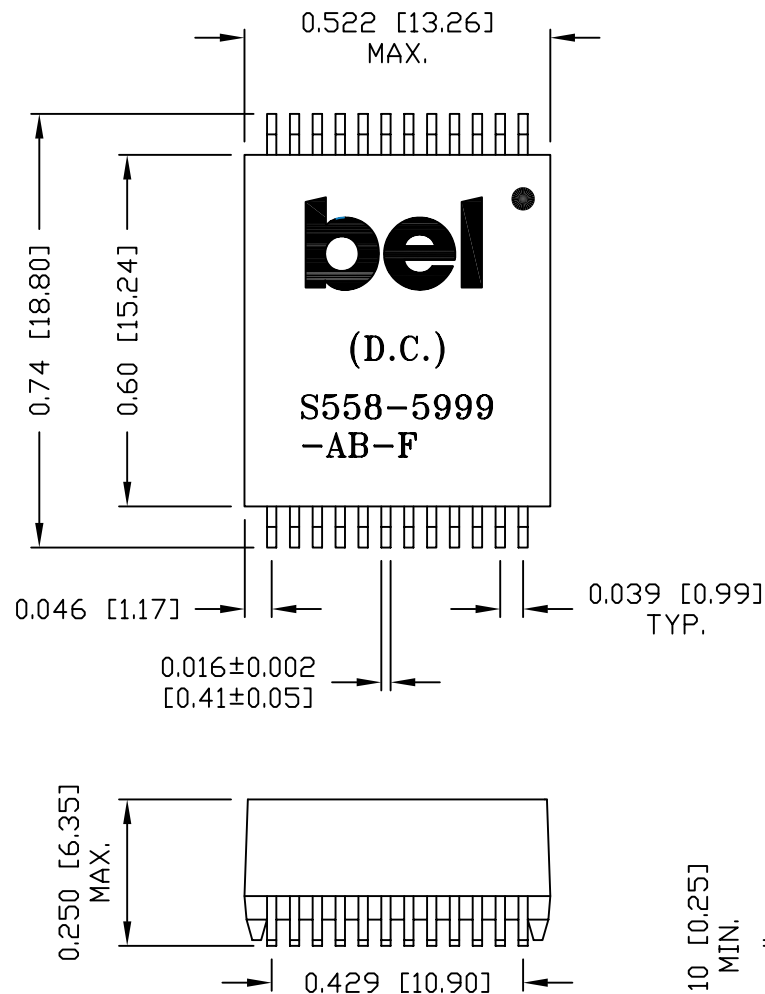
|   |   |
|---|---|
| <b>URNS RATIO</b>                                       |   |
| (3-1-2) : (22-24-23)                                    | 1CT : 1CT   |
| (6-4-5) : (19-21-20)                                    | 1CT : 1CT   |
| (9-7-8) : (16-18-17)                                    | 1CT : 1CT   |
| (12-10-11) : (13-15-14)                                 | 1CT : 1CT   |
| <b>QCL</b>  | 350μH MIN AT 100kHz, 100mV<br>WITH 8mA DC BIAS @25°C                                    |
| <b>INSERTION LOSS</b>                                   | 1.1dB MAX @0.1 TO 1MHz<br>0.5dB MAX @1TO 65MHz<br>1.0dB MAX @80MHz<br>1.2dB MAX @125MHz |
| <b>RETURN LOSS</b><br>UNDER 100 OHM<br>±15% ENVIRONMENT | 18dB MIN @0.5 TO 40 MHz<br>12-20LOG<f/80MHz> dB MIN<br>@40 TO 100 MHz                   |
| <b>COMMON TO COMMON REJECTION</b>                       | 30dB MIN @0.1 TO 100 MHz  |
| <b>CROSSTALK</b>  | @1 TO 100 MHz<br>33-20LOG<F/100 MHz> dB MIN   |
| <b>HIPOT</b>  | PER HAND-WORK-03  |
| <b>OPERATION TEMPERATURE:</b>                           | -40°C TO 85°C   |

|                                    |  |                           |  |   |                                      |                                |           |                 |                 |
|------------------------------------|--|---------------------------|--|---|--------------------------------------|--------------------------------|-----------|-----------------|-----------------|
| <b>ORIGINATED BY</b><br>Alice Pang |  | <b>DATE</b><br>2015-01-26 | <b>TITLE</b><br>GIGABIT ETHERNET MAGNETICS<br>S558-5999-AB-F | <b>PART NO. / DRAWING NO.</b><br>X5585999AB-F | <b>STANDARD DIM.</b><br>TOL. IN INCH | <b>[ ] METRIC DIM. AS REF.</b> |           | <b>REV. :</b> C | <b>PAGE :</b> 2 |
| <b>DRAWN BY</b><br>ZC Guo          |  | <b>DATE</b><br>2015-01-26 |  | <b>FILE NAME</b><br>X5585999ABFC.DWG          | .X                                   | UNIT : INCH [mm]               |           |                 |                 |
|                                    |  |                           |  |   | .XX                                  | SCALE : N/A                    |           |                 |                 |
|                                    |  |                           |  | .XXX  |                                      |                                | SIZE : A4 |                 |                 |



THE INFORMATION CONTAINED HEREIN IS CONSIDERED "PROPRIETARY" TO BEL FUSE INC. AND SHALL NOT BE COPIED, REPRODUCED OR DISCLOSED WITHOUT THE WRITTEN APPROVAL OF BEL FUSE INC.

SUGGESTED PCB PAD LAYOUT



NOTES:

- STANDARD MARKING REFER TO DOC. HAND-WORK-04.
- PACKAGE CODE: "QTS001".

|                |            |                                      |                        |               |                         |
|----------------|------------|--------------------------------------|------------------------|---------------|-------------------------|
| ORIGINATED BY  | DATE       | TITLE                                | PART NO. / DRAWING NO. | STANDARD DIM. | [ ] METRIC DIM. AS REF. |
| Lawrence Tsang | 2015-01-26 | MECHANICAL DRAWING<br>S558-5999-AB-F | X5585999AB-F           | TOL. IN INCH  | UNIT : INCH [mm]        |
| DRAWN BY       | DATE       |                                      | FILE NAME              | .X            | SCALE : N/A             |
| ZC Guo         | 2015-01-26 |                                      | X5585999ABFC.DWG       | .XX ±0.01     | SIZE : A4               |
|                |            |                                      |                        | .XXX ±0.005   |                         |

REV. : C      PAGE : 3

## X-ON Electronics

Largest Supplier of Electrical and Electronic Components

*Click to view similar products for [Audio Transformers / Signal Transformers](#) category:*

*Click to view products by [Bel Fuse](#) manufacturer:*

Other Similar products are found below :

[CX2041NLT](#) [MGPWT-00449-P](#) [PE-64961](#) [H1302FNLT](#) [H5008FNL](#) [H5012FNL](#) [H5020FNLT](#) [H5077NLT](#) [H5079NLT](#) [H5084FNLT](#)  
[B78476A9558A003](#) [1812WBT2-4](#) [1879479-1](#) [HX2260FNL](#) [HX5014FNL](#) [EX2024FNL](#) [FL1066](#) [T1137NLT](#) [T3012NL](#) [PE-65812FNL](#) [PE-65848FNLT](#) [H1174FNL](#) [H1302FNL](#) [H5015FNL](#) [H5019EFNL](#) [H5062FNLT](#) [CX2047LNL](#) [MGPWT-00059-P](#) [MGPWT-00266-P](#) [MGPWT-00278-P](#) [MGPWT-00431-P](#) [TTC-100](#) [TTC-143-H](#) [TTC-5032-1](#) [BX1194WNLT](#) [HX1234NLT](#) [HX5008FNLT](#) [HX5019FNL](#) [HX5084NL](#) [3-1879385-5](#) [TX1263NLT](#) [4-1879391-0](#) [T1142NL](#) [HX6101FNL](#) [HX5084FNL](#) [HX1148NL](#) [HX5020FNLT](#) [HX5014FNLT](#) [T1124NL](#)  
[1879732-1](#)