

THE INFORMATION CONTAINED HEREIN IS CONSIDERED "PROPRIETARY" TO BEL FUSE INC. AND SHALL NOT BE COPIED, REPRODUCED OR DISCLOSED WITHOUT THE WRITTEN APPROVAL OF BEL FUSE INC.



**PATENTED:  
THIS PRODUCT IS  
COVERED BY U.S.  
PATENT 5,736,910**



**DOCUMENT / PART NO.: SI-30107-F**

**TITLE : 10/100BT,STACK JACK, SHIELDED**

ISSUE	DESCRIPTION OF CHANGE	REVIEWED BY	APPROVED BY	ECN#
A0	Update the mechanical drawing	Bian Liu	Steve Weller	06374

<b>PAGE</b>	1	2	3	4	--	--	--	--	--	--	--	--	--	--	--	--	--	--
<b>REV.</b>	A0	A0	A0	A0	--	--	--	--	--	--	--	--	--	--	--	--	--	--
<b>PAGE</b>	--	--	--	--	--	--	--	--	--	--	--	--	--	--	<b>C2005-F REV A0</b>			
<b>REV.</b>	--	--	--	--	--	--	--	--	--	--	--	--	--	--	<b>24-0199-F REV A0</b>			

THE INFORMATION CONTAINED HEREIN IS CONSIDERED "PROPRIETARY" TO BEL FUSE INC. AND SHALL NOT BE COPIED, REPRODUCED OR DISCLOSED WITHOUT THE WRITTEN APPROVAL OF BEL FUSE INC.

ELECTRICAL CHARACTERISTICS @ 25° C

ELECTRICAL SPECIFICATIONS:

	: 0° C TO +70° C
1.0 TURNS RATIO:(P1-P2-P3) : (J1-J2)	: 1CT : 1 ± 3%
(P4-P5-P6) : (J3-J6)	: 1CT : 1 ± 3%
2.0 INDUCTANCE: (P6-P4)	: 350uH MIN. @ 0.1V,100KHz, 8mA DC Bias
(P3-P1)	: 350uH MIN. @ 0.1V, 100KHz, 8mA DC Bias
3.0 LEAKAGE INDUCTANCE: P6-P4 (WITH J6 AND J3 SHORT)	: 0.3uH MAX. @ 1MHz
P3-P1 (WITH J2 AND J1 SHORT)	: 0.3uH MAX. @ 1MHz
4.0 INTERWINDING CAPACITANCE(P6,P5,P4) TO (J6,J3)	: 30pf TYP @ 1MHz
(P3,P2,P1) TO (J2,J1)	: 30pf TYP @ 1MHz
5.0 DC RESISTANCE:(J6-J3)=(J1-J2)	: 1.2 ohms Max.
(P6-P4)	: .55 ohms Max.
(P3-P1)	: .55 ohms Max.
<u>RECEIVE</u>	
6.0 RETURN LOSS1MHz TO 30MHz	: 18dB MIN.
60MHz TO 80MHz	: 12dB MIN.
7.0 DIELECTRIC WITHSTAND(J1, J2) TO (P1, P2)	: 1500 VAC
(J3, J6) TO (P3,P6)	: 1500 VAC
8.0 INSERTION LOSSRS=RL=100 ohms	: 1.1 dB TYP
100KHz TO 100MHz	
9.0 RISE TIME:RS=100 OHMS AND RL = 100 OHMS	: 3.0 nS MAX
OUTPUT VOLTAGE = 1 V peak	: 3.0 nS MAX
PULSE WIDTH= 112nS	
10.0 CROSS TALK: 1MHz TO 100MHz	: 40 dB TYP
11.0 COMMON TO COMMON MODE ATTENUATIONMHz TO 100MHz	: 35dB TYP

PINS

TD+ P1  
TCT P2  
TD- P3  
RD+ P4  
TCT P5  
RD- P6

P8

NOTES

1.0 PINS W

ORIGINATED BY

DATE

Zeng Xiao Chun

2011-08-18

DRAWN BY

DATE

Zhang Ru Sheng

2011-08-18

TITLE

**MagJack®**

10/100BT

STACK JACK, SHIELDED  
PATENTED

PART NO. / DRAWING NO.

SI-30107-F

FILE NAME

SI-30107-F.DWG

STANDARD DIM.

TOL. IN INCH

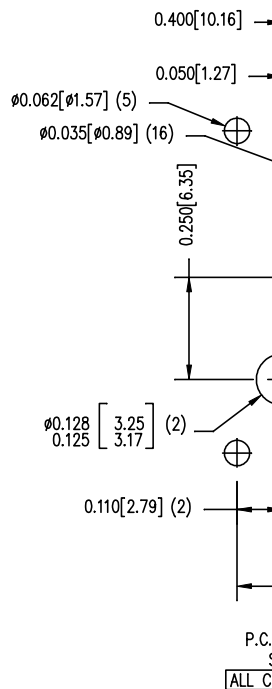
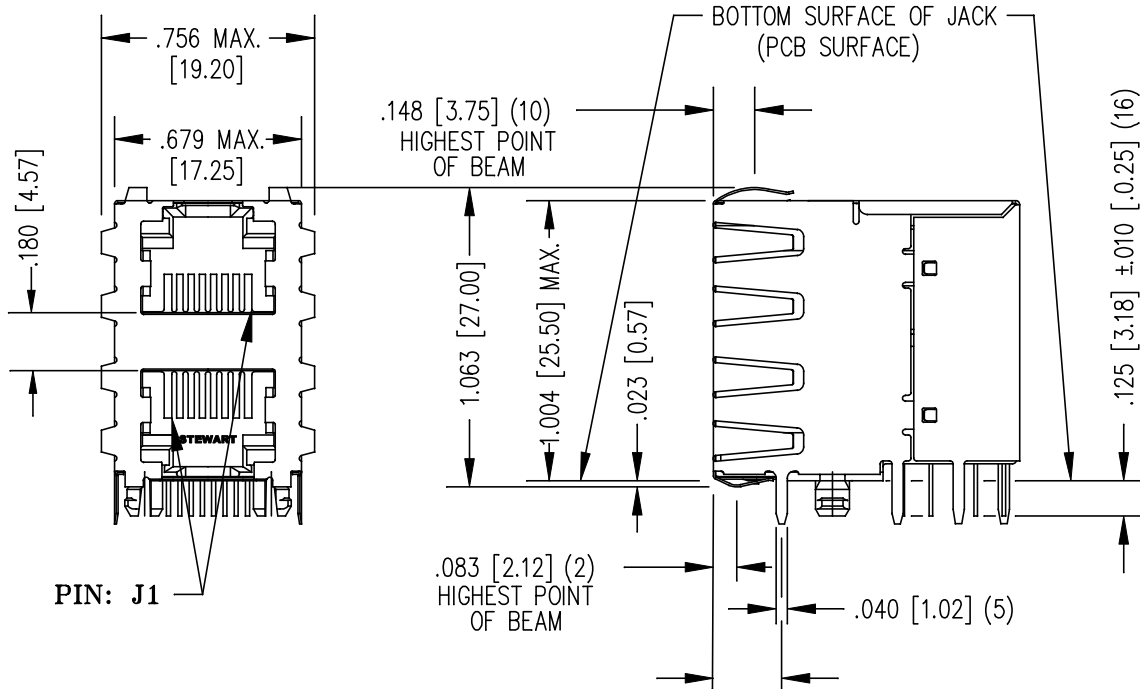
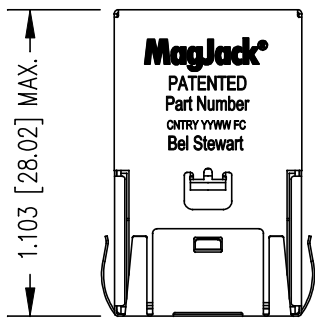
.X

.XX

.XXX

±0.00

THE INFORMATION CONTAINED HEREIN IS CONSIDERED "PROPRIETARY" TO BEL FUSE INC. AND SHALL NOT BE COPIED, REPRODUCED OR DISCLOSED WITHOUT THE WRITTEN APPROVAL OF BEL FUSE INC.



NOTES:

1. CONNECTOR MOUNTING HOUSING: THE CONTACT/SHIELD CONTACT PLATING
2. PIN NOT ELECTRICALLY CONNECTED SEE ELECTRICAL DRAWING
3. TOLERANCES ON DIMENSIONS
4. ALL TOLERANCES UNLESS OTHERWISE SPECIFIED
5. WAVE SOLDER

ORIGINATED BY

DATE

Zeng Xiao Chun

2011-08-18

DRAWN BY

DATE

Zhang Ru Sheng

2011-08-18

TITLE

**MagJack®**

10/100BT

STACK JACK, SHIELDED  
 PATENTED

PART NO. / DRAWING NO.

SI-30107-F

FILE NAME

SI-30107-F.DWG

STANDARD DIM.

TOL. IN INCH

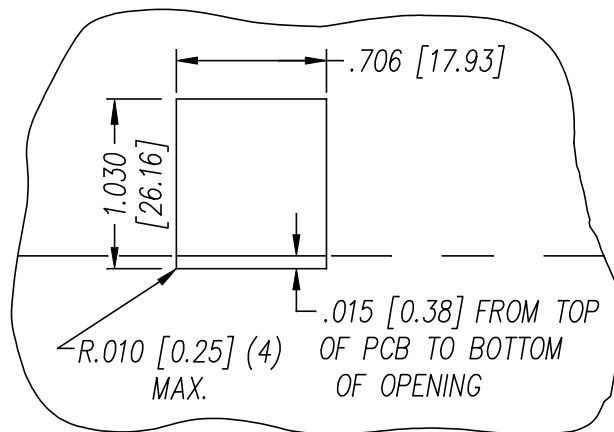
.X

.XX

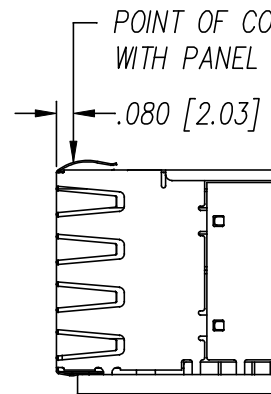
.XXX

±0.00

THE INFORMATION CONTAINED HEREIN IS CONSIDERED "PROPRIETARY" TO BEL FUSE INC. AND SHALL NOT BE COPIED, REPRODUCED OR DISCLOSED WITHOUT THE WRITTEN APPROVAL OF BEL FUSE INC.



SUGGESTED PANEL OPENING  
(N.T.S.)



1. THE SUGGESTED PANEL OPENING IS TO GIVE THE USER THE ABILITY TO REMOVE THE REASONABLE JACK / PANEL CLEARANCE YET MAINTAIN RELIABLE GROUNDING CAPABILITY.
2. ALL TOLERANCES NOT OTHERWISE SPECIFIED TO BE  $\pm 0.005$  [0.13]

ORIGINATED BY <b>Zeng Xiao Chun</b>	DATE <b>2011-08-18</b>	TITLE <b>MagJack® 10/100BT STACK JACK, SHIELDED PATENTED</b>	PART NO. / DRAWING NO. <b>SI-30107-F</b>		STANDARD DIM. TOL. IN INCH
DRAWN BY <b>Zhang Ru Sheng</b>	DATE <b>2011-08-18</b>		FILE NAME <b>SI-30107-F.DWG</b>		.X .XX .XXX $\pm 0.00$

## X-ON Electronics

Largest Supplier of Electrical and Electronic Components

*Click to view similar products for [Modular Connectors / Ethernet Connectors](#) category:*

*Click to view products by [Bel Fuse](#) manufacturer:*

Other Similar products are found below :

[8949-H88/06BLKA/SN](#) [74441-0010/BKN](#) [MP1010RX-1000](#) [MP44RX-1000](#) [PHJ-4P4C-1-V-4](#) [PHP-6P6C-5](#) [GAX-3-66](#) [GAX-8-62](#) [GDCX-PA-66-50](#) [GDCX-PN-64](#) [GDCX-PN-66](#) [GDCX-PN-66-50](#) [GDLX-A-66](#) [GDLX-N-66](#) [GDLX-S-66](#) [GDLX-S-88K](#) [GDLX-SMT-S-88](#) [GDTX-S-88-50](#) [GDX-PA-1010](#) [GLX-N-1010M-BLK](#) [GLX-S-88M-BLK](#) [GMX-N-1010](#) [GMX-S-1010](#) [GMX-S-66](#) [GMX-SMT4-N-88](#) [GPX-2-64](#) [GSGX-N-2-88](#) [GSGX-N-4-88](#) [GSX-NS2-88-3.05](#) [GSX-NS2-88-3.05-50](#) [GSX-NS-88-3.05-50](#) [PT-108A-8C-UL](#) [PT-J951-8C](#) [PTS-J531-8CS-50UL](#) [1-1775629-2](#) [A-2014-0-4](#) [GWLX-S-88-GR](#) [GWLX-S9-88-YG](#) [DC-1021-8-WH-6](#) [1300530003](#) [1324640-4](#) [RJ11FTVC2G](#) [RJ11FTVC2N](#) [RJFTVX2SA1G](#) [132764-001](#) [1413235](#) [MP88X-1000](#) [MPS88RX-5000](#) [E5288-S000K3-L](#) [E5908-15A242-L](#)