

THE INFORMATION CONTAINED HEREIN IS CONSIDERED "PROPRIETARY" TO BEL FUSE INC. AND SHALL NOT BE COPIED, REPRODUCED OR DISCLOSED WITHOUT THE WRITTEN APPROVAL OF BEL FUSE INC.



PATENTED:  
THIS PRODUCT IS  
COVERED BY U.S.  
PATENT 5,736,910



DOCUMENT / PART NO.: SI-52008-F

TITLE : 10/100BT,PoE; TAB UP, SHIELDED

ISSUE	DESCRIPTION OF CHANGE	REVIEWED BY	APPROVED BY	ECN#
A0	USE NEW FORMAT AND PRODUCTION RELEASE	David Chan	Danny Kwan	06257
B0	Update drawing format,remove PIN#6 from footprint	Bain Liu	Steve Weller	06346
B1	Update the circuit drawing	Bain Liu	Steve Weller	06383

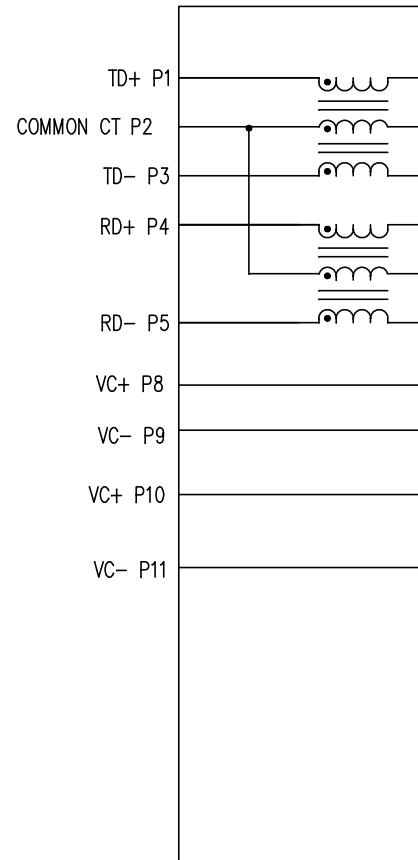
PAGE	1	2	3	4	--	--	--	--	--	--	--	--	--	--	--	--	--	--
REV.	B1	B1	B1	B1	--	--	--	--	--	--	--	--	--	--	--	--	--	--
PAGE	--	--	--	--	--	--	--	--	--	--	--	--	--	--	C5128-F REV A2			
REV.	--	--	--	--	--	--	--	--	--	--	--	--	--	--	24-0444-F REV B0			

**THE INFORMATION CONTAINED HEREIN IS CONSIDERED "PROPRIETARY" TO BEL FUSE INC. AND SHALL NOT BE COPIED, REPRODUCED OR DISCLOSED WITHOUT THE WRITTEN APPROVAL OF BEL FUSE INC.**

ELECTRICAL CHARACTERISTICS @ 25° C

1.0 TURNS RATIO:	(P1-P3):(J1-J2) (P4-P5):(J3-J6)	1CT : 1CT ±2% 1CT : 1CT ±2%
2.0 DC RESISTANCE:	(P1-P3):(P4-P5) (J1-J2):(J3-J6)	1.4 OHMS 1.2 OHMS
3.0 INDUCTANCE:	(P1-P3) (P4-P5)	350uH MIN. @ 0.1V, 100KHz, 8mA DC BIAS 350uH MIN. @ 0.1V, 100KHz, 8mA DC BIAS
4.0 LEAKAGE INDUCTANCE:	(P4-P5) WITH J6 AND J3 SHORT (P1-P3) WITH J2 AND J1 SHORT	0.3uH MAX. @ 1MHz 0.3uH MAX. @ 1MHz
5.0 INTERWINDING CAPACITANCE:	(P4,P5) TO (J3,J6) (P1,P2,P3) TO (J1,J2)	60pF TYP @ 1MHz 60pF TYP @ 1MHz
6.0 RETURN LOSS:	(P1-P3)=100 OHMS REF. AND (P4-P5)=100 OHM REF. 1MHz TO 30MHz 30MHz TO 60MHz 60MHz TO 80MHz	-18dB MIN. -(19-20LOG(f/30MHz)) 12dB MIN.
7.0 DIELECTRIC WITHSTAND:	(J3,J6) TO (P4,P5) (J1,J2) TO (P1,P3)	1500Vms 1500Vrms
8.0 INSERTION LOSS:	RS=RL=100 OHMS 1MHz-65MHz	-1dB MAX
9.0 RISE TIME:	RS=RL=100 OHMS OUTPUT VOLTAGE = 1V PEAK PULSE WIDTH = 112nS	3.0nS MAX 3.0nS MAX
10.0 CROSS TALK:	1MHz-65MHz	-35dB MIN.
11.0 CM TO CM ATTENUATION:	30MHz TO 100MHz 100MHz TO 130MHz	-30dB MIN. -20dB MIN.
12.0 BALANCED DC LINE CURRENT:		350mA MAX @ 57 VDC CONTINUOUS 500mA MAX @ 57 VDC FOR 200 MILLSECONDS

PINS



NOTES

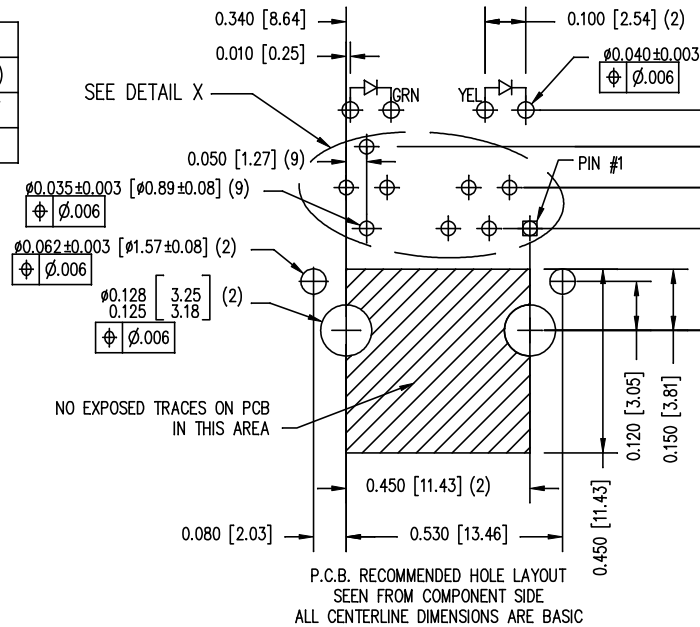
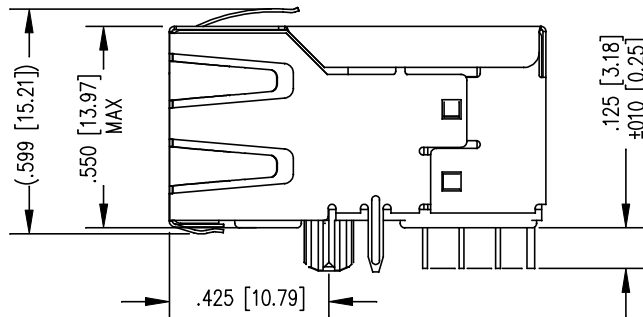
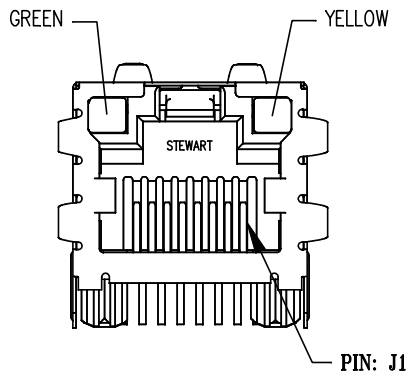
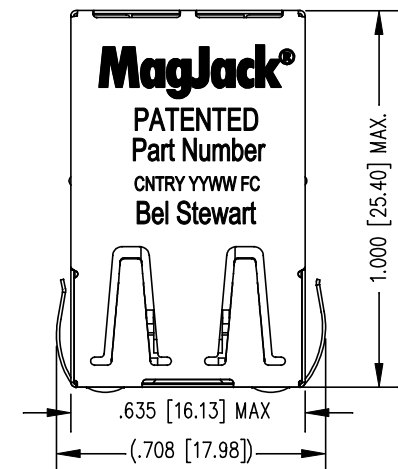
1.0 DESIGNED TO SUPPORT

<b>ORIGINATED BY</b> Zeng Xiaochun	<b>DATE</b> 2012-04-18	<b>TITLE</b> <b>MagJack®</b> 10/100BT,PoE TAB UP,SHIELDED PATENTED	<b>PART NO. / DRAWING NO.</b> SI-52008-F	<b>STANDARD DIM.</b> TOL. IN INCH	
<b>DRAWN BY</b> Duan Jun	<b>DATE</b> 2012-04-18		<b>FILE NAME</b> SI-52008-F.DWG	.X	
				.XX	
				.XXX	±0.00

THE INFORMATION CONTAINED HEREIN IS CONSIDERED "PROPRIETARY" TO BEL FUSE INC. AND SHALL NOT BE COPIED, REPRODUCED OR DISCLOSED WITHOUT THE WRITTEN APPROVAL OF BEL FUSE INC.

LED SPECIFICATION			
STANDARD LED	WAVELENGTH	FORWARD V (MAX)	* (TYP)
GREEN	565 nm	2.5 V	2.2 V
YELLOW	590 nm	2.5 V	2.1 V

\*WITH A FORWARD CURRENT OF 20 mA (TYP)



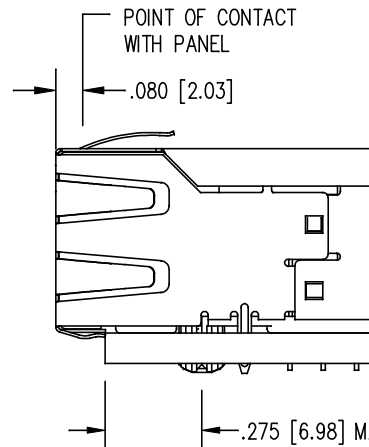
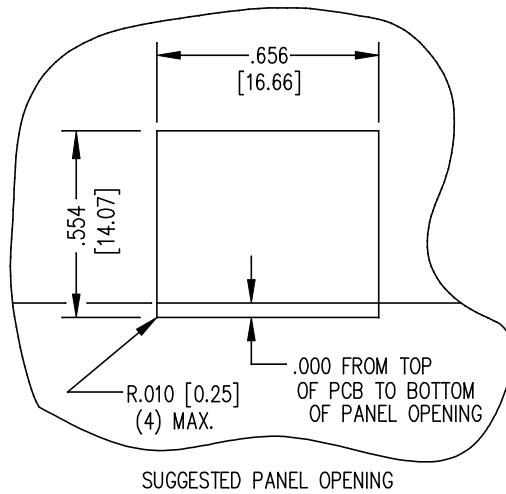
NOTES:

- CONNECTOR HOUSING: CONTACT/S SHIELD PL CONTACT P
- PIN NOT EL SEE ELECTR
- TOLERANCE
- ALL TOLER
- REFLOW AN 10 SECOND

ORIGINATED BY	DATE	TITLE
Zeng Xiaochun	2012-04-18	<b>MagJack®</b> 10/100BT,PoE TAB UP,SHIELDED PATENTED
DRAWN BY	DATE	
Duan Jun	2012-04-18	

PART NO. / DRAWING NO.	STANDARD DIM.
SI-52008-F	TOL. IN INCH
FILE NAME	.X
SI-52008-F.DWG	.XX
	.XXX
	±0.00

THE INFORMATION CONTAINED HEREIN IS CONSIDERED "PROPRIETARY" TO BEL FUSE INC. AND SHALL NOT BE COPIED, REPRODUCED OR DISCLOSED WITHOUT THE WRITTEN APPROVAL OF BEL FUSE INC.



1. THE SUGGESTED PANEL OPENING TO GIVE THE USER THE ABILITY REASONABLE JACK / PANEL C YET MAINTAIN RELIABLE GROUND CAPABILITY.
2. ALL TOLERANCES NOT OTHERWISE TO BE  $\pm 0.05$  [0.13]

ORIGINATED BY <b>Zeng Xiaochun</b>	DATE <b>2012-04-18</b>	TITLE <b>MagJack® 10/100BT,PoE TAB UP,SHIELDED PATENTED</b>	PART NO. / DRAWING NO. <b>SI-52008-F</b>		STANDARD DIM. TOL. IN INCH
DRAWN BY <b>Duan Jun</b>	DATE <b>2012-04-18</b>		FILE NAME <b>SI-52008-F.DWG</b>	.X	
				.XX	
				.XXX	$\pm 0.00$

## X-ON Electronics

Largest Supplier of Electrical and Electronic Components

*Click to view similar products for [Modular Connectors / Ethernet Connectors](#) category:*

*Click to view products by [Bel Fuse](#) manufacturer:*

Other Similar products are found below :

[8949-H88/06BLKA/SN](#) [74441-0010/BKN](#) [MP1010RX-1000](#) [MP44RX-1000](#) [PHJ-4P4C-1-V-4](#) [PHP-6P6C-5](#) [GAX-3-66](#) [GAX-8-62](#) [GDCX-PA-66-50](#) [GDCX-PN-64](#) [GDCX-PN-66](#) [GDCX-PN-66-50](#) [GDLX-A-66](#) [GDLX-N-66](#) [GDLX-S-66](#) [GDLX-S-88K](#) [GDLX-SMT-S-88](#) [GDTX-S-88-50](#) [GDX-PA-1010](#) [GLX-N-1010M-BLK](#) [GLX-S-88M-BLK](#) [GMX-N-1010](#) [GMX-S-1010](#) [GMX-S-66](#) [GMX-SMT4-N-88](#) [GPX-2-64](#) [GSGX-N-2-88](#) [GSGX-N-4-88](#) [GSX-NS2-88-3.05](#) [GSX-NS2-88-3.05-50](#) [GSX-NS-88-3.05-50](#) [PT-108A-8C-UL](#) [PT-J951-8C](#) [PTS-J531-8CS-50UL](#) [1-1775629-2](#) [A-2014-0-4](#) [GWLX-S-88-GR](#) [GWLX-S9-88-YG](#) [DC-1021-8-WH-6](#) [1300530003](#) [1324640-4](#) [RJ11FTVC2G](#) [RJ11FTVC2N](#) [RJFTVX2SA1G](#) [132764-001](#) [1413235](#) [MP88X-1000](#) [MPS88RX-5000](#) [E5288-S000K3-L](#) [E5908-15A242-L](#)