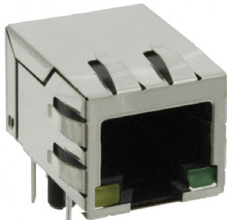


Automotive Grade Connectors

Ethernet Connectivity Inside the Automobile

The automotive industry is moving swiftly to incorporate Ethernet signals and cabling to replace existing CAN bus signaling used today. Ethernet is faster in transmission speed and lighter in cable weight. The RJ45 connector offers a proven, reliable connectivity alternative to meet the transportation industry's increasing requirements. Stewart Connector's automotive grade passive RJ45 connectors are compatible with vibration and sealing requirements necessary to comply with SAE/USCAR2-6 standards.



Features & Benefits

- LED and non-LED versions available
- 50u" of gold on the contacts
- Fully shielded connectors
- Capable of supporting high temperature applications with an operating temperature of 100°C
- RoHS compliant

Applications

- Radar based driver assistance systems
- Driver-assist cameras
- Media converters and gateways

Part Numbers

Part Number	Orientation	Performance	Temperature Range	LED's
SS-60400-001	Vertical	1G, 2.5G, 5G, 10G	-40C° to 100°C	Yes
SS-60300-011	Horizontal	1G, 2.5G, 5G, 10G	-40C° to 100°C	No
SS74800-132F	Horizontal	1G, 2.5G	-40C° to 100°C	Yes
SS71800-121F	Horizontal	1G, 2.5G	-40C° to 100°C	No



Stewart Connector
11118 Susquehanna Trail South
Glen Rock, PA 17327-9199

+1 717.235.7512
techhelp@belf.com
belfuse.com/stewart-connector

X-ON Electronics

Largest Supplier of Electrical and Electronic Components

Click to view similar products for [Modular Connectors / Ethernet Connectors](#) category:

Click to view products by [Bel Fuse](#) manufacturer:

Other Similar products are found below :

[8949-H88/06BLKA/SN](#) [74441-0010/BKN](#) [MP1010RX-1000](#) [MP44RX-1000](#) [PHJ-4P4C-1-V-4](#) [PHP-6P6C-5](#) [GAX-3-66](#) [GAX-8-62](#) [GDCX-PA-66-50](#) [GDCX-PN-64](#) [GDCX-PN-66](#) [GDCX-PN-66-50](#) [GDLX-A-66](#) [GDLX-N-66](#) [GDLX-S-66](#) [GDLX-S-88K](#) [GDLX-SMT-S-88](#) [GDTX-S-88-50](#) [GDX-PA-1010](#) [GLX-N-1010M-BLK](#) [GLX-S-88M-BLK](#) [GMX-N-1010](#) [GMX-S-1010](#) [GMX-S-66](#) [GMX-SMT4-N-88](#) [GPX-2-64](#) [GSGX-N-2-88](#) [GSGX-N-4-88](#) [GSX-NS2-88-3.05](#) [GSX-NS2-88-3.05-50](#) [GSX-NS-88-3.05-50](#) [PT-108A-8C-UL](#) [PT-J951-8C](#) [PTS-J531-8CS-50UL](#) [1-1775629-2](#) [A-2014-0-4](#) [GWLX-S-88-GR](#) [GWLX-S9-88-YG](#) [DC-1021-8-WH-6](#) [1300530003](#) [1324640-4](#) [RJ11FTVC2G](#) [RJ11FTVC2N](#) [RJFTVX2SA1G](#) [132764-001](#) [1413235](#) [MP88X-1000](#) [MPS88RX-5000](#) [E5288-S000K3-L](#) [E5908-15A242-L](#)