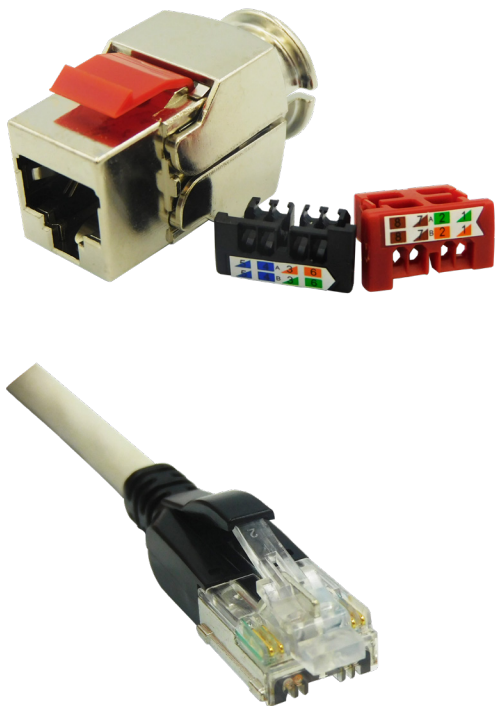


# Category 8.2 Series

## Cable Jacks and Cable Assemblies

Stewart Connector's Category 8.2 series introduces cable jacks and cable assemblies that can run speeds of 25GBASE-T and 40GBASE-T over copper twisted pair. The Cat 8.2 series consists of cable mounted, field terminated cable jacks and cable assemblies (patch cords). They are designed to meet Category 8.2 performance standards up to 2 GHz as defined by ISO/IEC 11801-1 Class II.

The Category 8.2 series adds to Stewart Connector's ARJ45® connector family. Stewart's ARJ45® connectors are built on the proven reliability of the standard RJ45 interface mechanics which have been enhanced to support increased data speeds. The Cat 8.2 series is a cost-effective solution for data centers looking to upgrade their data transmission speeds without switching over to a fiber optic solution.



### Features & Benefits

- Capable of running speeds of 25GBASE-T and 40GBASE-T over copper twisted pair
- Designed to meet Category 8.2 performance standards up to 2 GHz as defined by ISO/IEC 11801-1 Class II
- ARJ45 interface offers superior pair to pair isolation compared to the RJ45
- Our ARJ45 cable jack offers tool-less termination and is designed to interface with industry standard panels and outlets
- Supports 100W POE applications

### Applications

- Medical
- Ethernet Networking
- Military Communications
- Industrial Equipment Interface
- High Speed/High Noise Networking Protocols

# Category 8.2 Series Cable Jacks and Cable Assemblies

## Part Numbers

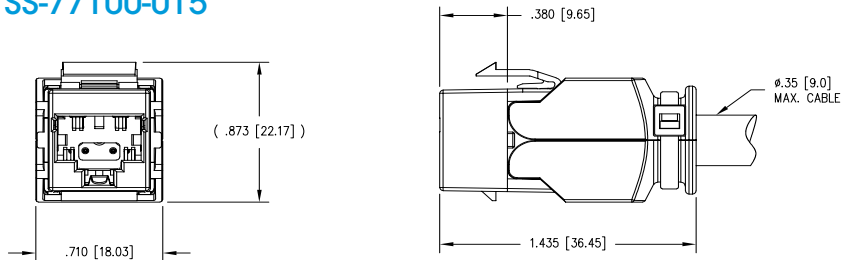
### Cable Jacks

Part Number	Performance	Interface	Product Type
SS-77100-015	Cat 8.2	ARJ45	Field Terminatable Cable Jack

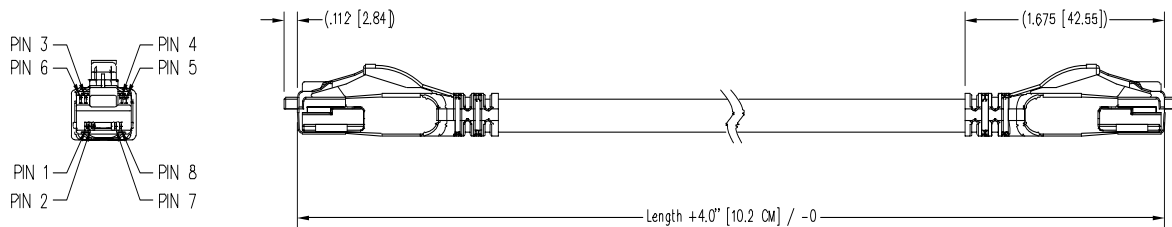
### Cable Assemblies

Part Number	Performance	Conn End A	Conn End B	Length ft	mm
CA82-020M-01	Cat 8.2	Cat 8.2 ARJ45	Cat 8.2 ARJ45	6.56ft	2m
CA82-010M-01	Cat 8.2	Cat 8.2 ARJ45	Cat 8.2 ARJ45	3.28ft	1m

### SS-77100-015



### CA82-010M-01



Stewart Connector  
11118 Susquehanna Trail South  
Glen Rock, PA 17327-9199

+1 717.235.7512  
techhelp@belf.com  
[belfuse.com/stewart-connector](http://belfuse.com/stewart-connector)

## X-ON Electronics

Largest Supplier of Electrical and Electronic Components

*Click to view similar products for [Modular Connectors / Ethernet Connectors](#) category:*

*Click to view products by [Bel Fuse](#) manufacturer:*

Other Similar products are found below :

[8949-H88/06BLKA/SN](#) [74441-0010/BKN](#) [MP1010RX-1000](#) [MP44RX-1000](#) [PHJ-4P4C-1-V-4](#) [PHP-6P6C-5](#) [GAX-3-66](#) [GAX-8-62](#) [GDCX-PA-66-50](#) [GDCX-PN-64](#) [GDCX-PN-66](#) [GDCX-PN-66-50](#) [GDLX-A-66](#) [GDLX-N-66](#) [GDLX-S-66](#) [GDLX-S-88K](#) [GDLX-SMT-S-88](#) [GDTX-S-88-50](#) [GDX-PA-1010](#) [GLX-N-1010M-BLK](#) [GLX-S-88M-BLK](#) [GMX-N-1010](#) [GMX-S-1010](#) [GMX-S-66](#) [GMX-SMT4-N-88](#) [GPX-2-64](#) [GSGX-N-2-88](#) [GSGX-N-4-88](#) [GSX-NS2-88-3.05](#) [GSX-NS2-88-3.05-50](#) [GSX-NS-88-3.05-50](#) [PT-108A-8C-UL](#) [PT-J951-8C](#) [PTS-J531-8CS-50UL](#) [1-1775629-2](#) [A-2014-0-4](#) [GWLX-S-88-GR](#) [GWLX-S9-88-YG](#) [DC-1021-8-WH-6](#) [1300530003](#) [1324640-4](#) [RJ11FTVC2G](#) [RJ11FTVC2N](#) [RJFTVX2SA1G](#) [132764-001](#) [1413235](#) [MP88X-1000](#) [MPS88RX-5000](#) [E5288-S000K3-L](#) [E5908-15A242-L](#)