

# Essential Modular Jacks

Stewart Connector's Essential Line of modular jacks are ideal solutions for common modular jack applications. Stewart Connector's Essential modular jacks support the transmission of Gigabit Ethernet signals targeted to hubs, switches and routers. This line of modular jacks includes both right angle and vertical thru-hole mount options for 4, 6, and 8 position unshielded modular jacks.

## Features & Benefits

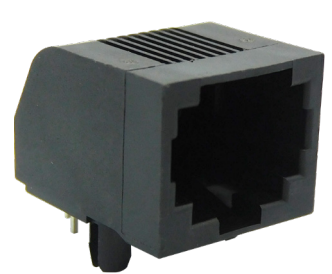
- 15 micro-inches of gold plating in contact mating area
- Voltage rating 125 VAC RMS
- Current rating 1.5 AMP
- Storage and operational temperature -40° - 80°

## Applications

- Routers
- Servers
- Consumer products
- Telecom applications
- Standard office equipment

## Part Numbers

Part Number	Orientation	Flange	Ports	Shield	Positions	Contacts
SS-90000-001	Horizontal	None	1	Unshielded	8	8
SS-90000-002	Horizontal	Flange	1	Unshielded	8	8
SS-90000-003	Horizontal	None	1	Unshielded	6	6
SS-90000-004	Horizontal	Flange	1	Unshielded	6	6
SS-90000-005	Vertical	None	1	Unshielded	6	4
SS-90000-006	Horizontal	Flange	1	Unshielded	6	4
SS-90000-007	Vertical	Flange	1	Unshielded	6	6



Stewart Connector  
11118 Susquehanna Trail South  
Glen Rock, PA 17327-9199

+1 717.235.7512  
techhelp@belf.com  
[belfuse.com/stewart-connector](http://belfuse.com/stewart-connector)

## X-ON Electronics

Largest Supplier of Electrical and Electronic Components

*Click to view similar products for [Modular Connectors / Ethernet Connectors](#) category:*

*Click to view products by [Bel Fuse](#) manufacturer:*

Other Similar products are found below :

[8949-H88/06BLKA/SN](#) [74441-0010/BKN](#) [MP1010RX-1000](#) [MP44RX-1000](#) [PHJ-4P4C-1-V-4](#) [PHP-6P6C-5](#) [GAX-3-66](#) [GAX-8-62](#) [GDCX-PA-66-50](#) [GDCX-PN-64](#) [GDCX-PN-66](#) [GDCX-PN-66-50](#) [GDLX-A-66](#) [GDLX-N-66](#) [GDLX-S-66](#) [GDLX-S-88K](#) [GDLX-SMT-S-88](#) [GDTX-S-88-50](#) [GDX-PA-1010](#) [GLX-N-1010M-BLK](#) [GLX-S-88M-BLK](#) [GMX-N-1010](#) [GMX-S-1010](#) [GMX-S-66](#) [GMX-SMT4-N-88](#) [GPX-2-64](#) [GSGX-N-2-88](#) [GSGX-N-4-88](#) [GSX-NS2-88-3.05](#) [GSX-NS2-88-3.05-50](#) [GSX-NS-88-3.05-50](#) [PT-108A-8C-UL](#) [PT-J951-8C](#) [PTS-J531-8CS-50UL](#) [1-1775629-2](#) [A-2014-0-4](#) [GWLX-S-88-GR](#) [GWLX-S9-88-YG](#) [DC-1021-8-WH-6](#) [1300530003](#) [1324640-4](#) [RJ11FTVC2G](#) [RJ11FTVC2N](#) [RJFTVX2SA1G](#) [132764-001](#) [1413235](#) [MP88X-1000](#) [MPS88RX-5000](#) [E5288-S000K3-L](#) [E5908-15A242-L](#)