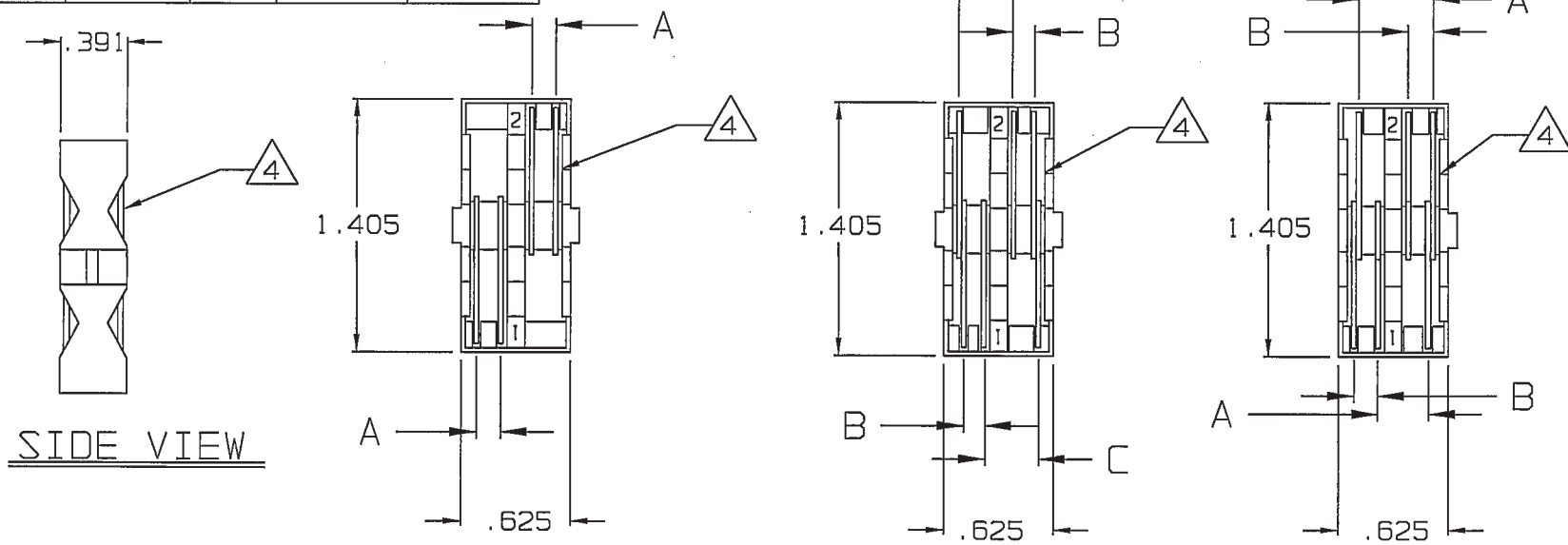


| DASH NO | MODEL NO | COLOR  | A DIM | B DIM  | C DIM  |
|---------|----------|--------|-------|--------|--------|
| -1      | STC-W    | GRAY   | .156  | —      | —      |
| -2      | STC-F    | LT GRN | —     | .108/3 | .330/3 |
| -3      | STC-FR   | CLEAR  | .439  | .203   | —      |
| -4      | STC-WM   | BLUE   | .125  | —      | —      |
| -5      | STC-DF   | BLACK  | —     | .161   | .236   |
| -6      | STC-DF2  | DK GRN | .125  | —      | —      |

DATA CONTAINED IN THIS DOCUMENT IS PROPRIETARY TO TROMPETER ELECTRONICS INC. AND SHALL NOT BE DISCLOSED, COPIED OR USED FOR PROCUREMENT OR MANUFACTURE WITHOUT EXPRESS WRITTEN PERMISSION OF TROMPETER ELECTRONICS INC.

| REVISIONS |                       | 010-0029 | SH 1     |
|-----------|-----------------------|----------|----------|
| REV       | DESCRIPTION           | DATE     | APPROVED |
| H         | REVISED PER ECD 15861 | 5-19-05  | BS       |

**RED INDICATES ORIGINAL**



4 SHARP EDGE OF BLADES  
FACE NUMBERED SIDE  
OF UNITS: -1, -2, & -4

-1/-4/-6  
2-BLADE


-2/-5  
3-BLADE

-3  
3 - BLADE

3 MAY BE USED FOR TEI STANDARD  
3-STEP STRIP DIMENSION REQUIREMENT

2. STRIPPING TOOL CASSETTE BOTH "W"  
(WRENCH CRIMP), "F" (FULL CRIMP) "FR"  
(FULL CRIMP RIGHT ANGLE UPLRN220), AND  
"WM" (WRENCH CRIMP MINIATURE, PL50)  
VERSIONS FOR USE WITH ST1 TOOL

1. ALL DIM ARE IN INCHES

|  |                 |   |  |   |                    |                         |           |
|--|-----------------|---|--|---|--------------------|-------------------------|-----------|
| INTERPRET DRAWING PER<br>MIL-STD-100<br>DIMENSIONS ARE IN INCHES<br>AND INCLUDE FINISH THICKNESS<br>UNLESS OTHERWISE SPECIFIED |                 | TOL: UNLESS SPECIFIED<br>.XX<br>.XXX ±.003<br>.XXXX ±.0010<br>ANGLES ±0°30' |  | <br>a cinch connectivity solutions brand |                    |                         |           |
| DRAWN<br>AAH   | DATE<br>5-11-05 | MATERIAL:   |  |   |                    | TITLE:<br>STC           |           |
| CHECKED<br>S. Khan   | DATE<br>5-11-05 | FINISH:   |  | SIZE<br>A   | CAGE CODE<br>14949 | DRAWING NO.<br>010-0029 | REV.<br>H |
| QUALITY<br>MS  | DATE<br>5/12/05 | DO NOT SCALE DWG  |  | SCALE<br>1/1  | DATE:<br>5-18-79   | SHEET<br>1C             |           |
| MANUF<br>JK  | DATE<br>5/12/05 | NEXT ASSY   |  | CAD FILE NO.<br>010-0029H   |                    |                         |           |
| APPROVED<br>BS   | DATE<br>5-11-05 |   |  |   |                    |                         |           |

## X-ON Electronics

Largest Supplier of Electrical and Electronic Components

*Click to view similar products for [Wire Stripping & Cutting Tools](#) category:*

*Click to view products by [Bel Fuse](#) manufacturer:*

Other Similar products are found below :

[6-690504-4](#) [693855-1](#) [813066-2](#) [844764-5](#) [844765-5](#) [1-240642-7](#) [133900-001](#) [1-356885-4](#) [1424635-1](#) [1424649-1](#) [1424650-1](#) [1440-0013-84](#)  
[1-458031-5](#) [1-458030-5](#) [MT10-250Q](#) [1755](#) [2-539783-7](#) [L-5211](#) [1633578-3](#) [F10-10Q](#) [1-844765-9](#) [251465-1](#) [R282066100](#) [313808-1](#)  
[CST596711](#) [458031-9](#) [462839-1](#) [467281-1](#) [4-690504-2](#) [406339-3](#) [L-4994](#) [45-265](#) [453653-1](#) [45-418](#) [455177-1](#) [455671-4](#) [458144-8](#) [462007-](#)  
[1](#) [462548-1](#) [464661-1](#) [224186-1](#) [679746-1](#) [809687-1](#) [852080-2](#) [856695-8](#) [11-40-4082](#) [458030-1](#) [679326-7](#) [605744-1](#) [690784-2](#)